

The mutation of *piezo1* weakens the intermuscular bones in zebrafish and crucian carp

Xinyu Zhang ^{1,2,†}, Jinyuan Che ^{1,2,†}, Zhuang Li ^{1,2}, Baolong Bao ^{1,2,3,*} and Chunxin Fan ^{1,2,3,*}

¹ Key Laboratory of Exploration and Utilization of Aquatic Genetic Resources, Ministry of Education, Shanghai Ocean University, Shanghai 201306, China

² International Research Center for Marine Biosciences, Ministry of Science and Technology, Shanghai Ocean University, Shanghai 201306, China

³ National Demonstration Center for Experimental Fisheries Science Education, Shanghai Ocean University, Shanghai, 201306, China.

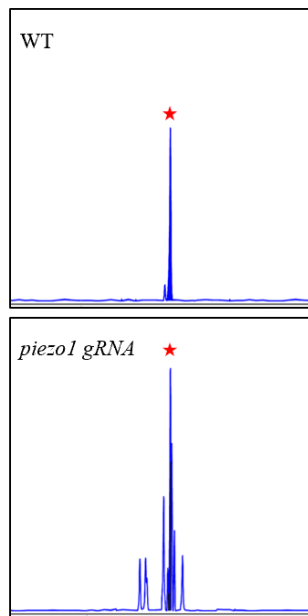
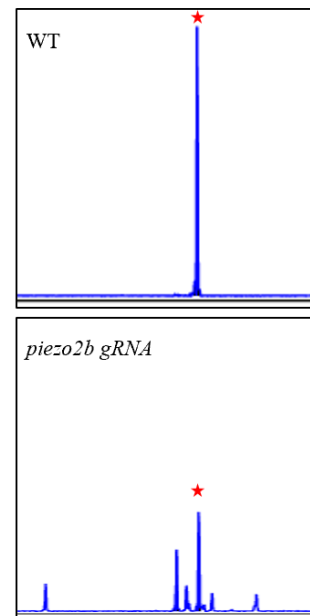
* Corresponding author: cxfan@shou.edu.cn (C.F.); blbao@shou.edu.cn (B.B.) .

† These authors contributed equally to this work.

Supplementary Table S1

Primers used in this study for sgRNA template assembly, probe template assembly, genotyping and qPCR.

Name	Sequence (5' - 3')	Application
Universal	AAAAGCACCGACTCGGTGCCACTTTTTCAAGTTGATAACGGACT	sgRNA Template
Bottom	AGCCTTATTTTAACTTGCTATTTCTAGCTCTAAAAC	Assembly
M13-FAM	CAGGGTTTTCCCAGTCACG	Genotyping
Zebrafish		
Scxa	F: GAGATCCGTCAACGCAATGC	Probe Template
	R: GGACACACTGGTGATGCTGA	Assembly
piezo1	F: AGTTGGCAGACATGGGACTG	Probe Template
	R: CTGGGTATCACCTCGTCAGC	Assembly
piezo1	TAATACGACTCACTATAGCTGCTTGCAGTACGTGTGTTTTAGAGC	sgRNA Template
	TAGAA	Assembly
piezo2b	TAATACGACTCACTATACGTTCTCGATGGGCACGGGTTTTAGAGC	sgRNA Template
	TAGAA	Assembly
piezo1	F: TGTAAAACGACGGCCAGTGGATGCTGAGGACACGTCAA	Genotyping
	R: GTGTCTTCTCACCAGGGCACCCAAG	
piezo2b	F: TGTAAAACGACGGCCAGTTGCCATAATTCCCGTTTGTG	Genotyping
	R: GTGTCTTAGGCATTGAGACTTCGCGG	
eef1a11l	F: ACCTACCCTCCTCTTGGTCG	Reference for qPCR
	R: GGAACGGTGTGATTGAGGGAA	
piezo1	F: GAGAGGATGCGGCTTCTCAA	qPCR
	R: CCACATGGTGAATCCGTCCA	
piezo2b	F: ACCAGCCAGTTTGAGGATGG	qPCR
	R: ACCACTGACTTTAGCATAGCTGTA	
Crucian Carp		
piezo1a-T1	TAATACGACTCACTATAGGCATTATCAAGGCTGGGGAGTTTTAG	sgRNA Template
	AGCTAGAA	Assembly
piezo1a-T2	TAATACGACTCACTATAGGTGTGCCGTGGCACGCAGGGTTTTAG	sgRNA Template
	AGCTAGAA	Assembly
piezo1a-T3	TAATACGACTCACTATAGGGTGAGGCTGGAGAGGAAGGTTTTAG	sgRNA Template
	AGCTAGAA	Assembly
piezo1a-T1	F: TGTAAAACGACGGCCAGTCTCCATTCCACAGGACACAC	Genotyping
	R: GTGTCTTGCCGTGGACCACTACTAACC	
piezo1a-T2	F: TGTAAAACGACGGCCAGTTGTAGAAGGAGAAGATGAGGGAA	Genotyping
	R: GTGTCTTGTCCTCAACTATTATGCTAAGCCTG	
piezo1a-T3	F: TGTAAAACGACGGCCAGTACAGCTCTGTCTCCTTGAAC	Genotyping
	R: GTGTCTTCAAATTGGGGGCTTTGTCCA	

A**B**

Supplementary Figure S1. Analysis of *piezo1* (A) and *piezo2b* (B) targeting efficiency by fluorescent PCR-coupled capillary electrophoresis. The x-axes (size) and y-axes (signal intensity) of the peak diagrams for WT and mutant fish are aligned. Red stars indicate the position of the WT peak.