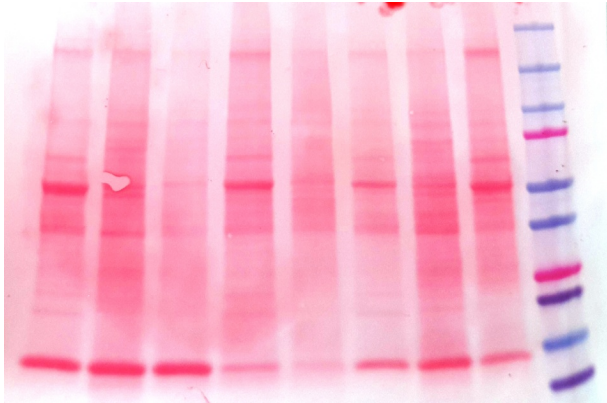
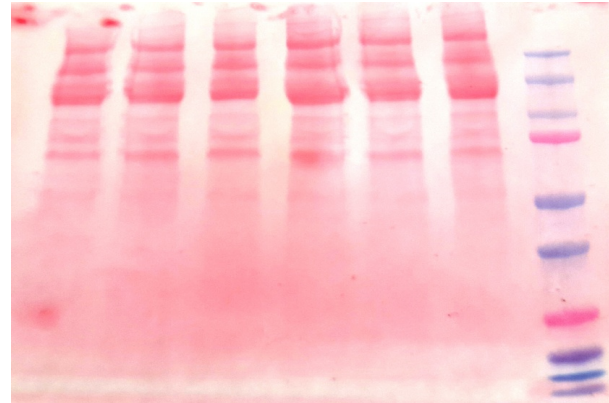


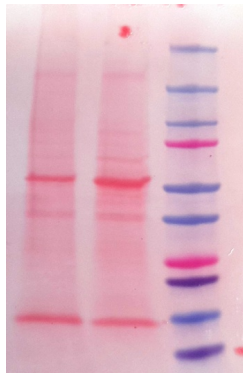
Whole membrane stained with red ponceau



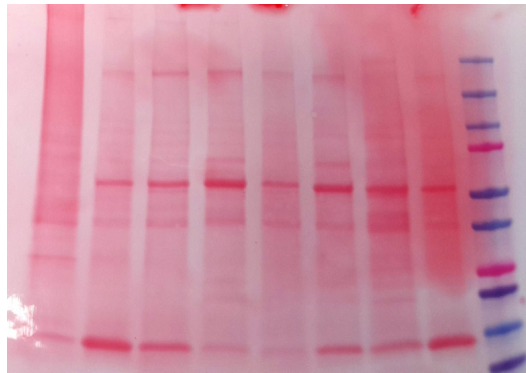
Tissue lysate membrane 1



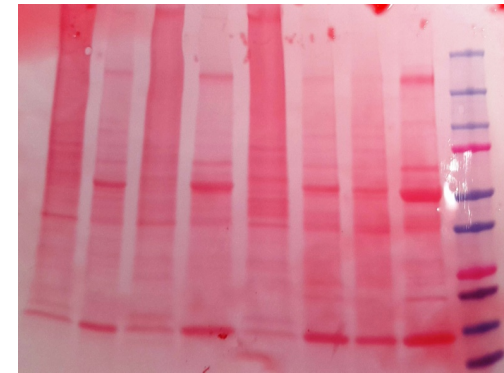
Cell lysate membrane



Tissue lysate membrane 4



Tissue lysate membrane 3



Tissue lysate membrane 2

Lysate cells

AN3CA

ISHIKAWA

3

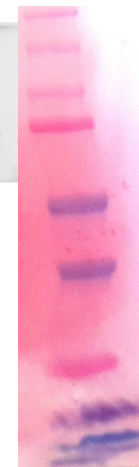
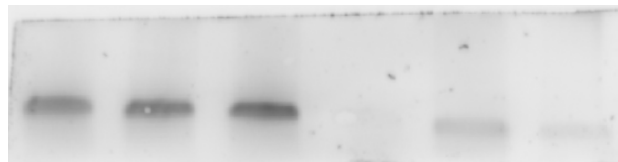
2

1

3

2

1



250 kDa

150 kDa

100 kDa

75 kDa

50 kDa

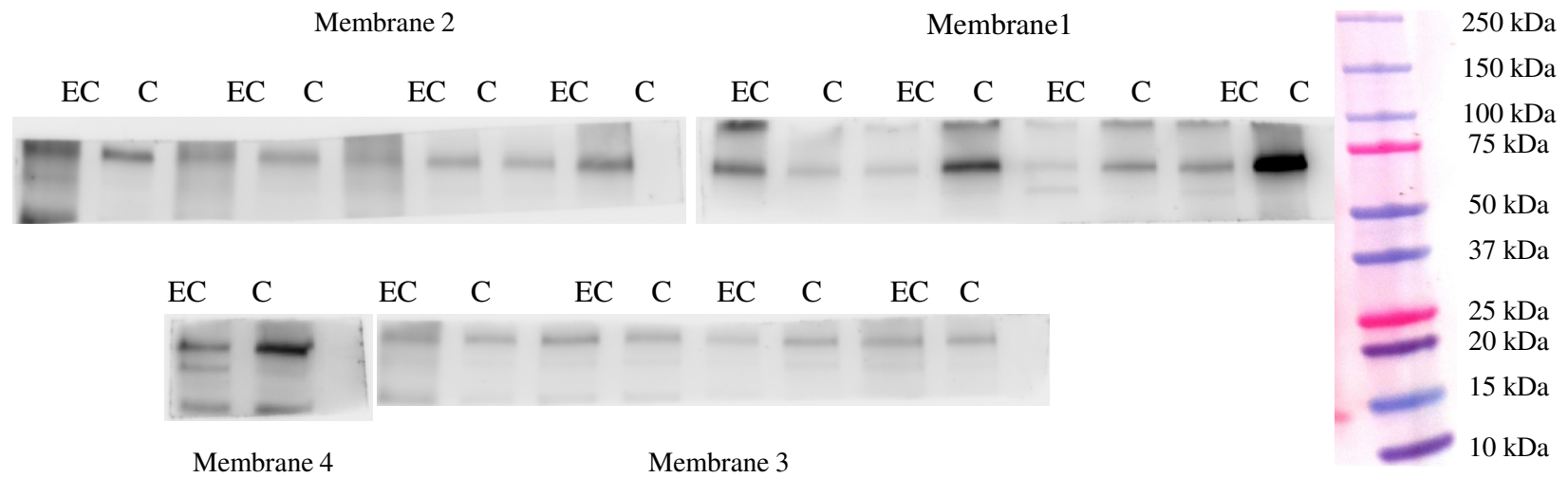
37 kDa

25 kDa

20 kDa

15 kDa

10 kDa



Whole membrane of MMP2 protein

C-control
EC- endometrial cancer

