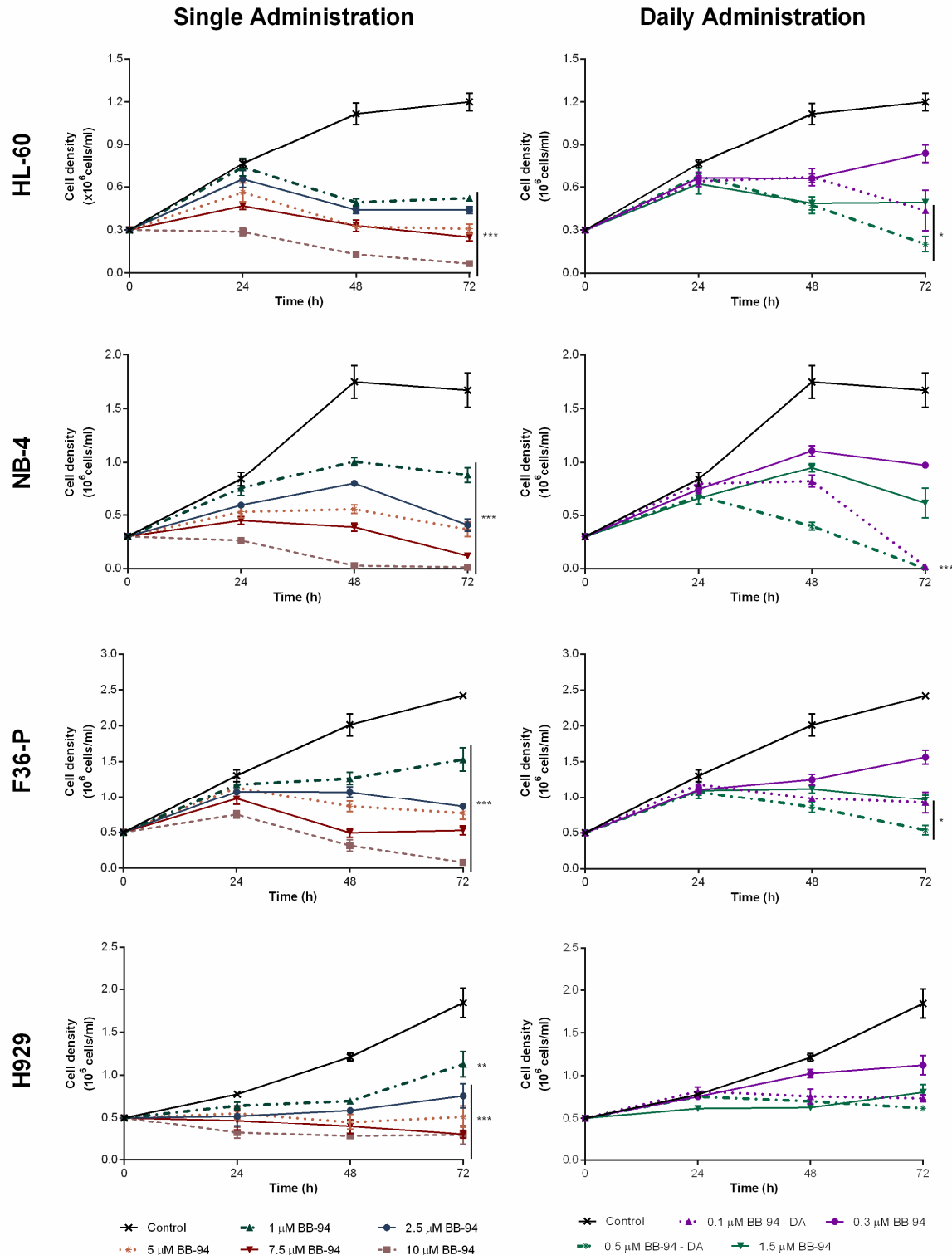


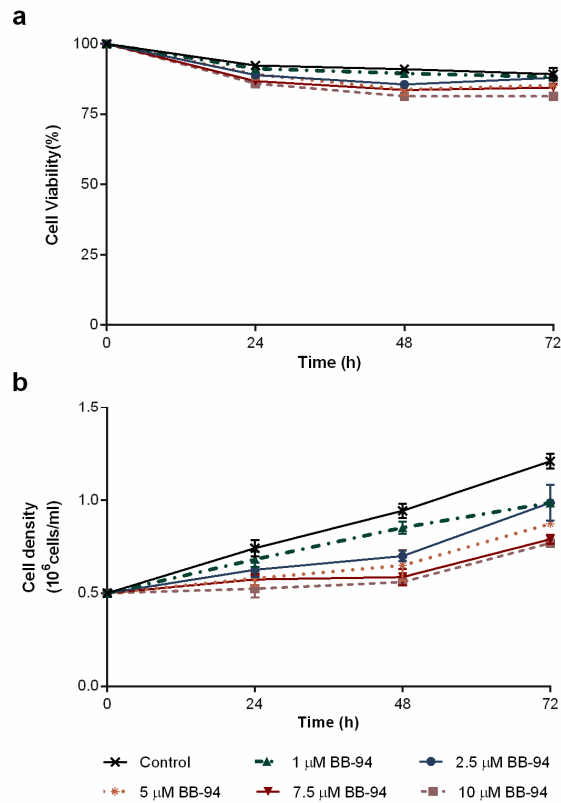
Supplementary Material

Batimastat induces cytotoxic and cytostatic effects in in vitro models of hematological tumors

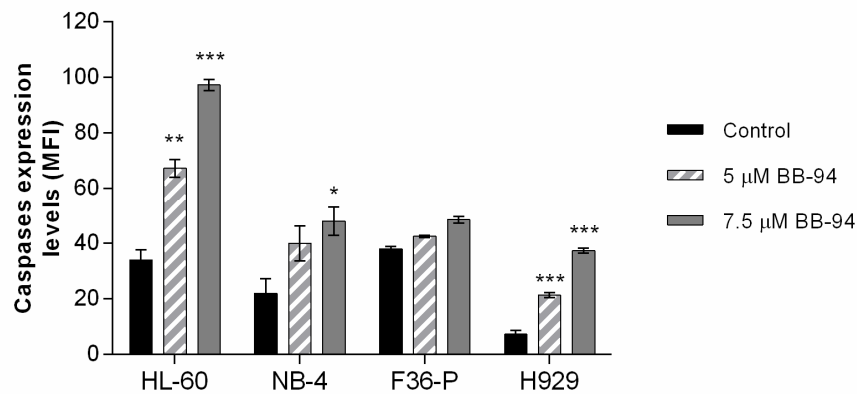
**Raquel Alves ^{1,2,3,†}, Ana Pires ^{1,4,†}, Joana Jorge ^{1,2,3}, Joana Balça-Silva ^{1,5},
Ana Cristina Gonçalves ^{1,2,3,*}, and Ana Bela Sarmiento-Ribeiro ^{1,2,3,6}**



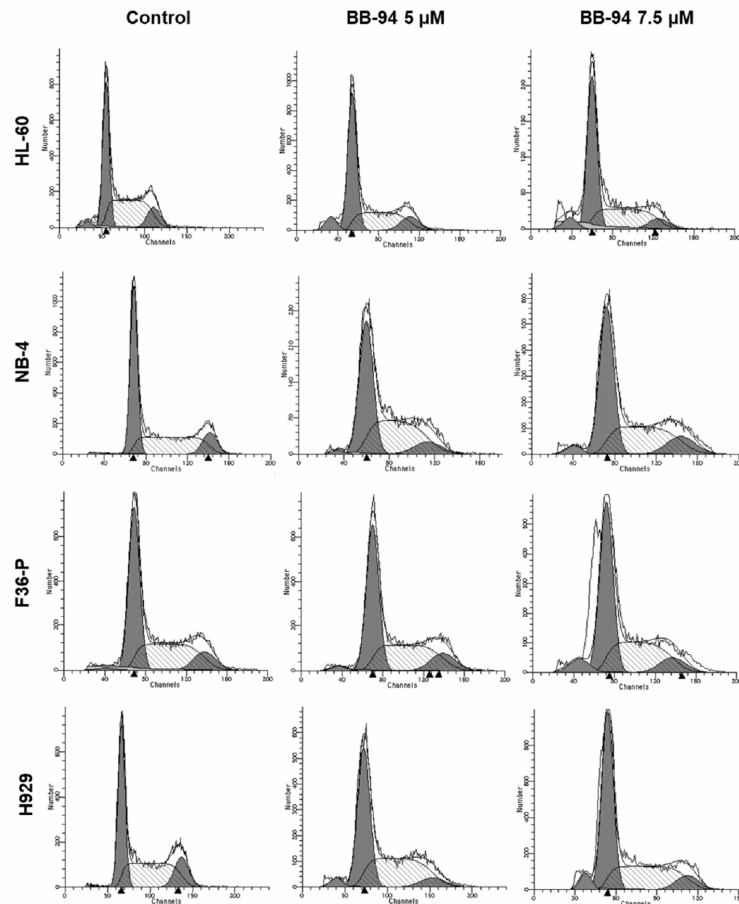
Supplementary Figure S1. Cell density curves of batimastat (BB-94) in a single administration and daily administration schedules for the four hematological cell lines. Cells were incubated in the absence and presence of different concentrations of BB-94 during 72h with different administration schemes. Results were expressed in number of cells (10^6 cell per mL) and represent the mean \pm SEM obtained from 4 independent experiments. * $p < 0.05$; ** $p < 0.01$; *** $p < 0.001$ (comparison with control).



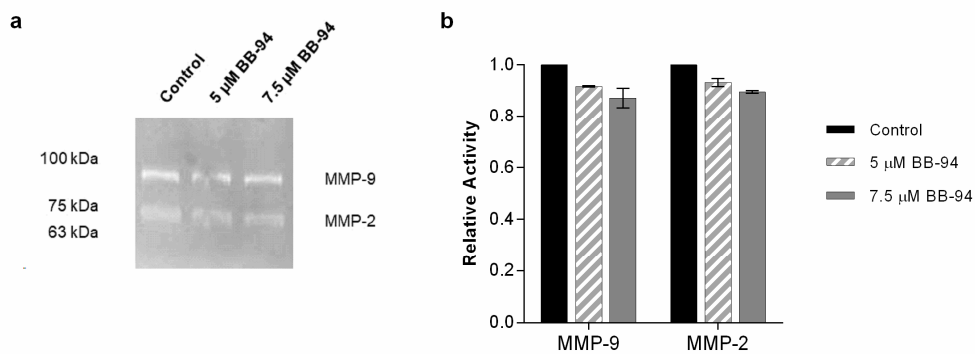
Supplementary Figure S2. Dose-response curves (a) and cell density curves (b) of batimastat (BB-94) in a single administration in IMC cell lines. Cells were incubated in the absence and presence of different concentrations of BB-94 during 72h. Results were expressed in percentage (%) and in number of cells (10^6 cell per mL), and represent the mean \pm SEM obtained from 4 independent experiments.



Supplementary Figure S3. Caspases expression levels induced by Batimastat. The caspases levels assessment was determined by flow cytometry using ApoSTAT probe as markers of apoptosis. Data are expressed d by mean fluorescence intensity (MFI) for ApoSTAT labeling Results were obtained after 48h of incubation and represent mean \pm SEM of at least 3 independent experiments. * p<0.05; ** p<0.01; *** p<0.001 (comparison with control).



Supplementary Figure S4. Representative histograms of cell cycle distribution upon BB-94 treatment



Supplementary Figure S5. Analysis of the effect of BB-94 on gelatinase secretion and activity in NB-4 cells. (a) A representative gel of gelatin zymography of untreated and BB-94-treated cells. The two bands observed correspond to both gelatinases, the MMP-2 with 72 kDa and the MMP-9 with 92 kDa. (b) The MMP-2 and MMP-9 activity were quantified and compared with the control. Data are represented as mean \pm SEM of 3 independent experiments.