

sSEVs				
Sample code	Banff score	Histological report	[]/mL	Diameter (nm)
CQA	Banff 1	normal histology	1,92E+12	127,3 +/- 1,3 nm
CQB	Banff 1	normal histology	9,13E+11	105,9 +/- 1,2 nm
CQC	Banff 1	normal histology	1,45E+12	113,5 +/- 5,2 nm
CQD	Banff 1	normal histology	8,8E+11	145,1 +/- 5,7 nm
CQE	Banff 1	normal histology	4,94E+11	120,2 +/- 2,5 nm
CQF	Banff 1	normal histology	2,97E+12	142,4 +/- 8,7 nm
CQG	Banff 1	normal histology	7,02E+11	114,2 +/- 6,2 nm
CQH	Banff 1	normal histology	3,58E+12	111,7 +/- 0,7 nm
CQI	Banff 1	normal histology	6,16E+11	125,3 +/- 6,9 nm
CQL	Banff 1	normal histology	1,57E+12	132,2 +/- 1,3 nm
CQM	Banff 4	subclinical rejection	1,26E+12	135,0 +/-3,0 nm
CQN	Banff 3	subclinical rejection	2,41E+12	111,6 +/- 2,9 nm
CQO	Banff 3	subclinical rejection	4,1E+12	120,3 +/- 0,5 nm
CQP	Banff 3	subclinical rejection	1,31E+12	106,2 +/- 1,8 nm
CQQ	Banff 3	subclinical rejection	1,58E+12	134,0 +/- 1,3 nm
CQR	Banff 5	subclinical rejection	1,01E+12	118,3 +/- 5,3 nm
CQS	Banff 5	subclinical rejection	2,89E+12	124,3 +/- 2,4 nm
CQT	Banff 4	subclinical rejection	2,71E+12	111,5 +/- 0,8 nm
CQU	Banff 5	subclinical rejection	1,59+012	106,9 +/- 5,0 nm
CQV	Banff 5	subclinical rejection	9,19E+11	123,4 +/- 0,2 nm

Table S1. Serum sEVS (sSEVs). The table summarizes the first cohort's histological information, the particle concentration and the size of the sEVs purified from serum samples of patients with SCR (n=10) and normal histology (n=10) considered in this study.

UEVs				
Sample code	Banff score	Histological report	[]/mL	Diameter (nm)
EDR	Banff 1	normal histology	5,2E+11	188,5 +/- 11,5 nm
EDT	Banff 1	normal histology	6,34E+11	216,2 +/- 6,1 nm
EDU	Banff 1	normal histology	9,56E+11	180,8 +/- 2,6 nm
EDQ	Banff 1	normal histology	6,86E+11	183,2 +/- 1,9 nm
EDV	Banff 1	normal histology	5,64E+11	168,2 +/- 2,4 nm
EEB	Banff 2	subclinical rejection	6,7E+11	190,0 +/- 8,0 nm
EEE	Banff 3	subclinical rejection	9,56E+11	194,4 +/- 8,0 nm
EEC	Banff 4	subclinical rejection	7,56E+11	181,2 +/- 15,1 nm
EED	Banff 4	subclinical rejection	6,14E+11	183,3 +/- 5,4 nm
EEG	Banff 3	subclinical rejection	2,79E+11	187,9 +/- 8,1 nm

Table S2. Urine sEVs (sUEVs). The table summarizes the second cohort's histological information, the particle concentration and the size of the sEVs purified from urine samples of patients with SCR (n=5) and normal histology (n=5) considered in this study.

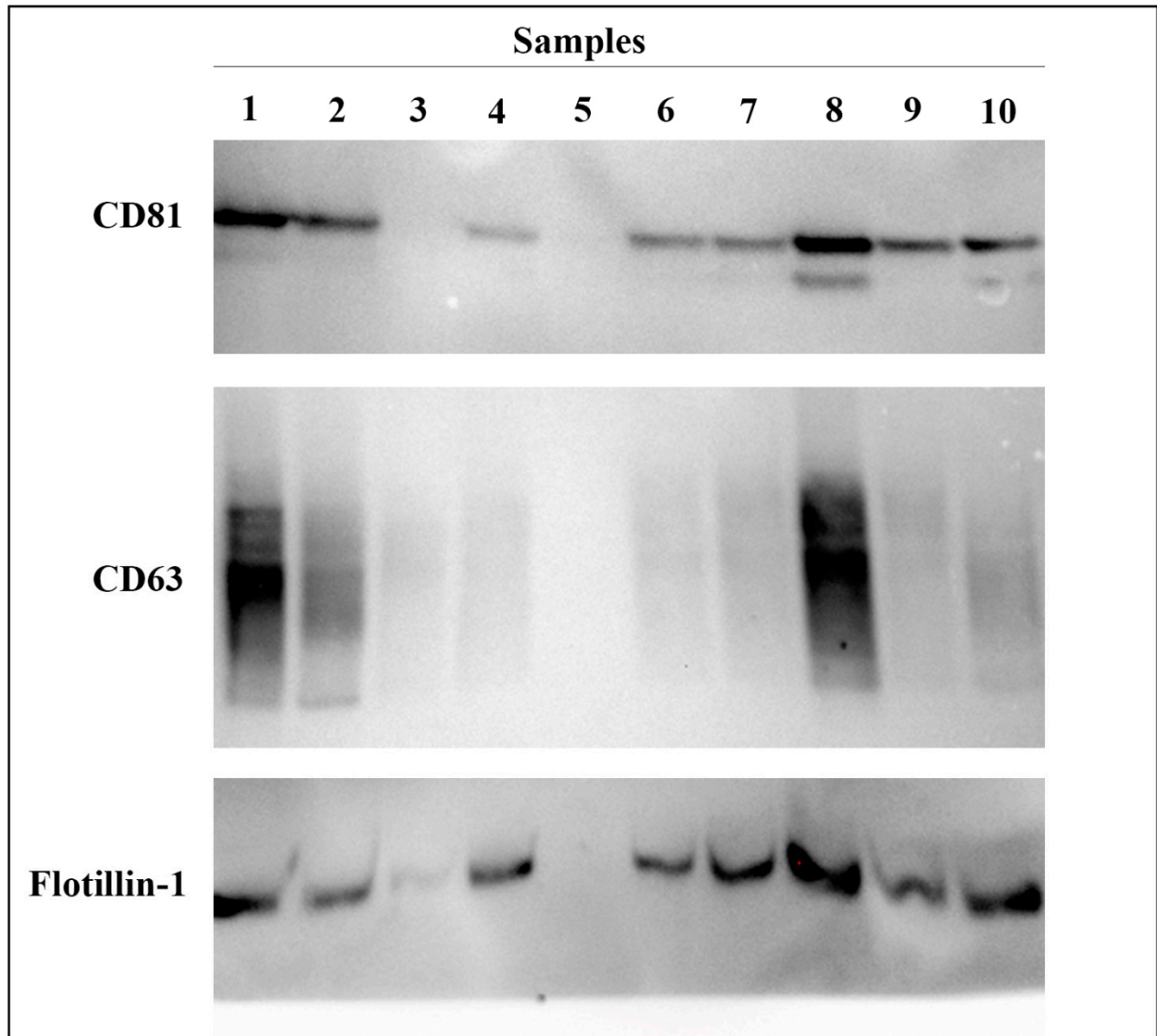


Figure S1. Western blot analysis. Blot of the two tetraspanins CD81 and CD63, and Flotillin-1 present in sUEVs. Samples 1 to 10 are EEB, EEE, EDV, EED, EEG, EDR, EDT, EDU, EDQ, EEC. Samples show a different markers expression. All samples were positive for at least one of the three markers. Flotillin-1 was the most present. The EDV sample shows a low markers expression, whereas the EEG sample seems to not have evidence of these proteins, probably due to its low concentration. This feature was commented on the Section 2.2. Extraction and Characterization of EVS.