



Article

# $\beta$ -Caryophyllene Inhibits Endothelial Tube Formation by Modulating the Secretome of Hypoxic Lung Cancer Cells—Possible Role of VEGF Downregulation

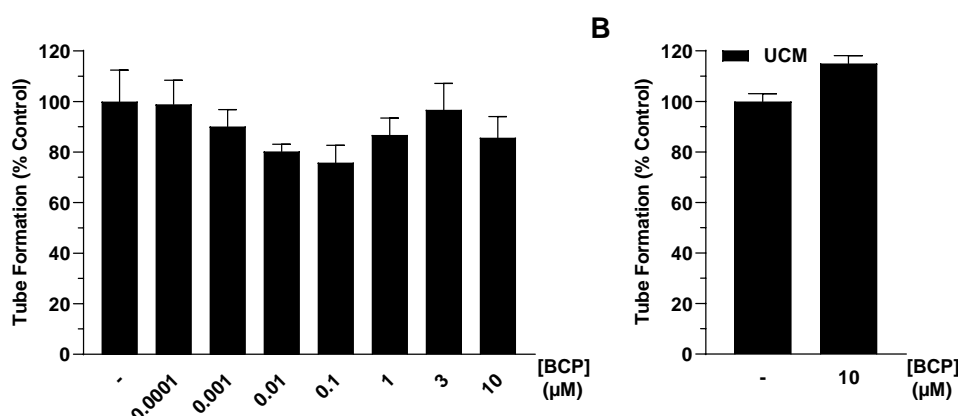
Felix Wittig <sup>1,†</sup>, Florian Koch <sup>1,†</sup>, Liza Pannenberg <sup>1</sup>, Sander Bekeschus <sup>2</sup>, Robert Ramer <sup>1</sup> and Burkhard Hinz <sup>1,\*</sup>

<sup>1</sup> Institute of Pharmacology and Toxicology, Rostock University Medical Center, Schillingallee 70, 18057 Rostock, Germany; felix.wittig@med.uni-rostock.de (F.W.)

<sup>2</sup> ZIK Plasmatis, Leibniz Institute for Plasma Science and Technology (INP), Felix-Hausdorff-Str. 2, 17489 Greifswald, Germany

\* Correspondence: burkhard.hinz@med.uni-rostock.de; Tel.: +49-381-494-5770

† These authors contributed equally to this work.



**Supplementary Figure S1.** Tube formation of HUVECs after direct incubation with BCP or vehicle (A) or with serum-free unconditioned medium (UCM) previously incubated with BCP or vehicle for 48 h under hypoxic, cell-free conditions (B). HUVEC were incubated for 3 h with (A) BCP at the indicated concentrations or vehicle in serum-free medium or with (B) UCM with vehicle or 10  $\mu$ M BCP. Subsequently, the corresponding tubes were counted. Percentage values refer to the respective vehicle-treated control, set to 100%. Data represent mean  $\pm$  SEM of  $n = 3$ . A significant effect of BCP was excluded by one-way ANOVA with Dunnett's post hoc test (A) or Student's unpaired two-tailed  $t$ -test (B).