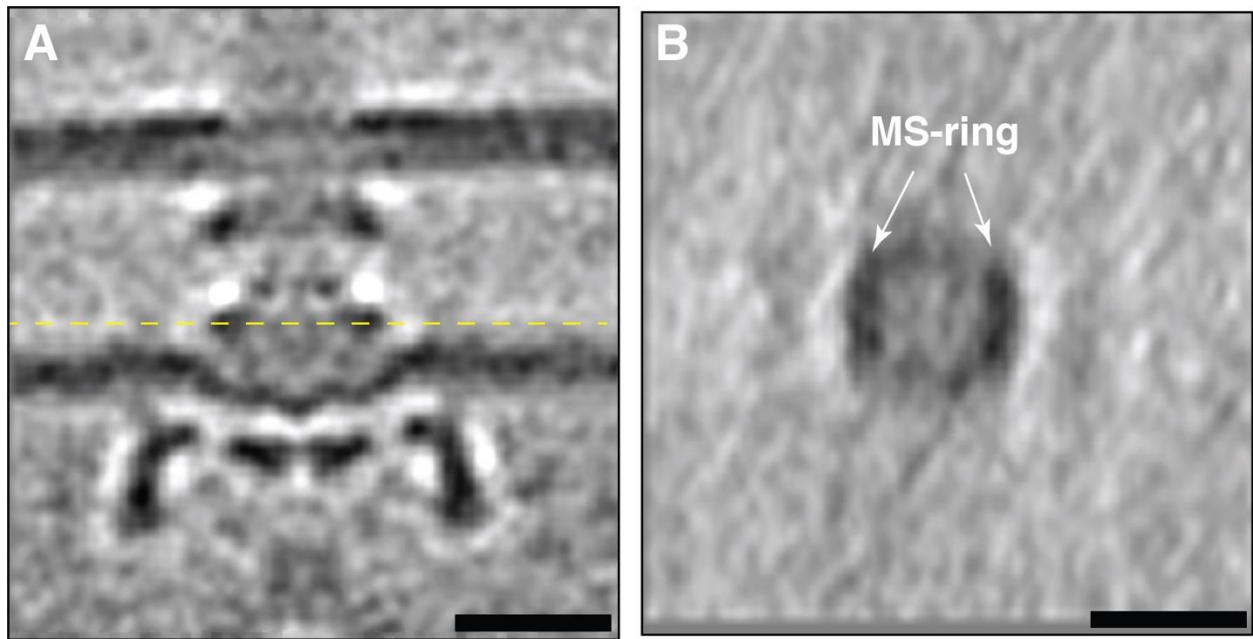


**Figure S1:** A slice through a cryo-electron tomogram of a *P. mirabilis* vegetative cell indicating the presence of multiple fimbriae stemming from the cell (white arrows). Scale bar is 100 nm.



**Figure S2:** A) A slice through the subtomogram average of *P. mirabilis* flagellar motor with a cross section through the motor (indicated by the dotted yellow line) shown on the left in panel (B). Scale bar is 20 nm.