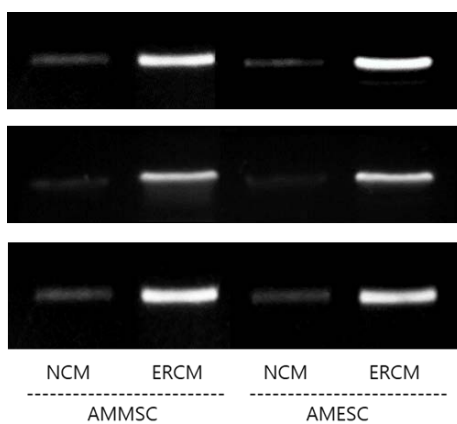
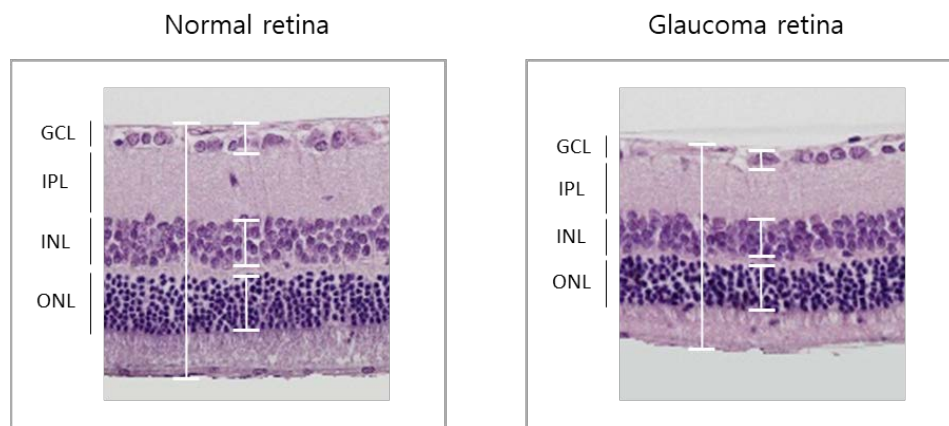




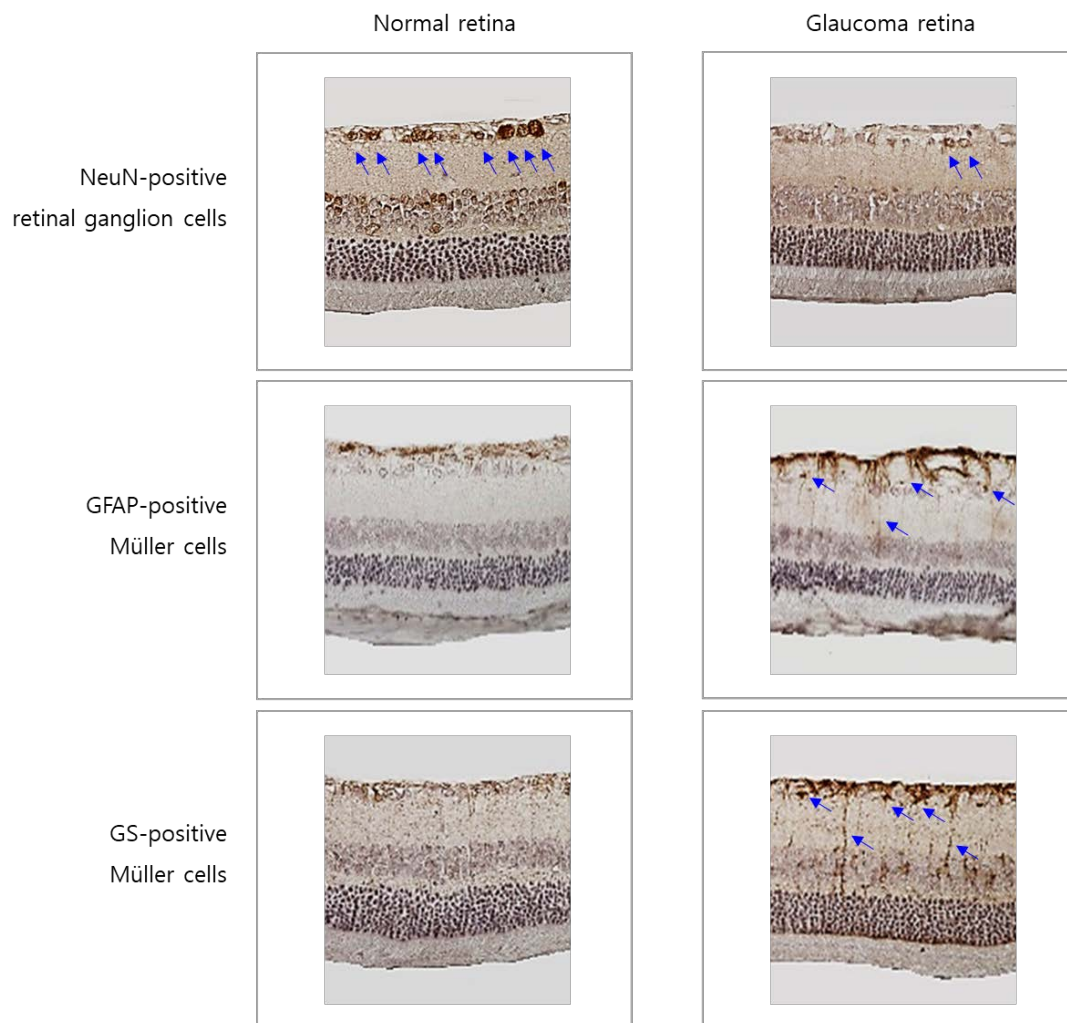
Manuscript ijms-2341118



**Supplementary Figure S1.** Western blot analysis of CD9-positive exosomes.



**Supplementary Figure S2.** Retinal structure of normal and glaucoma rats. GCL: ganglion cell layer, IPL: inner plexiform layer, INL, inner nuclear layer, ONL: outer nuclear layer.



**Supplementary Figure S3.** Immunohistochemical findings of NeuN-positive retinal ganglion cells (A, arrow), glial fibrillary acidic protein (GFAP)-positive Müller cells (B, arrow), and glutamine synthetase (GS)-positive Müller cells (C, arrow) in the retina of normal and glaucoma rats.