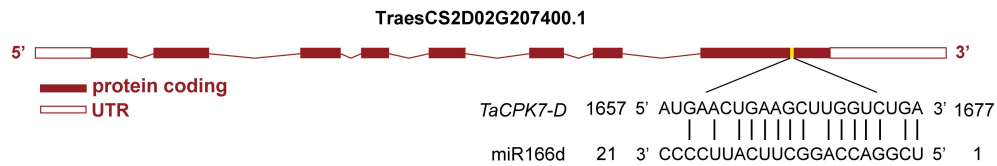
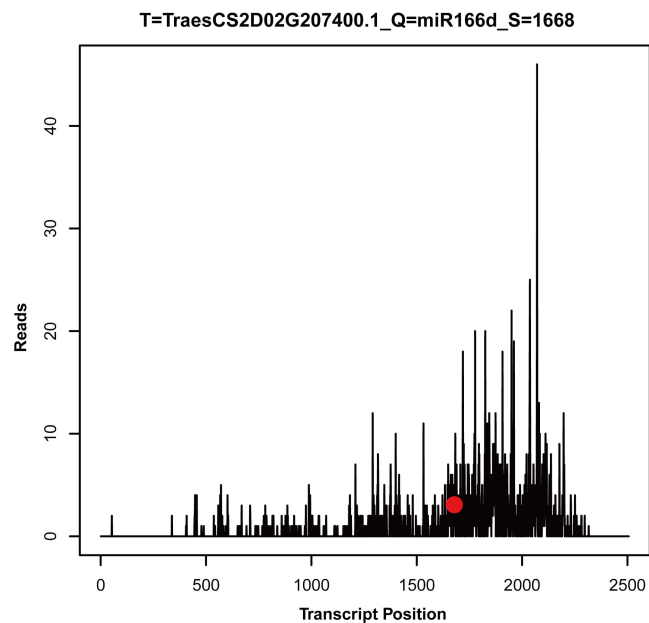


**Figure S1.** The secondary structure (A) and mature sequence (B) of miR166 members responsive to LK ( $10 \mu\text{M K}^+$ ) stress in wheat roots.



**Figure S2.** Interaction characterization between miR166d and *TaCPK7-D*.



**Figure S3.** Degradome sequencing showing the putative cleavage site on *TaCPK7-D* transcript. The red point indicates the cleavage site.