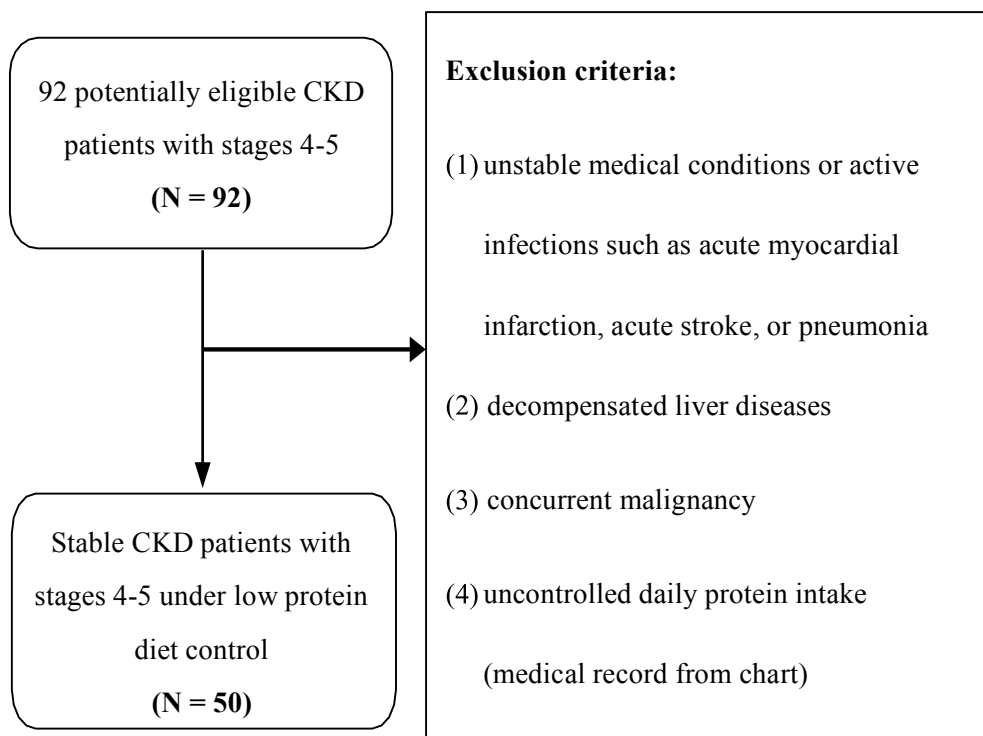


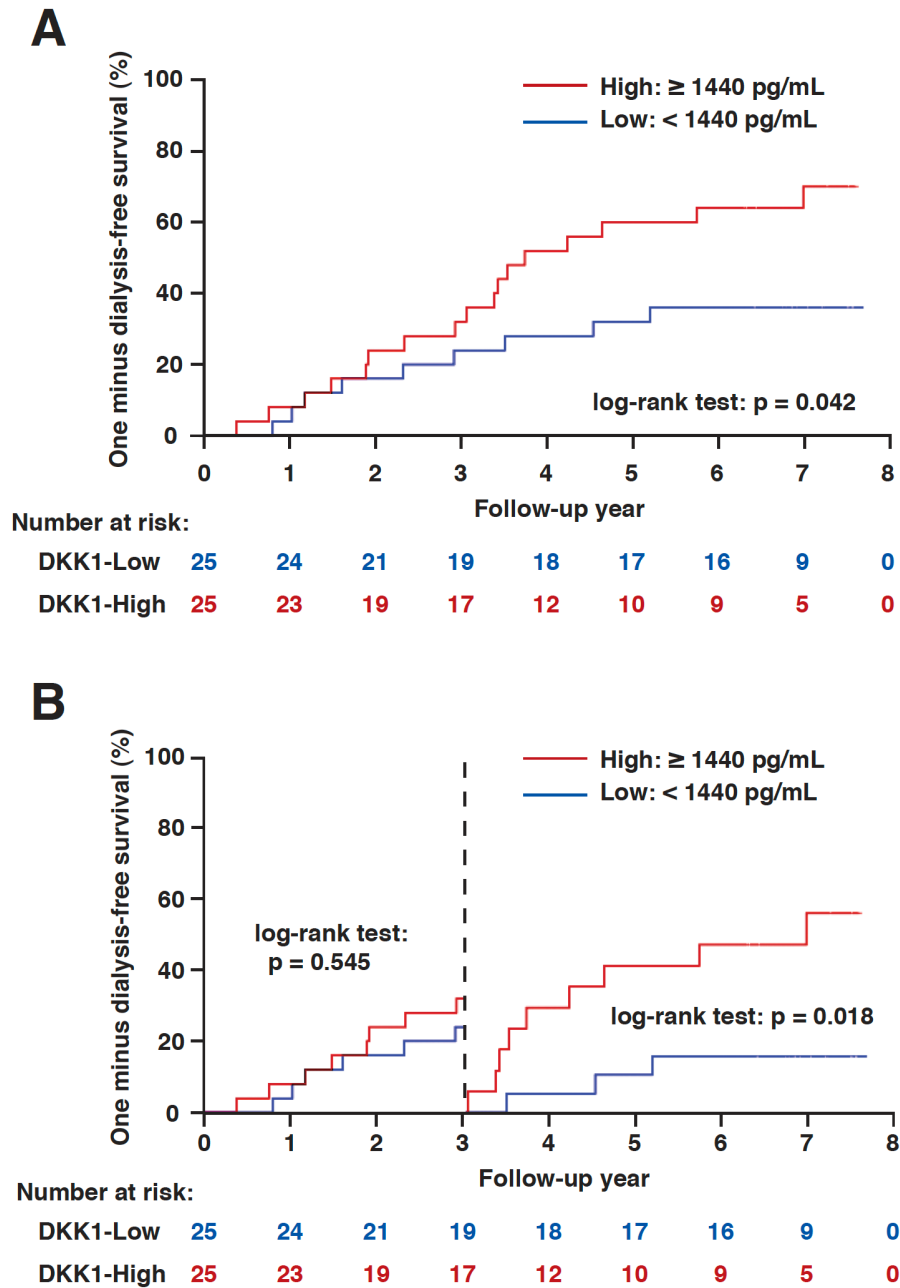
## Supplementary Table and Figures

**Table S1. Serum DKK1 levels (pg/ml) in healthy controls and CKD patients**

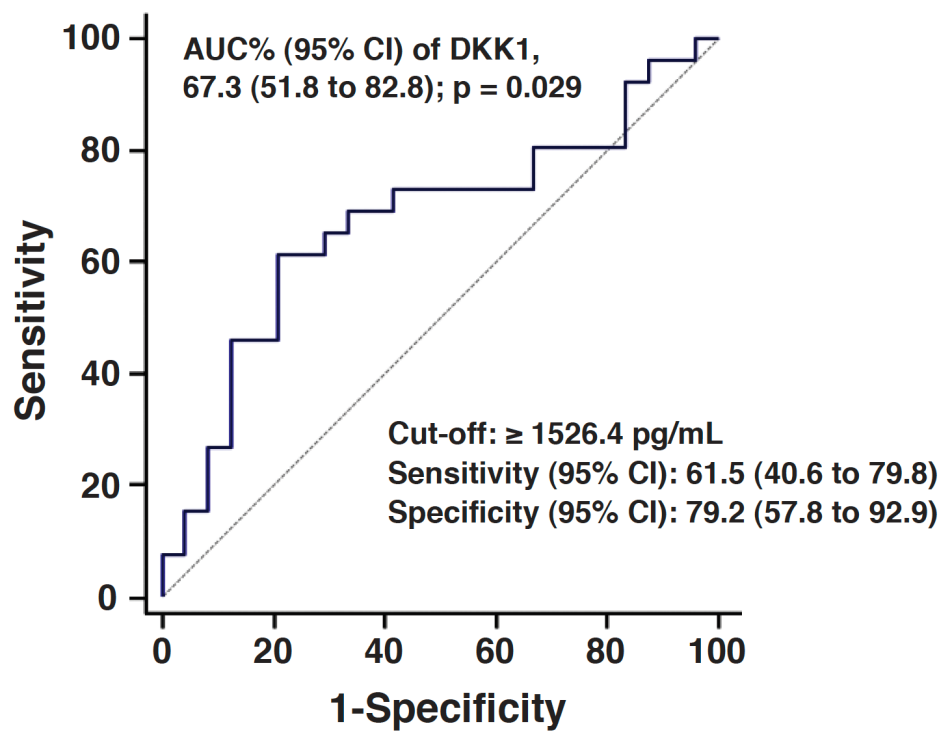
Characteristics	Mean $\pm$ SD	Median (Range)
Healthy controls (n = 15)	176.2 $\pm$ 132.2	166.0 (2.2 to 493.7)
CKD patients (n = 50)	1559.4 $\pm$ 701.6	1440.0 (574.8 to 4581.6)
CKD/DKK1-high (n = 22)	2130.8 $\pm$ 657.0	1996.8 (1526.4 to 4581.6)
CKD/DKK1-low (n = 28)	1110.6 $\pm$ 287.5	1136.4 (574.8 to 1462.8)



**Figure S1.** The flow chart of CKD patient recruitment and exclusion.



**Figure S2.** Kaplan-Meier analysis of dialysis-free survival in CKD patients with high or low serum DKK1. (A) One minus dialysis-free survival analysis for the serum DKK1-high ( $\geq 1440$  pg/mL;  $n = 25$ ) and DKK1-low ( $< 1440$  pg/mL;  $n = 25$ ) subgroups of CKD patients with stages 4-5 (log-rank test). (B) Stratification by 3-year follow-up in the serum DKK1-high and DKK1-low subgroups.



**Figure S3.** The ROC curve for the optimal cutoff point of serum DKK1 concentration. The most discrimination cutoff level for serum DKK1 was 1526.4 pg/mL with an AUC value of 0.673 ( $p = 0.029$ ).

<b>Gene name</b>	<b>Primer Sequences (5'-3')</b>	<b>Product size (bp)</b>
DKK1 (rat)	TTACTGTGGGGAAGGTCTGG ACATCCTTGGGATTGAGCTG	178
FBN (rat)	GTGGCTGCCTTCAACTTCTC AGTCCTTTAGGGCGGTCAAT	231
TGF- $\beta$ 1 (rat)	TGAGTGGCTGTCTTTTGACG TGGGACTGATCCCATTTGATT	154
Actin (rat)	CGCCAACCGCGAGAAGAT CGTCACCGGAGTCCATCA	168
DKK1 (mouse)	TCCGTCTGCCTCCGATCATC GCCTTTCCGTTTGTGCTTGG	123
FBN (mouse)	AATGGAAAAGGGGAATGGAC CTCGGTTGTCCTTCTTGCTC	244
TGF- $\beta$ 1 (mouse)	TTGCTTCAGCTCCACAGAGA TGGTTGTAGAGGGCAAGGAC	183
Actin (mouse)	AGCCATGTACGTAGCCATCC CTCTCAGCTGTGGTGGTGAA	228

**Figure S4.** Primer sequences for quantitative RT-PCR.