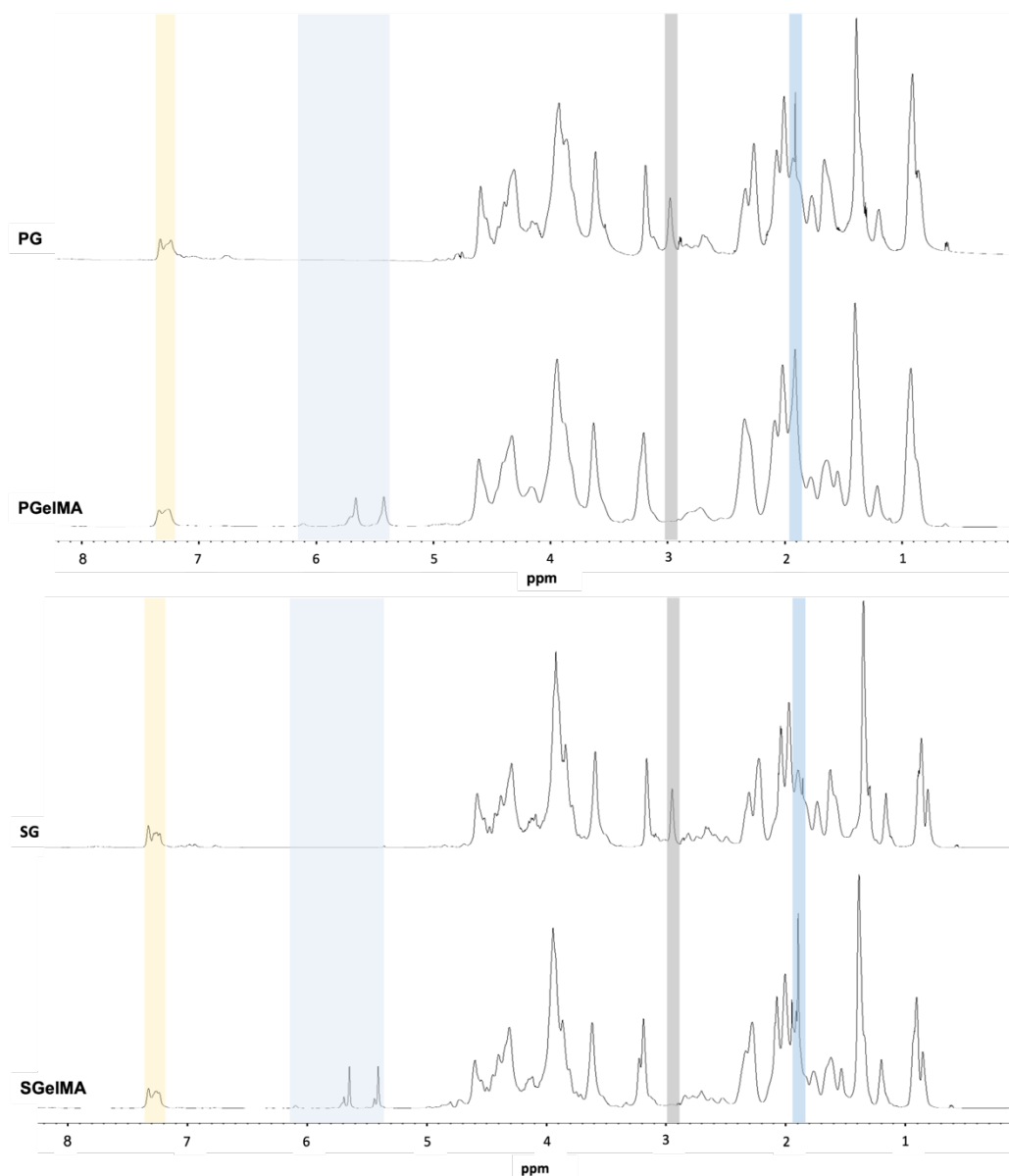


## Supplementary materials



**Figure S1.**  $^1\text{H}$ -NMR spectra of gelatin and GelMA samples. Phenylalanine aromatic protons signal (7.20-7.40 ppm) (light yellow) was used for normalization, and lysine methylene signal (2.90-2.95 ppm) was used to determine GelMA degree of functionalization (in gray). New signals related to acrylic protons of methacryl groups (5.40-6.30 ppm) and methyl protons of methacryl groups (1.90 ppm) could be observed in spectra of GelMA from porcine and salmon origin (light blue and dark blue, respectively).