

Supporting Information

Table S1 PCR primer sequences used for vector construction and qRT-PCR analysis primer sequences.

Name	Sequence(5'-3')
<i>GeneRacer RNA Oligo</i>	CGACUGGAGCACGAGGACACUGACAUGGACUGAAGGAGUAGAAA
GeneRacer 5' Primer	CGACTGGAGCACGAGGACACTGACA
<i>GeneRacer 5'Nested primer</i>	GGACACTGACATGGACTGAAGGAGTA
SITCP10-RACE	ATTAGGAGAAGCAGAGTCATGATGT
SITCP10-RACE_nested	TGGCACTTGAAAATCAGTAGTAAAA
SITCP1-RACE	GTCAAGAAGCAGTAAAAAATGTAGC
SITCP1-RACE_nested	AAATGTAGCCTGCTCCTCTTCCCCT
TCP10-F (vector construction)	gccatatg ATGAAGAGCGCAACTGGAGGAG
TCP10-R (vector construction)	gcctcgag GCATTAGGAGAAGCAGAGTCA
SIJA2-F(vector construction)	cagtTTTCGCAGCATCTAACGAGCTCTTCGgatcatgggtgtcaagaaaaaga

SIJA2-R(vector construction)	cgatTTTCGCAGCATCTAACGAGCTCTTCGctactgcttgaacccgagat
JA2 promoter-F	TCTATCCGTCCCTATTTAGTT
JA2 promoter-R	TAATAGCCGACCTTATCG
Bar-F	GAAGTCCAGCTGCCAGAAA
Bar-R	CACCATCGTCAACCACTACAT
SIJA2-CR-gRNA1	TGCAATTAAGTTTACCACC
SIJA2-CR-gRNA2	CTAGACCGAATCGAGTAGC
miR319b-RT	GTCGTATCCAGTGCAGGGTCCGAGGTATTCGCACTGGATACGACAGGGAG
miR319b-F	GAGTGTTGACTGAAGGGACA
miR319b-R	GCAGGGTCCGAGGTATTC
JA2-F	CAAAGCTAGATGAATGGGTGCT
JA2-R	GAATTTCTCGGCCTTGAGAGA
JA2p-EMSA	TTTATTTAGATTCATGTATTTGGTCCAAAACCTTACTGCTCGATAAGGTC

Actin	ACCGAAGCCCCTCTTAACCC
(reference)	GTATGGCTGACACCATCACC
U6	CATCCGATAA AATTGGAACGA
(reference)	TTTGTGCGTGTCATCCTTGCG

Figure S1 The plant phenotype of JZ34 and OE-SlmiR319 with low potassium treatment 21days.

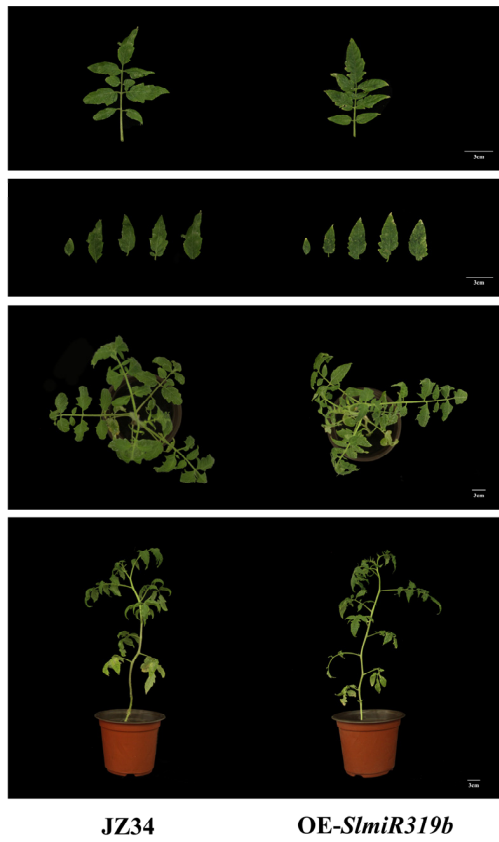


Figure S2 The root hair phenotype of sit mutants and WT under the normal condition and low potassium (LK) treatment 7d.

