

Supplementary Figure

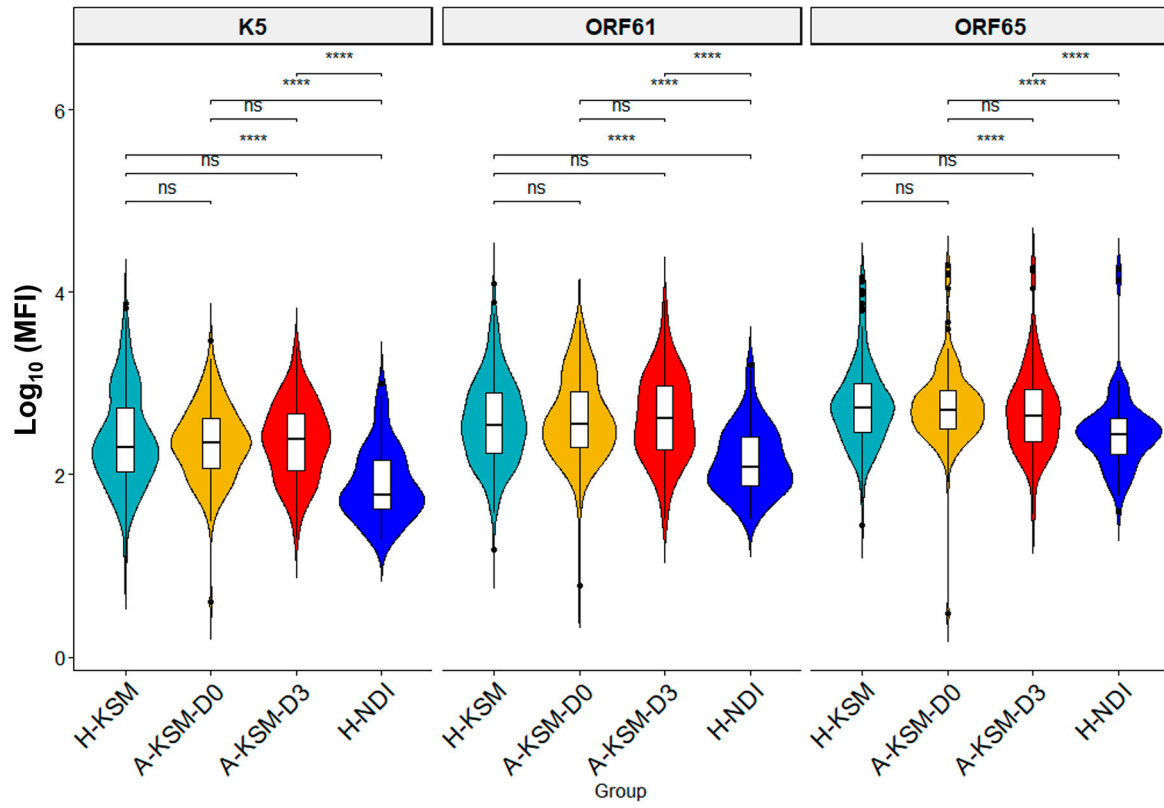


Figure S1. Additional comparison of IgG antibodies against K5, ORF61 and ORF65 antigens in A-KSM, H-KSM and H-NDI children.) (**** $p < 0.0001$, ns: $p > 0.05$).

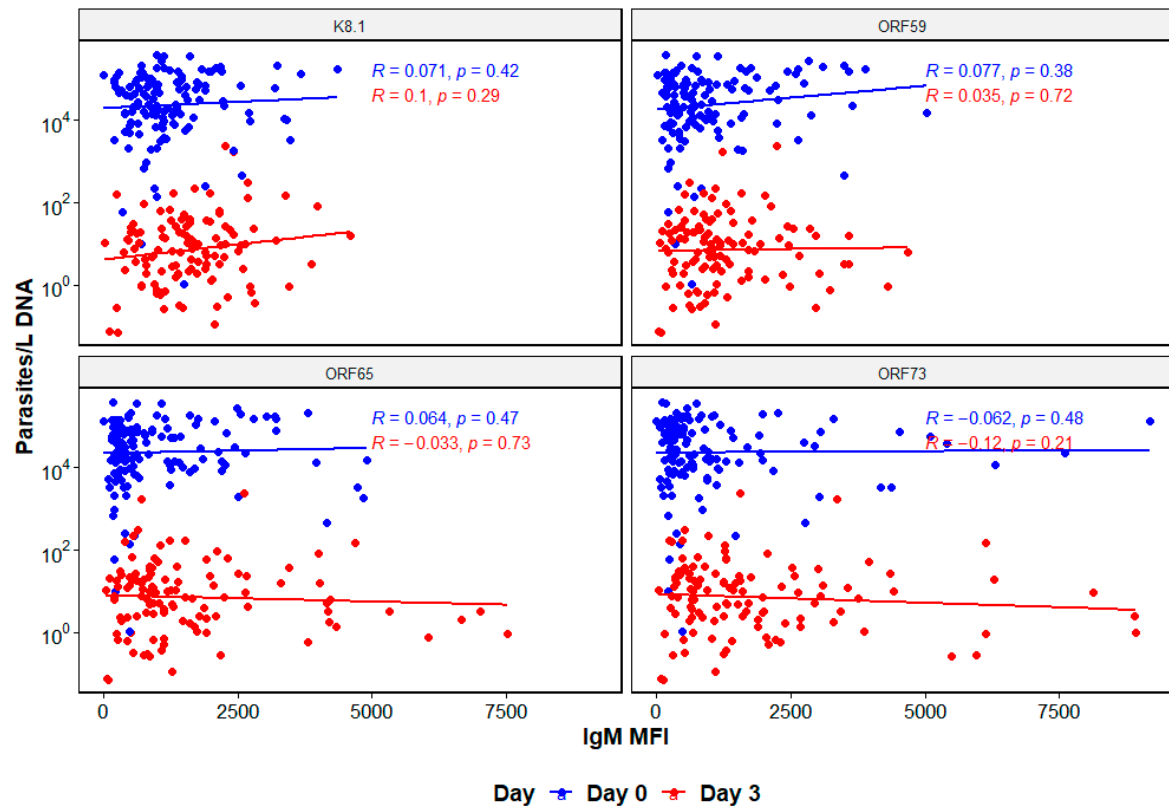


Figure S2. Correlation between anti-KSHV IgM antibodies (K8.1 ORF59, ORF65 and ORF73) with *P. falciparum* malaria parasite density in A-KSM-D0 and A-KSM-D3.

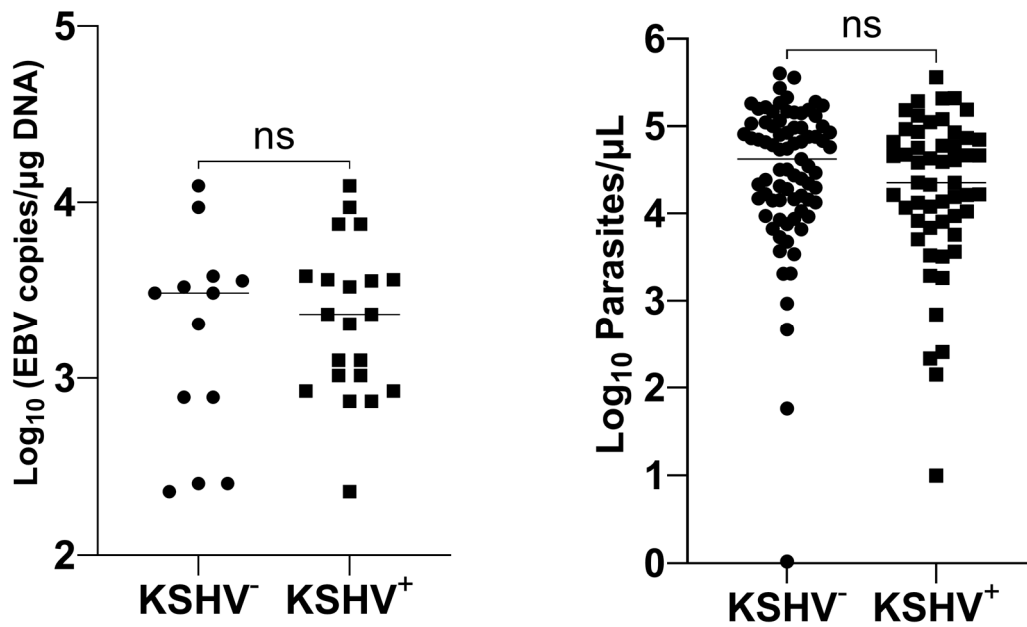


Figure S3. EBV and malaria parasite density in KSHV seropositive and seronegative A-KSM children.