

[Supplementary Material]

In Vitro Tracking of Human Umbilical Vein Endothelial Cells Using Ultra-Sensitive Quantum Dot- Embedded Silica Nanoparticles

Jaehi Kim ^{1†}, Sunray Lee ^{2†}, Yeon Kyung Lee ², Bomi Seong ¹, Hyung-Mo Kim ¹, San Kyeong ³,
Wooyeon Kim ¹, Kyeongmin Ham ¹, Xuan-Hung Pham ¹, Eunil Hahm ¹, Ji Yeon Mun ², Mukhtar
Anthony Safaa ², Yoon-Sik Lee ³, Bong-Hyun Jun ^{1,*} and Hyun-Sook Park ^{2,*}

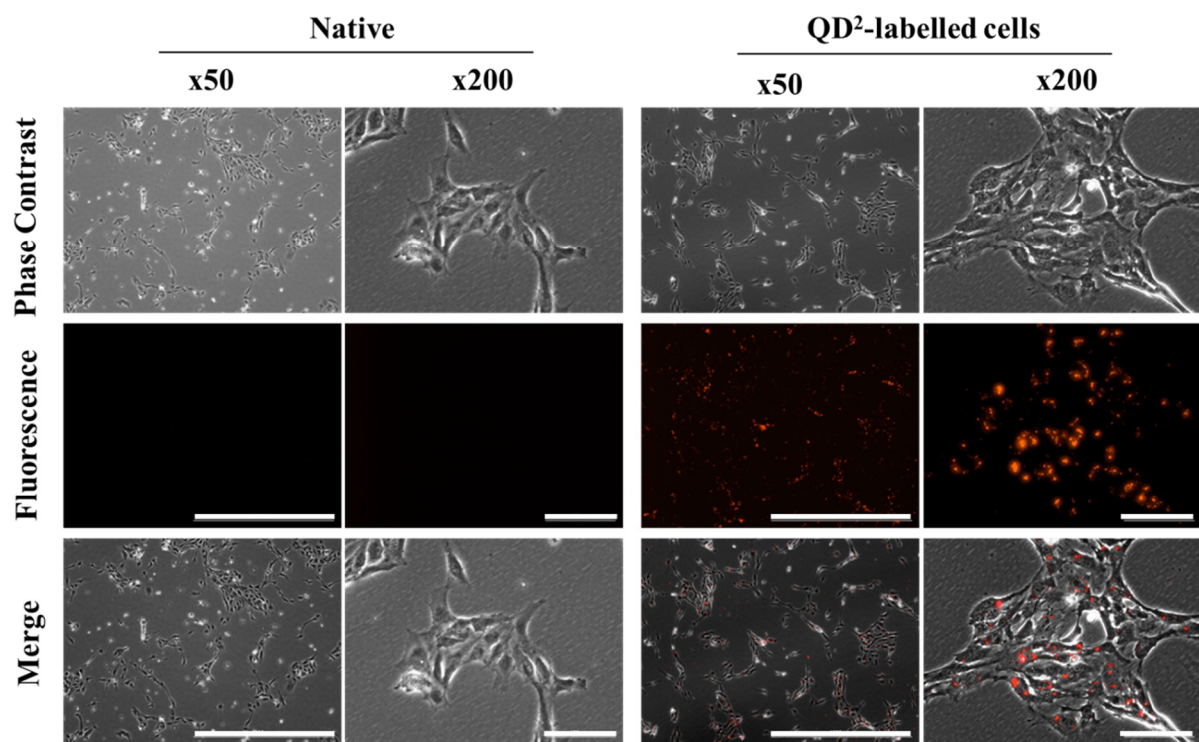


Figure S1. Phase-contrast images of HUVEC without and with QD² label (Scale bar size; 50X=1000 μ m and 200X=100 μ m).