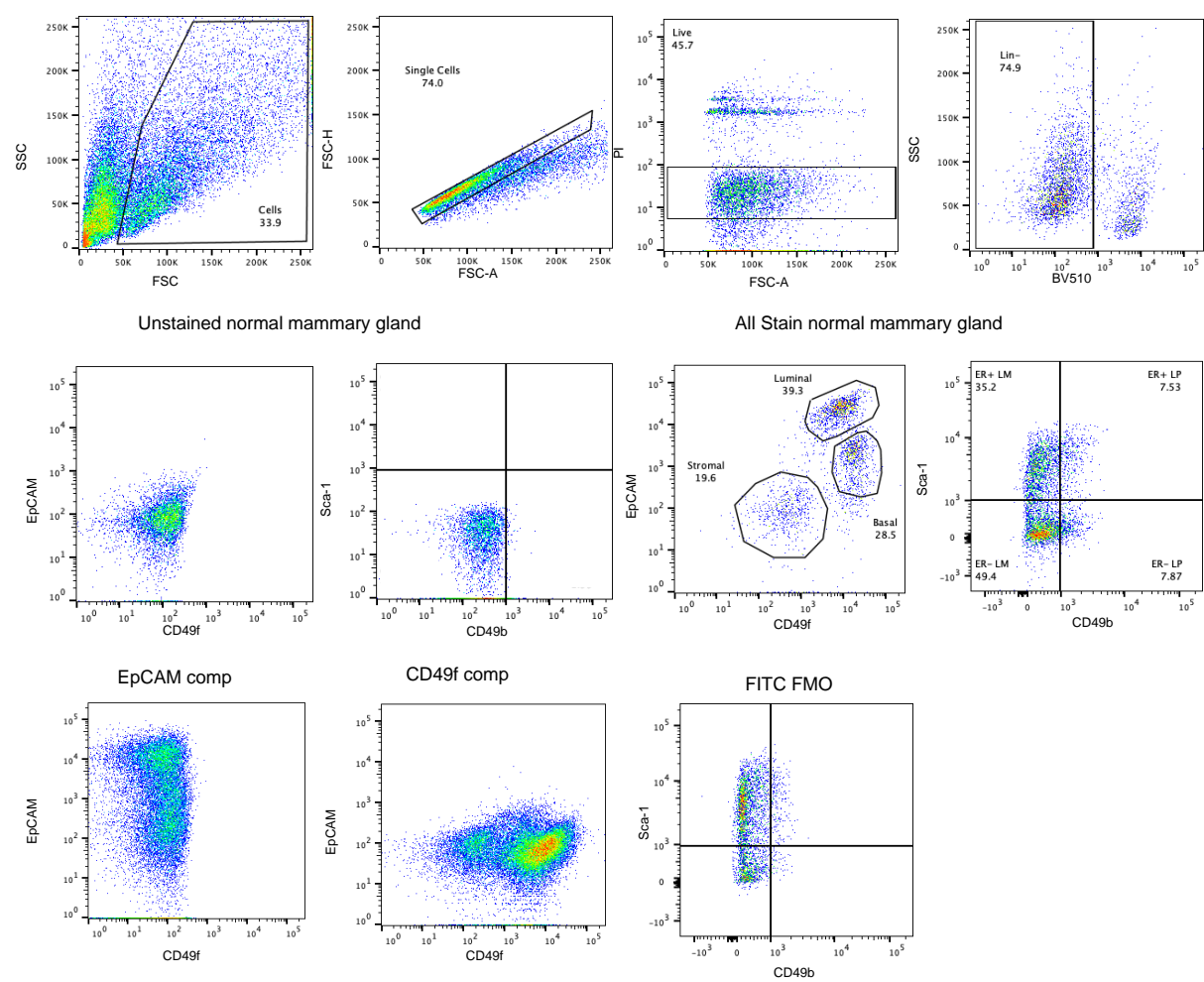


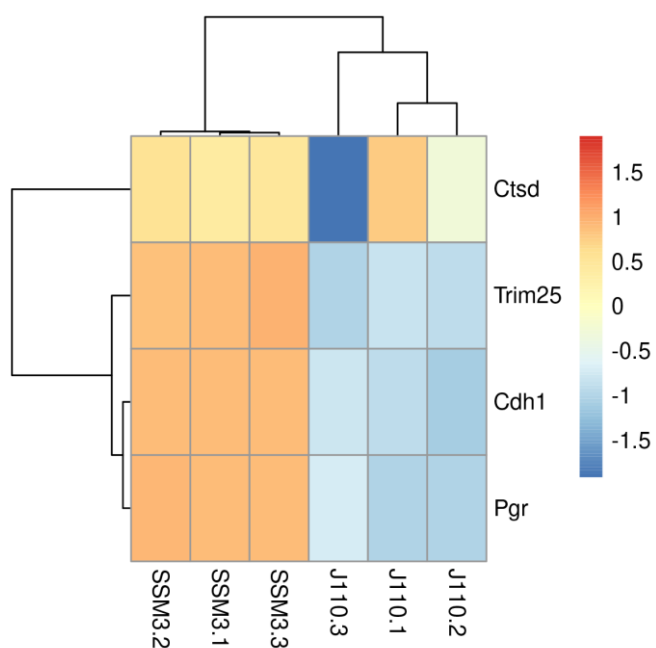
**Supplementary Table S1: Pathological assessment of syngeneic tumours**

<i>Tumour</i>	<i>Pathology</i>	<i>Background strain</i>
SSM3	Adenocarcinoma	129/SvEv
E0771	Anaplastic Carcinosarcoma	C57Bl/6
4T1.2	Sarcoma	Balb/C
D2.OR	Carcinosarcoma	Balb/C
67NR	Sarcoma	Balb/C
J110	Sarcoma	FVB/N
D2A1	Carcinosarcoma	Balb/C

**Supplementary Figure S1: FACS gating strategy**



**Supplementary Figure S1:** Representative plots of the FACS gating strategy. After gating for our cells (FSC vs SSC), singlets (FSC-A vs FSC-H), live cells (propidium iodide) and excluding lineage cells (Ter119, CD31, CD45) we are then able to delineate our epithelial gates using a combination of unstained controls, comp controls and FMOs.



**Supplementary Figure S2:** Heatmap of genes induced by estrogen in MCF7 cells when assessed in SSM3 and J110 gene expression data. Scale shows increased relative expression in red and decreased expression in blue.