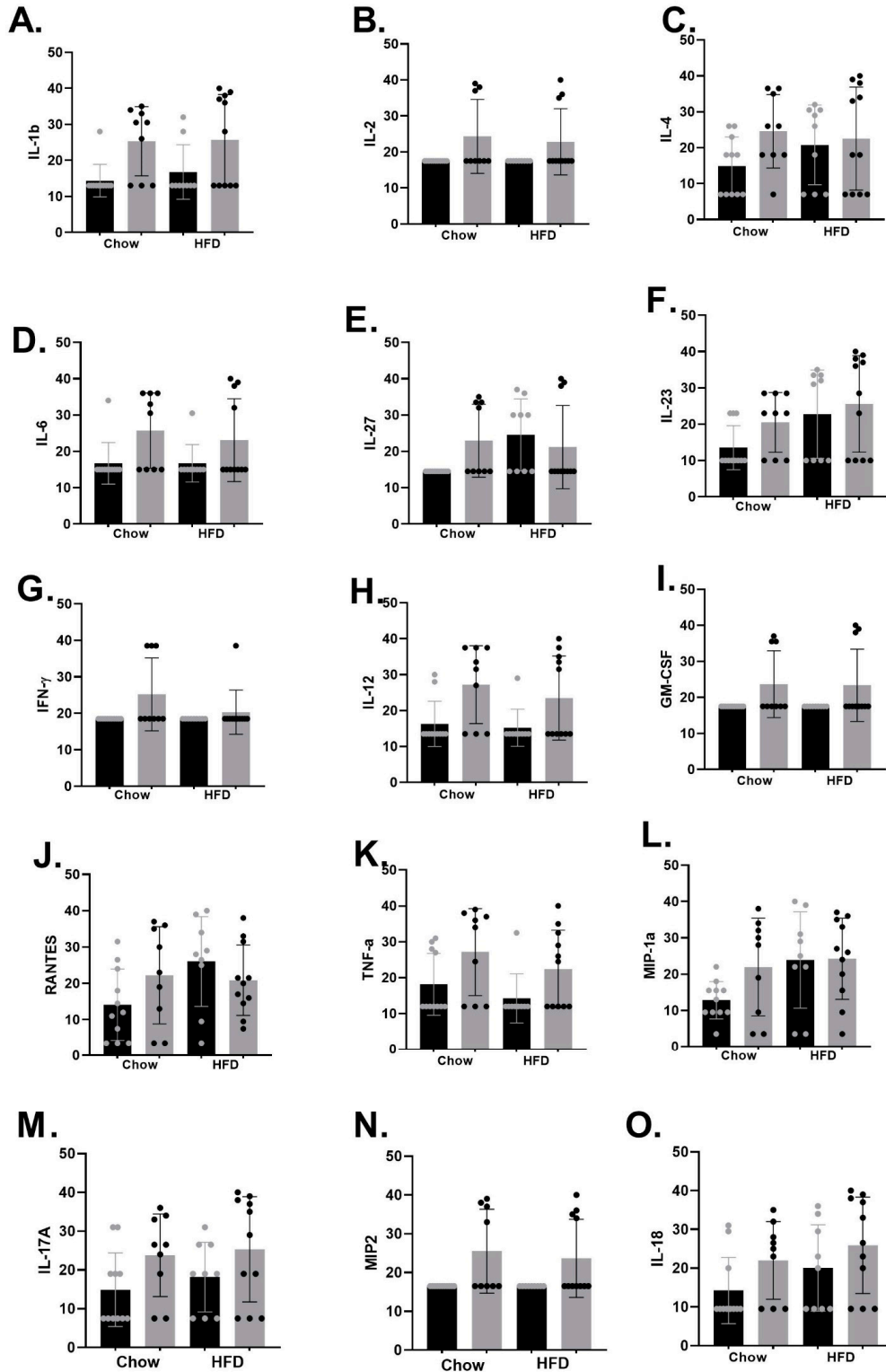
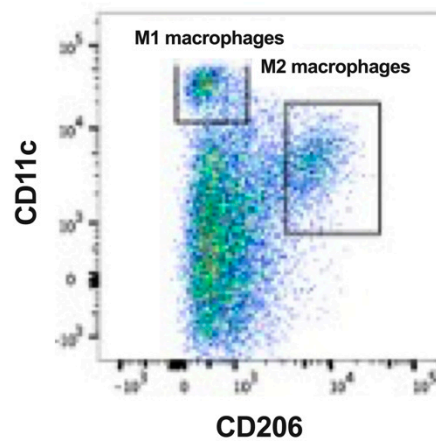
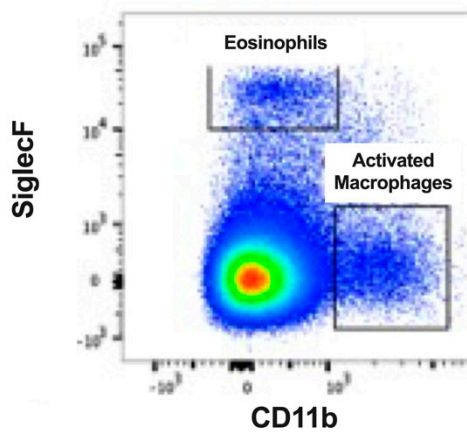
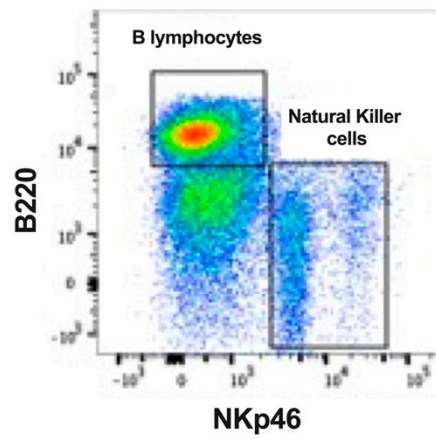
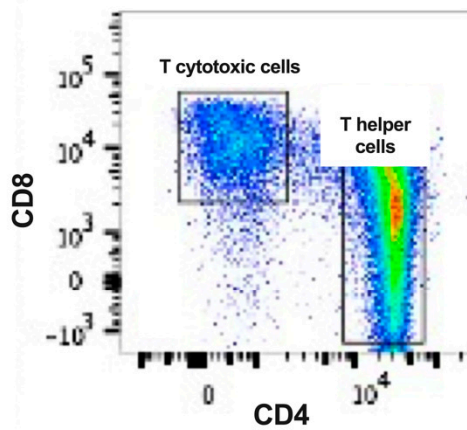
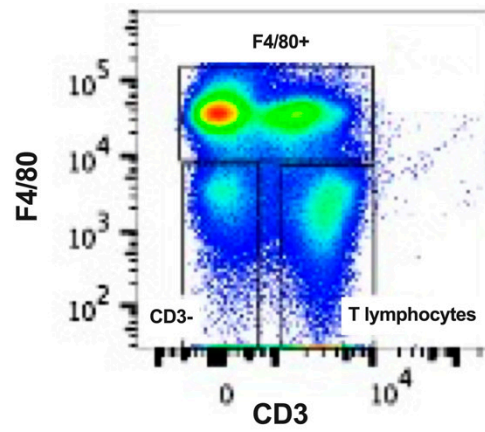
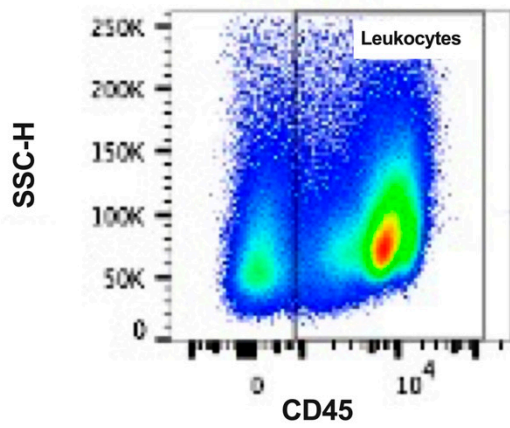
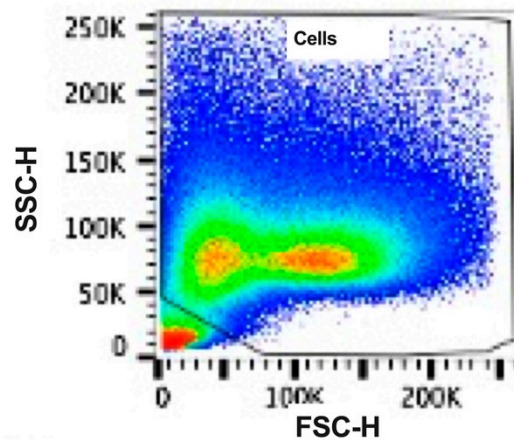
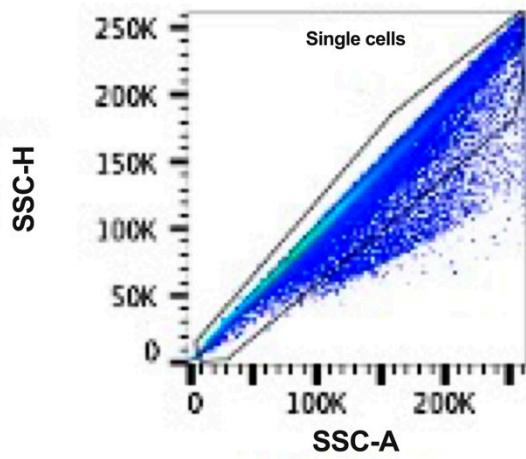


Supplementary Material



Supplementary Material Figure S1. Inflammatory markers showing no significant between group differences. **A.** IL-1b: interleukin-1 β . **B.** IL-2. **C.** IL-4. **D.** IL-6. **E.** IL-27. **F.** IL-23. **G.** IFN- γ : interferon gamma. **H.** IL-12. **I.** GM-CSF: Granulocyte-Macrophage Colony Stimulating Factor. **J.** RANTES: Regulated on Activation Normal T-cell Expressed Secreted/CCL5: C-C Motif Chemokine

Ligand 5. **K.** TNF- α : Tumour Necrosis Factor- α . **L.** MIP-1 α : Macrophage Inflammatory Protein-1 α /CCL3. **M.** IL-17A. **N.** MIP2: Macrophage Inflammatory Protein-2/CXCL2. **O.** IL-18. Black bars and grey dots represent non-irradiated mice. Grey bars and black dots represent irradiated mice.



Supplementary Material Figure S2. Gating strategy for immune cell profiling in epididymal fat tissue. **A.** Single cells were identified by plotting side scatter area against side scatter height. **B.** Cells were gated on forward scatter vs side scatter. **C.** Leukocytes cells were gated as CD45+ vs side scatter. **D.** T lymphocytes were gated as CD3+ and F4/80- and macrophages were gated as F4/80+. **E.** T lymphocytes were further divided between T helper cells (CD3+CD4+CD8-) and T cytotoxic cells (CD3+CD4-CD8+) by plotting CD4 against CD8. **F.** B lymphocytes (CD3-B220+NKp46-) and NK cells (CD3-B220-NKp46+) were obtained from the CD3- gate, and were distinguished by plotting B220 against NKp46. **G.** Activated macrophages (CD45+F4/80+CD11b+) and eosinophils were obtained from the F4/80+ gate and further divided by plotting CD11b against SiglecF. **H.** M1 (F4/80+CD11b+CD11c+) and M2 (F4/80+CD11b+CD206+) macrophages were gated from the CD11b+ cells and further distinguished by plotting CD11c against CD206.