

Figure S1. Generation of CAR T cells. (A) The plasmid profiles for CAR T and PD-L1 scFv antibody secreting CAR T. (B) The expression levels of CD19 and Her2 CAR were measured respectively along with GFP which detected by flow cytometry.

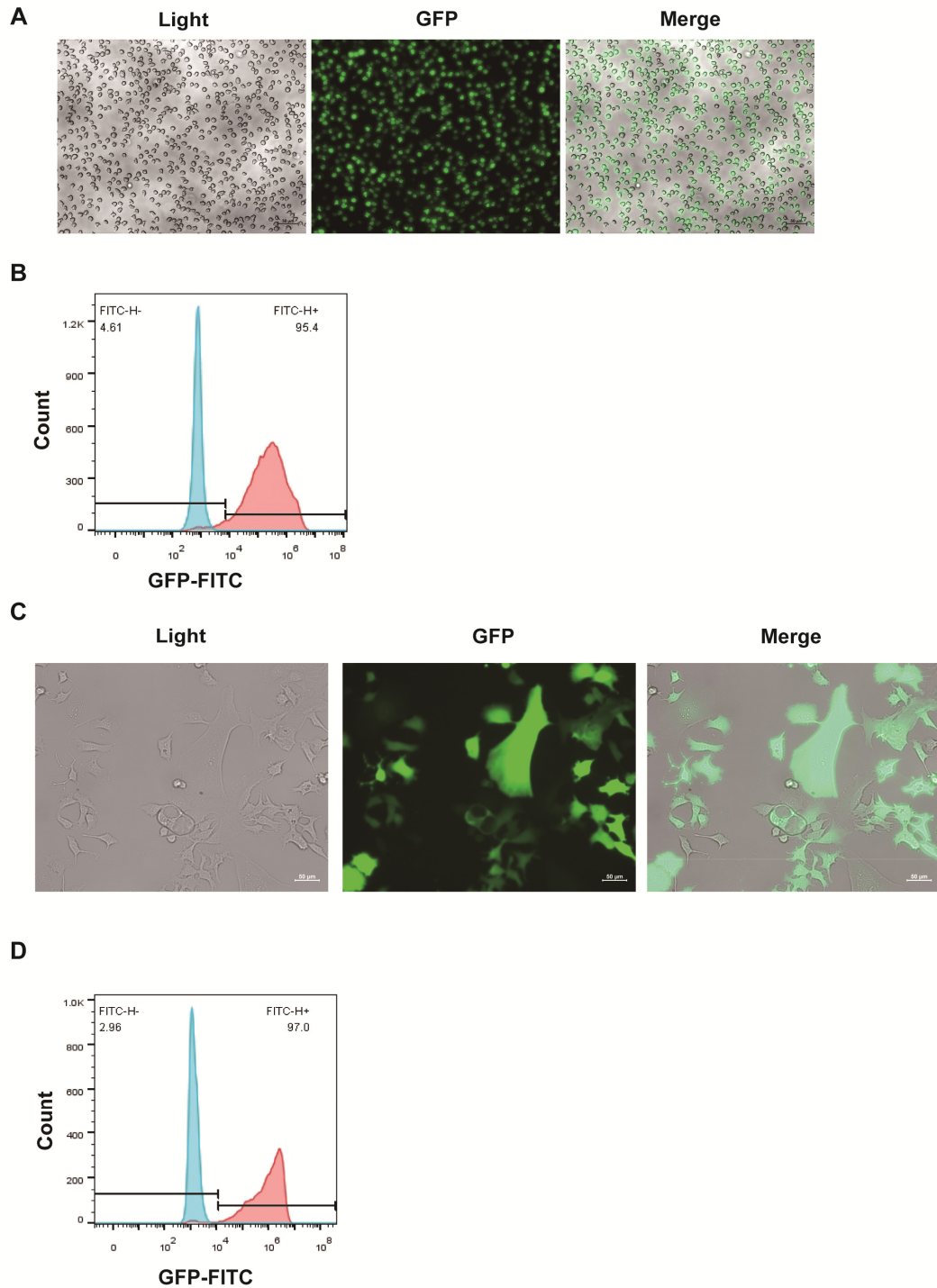


Figure S2. Establishment of Luc+Nalm6 cell line and Luc+HCC1954 cell line. (A) The GFP expression in Luc+Nalm6 cells was observed under fluorescence microscope. (B) The expression level of GFP in Luc+Nalm6 cells was detected by flow cytometry using parental Nalm6 cells as a control. (C) The GFP expression in Luc+HCC1954 cells was observed under fluorescence microscope. (D) The expression level of GFP in Luc+HCC1954 cells was detected by flow cytometry using parental Nalm6 cells as a control.

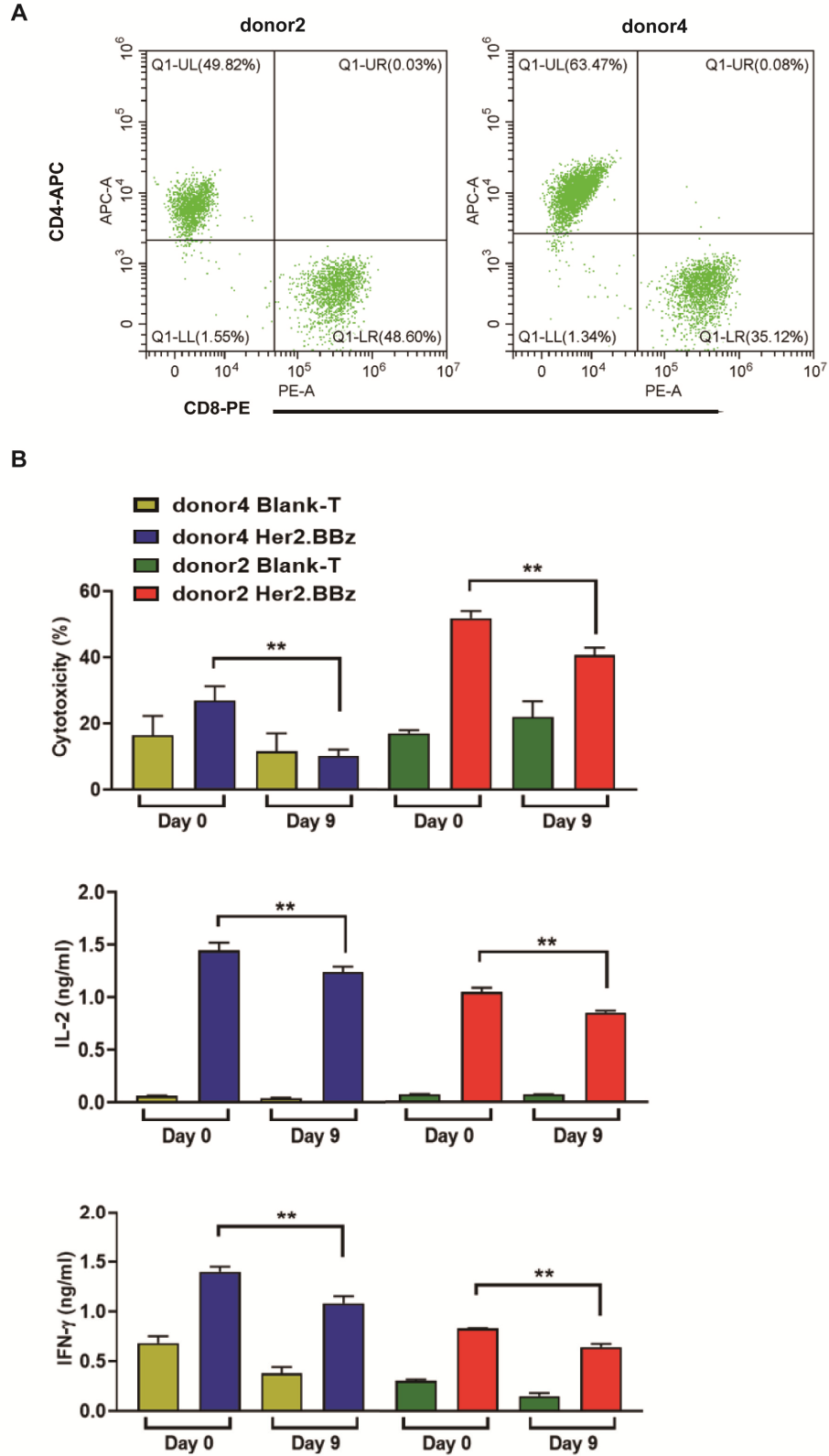


Figure S3. The compare of donor 2 and donor 4. (A) The proportions of CAR+CD4<sup>+</sup> and CAR+CD8<sup>+</sup> T cells were measured by flow cytometry. (B) The cytotoxicity and the cytokine secretion were measured before (day 0) and after (day 9) antigen stimulation at the E:T ratio of 1:10 (n=3).