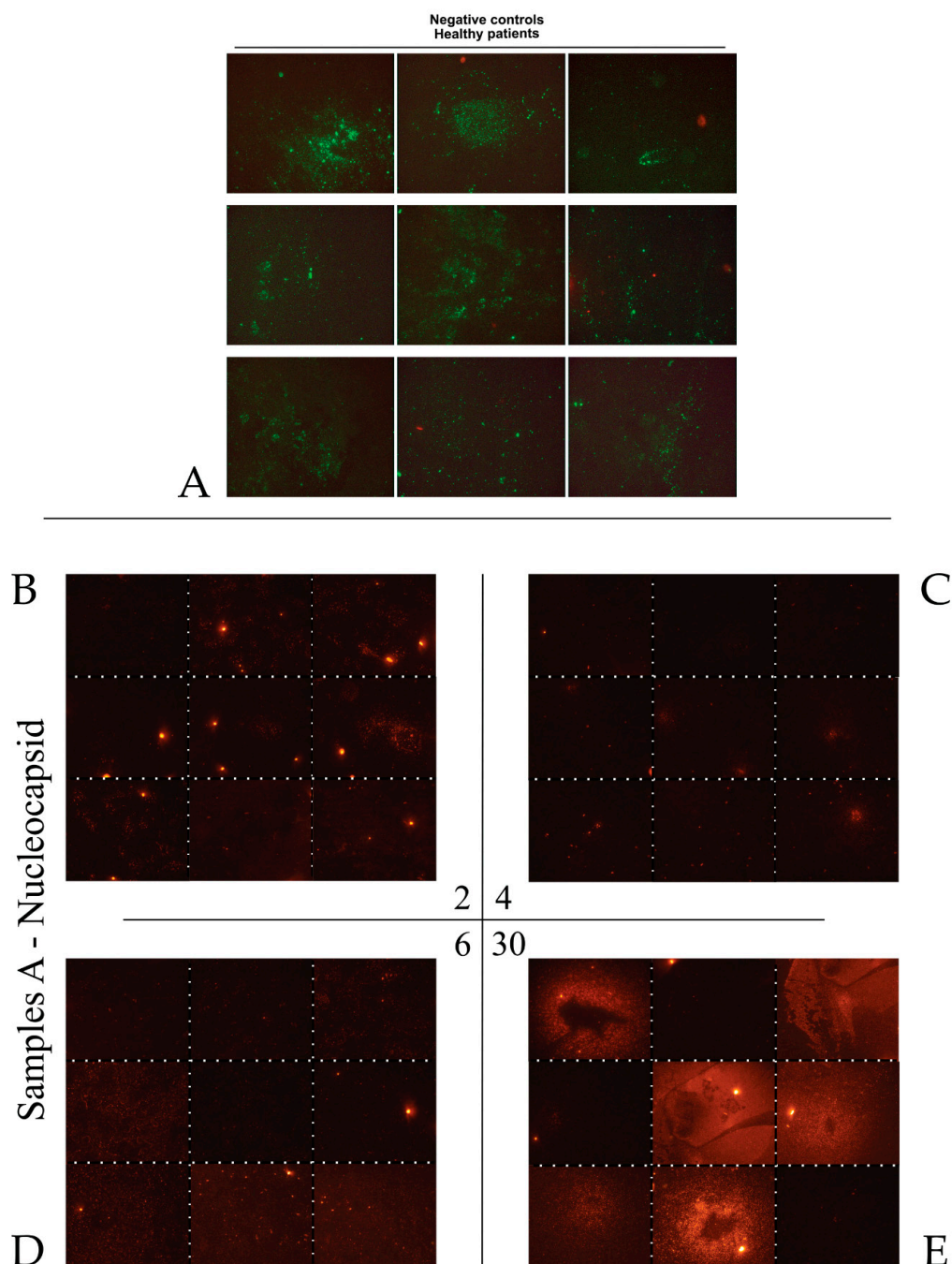
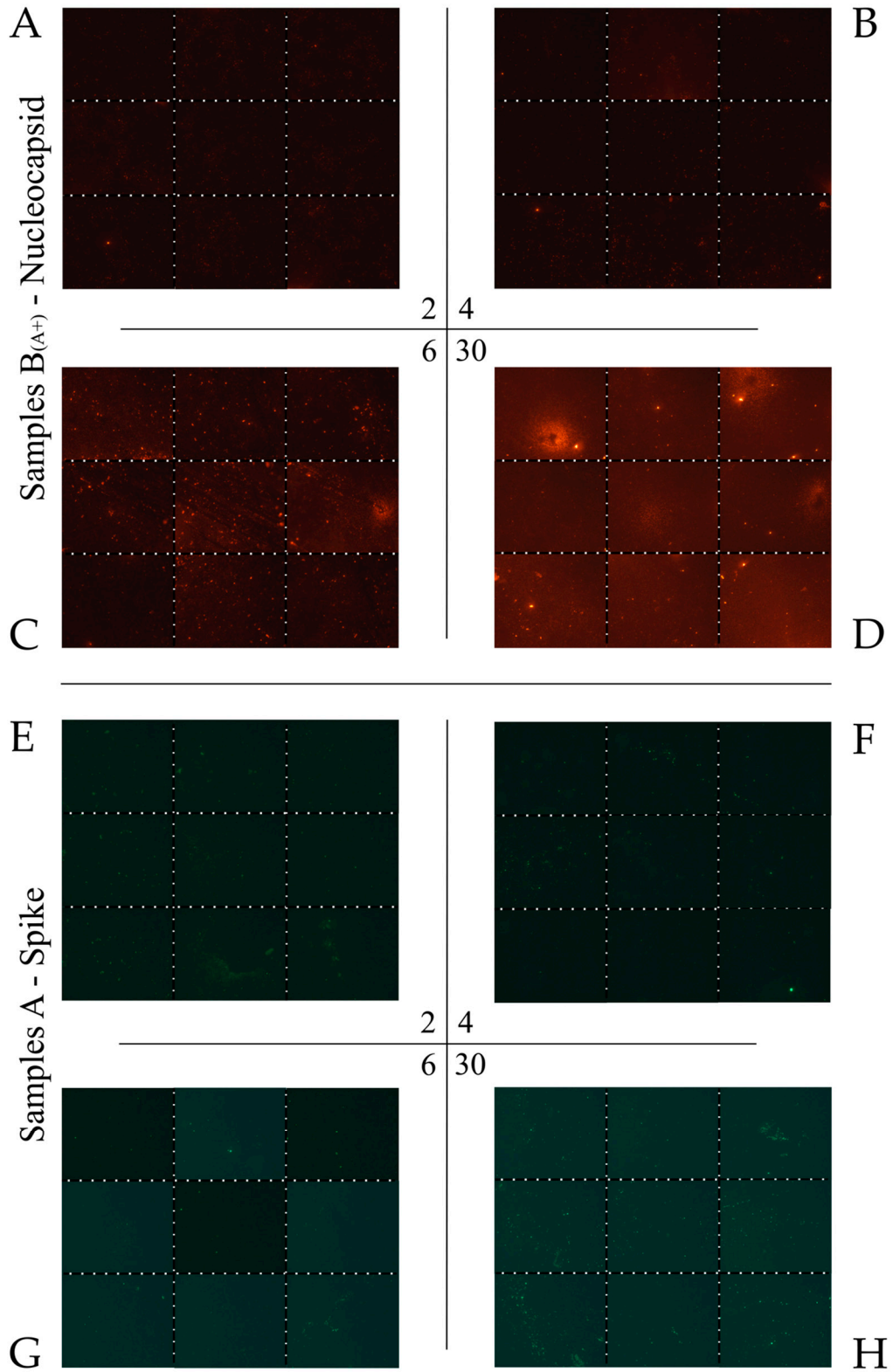


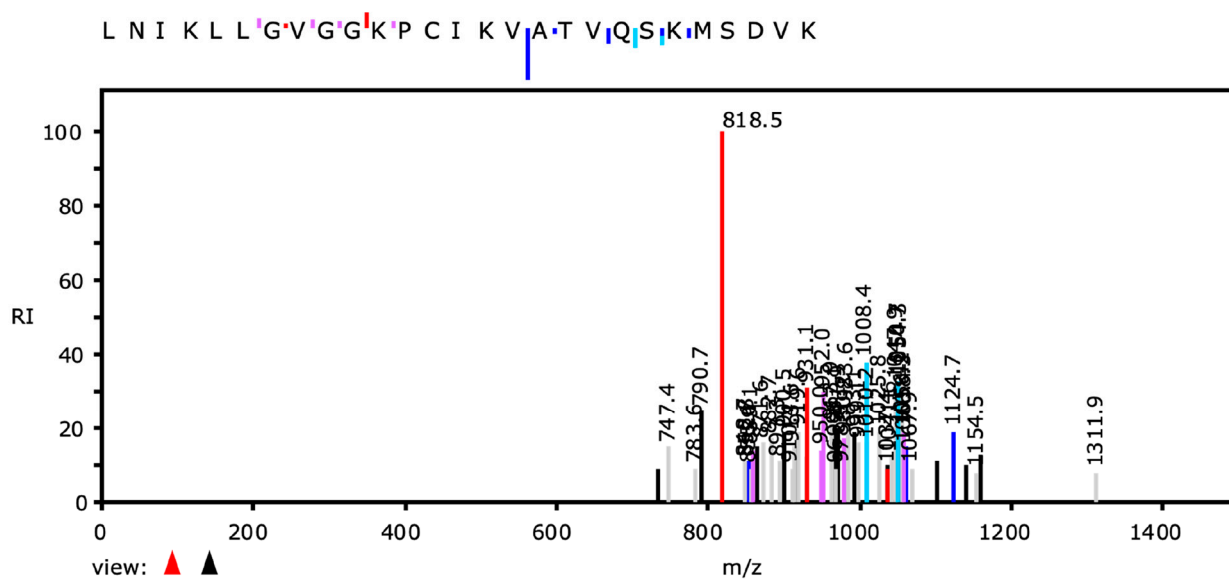
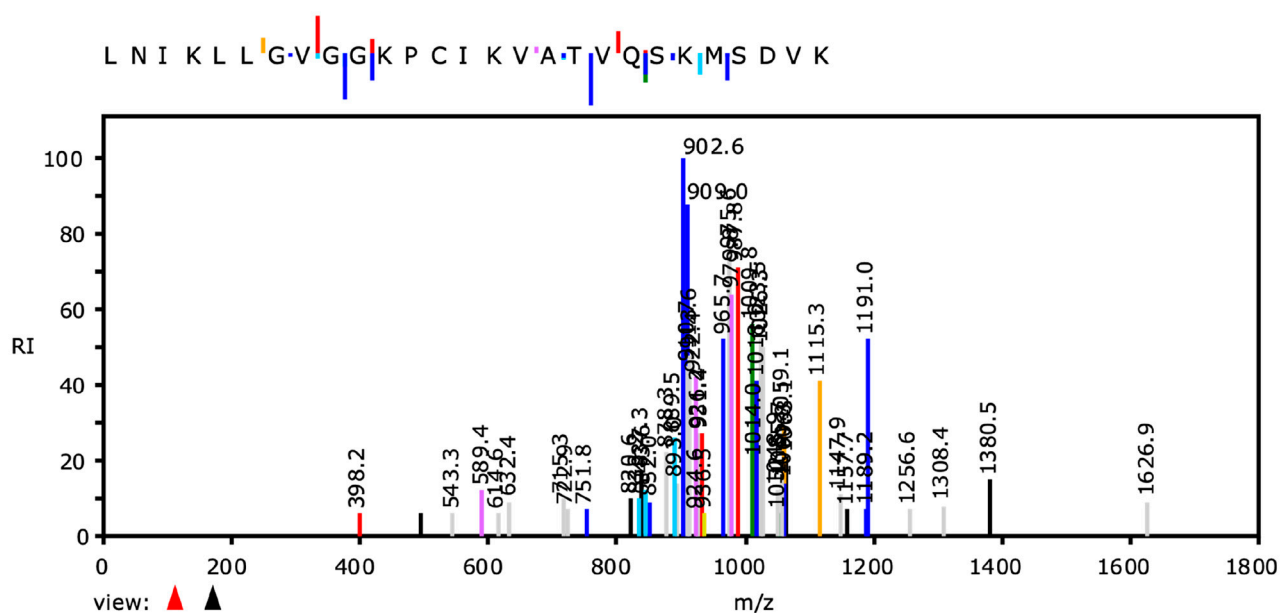
Figures S1 and S2 of the supplementary materials (sm) show the tests performed, including the controls (Figure S1, panel A)



**Figure S1.** (supplementary materials, upper part) shows the negative controls of 9 samples (neg-B) from healthy patients (Panel A) of the merge signal of gram-positive bacteria (green) and no signal for nucleocapsid proteins (red background). The bottom part shows samples A (Panels B, C, D, E) with increased nucleocapsid protein signals up to the 30th day of bacterial culture. **Panel A**, samples derived from 30 days culture of healthy patients. **Panel B**, samples A from cultures after two days. **Panel C**, samples A from cultures after four days. **Panel D**, samples A from cultures after 6 days. **Panel E**, samples A from cultures after 30 days.



**Figure S2** (supplementary materials, upper part) shows the immunofluorescences of sample B<sub>(A+)</sub> with the nucleocapsid signal increasing from day 2 to day 30 of bacterial culture (Panel A-D). The lower part shows the immunofluorescence of the spike protein - increasing from day 2 to day 30 in samples A of bacterial culture (Panel E-H). **Panel A:** samples B derived from culture after 2. **Panel B:** samples B from cultures after four days. **Panel C:** samples B from cultures after six days. **Panel D:** samples B from cultures after 30 days. **Panel E-H:** samples A, Spike protein signal, from cultures after 30 days.



**Figure S3:** Higher magnification detail of the spectra presented in Figure 4 panel B of the manuscript. The upper image is the sequence: LNIKLLGVGGKPCIKVATVQSKMSDVK ; the lower image is the sequence: LNIKLLGVGGKPCIKVATVQSKMSDVK