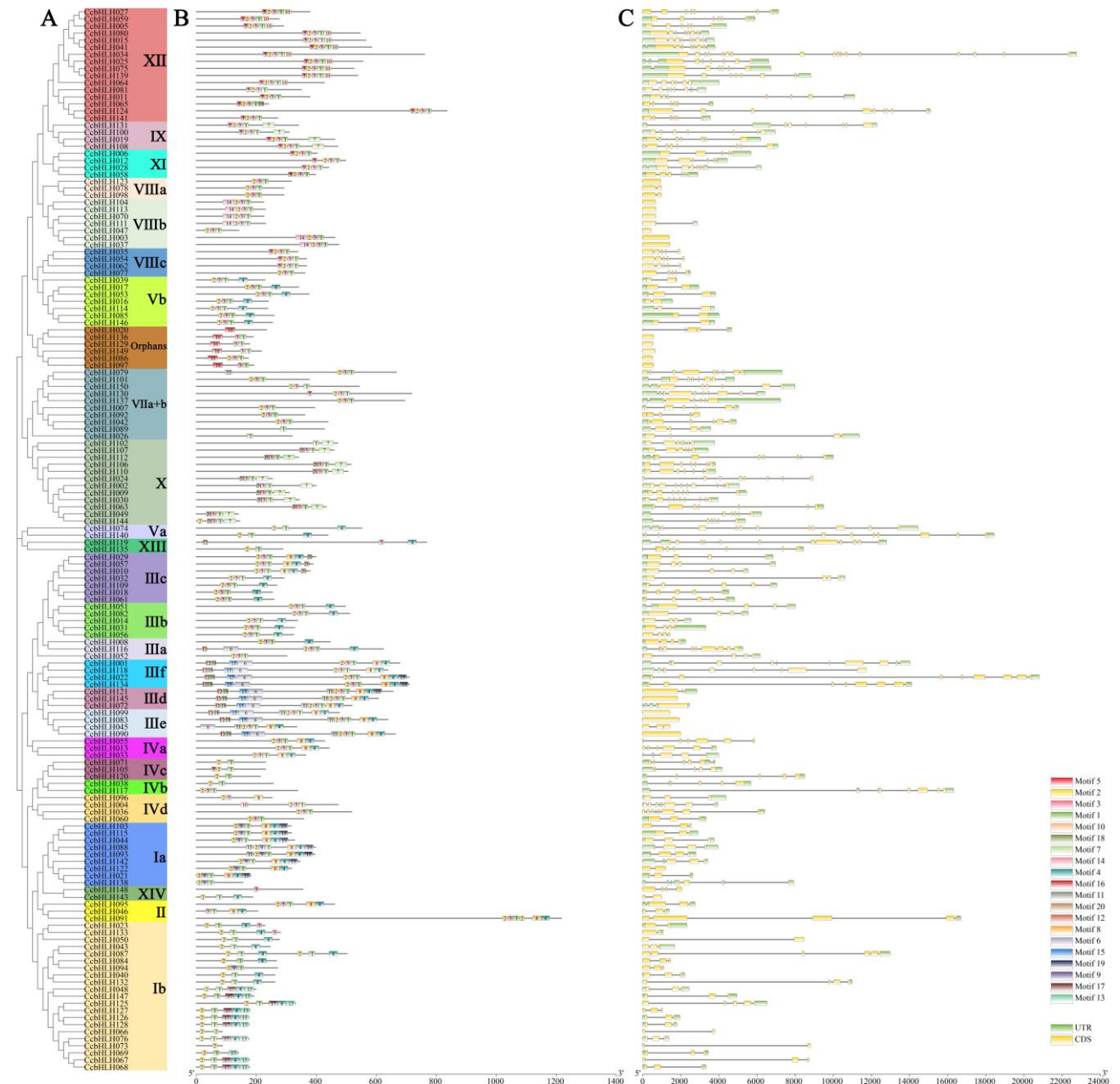


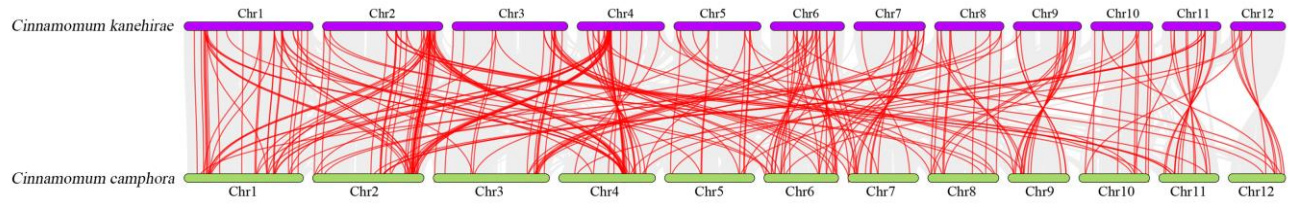
# Supplementary Material

## 1 Supplementary Figures and Tables

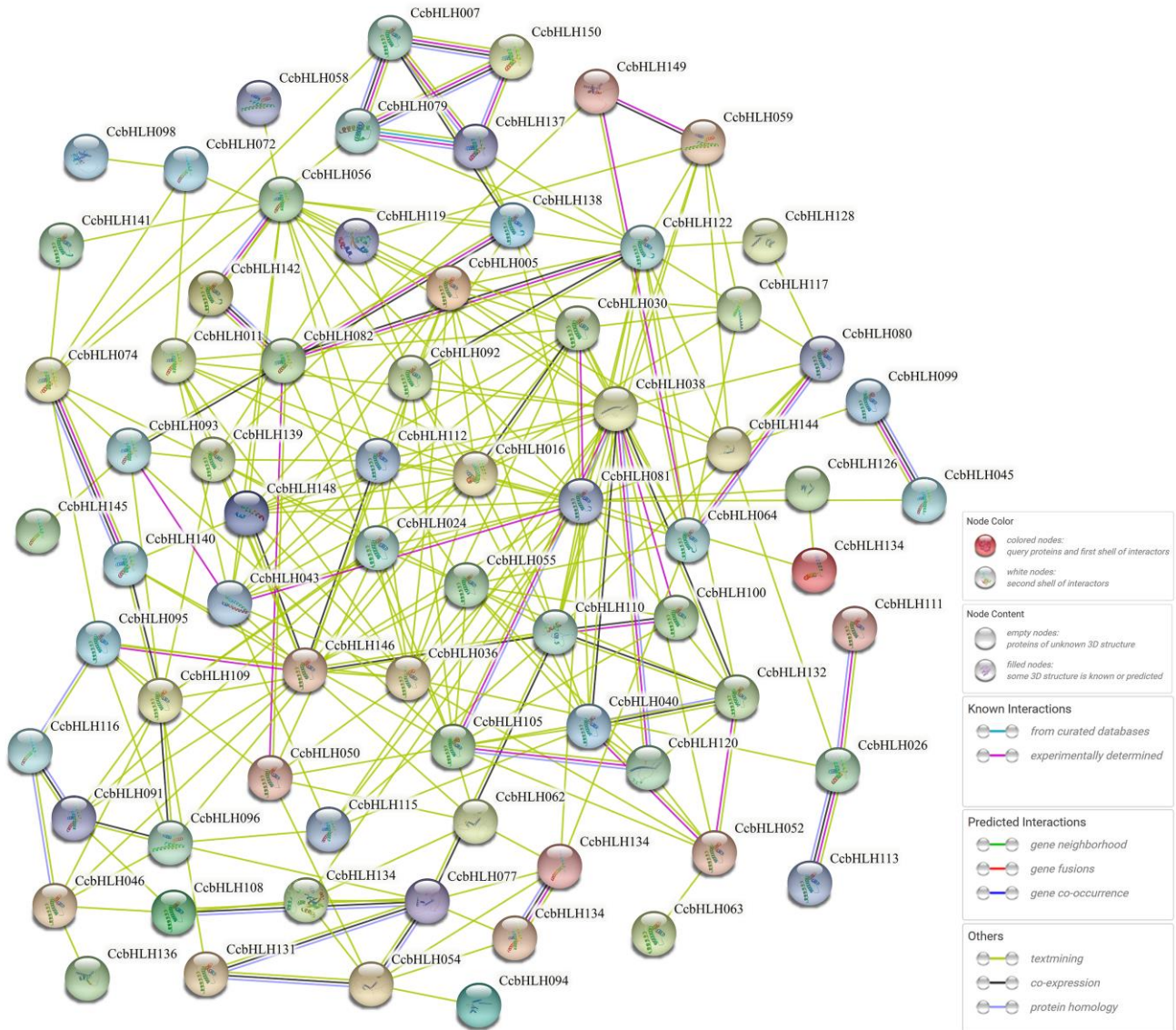
### 1.1 Supplementary Figures



**Figure S1.** Phylogenetic relationships, conserved motifs, and gene structures of the *CcbHLH* genes. (A) Phylogenetic trees of 150 *CcbHLH* proteins. The 26 subfamilies are marked with different background colours. (B) Conserved motifs of 150 *CcbHLH* proteins. Twenty motifs are illustrated by boxes of different colours. (C) Gene structures of 150 *CcbHLH*s. Coding sequence and untranslated regions are shown in yellow and green boxes; introns are shown in black lines.



**Figure S2.** Collinearity analysis of the *bHLH* TF family in *C. camphora* and *C. kanehirae*. Red lines link identified collinear genes.



**Figure S3.** Protein interaction network for CcbHLHs according to CcbHLHs orthologs in *Arabidopsis thaliana*.

## 1.2 Supplementary Tables

**Table S1.** Basic protein information of CcbHLH family members

No.	Gene name	Chr	Location		MW (kDa)	pI	I. I.	Protein (aa)	GRAVY
Ccam01G000415	<i>CcbHLH001</i>	Chr1	8633570	8647748	76.08	5.26	52.34	677	-0.445
Ccam01G000702	<i>CcbHLH002</i>	Chr1	12930089	12935151	43.72	7.2	64.05	398	-0.57
Ccam01G000808	<i>CcbHLH003</i>	Chr1	14628373	14629758	50.76	5.76	45.79	461	-0.552
Ccam01G000843	<i>CcbHLH004</i>	Chr1	15329593	15333546	54.51	6.48	46.81	472	-0.344
Ccam01G000875	<i>CcbHLH005</i>	Chr1	15868845	15873244	31.63	5.62	54.2	290	-0.576
Ccam01G000952	<i>CcbHLH006</i>	Chr1	17043099	17048786	44.02	6.11	50.64	402	-0.654
Ccam01G001268	<i>CcbHLH007</i>	Chr1	23768793	23773817	43.52	6.67	64.81	394	-0.676
Ccam01G001621	<i>CcbHLH008</i>	Chr1	38514404	38516661	49.48	4.99	39.35	446	-0.758
Ccam01G001836	<i>CcbHLH009</i>	Chr1	47450836	47456267	33.74	6.66	74.67	309	-0.561
Ccam01G001867	<i>CcbHLH010</i>	Chr1	48228951	48234486	42.88	4.79	58.24	378	-0.523
Ccam01G002223	<i>CcbHLH011</i>	Chr1	55521306	55532421	41.19	5.44	56.15	378	-0.579
Ccam01G002231	<i>CcbHLH012</i>	Chr1	55640969	55645405	55.01	7.14	56.55	497	-0.618
Ccam01G002454	<i>CcbHLH013</i>	Chr1	59853203	59857053	49.66	6.68	52.9	442	-0.423
Ccam01G002485	<i>CcbHLH014</i>	Chr1	60343673	60346213	38.04	5.07	61.73	336	-0.526
Ccam01G003092	<i>CcbHLH015</i>	Chr1	70033610	70037365	60.93	5.64	51.28	564	-0.653
Ccam01G003242	<i>CcbHLH016</i>	Chr1	72247038	72248607	26.75	9.21	57.47	239	-0.585
Ccam01G003485	<i>CcbHLH017</i>	Chr1	76487044	76489984	37.4	6.2	52.5	340	-0.495
Ccam02G000043	<i>CcbHLH018</i>	Chr2	908842	913367	28.9	5.37	53.19	253	-0.528
Ccam02G000340	<i>CcbHLH019</i>	Chr2	5985187	5991369	49.3	6.89	62.71	461	-0.634
Ccam02G001398	<i>CcbHLH020</i>	Chr2	38979237	38983895	26.48	11.42	75.3	233	-0.766
Ccam02G001693	<i>CcbHLH021</i>	Chr2	45180672	45183304	20.15	8.37	67.29	181	-0.086
Ccam02G001706	<i>CcbHLH022</i>	Chr2	45365203	45385997	79.78	5.64	59.56	709	-0.611
Ccam02G001730	<i>CcbHLH023</i>	Chr2	45830135	45832458	25.39	9.51	56.11	228	-0.56
Ccam02G001915	<i>CcbHLH024</i>	Chr2	48708183	48717113	28.39	9.22	53.99	253	-0.714
Ccam02G002109	<i>CcbHLH025</i>	Chr2	52039524	52046134	59.33	5.67	49.14	554	-0.549
Ccam02G002686	<i>CcbHLH026</i>	Chr2	61901018	61912375	34.81	5.02	54.63	319	-0.619
Ccam02G002773	<i>CcbHLH027</i>	Chr2	63379787	63386905	41.12	7.15	48.97	378	-0.499
Ccam02G002908	<i>CcbHLH028</i>	Chr2	65370732	65376956	47.64	8.17	47.87	441	-0.552
Ccam02G002983	<i>CcbHLH029</i>	Chr2	66483026	66489866	44.37	4.98	62.23	398	-0.493
Ccam02G003003	<i>CcbHLH030</i>	Chr2	66819599	66823545	38.06	7.14	65.52	343	-0.494
Ccam02G003014	<i>CcbHLH031</i>	Chr2	67027899	67031202	37.03	5.05	58.15	327	-0.455
Ccam02G003024	<i>CcbHLH032</i>	Chr2	67224795	67235404	33.01	4.49	70.27	292	-0.621
Ccam02G003029	<i>CcbHLH033</i>	Chr2	67296203	67300181	40.29	7.74	57.13	364	-0.409
Ccam02G003063	<i>CcbHLH034</i>	Chr2	67829470	67852217	85.28	6.25	51.65	760	-0.535
Ccam02G003130	<i>CcbHLH035</i>	Chr2	68734621	68736580	37.58	4.98	42.13	337	-0.605
Ccam02G003212	<i>CcbHLH036</i>	Chr2	69942348	69948752	58	7.63	70	517	-0.462
Ccam02G003256	<i>CcbHLH037</i>	Chr2	70642905	70644332	51.47	5.56	54.45	475	-0.552
Ccam03G000043	<i>CcbHLH038</i>	Chr3	749033	754709	28.16	5.79	55.8	256	-0.68
Ccam03G000529	<i>CcbHLH039</i>	Chr3	7684397	7686184	25.51	9.28	49.4	228	-0.434
Ccam03G001506	<i>CcbHLH040</i>	Chr3	25046906	25049115	29.24	6.01	72.44	261	-0.484
Ccam03G001581	<i>CcbHLH041</i>	Chr3	26751911	26755707	63.53	6.41	55.31	584	-0.719
Ccam03G002509	<i>CcbHLH042</i>	Chr3	62978977	62983892	48.27	8.59	58.09	438	-0.617

Ccam03G002787	CcbHLH043	Chr3	67684822	67686496	27.33	8.57	52.77	245	-0.417
Ccam03G002879	CcbHLH044	Chr3	69167145	69170907	37.08	5.93	59.76	327	-0.435
Ccam03G002889	CcbHLH045	Chr3	69301087	69302520	36.53	6.86	52.05	334	-0.322
Ccam03G002937	CcbHLH046	Chr3	69983475	69984873	23.44	9.92	37.35	204	-0.445
Ccam03G003221	CcbHLH047	Chr3	74526055	74526480	15.85	9.1	86.82	141	-0.634
Ccam04G000139	CcbHLH048	Chr4	2160052	2162481	22.73	6.56	46.73	198	-0.51
Ccam04G000570	CcbHLH049	Chr4	10374743	10380969	15.61	9.69	53.25	139	-0.361
Ccam04G000814	CcbHLH050	Chr4	18031684	18040131	30.82	9.82	47.34	276	-0.587
Ccam04G000873	CcbHLH051	Chr4	23141882	23149892	54.32	5.21	60.59	496	-0.505
Ccam04G001130	CcbHLH052	Chr4	33259778	33265939	33.73	5.58	45.97	301	-0.304
Ccam04G001284	CcbHLH053	Chr4	36996649	37000457	41.02	6.4	53.48	375	-0.543
Ccam04G001648	CcbHLH054	Chr4	43092283	43094476	40.39	4.74	54.53	366	-0.645
Ccam04G001694	CcbHLH055	Chr4	43680225	43686090	47.98	4.97	47.33	427	-0.566
Ccam04G001699	CcbHLH056	Chr4	43765700	43767138	43.15	4.92	58.96	383	-0.607
Ccam04G001717	CcbHLH057	Chr4	44075981	44082942	44.11	4.66	67.78	388	-0.508
Ccam04G001759	CcbHLH058	Chr4	44628142	44631029	43.4	6.46	48.19	396	-0.558
Ccam04G001815	CcbHLH059	Chr4	45561586	45567483	29.6	5.91	56.02	276	-0.657
Ccam04G001837	CcbHLH060	Chr4	45974680	45978002	39.88	8.68	65.99	357	-0.459
Ccam04G001949	CcbHLH061	Chr4	47535163	47539977	29.06	5.14	57.45	258	-0.576
Ccam04G002165	CcbHLH062	Chr4	51029970	51031983	40.3	4.68	58.14	366	-0.645
Ccam04G002172	CcbHLH063	Chr4	51168043	51177534	46.97	6.26	50.47	432	-0.404
Ccam04G002219	CcbHLH064	Chr4	51851381	51855394	47.65	5.64	52.3	426	-0.615
Ccam04G002418	CcbHLH065	Chr4	55009260	55012952	27.24	6.45	57.86	240	-0.572
Ccam04G002640	CcbHLH066	Chr4	58124582	58128376	10.12	10.73	57.71	86	-1.016
Ccam04G002642	CcbHLH067	Chr4	58148263	58156982	19.93	9.13	54.49	177	-0.238
Ccam04G002643	CcbHLH068	Chr4	58173005	58176327	19.68	9.62	50.01	177	-0.229
Ccam04G002644	CcbHLH069	Chr4	58193811	58197262	16.05	10.16	45.67	140	-0.574
Ccam05G000235	CcbHLH070	Chr5	3652871	3653548	25.61	5.68	68.07	225	-0.692
Ccam05G000742	CcbHLH071	Chr5	11705537	11709597	25.64	5.39	59.72	230	-0.724
Ccam05G000818	CcbHLH072	Chr5	12992133	12994591	57.14	6.52	41.2	518	-0.367
Ccam05G000902	CcbHLH073	Chr5	14968097	14976907	10.04	9.3	45.83	86	-0.595
Ccam05G001253	CcbHLH074	Chr5	24204803	24219252	60.56	6.22	52.15	551	-0.822
Ccam05G001269	CcbHLH075	Chr5	24722566	24729289	57.68	6.61	51.95	524	-0.53
Ccam05G002154	CcbHLH076	Chr5	50150767	50152137	19.81	8.91	57.92	174	-0.265
Ccam05G002171	CcbHLH077	Chr5	50400806	50403312	40.37	5.96	47.02	361	-0.594
Ccam05G002316	CcbHLH078	Chr5	52967352	52968339	32.4	4.53	56.33	291	-0.352
Ccam05G002354	CcbHLH079	Chr5	53433377	53440681	74.18	8.95	61.36	666	-0.592
Ccam06G000067	CcbHLH080	Chr6	1026820	1030288	58.66	6.01	47.21	545	-0.59
Ccam06G000318	CcbHLH081	Chr6	4585577	4588891	38.82	6.77	60.27	349	-0.67
Ccam06G000343	CcbHLH082	Chr6	4990171	4995709	56.04	5.13	58.04	510	-0.545
Ccam06G000478	CcbHLH083	Chr6	7089484	7091400	70.41	5.49	49.24	638	-0.578
Ccam06G000723	CcbHLH084	Chr6	11121128	11122582	30.44	9.51	55.4	267	-0.348
Ccam06G000831	CcbHLH085	Chr6	13424666	13428677	28.22	9.3	57.99	258	-0.526
Ccam06G000990	CcbHLH086	Chr6	17311514	17312035	19.76	11.98	70.48	173	-0.639
Ccam06G001416	CcbHLH087	Chr6	36923970	36936953	57.1	9.02	63.28	502	-0.736
Ccam06G001588	CcbHLH088	Chr6	41635869	41639829	45.07	5.88	67.23	397	-0.651
Ccam06G001856	CcbHLH089	Chr6	46323071	46326641	45.71	5.95	54.2	426	-0.528

Ccam06G002000	CcbHLH090	Chr6	48263853	48265844	72.27	5.57	51.28	663	-0.459
Ccam06G002056	CcbHLH091	Chr6	49116076	49132754	136.68	5.16	49.5	1216	-0.357
Ccam07G000028	CcbHLH092	Chr7	431402	434395	39.53	6.31	48.09	361	-0.478
Ccam07G000323	CcbHLH093	Chr7	4121727	4124512	44.13	6.36	61.21	394	-0.528
Ccam07G000447	CcbHLH094	Chr7	5803846	5804952	30.68	5.83	65.81	270	-0.393
Ccam07G000451	CcbHLH095	Chr7	5895892	5898635	51.95	5.07	49.19	460	-0.634
Ccam07G000467	CcbHLH096	Chr7	6102541	6106923	28.65	6.48	52.78	252	-0.451
Ccam07G000806	CcbHLH097	Chr7	11479838	11480413	21.08	11.56	59.47	191	-0.592
Ccam07G000817	CcbHLH098	Chr7	11591427	11592415	32.07	4.52	51.56	291	-0.213
Ccam07G001012	CcbHLH099	Chr7	14652722	14654152	52.48	6.49	48.9	476	-0.44
Ccam07G001054	CcbHLH100	Chr7	15380875	15387822	33.22	6.2	45.53	309	-0.464
Ccam07G001230	CcbHLH101	Chr7	20042699	20048742	41.71	7.7	77.62	376	-0.696
Ccam07G001915	CcbHLH102	Chr7	41541957	41545734	51.87	5.2	58.1	470	-0.636
Ccam08G000150	CcbHLH103	Chr8	2021192	2023735	35.27	5.52	66.09	315	-0.397
Ccam08G000297	CcbHLH104	Chr8	4195816	4196490	24.67	9.44	68.27	224	-0.274
Ccam08G000718	CcbHLH105	Chr8	9947275	9951445	25.55	5.89	48.8	230	-0.712
Ccam08G000756	CcbHLH106	Chr8	10673989	10677802	57.11	6.08	45.46	515	-0.721
Ccam08G001312	CcbHLH107	Chr8	29828625	29832062	50.93	5.83	51.27	458	-0.607
Ccam08G001540	CcbHLH108	Chr8	38759329	38766429	50.3	9.46	64.38	471	-0.499
Ccam08G001944	CcbHLH109	Chr8	45985682	45992717	30.49	6.1	39.99	268	-0.507
Ccam09G000043	CcbHLH110	Chr9	706970	707701	10.04	5.88	74.67	87	-0.594
Ccam09G000250	CcbHLH111	Chr9	3585075	3588902	55.65	5.71	42.34	505	-0.722
Ccam09G000335	CcbHLH112	Chr9	4652432	4655289	25.29	6.65	66.18	230	-0.498
Ccam09G000592	CcbHLH113	Chr9	8580278	8580967	25.19	9.03	58.02	229	-0.357
Ccam09G000671	CcbHLH114	Chr9	9896073	9899839	25.59	8.94	62.82	237	-0.416
Ccam09G000703	CcbHLH115	Chr9	10536836	10539736	35.31	5.65	66.43	316	-0.465
Ccam09G000849	CcbHLH116	Chr9	13089738	13094994	69.72	5.8	41.12	623	-0.729
Ccam09G000924	CcbHLH117	Chr9	15046577	15062881	37.96	7.17	64.56	337	-0.73
Ccam09G001546	CcbHLH118	Chr9	35440630	35452345	71.92	5.6	59.33	637	-0.478
Ccam09G001725	CcbHLH119	Chr9	38936890	38949677	85.06	6.59	43.44	767	-0.237
Ccam09G001727	CcbHLH120	Chr9	38978854	38987346	23.93	7.63	58.35	213	-0.657
Ccam10G000132	CcbHLH121	Chr10	5335120	5337964	73.04	6.39	45.55	655	-0.475
Ccam10G000299	CcbHLH122	Chr10	10557053	10558250	34.94	5.83	71.42	317	-0.524
Ccam10G000671	CcbHLH123	Chr10	27257982	27258932	35.07	6.98	69.54	316	-0.349
Ccam10G001192	CcbHLH124	Chr10	38491382	38506471	94.85	6.42	46.69	835	-0.413
Ccam10G001273	CcbHLH125	Chr10	39898384	39904911	38.25	7.67	56.42	330	-0.352
Ccam10G001274	CcbHLH126	Chr10	39913908	39915861	19.82	8.88	52.59	175	-0.549
Ccam10G001275	CcbHLH127	Chr10	39934360	39935396	20.05	6.32	52.68	179	-0.234
Ccam10G001276	CcbHLH128	Chr10	39958796	39960585	19.86	8.89	46.94	176	-0.407
Ccam10G001702	CcbHLH129	Chr10	46143234	46143767	19.98	11.5	69.67	177	-0.51
Ccam10G001809	CcbHLH130	Chr10	47900999	47907411	77.19	6.99	61.32	717	-0.569
Ccam11G000202	CcbHLH131	Chr11	3196939	3210105	36.36	8.62	57.01	340	-0.298
Ccam11G000280	CcbHLH132	Chr11	4276260	4287243	29.23	6.25	57.54	261	-0.333
Ccam11G000711	CcbHLH133	Chr11	10293608	10294685	30.84	7.8	63.38	279	-0.661
Ccam11G000722	CcbHLH134	Chr11	10485433	10499537	79.31	5.19	61.61	709	-0.553
Ccam11G000731	CcbHLH135	Chr11	10601999	10610427	31.01	6.45	43.83	288	-0.246
Ccam11G000873	CcbHLH136	Chr11	12886573	12887142	21.07	11.68	69.85	189	-0.539
Ccam11G000993	CcbHLH137	Chr11	15174399	15181628	75.55	5.38	62.2	694	-0.537

Ccam11G001086	<i>CcbHLH138</i>	Chr11	17412365	17420289	17.15	8.49	69.89	154	-0.356
Ccam11G001256	<i>CcbHLH139</i>	Chr11	23687415	23696231	58.36	5.65	49.58	537	-0.516
Ccam11G001278	<i>CcbHLH140</i>	Chr11	24739058	24757487	49.24	6.5	52.07	438	-0.774
Ccam11G001488	<i>CcbHLH141</i>	Chr11	32381697	32385249	30.65	7.01	47.24	271	-0.672
Ccam11G001570	<i>CcbHLH142</i>	Chr11	34521875	34525282	38.92	5.14	62.96	345	-0.429
Ccam11G001635	<i>CcbHLH143</i>	Chr11	35920277	35921258	20.69	9.21	40.32	188	-0.188
Ccam12G000639	<i>CcbHLH144</i>	Chr12	25049881	25055267	16.09	9.12	46.58	144	-0.394
Ccam12G001023	<i>CcbHLH145</i>	Chr12	31336613	31338433	67.49	6.61	50.83	606	-0.626
Ccam12G001109	<i>CcbHLH146</i>	Chr12	32507942	32511726	27.45	9.22	48.55	253	-0.287
Ccam12G001241	<i>CcbHLH147</i>	Chr12	34739168	34744112	22.07	5.77	42.79	191	-0.512
Ccam12G001317	<i>CcbHLH148</i>	Chr12	35723320	35729368	38.85	6.22	38.14	355	-0.385
Ccam12G001327	<i>CcbHLH149</i>	Chr12	35840899	35841549	23.75	10.76	61.57	216	-0.854
Ccam12G001429	<i>CcbHLH150</i>	Chr12	37399389	37407382	58.97	6.45	68.6	543	-0.641

---



**Table S2.** *Ka/Ks* analysis for the *CcbHLH* duplicated genes

<b>Gene 1</b>	<b>Gene 2</b>	<b><i>Ka</i></b>	<b><i>Ks</i></b>	<b><i>Ka/Ks</i></b>
<i>CcbHLH006</i>	<i>CcbHLH012</i>	0.23500594	0.56723065	0.41430402
<i>CcbHLH002</i>	<i>CcbHLH009</i>	0.09650949	0.53162888	0.18153545
<i>CcbHLH012</i>	<i>CcbHLH028</i>	0.23161595	0.90192113	0.25680288
<i>CcbHLH005</i>	<i>CcbHLH027</i>	0.22687007	1.21865652	0.18616408
<i>CcbHLH006</i>	<i>CcbHLH028</i>	0.2912156	1.03800312	0.28055368
<i>CcbHLH004</i>	<i>CcbHLH036</i>	0.43123806	1.09600964	0.39346192
<i>CcbHLH013</i>	<i>CcbHLH033</i>	0.15423131	1.00849939	0.15293149
<i>CcbHLH014</i>	<i>CcbHLH031</i>	0.20814526	0.99791194	0.20858079
<i>CcbHLH009</i>	<i>CcbHLH030</i>	0.16915638	0.99205835	0.17051052
<i>CcbHLH010</i>	<i>CcbHLH029</i>	0.38297336	1.77625963	0.21560663
<i>CcbHLH015</i>	<i>CcbHLH041</i>	0.14582277	0.66203978	0.22026285
<i>CcbHLH013</i>	<i>CcbHLH055</i>	0.2576983	1.09422297	0.23550803
<i>CcbHLH014</i>	<i>CcbHLH056</i>	0.26705575	0.92543063	0.28857458
<i>CcbHLH010</i>	<i>CcbHLH057</i>	0.33811513	2.40143596	0.14079706
<i>CcbHLH012</i>	<i>CcbHLH058</i>	0.28996781	1.00308454	0.28907614
<i>CcbHLH004</i>	<i>CcbHLH060</i>	0.49692138	1.49153868	0.33316023
<i>CcbHLH005</i>	<i>CcbHLH059</i>	0.20790203	1.09573195	0.18973803
<i>CcbHLH006</i>	<i>CcbHLH058</i>	0.37377526	0.98921461	0.37785052
<i>CcbHLH015</i>	<i>CcbHLH080</i>	0.2881872	1.1969836	0.2407612
<i>CcbHLH124</i>	<i>CcbHLH141</i>	0.19307342	0.56219989	0.34342487
<i>CcbHLH130</i>	<i>CcbHLH137</i>	0.34339487	0.86978599	0.39480386
<i>CcbHLH121</i>	<i>CcbHLH145</i>	0.22246819	1.54343184	0.14413865
<i>CcbHLH129</i>	<i>CcbHLH020</i>	0.55057496	0.97843313	0.56271087
<i>CcbHLH124</i>	<i>CcbHLH065</i>	0.3193442	0.93567611	0.3412978
<i>CcbHLH125</i>	<i>CcbHLH076</i>	0.35316091	1.02480974	0.34461119
<i>CcbHLH136</i>	<i>CcbHLH020</i>	0.31479403	0.60833056	0.51747201
<i>CcbHLH133</i>	<i>CcbHLH023</i>	0.13870709	1.19265491	0.11630111
<i>CcbHLH134</i>	<i>CcbHLH022</i>	0.13480412	0.73825633	0.18259798
<i>CcbHLH142</i>	<i>CcbHLH021</i>	0.39343451	NaN	NaN
<i>CcbHLH147</i>	<i>CcbHLH048</i>	0.2723147	0.66388264	0.410185
<i>CcbHLH144</i>	<i>CcbHLH049</i>	0.11342323	0.33214852	0.34148346
<i>CcbHLH146</i>	<i>CcbHLH085</i>	0.20134274	0.84434473	0.23846035
<i>CcbHLH149</i>	<i>CcbHLH097</i>	0.25639202	1.081268	0.23712162
<i>CcbHLH036</i>	<i>CcbHLH060</i>	0.28441144	0.78938396	0.36029544
<i>CcbHLH018</i>	<i>CcbHLH061</i>	0.0946908	0.92676891	0.10217304
<i>CcbHLH035</i>	<i>CcbHLH062</i>	0.2844935	1.0391253	0.27378171
<i>CcbHLH028</i>	<i>CcbHLH058</i>	0.19332767	0.5454234	0.35445431
<i>CcbHLH029</i>	<i>CcbHLH057</i>	0.24306257	1.06282946	0.22869386
<i>CcbHLH031</i>	<i>CcbHLH056</i>	0.14505191	0.60707306	0.2389365
<i>CcbHLH033</i>	<i>CcbHLH055</i>	0.17399405	0.52762175	0.32977042
<i>CcbHLH035</i>	<i>CcbHLH054</i>	0.21162088	0.5236623	0.40411709
<i>CcbHLH027</i>	<i>CcbHLH059</i>	0.10967151	0.65211763	0.16817749
<i>CcbHLH025</i>	<i>CcbHLH075</i>	0.25656472	1.28565633	0.19955933
<i>CcbHLH019</i>	<i>CcbHLH108</i>	0.22802884	1.25993903	0.18098402
<i>CcbHLH018</i>	<i>CcbHLH109</i>	0.1809742	1.48210876	0.12210589

<i>CcbHLH046</i>	<i>CcbHLH091</i>	0.27897029	0.59128009	0.47180735
<i>CcbHLH041</i>	<i>CcbHLH080</i>	0.31119593	1.35568182	0.22954939
<i>CcbHLH042</i>	<i>CcbHLH089</i>	0.22552335	1.01431536	0.22234047
<i>CcbHLH043</i>	<i>CcbHLH087</i>	0.31231048	0.60175985	0.51899521
<i>CcbHLH045</i>	<i>CcbHLH083</i>	0.24097958	1.86002761	0.12955699
<i>CcbHLH043</i>	<i>CcbHLH084</i>	0.38745744	1.3295763	0.29141422
<i>CcbHLH043</i>	<i>CcbHLH094</i>	0.40882631	1.29716464	0.31516917
<i>CcbHLH042</i>	<i>CcbHLH092</i>	0.37206841	1.07957782	0.34464251
<i>CcbHLH054</i>	<i>CcbHLH062</i>	0.3124337	1.12521329	0.27766621
<i>CcbHLH066</i>	<i>CcbHLH076</i>	0.43918893	1.02554581	0.42824896
<i>CcbHLH061</i>	<i>CcbHLH109</i>	0.19268281	1.21905132	0.15805964
<i>CcbHLH079</i>	<i>CcbHLH101</i>	0.2689257	0.87679004	0.30671619
<i>CcbHLH070</i>	<i>CcbHLH112</i>	0.23062034	0.99176992	0.23253412
<i>CcbHLH084</i>	<i>CcbHLH087</i>	0.40971009	1.55493882	0.26348952
<i>CcbHLH083</i>	<i>CcbHLH090</i>	0.19559434	2.25026251	0.08692068
<i>CcbHLH089</i>	<i>CcbHLH097</i>	0.32556689	1.18533778	0.2746617
<i>CcbHLH086</i>	<i>CcbHLH097</i>	0.22386974	0.91366332	0.24502433
<i>CcbHLH084</i>	<i>CcbHLH094</i>	0.20458273	0.83138502	0.24607459
<i>CcbHLH088</i>	<i>CcbHLH093</i>	0.23119709	1.19762384	0.1930465
<i>CcbHLH087</i>	<i>CcbHLH094</i>	0.44120148	1.24104851	0.35550704
<i>CcbHLH103</i>	<i>CcbHLH115</i>	0.19215012	1.16337865	0.16516559
<i>CcbHLH106</i>	<i>CcbHLH111</i>	0.2237209	0.93037417	0.24046336
<i>CcbHLH104</i>	<i>CcbHLH113</i>	0.17660531	1.28236727	0.1377182

---



**Table S3.** *Ka/Ks* analysis for the *CcbHLH* and *Arabidopsis* homologous genes

<b>Cc-Gene</b>	<b>At-Gene</b>	<b><i>Ka</i></b>	<b><i>Ks</i></b>	<b><i>Ka/Ks</i></b>
<i>CcbHLH001</i>	<i>AT1G63650.3</i>	0.391063	NaN	NaN
<i>CcbHLH002</i>	<i>AT1G51140.1</i>	0.563993	1.832166	0.307829
<i>CcbHLH003</i>	<i>AT1G51140.1</i>	0.540895	3.011273	0.179623
<i>CcbHLH006</i>	<i>AT1G09530.1</i>	0.517115	1.834967	0.281812
<i>CcbHLH006</i>	<i>AT1G09250.1</i>	0.541174	2.140016	0.252883
<i>CcbHLH009</i>	<i>AT1G09530.1</i>	0.549182	NaN	NaN
<i>CcbHLH011</i>	<i>AT1G51140.1</i>	0.535489	NaN	NaN
<i>CcbHLH011</i>	<i>AT1G27740.1</i>	0.542542	NaN	NaN
<i>CcbHLH012</i>	<i>AT1G30670.1</i>	0.589955	NaN	NaN
<i>CcbHLH012</i>	<i>AT1G68920.4</i>	0.429324	2.441618	0.175836
<i>CcbHLH013</i>	<i>AT1G69010.1</i>	0.372544	3.1349	0.118838
<i>CcbHLH013</i>	<i>AT1G12860.1</i>	0.256552	NaN	NaN
<i>CcbHLH014</i>	<i>AT1G22490.2</i>	0.42085	NaN	NaN
<i>CcbHLH015</i>	<i>AT1G22490.2</i>	0.371546	NaN	NaN
<i>CcbHLH016</i>	<i>AT2G20100.3</i>	0.325067	2.473899	0.131399
<i>CcbHLH018</i>	<i>AT2G42280.3</i>	0.431623	NaN	NaN
<i>CcbHLH018</i>	<i>AT2G42300.1</i>	0.392556	1.99918	0.196358
<i>CcbHLH019</i>	<i>AT2G20100.3</i>	0.355311	1.670253	0.212729
<i>CcbHLH020</i>	<i>AT2G22750.3</i>	0.451086	2.321151	0.194337
<i>CcbHLH021</i>	<i>AT2G42280.3</i>	0.458652	NaN	NaN
<i>CcbHLH028</i>	<i>AT2G46970.1</i>	0.650137	NaN	NaN
<i>CcbHLH031</i>	<i>AT2G22750.3</i>	0.384004	NaN	NaN
<i>CcbHLH033</i>	<i>AT2G40200.1</i>	0.57685	NaN	NaN
<i>CcbHLH033</i>	<i>AT2G18300.3</i>	0.53332	2.636851	0.202256
<i>CcbHLH035</i>	<i>AT2G42280.3</i>	0.552264	2.426988	0.227551
<i>CcbHLH038</i>	<i>AT2G22750.3</i>	0.505538	NaN	NaN
<i>CcbHLH039</i>	<i>AT2G14760.3</i>	0.510834	NaN	NaN
<i>CcbHLH041</i>	<i>AT2G46810.1</i>	0.434613	NaN	NaN
<i>CcbHLH041</i>	<i>AT2G46810.1</i>	0.457829	NaN	NaN
<i>CcbHLH044</i>	<i>AT2G24260.1</i>	0.345029	NaN	NaN
<i>CcbHLH045</i>	<i>AT3G57800.1</i>	0.412166	3.618364	0.113909
<i>CcbHLH045</i>	<i>AT3G56770.1</i>	0.391504	NaN	NaN
<i>CcbHLH047</i>	<i>AT3G07340.1</i>	0.429965	NaN	NaN
<i>CcbHLH054</i>	<i>AT3G21330.1</i>	0.410367	3.024519	0.13568
<i>CcbHLH055</i>	<i>AT3G62090.2</i>	0.711208	1.759927	0.404112
<i>CcbHLH055</i>	<i>AT3G06590.2</i>	0.484142	2.0847	0.232236
<i>CcbHLH056</i>	<i>AT3G05800.1</i>	0.501939	1.380459	0.363603
<i>CcbHLH058</i>	<i>AT3G62090.2</i>	0.668809	3.29868	0.202751
<i>CcbHLH064</i>	<i>AT3G06590.2</i>	0.44609	2.631417	0.169525
<i>CcbHLH064</i>	<i>AT3G06590.2</i>	0.797705	NaN	NaN
<i>CcbHLH064</i>	<i>AT3G06120.1</i>	0.179717	NaN	NaN
<i>CcbHLH074</i>	<i>AT3G47640.2</i>	0.475342	2.057972	0.230976
<i>CcbHLH075</i>	<i>AT3G07340.1</i>	0.422495	3.631451	0.116343
<i>CcbHLH078</i>	<i>AT3G07340.1</i>	0.467619	3.647439	0.128205
<i>CcbHLH080</i>	<i>AT3G19860.2</i>	0.587352	NaN	NaN

<i>CcbHLH081</i>	<i>AT3G23210.1</i>	0.35224	NaN	NaN
<i>CcbHLH082</i>	<i>AT4G37850.2</i>	0.437359	4.531136	0.096523
<i>CcbHLH083</i>	<i>AT4G30980.2</i>	0.360209	1.577439	0.22835
<i>CcbHLH083</i>	<i>AT4G37850.2</i>	0.403583	NaN	NaN
<i>CcbHLH088</i>	<i>AT4G29930.3</i>	0.440754	1.992078	0.221253
<i>CcbHLH089</i>	<i>AT4G17880.1</i>	0.314076	NaN	NaN
<i>CcbHLH090</i>	<i>AT4G37850.2</i>	0.470054	NaN	NaN
<i>CcbHLH093</i>	<i>AT4G36540.1</i>	0.529271	NaN	NaN
<i>CcbHLH093</i>	<i>AT4G34530.1</i>	0.404877	NaN	NaN
<i>CcbHLH103</i>	<i>AT4G17880.1</i>	0.287119	NaN	NaN
<i>CcbHLH103</i>	<i>AT4G00050.1</i>	0.33448	NaN	NaN
<i>CcbHLH105</i>	<i>AT4G01460.1</i>	0.425626	NaN	NaN
<i>CcbHLH108</i>	<i>AT4G29930.3</i>	0.387341	NaN	NaN
<i>CcbHLH108</i>	<i>AT4G30980.2</i>	0.438548	2.920475	0.150163
<i>CcbHLH108</i>	<i>AT4G36060.3</i>	0.454389	2.203012	0.206258
<i>CcbHLH109</i>	<i>AT5G65640.1</i>	0.377721	NaN	NaN
<i>CcbHLH109</i>	<i>AT5G53210.1</i>	0.36693	NaN	NaN
<i>CcbHLH115</i>	<i>AT5G65640.1</i>	0.351049	NaN	NaN
<i>CcbHLH115</i>	<i>AT5G57150.4</i>	0.292013	NaN	NaN
<i>CcbHLH117</i>	<i>AT5G46690.1</i>	0.464377	NaN	NaN
<i>CcbHLH120</i>	<i>AT5G46760.1</i>	0.349691	NaN	NaN
<i>CcbHLH122</i>	<i>AT5G48560.1</i>	0.462513	NaN	NaN
<i>CcbHLH129</i>	<i>AT5G01305.1</i>	0.47317	2.202158	0.214866
<i>CcbHLH129</i>	<i>AT5G65640.1</i>	0.395514	NaN	NaN
<i>CcbHLH130</i>	<i>AT5G50915.2</i>	0.418551	2.172984	0.192616
<i>CcbHLH130</i>	<i>AT5G46760.1</i>	0.381627	NaN	NaN
<i>CcbHLH136</i>	<i>AT5G46760.1</i>	0.357134	NaN	NaN
<i>CcbHLH136</i>	<i>AT5G65320.1</i>	0.481187	3.750768	0.12829
<i>CcbHLH137</i>	<i>AT5G57150.4</i>	0.358213	2.6933	0.133001
<i>CcbHLH137</i>	<i>AT5G58010.1</i>	0.341824	NaN	NaN
<i>CcbHLH137</i>	<i>AT5G65320.1</i>	0.490928	NaN	NaN

---

**Table S4.** *Ka/Ks* analysis for the *CcbHLH* and *Populus trichocarpa* homologous genes

Cc-Gene	Pt-Gene	<i>Ka</i>	<i>Ks</i>	<i>Ka/Ks</i>
<i>CcbHLH001</i>	<i>PNT53769</i>	0.291132	1.621532	0.179542
<i>CcbHLH001</i>	<i>PNT45271</i>	0.298627	1.57945	0.18907
<i>CcbHLH002</i>	<i>PNT55309</i>	0.267573	1.050313	0.254755
<i>CcbHLH002</i>	<i>PNS93365</i>	0.189214	0.964579	0.196162
<i>CcbHLH002</i>	<i>PNT43742</i>	0.266849	1.013661	0.263253
<i>CcbHLH005</i>	<i>PNT09940</i>	0.283679	1.247406	0.227415
<i>CcbHLH005</i>	<i>PNT00810</i>	0.301142	1.264235	0.238201
<i>CcbHLH006</i>	<i>PNT56888</i>	0.421446	1.414877	0.297868
<i>CcbHLH006</i>	<i>PNT52177</i>	0.478165	2.150896	0.22231
<i>CcbHLH006</i>	<i>PNS97934</i>	0.426303	1.830828	0.232847
<i>CcbHLH006</i>	<i>PNT46705</i>	0.408868	1.529488	0.267323
<i>CcbHLH006</i>	<i>PNT29960</i>	0.469848	1.833703	0.256229
<i>CcbHLH006</i>	<i>PNT19953</i>	0.395673	1.229559	0.321801
<i>CcbHLH009</i>	<i>PNT55309</i>	0.238091	1.103139	0.21583
<i>CcbHLH009</i>	<i>PNS93365</i>	0.158024	1.479539	0.106806
<i>CcbHLH009</i>	<i>PNT43742</i>	0.247256	1.154567	0.214154
<i>CcbHLH011</i>	<i>PNS97943</i>	0.340029	NaN	NaN
<i>CcbHLH011</i>	<i>PNT29941</i>	0.331243	NaN	NaN
<i>CcbHLH012</i>	<i>PNT56888</i>	0.408461	1.487999	0.274504
<i>CcbHLH012</i>	<i>PNT52177</i>	0.604137	2.494412	0.242196
<i>CcbHLH012</i>	<i>PNS97934</i>	0.392812	1.962809	0.200128
<i>CcbHLH012</i>	<i>PNT46705</i>	0.428952	1.987042	0.215874
<i>CcbHLH012</i>	<i>PNT29960</i>	0.364822	1.703151	0.214204
<i>CcbHLH012</i>	<i>PNT19953</i>	0.389085	1.228614	0.316686
<i>CcbHLH013</i>	<i>PNT57202</i>	0.295426	1.443511	0.204658
<i>CcbHLH013</i>	<i>PNT20268</i>	0.30944	1.614281	0.191689
<i>CcbHLH014</i>	<i>PNT49059</i>	0.299553	1.430028	0.209473
<i>CcbHLH015</i>	<i>PNT51556</i>	0.366357	2.119312	0.172866
<i>CcbHLH017</i>	<i>PNT16275</i>	0.201451	4.75474	0.042368
<i>CcbHLH017</i>	<i>PNT24092</i>	0.204581	NaN	NaN
<i>CcbHLH018</i>	<i>PNS94332</i>	0.355049	2.206933	0.160879
<i>CcbHLH018</i>	<i>PNT30298</i>	0.379458	1.695581	0.223792
<i>CcbHLH020</i>	<i>PNT16564</i>	0.729359	NaN	NaN
<i>CcbHLH020</i>	<i>PNT06006</i>	0.673065	2.103191	0.320021
<i>CcbHLH020</i>	<i>PNT23859</i>	0.636333	NaN	NaN
<i>CcbHLH021</i>	<i>PNT34804</i>	0.549917	NaN	NaN
<i>CcbHLH021</i>	<i>PNT25815</i>	0.0763	1.246864	0.061193
<i>CcbHLH022</i>	<i>PNT47962</i>	0.273473	NaN	NaN
<i>CcbHLH022</i>	<i>PNT37824</i>	0.261348	NaN	NaN
<i>CcbHLH024</i>	<i>PNT22856</i>	0.526702	1.904001	0.276629
<i>CcbHLH025</i>	<i>PNT16364</i>	0.281808	1.313722	0.214511
<i>CcbHLH025</i>	<i>PNT24052</i>	0.310445	1.369726	0.226648
<i>CcbHLH026</i>	<i>PNT02672</i>	0.504749	NaN	NaN
<i>CcbHLH026</i>	<i>PNT49342</i>	0.513808	1.993562	0.257733
<i>CcbHLH026</i>	<i>PNT36648</i>	0.664318	2.41816	0.27472

CcbHLH027	PNT00810	0.285788	1.407075	0.203108
CcbHLH028	PNT56888	0.337779	2.558617	0.132016
CcbHLH028	PNT52177	0.530757	1.559457	0.340347
CcbHLH028	PNS97934	0.375131	1.78794	0.209812
CcbHLH028	PNT46705	0.369289	1.795749	0.205646
CcbHLH028	PNT29960	0.340489	1.700201	0.200264
CcbHLH028	PNT19953	0.309033	2.183737	0.141515
CcbHLH031	PNT49059	0.233542	1.561492	0.149563
CcbHLH031	PNT26394	0.756511	5.746851	0.131639
CcbHLH033	PNT57202	0.273492	1.254739	0.217968
CcbHLH033	PNT26361	0.342218	1.71538	0.1995
CcbHLH033	PNT20268	0.277505	1.873849	0.148093
CcbHLH034	PNT57214	0.196616	1.561241	0.125935
CcbHLH034	PNT49193	0.39682	1.550069	0.256001
CcbHLH035	PNT02498	0.465504	3.001594	0.155086
CcbHLH035	PNT49259	0.392786	2.130418	0.184371
CcbHLH035	PNT20403	0.384496	2.031636	0.189255
CcbHLH036	PNT31782	0.581434	2.336778	0.248819
CcbHLH039	PNT17336	0.386039	1.81905	0.21222
CcbHLH039	PNT23239	0.372316	1.631823	0.228159
CcbHLH041	PNT51556	0.32612	NaN	NaN
CcbHLH042	PNT49677	0.316156	1.437056	0.220002
CcbHLH043	PNT54427	0.288898	1.581717	0.182648
CcbHLH043	PNT44582	0.305508	1.515289	0.201617
CcbHLH045	PNT54440	0.297376	NaN	NaN
CcbHLH045	PNT44564	0.280744	NaN	NaN
CcbHLH047	PNS99213	0.333148	2.305331	0.144512
CcbHLH047	PNT30843	0.370876	NaN	NaN
CcbHLH054	PNT02498	0.481968	1.383972	0.34825
CcbHLH054	PNT49259	0.40181	1.356559	0.296198
CcbHLH054	PNT20403	0.371006	1.733931	0.213968
CcbHLH055	PNT57202	0.372709	1.405243	0.265227
CcbHLH055	PNT26361	0.416299	1.928535	0.215863
CcbHLH055	PNT20268	0.346796	1.56578	0.221485
CcbHLH058	PNT52177	0.573407	1.797265	0.319044
CcbHLH058	PNT56888	0.426624	2.287698	0.186486
CcbHLH058	PNS97934	0.409233	1.575818	0.259696
CcbHLH058	PNT46705	0.438571	1.547275	0.283448
CcbHLH058	PNT29960	0.407239	1.674664	0.243176
CcbHLH058	PNT19953	0.394876	2.36183	0.167191
CcbHLH061	PNS94332	0.364544	4.291871	0.084938
CcbHLH061	PNT30298	0.391948	2.293331	0.170908
CcbHLH062	PNT02498	0.463298	1.462624	0.316758
CcbHLH062	PNT49259	0.36966	2.27129	0.162753
CcbHLH062	PNT20403	0.340054	1.470811	0.231202
CcbHLH063	PNT47564	0.343917	1.663355	0.206761
CcbHLH063	PNT36309	0.336662	1.527661	0.220377

CcbHLH063	PNT38258	0.319741	1.878868	0.170178
CcbHLH063	PNT26639	0.458812	1.938151	0.236727
CcbHLH064	PNT41429	0.346664	1.456129	0.238072
CcbHLH064	PNT36348	0.32111	1.546873	0.207587
CcbHLH064	PNT26709	0.454677	1.583315	0.287168
CcbHLH064	PNT20883	0.31226	1.680372	0.185828
CcbHLH065	PNT09623	0.346873	1.64448	0.210932
CcbHLH065	PNT00400	0.359286	2.251147	0.159601
CcbHLH065	PNS96429	0.505078	1.818061	0.277812
CcbHLH065	PNT40462	0.490764	2.091415	0.234656
CcbHLH074	PNT16382	0.367149	NaN	NaN
CcbHLH074	PNT40695	0.402756	1.558423	0.258438
CcbHLH075	PNT16364	0.346725	1.937165	0.178986
CcbHLH076	PNT10047	0.285073	2.639913	0.107986
CcbHLH076	PNT00928	0.326322	NaN	NaN
CcbHLH078	PNT60249	0.431184	1.540725	0.279858
CcbHLH078	PNT13723	0.430087	1.261472	0.340941
CcbHLH080	PNT04964	0.411464	1.828059	0.225082
CcbHLH080	PNT51292	0.392598	1.879378	0.208898
CcbHLH080	PNT51556	0.416479	2.530465	0.164586
CcbHLH081	PNT53008	0.569579	1.830694	0.311128
CcbHLH083	PNT44564	0.280272	NaN	NaN
CcbHLH085	PNT12114	0.292079	1.270827	0.229834
CcbHLH085	PNT07935	0.425225	2.004636	0.212121
CcbHLH085	PNS91223	0.416102	1.9122	0.217604
CcbHLH085	PNT39723	0.297454	1.405221	0.211678
CcbHLH088	PNT04113	0.356634	3.436573	0.103776
CcbHLH088	PNT50311	0.373621	2.223603	0.168025
CcbHLH089	PNT49677	0.284822	3.771937	0.075511
CcbHLH090	PNT54440	0.254681	NaN	NaN
CcbHLH090	PNT44564	0.239404	NaN	NaN
CcbHLH092	PNT49677	0.512568	2.131443	0.240479
CcbHLH096	PNT15303	0.462251	2.509113	0.184229
CcbHLH096	PNT24984	0.464114	2.146349	0.216234
CcbHLH097	PNT37670	0.765459	3.029412	0.252676
CcbHLH099	PNT53400	0.379131	NaN	NaN
CcbHLH099	PNT04055	0.3542	NaN	NaN
CcbHLH099	PNT47736	0.656523	NaN	NaN
CcbHLH099	PNT50251	0.323136	NaN	NaN
CcbHLH099	PNT45651	0.394096	NaN	NaN
CcbHLH099	PNT38069	0.740982	NaN	NaN
CcbHLH100	PNT06622	0.258731	1.341272	0.1929
CcbHLH100	PNT47794	0.157252	2.624879	0.059908
CcbHLH100	PNT38012	0.152738	2.765409	0.055232
CcbHLH100	PNT35057	0.248621	1.653657	0.150346
CcbHLH102	PNT59457	0.358156	1.842865	0.194347
CcbHLH102	PNT11611	0.361728	1.853335	0.195177
CcbHLH102	PNT39271	0.335374	1.696584	0.197676

CcbHLH103	PNT48909	0.286953	2.456462	0.116816
CcbHLH103	PNT35341	0.297648	NaN	NaN
CcbHLH103	PNT28057	0.28943	NaN	NaN
CcbHLH104	PNT02692	0.241599	3.204816	0.075386
CcbHLH104	PNT49349	0.256411	3.303208	0.077625
CcbHLH104	PNT36639	0.273252	2.154249	0.126843
CcbHLH104	PNT27082	0.260134	2.100099	0.123867
CcbHLH106	PNT15681	0.303597	1.60971	0.188604
CcbHLH106	PNT24596	0.34729	1.938602	0.179145
CcbHLH107	PNT13196	0.349335	1.448914	0.241101
CcbHLH109	PNS94332	0.41992	1.890988	0.222064
CcbHLH109	PNT30298	0.409524	2.910811	0.140691
CcbHLH111	PNT15681	0.292687	1.49114	0.196284
CcbHLH111	PNT24596	0.334365	1.945434	0.171871
CcbHLH112	PNT35165	0.306788	NaN	NaN
CcbHLH112	PNT28262	0.356424	NaN	NaN
CcbHLH113	PNT02692	0.235671	4.031459	0.058458
CcbHLH113	PNT49349	0.297668	2.632732	0.113064
CcbHLH113	PNT36639	0.317295	1.609263	0.197168
CcbHLH113	PNT27082	0.307349	1.774405	0.173212
CcbHLH114	PNT48979	0.388233	2.371136	0.163733
CcbHLH115	PNT48909	0.283384	2.215878	0.127888
CcbHLH115	PNT35341	0.344137	2.40309	0.143206
CcbHLH115	PNT28057	0.339934	2.542961	0.133676
CcbHLH117	PNT41649	0.331784	1.774579	0.186965
CcbHLH117	PNT36201	0.294478	1.608966	0.183023
CcbHLH117	PNT21113	0.308071	1.877675	0.16407
CcbHLH118	PNT03691	0.405633	1.786786	0.227018
CcbHLH118	PNT45271	0.40374	1.659502	0.24329
CcbHLH119	PNT47713	0.443658	1.830656	0.242349
CcbHLH119	PNT38088	0.450932	1.338625	0.336862
CcbHLH120	PNT15223	0.313551	1.766865	0.177462
CcbHLH120	PNT25060	0.232143	1.597051	0.145357
CcbHLH121	PNT03984	0.334791	2.059049	0.162595
CcbHLH121	PNT50177	0.326443	NaN	NaN
CcbHLH122	PNT09201	0.233521	2.72777	0.085609
CcbHLH122	PNT00002	0.247502	NaN	NaN
CcbHLH124	PNT09623	0.350889	1.355321	0.258898
CcbHLH124	PNT00400	0.340647	1.621677	0.210059
CcbHLH124	PNS96429	0.381108	1.317788	0.289203
CcbHLH124	PNT40462	0.374151	1.465643	0.255281
CcbHLH125	PNT10047	0.474139	2.309576	0.205293
CcbHLH125	PNT00928	0.424055	NaN	NaN
CcbHLH129	PNT16564	0.508245	4.104833	0.123816
CcbHLH129	PNT06006	0.419297	1.730876	0.242245
CcbHLH129	PNT34390	0.434215	2.206879	0.196755
CcbHLH129	PNT23859	0.454284	NaN	NaN

<i>CcbHLH130</i>	<i>PNT04213</i>	0.624485	1.93177	0.323271
<i>CcbHLH131</i>	<i>PNT31521</i>	0.37743	1.870803	0.201748
<i>CcbHLH136</i>	<i>PNT16564</i>	0.414036	3.929545	0.105365
<i>CcbHLH136</i>	<i>PNT50574</i>	0.916448	NaN	NaN
<i>CcbHLH136</i>	<i>PNT34390</i>	0.375408	1.751747	0.214305
<i>CcbHLH136</i>	<i>PNT23859</i>	0.395698	2.8209	0.140274
<i>CcbHLH137</i>	<i>PNT05883</i>	0.490734	1.40722	0.348726
<i>CcbHLH137</i>	<i>PNT04213</i>	0.594475	1.589967	0.373891
<i>CcbHLH137</i>	<i>PNT34242</i>	0.465996	1.446159	0.32223
<i>CcbHLH144</i>	<i>PNT08075</i>	0.331652	1.406553	0.235791
<i>CcbHLH145</i>	<i>PNT03984</i>	0.240688	1.855189	0.129738
<i>CcbHLH145</i>	<i>PNT50177</i>	0.252087	3.717722	0.067807
<i>CcbHLH146</i>	<i>PNT12114</i>	0.281933	1.235431	0.228206
<i>CcbHLH146</i>	<i>PNS91223</i>	0.390369	1.402608	0.278317
<i>CcbHLH146</i>	<i>PNT39723</i>	0.336278	1.131326	0.297242
<i>CcbHLH150</i>	<i>PNT51632</i>	0.347751	2.106323	0.165099

---



**Table S5.** *Ka/Ks analysis for the CcbHLH and C. kanehirae* homologous genes

Cc-Gene	At-Gene	Ka	Ks	Ka/Ks
<i>CcbHLH001</i>	CKAN_00040200	0.005705	0.038992	0.14631
<i>CcbHLH002</i>	CKAN_00069300	0.005072	0.02249	0.225512
<i>CcbHLH003</i>	CKAN_00079900	0.018835	0.036623	0.514289
<i>CcbHLH004</i>	CKAN_00083300	0.01367	0.009783	1.397346
<i>CcbHLH005</i>	CKAN_00086200	0.06516	0.105861	0.61553
<i>CcbHLH006</i>	CKAN_00093200	0.004264	0.019085	0.223443
<i>CcbHLH007</i>	CKAN_00123100	0.011962	0.015847	0.754836
<i>CcbHLH009</i>	CKAN_00172600	0.001403	0.028666	0.048927
<i>CcbHLH010</i>	CKAN_00174500	0.069818	0.06544	1.066892
<i>CcbHLH011</i>	CKAN_00209700	0.009267	0.038668	0.239641
<i>CcbHLH012</i>	CKAN_00210400	0.007278	0.009788	0.743589
<i>CcbHLH013</i>	CKAN_00235600	0.003876	0.017367	0.223164
<i>CcbHLH014</i>	CKAN_00238300	0.001273	0.013647	0.093286
<i>CcbHLH015</i>	CKAN_00297600	0.004631	0.025937	0.178528
<i>CcbHLH016</i>	CKAN_00313300	0.01326	0.044685	0.296743
<i>CcbHLH017</i>	CKAN_00336300	0.001297	0.020409	0.06355
<i>CcbHLH012</i>	CKAN_00093200	0.236947	0.513005	0.46188
<i>CcbHLH006</i>	CKAN_00210400	0.237585	0.526228	0.451487
<i>CcbHLH002</i>	CKAN_00172600	0.094914	0.493676	0.19226
<i>CcbHLH008</i>	CKAN_00152700	0.013472	0.035373	0.380839
<i>CcbHLH012</i>	CKAN_00628900	0.232751	0.880167	0.26444
<i>CcbHLH005</i>	CKAN_00615000	0.211236	1.2797	0.165067
<i>CcbHLH006</i>	CKAN_00628900	0.289126	0.989126	0.292305
<i>CcbHLH013</i>	CKAN_00640400	0.154198	1.025908	0.150304
<i>CcbHLH014</i>	CKAN_00639100	0.206316	0.983611	0.209753
<i>CcbHLH004</i>	CKAN_00657400	0.418242	1.208188	0.346173
<i>CcbHLH010</i>	CKAN_00635900	0.370651	1.519535	0.243924
<i>CcbHLH015</i>	CKAN_00851700	0.153363	0.652913	0.23489
<i>CcbHLH012</i>	CKAN_01157500	0.27568	1.005723	0.274111
<i>CcbHLH005</i>	CKAN_01152000	0.21399	1.186284	0.180387
<i>CcbHLH006</i>	CKAN_01157500	0.371884	1.010547	0.368002
<i>CcbHLH013</i>	CKAN_01163500	0.20416	0.997132	0.204748
<i>CcbHLH014</i>	CKAN_01163000	0.270309	0.908778	0.297442
<i>CcbHLH010</i>	CKAN_01161300	0.342339	2.4434	0.140108
<i>CcbHLH015</i>	CKAN_01610300	0.289853	1.224251	0.23676
<i>CcbHLH001</i>	CKAN_02091900	0.243859	0.912859	0.267137
<i>CcbHLH129</i>	CKAN_00486600	0.355557	0.926623	0.383713
<i>CcbHLH124</i>	CKAN_01094000	0.313592	0.945418	0.331696
<i>CcbHLH126</i>	CKAN_01446500	0.297966	0.869566	0.342661
<i>CcbHLH124</i>	CKAN_02314600	0.038262	0.079585	0.480769

CcbHLH125	CKAN_02323400	0.252058	0.459542	0.548498
CcbHLH129	CKAN_02361800	0.002533	0.045641	0.055492
CcbHLH130	CKAN_02372300	0.004829	0.024959	0.193458
CcbHLH123	CKAN_02276000	0.009947	0.060837	0.163501
CcbHLH121	CKAN_02255000	0.01791	0.041115	0.435617
CcbHLH122	CKAN_02242100	0.008303	0.027234	0.304859
CcbHLH124	CKAN_02413200	0.191015	0.538584	0.354662
CcbHLH121	CKAN_02582300	0.221462	1.565148	0.141496
CcbHLH136	CKAN_00486600	0.201376	0.537351	0.374758
CcbHLH133	CKAN_00514000	0.130461	1.335488	0.097688
CcbHLH134	CKAN_00511800	0.135023	0.75243	0.17945
CcbHLH142	CKAN_00510700	0.380008	NaN	NaN
CcbHLH141	CKAN_02314700	0.19675	0.529168	0.37181
CcbHLH131	CKAN_02520600	0.059031	0.103492	0.570396
CcbHLH132	CKAN_02513000	0.01326	0.035232	0.376368
CcbHLH133	CKAN_02472300	0.003183	0.034546	0.09214
CcbHLH134	CKAN_02471500	0.010231	0.028222	0.362517
CcbHLH135	CKAN_02470600	0.013687	0.020229	0.676603
CcbHLH136	CKAN_02457600	0.004965	0.042615	0.116505
CcbHLH137	CKAN_02447100	0.030267	0.033274	0.909613
CcbHLH139	CKAN_02430000	0.015287	0.028677	0.533075
CcbHLH140	CKAN_02428500	0.083907	0.149307	0.561978
CcbHLH141	CKAN_02413200	0.007863	0.035353	0.222409
CcbHLH142	CKAN_02405400	0.002505	0.034801	0.071979
CcbHLH144	CKAN_01263000	0.113423	0.332149	0.341483
CcbHLH146	CKAN_01538500	0.180344	0.831961	0.21677
CcbHLH149	CKAN_01813000	0.251195	1.063736	0.236144
CcbHLH145	CKAN_02255000	0.228829	1.624656	0.140848
CcbHLH144	CKAN_02621200	0.016539	0.020409	0.810347
CcbHLH145	CKAN_02582300	0.001432	0.021749	0.065832
CcbHLH146	CKAN_02573200	0.013522	0.048354	0.279654
CcbHLH148	CKAN_02553800	0.029111	0.07446	0.390964
CcbHLH150	CKAN_02543500	0.002565	0.022286	0.115089
CcbHLH147	CKAN_02685100	0.274031	0.651972	0.420311
CcbHLH028	CKAN_00210400	0.235583	0.887033	0.265585
CcbHLH027	CKAN_00086200	0.200663	1.316786	0.152389
CcbHLH028	CKAN_00093200	0.290669	1.030825	0.281977
CcbHLH036	CKAN_00083300	0.424642	1.131448	0.375308
CcbHLH031	CKAN_00238300	0.206419	1.0341	0.199613
CcbHLH033	CKAN_00235600	0.15278	0.962703	0.158698
CcbHLH019	CKAN_00384000	0.011908	0.044579	0.267115
CcbHLH020	CKAN_00486600	0.088955	0.167251	0.531867
CcbHLH021	CKAN_00510700	0.007166	0.024933	0.287396
CcbHLH022	CKAN_00511800	0.010954	0.034282	0.319535

CcbHLH023	CKAN_00514000	0.015813	0.041657	0.379614
CcbHLH024	CKAN_00528300	0.006891	0.034924	0.197305
CcbHLH025	CKAN_00549500	0.014469	0.042322	0.341869
CcbHLH026	CKAN_00605500	0.046828	0.047088	0.994463
CcbHLH027	CKAN_00615000	0.015715	0.053334	0.294649
CcbHLH028	CKAN_00628900	0.001959	0.034351	0.057035
CcbHLH029	CKAN_00635900	0.008784	0.014693	0.597847
CcbHLH030	CKAN_00638100	0.011378	0.004323	2.632154
CcbHLH031	CKAN_00639100	0.001303	0.019049	0.068385
CcbHLH032	CKAN_00640000	0.002922	0.05452	0.053592
CcbHLH033	CKAN_00640400	0.001185	0.03304	0.035867
CcbHLH034	CKAN_00643700	0.060853	0.15026	0.404985
CcbHLH035	CKAN_00649400	0.015702	0	#NAME?
CcbHLH036	CKAN_00657400	0.008501	0.019267	0.441222
CcbHLH037	CKAN_00661800	0.01844	0.051578	0.357514
CcbHLH018	CKAN_00360900	0.001674	0	#NAME?
CcbHLH029	CKAN_00640000	0.572202	NaN	NaN
CcbHLH032	CKAN_00635900	0.605557	NaN	NaN
CcbHLH028	CKAN_01157500	0.189233	0.539707	0.350621
CcbHLH029	CKAN_01161300	0.22523	1.054793	0.21353
CcbHLH031	CKAN_01163000	0.143667	0.59202	0.242672
CcbHLH033	CKAN_01163500	0.174111	0.501592	0.347117
CcbHLH035	CKAN_01167200	0.213437	0.541122	0.394434
CcbHLH027	CKAN_01152000	0.107629	0.680555	0.158148
CcbHLH036	CKAN_01149700	0.577273	1.463614	0.394416
CcbHLH018	CKAN_01137600	0.092781	0.949391	0.097727
CcbHLH025	CKAN_01382600	0.255355	1.312404	0.19457
CcbHLH018	CKAN_02065000	0.197107	1.407793	0.140011
CcbHLH019	CKAN_02028400	0.227486	1.197159	0.190022
CcbHLH021	CKAN_02470800	0.140858	0.471001	0.299061
CcbHLH022	CKAN_02471500	0.130382	0.726845	0.17938
CcbHLH023	CKAN_02472300	0.141022	1.167334	0.120807
CcbHLH020	CKAN_02457600	0.319308	0.668907	0.477357
CcbHLH041	CKAN_00297600	0.130301	0.665314	0.19585
CcbHLH038	CKAN_00692700	0.005147	0.039895	0.129019
CcbHLH039	CKAN_00742100	0.004215	0.020113	0.209565
CcbHLH040	CKAN_00844100	0.022616	0.033491	0.675281
CcbHLH041	CKAN_00851700	0.015263	0.010268	1.486515
CcbHLH043	CKAN_00959300	0.039983	0.065873	0.606978
CcbHLH044	CKAN_00968000	0.006578	0.032895	0.199957
CcbHLH045	CKAN_00968800	0.025345	0.048016	0.527839
CcbHLH046	CKAN_00973600	0.022574	0.025457	0.886761
CcbHLH047	CKAN_01002200	0	0	NaN

CcbHLH043	CKAN_01683800	0.361091	0.728616	0.495585
CcbHLH045	CKAN_01571900	0.255622	1.727308	0.147988
CcbHLH043	CKAN_01548800	0.406237	1.383142	0.293706
CcbHLH046	CKAN_01620800	0.269822	0.580204	0.465047
CcbHLH041	CKAN_01610300	0.319489	1.40791	0.226925
CcbHLH043	CKAN_01847800	0.402001	1.299401	0.309374
CcbHLH051	CKAN_00278200	0.014097	0.054514	0.258598
CcbHLH055	CKAN_00235600	0.270347	1.02085	0.264826
CcbHLH056	CKAN_00238300	0.265179	0.925431	0.286546
CcbHLH058	CKAN_00093200	0.355491	0.94915	0.374536
CcbHLH059	CKAN_00086200	0.227377	1.165972	0.19501
CcbHLH060	CKAN_00083300	0.494321	1.538377	0.321326
CcbHLH058	CKAN_00210400	0.291649	1.012303	0.288104
CcbHLH060	CKAN_00657400	0.286115	0.780505	0.366576
CcbHLH061	CKAN_00360900	0.094691	0.926769	0.102173
CcbHLH062	CKAN_00649400	0.091712	0.736794	0.124474
CcbHLH054	CKAN_00649400	0.085124	0.427015	0.199347
CcbHLH055	CKAN_00640400	0.174708	0.557897	0.313156
CcbHLH056	CKAN_00639100	0.144982	0.576776	0.251366
CcbHLH057	CKAN_00635900	0.2384	1.019443	0.233853
CcbHLH058	CKAN_00628900	0.192513	0.498978	0.385814
CcbHLH059	CKAN_00615000	0.109085	0.613379	0.177842
CcbHLH062	CKAN_01167200	0.313305	1.171819	0.267366
CcbHLH052	CKAN_01216400	0.012862	0.010209	1.259926
CcbHLH053	CKAN_01202000	0.0263	0.037144	0.708041
CcbHLH055	CKAN_01163500	0.008355	0.02082	0.401291
CcbHLH056	CKAN_01163000	0.003944	0.019641	0.2008
CcbHLH057	CKAN_01161300	0.004445	0.027258	0.163082
CcbHLH058	CKAN_01157500	0.035265	0.039626	0.88994
CcbHLH059	CKAN_01152000	0.007901	0.054029	0.146238
CcbHLH061	CKAN_01137600	0.003301	0.012091	0.272997
CcbHLH063	CKAN_01116500	0.004192	0.013865	0.30235
CcbHLH064	CKAN_01112300	0.026598	0.047394	0.5612
CcbHLH065	CKAN_01094000	0.016096	0.02629	0.612256
CcbHLH067	CKAN_01070800	0.147698	0.277406	0.532427
CcbHLH049	CKAN_01263000	0	0.031751	0
CcbHLH051	CKAN_01238400	0.003495	0.011829	0.295466
CcbHLH067	CKAN_01446500	0.172181	0.525697	0.327529
CcbHLH061	CKAN_02065000	0.197359	1.219051	0.161896
CcbHLH065	CKAN_02314700	0.316309	0.916714	0.345047
CcbHLH049	CKAN_02621200	0.11089	0.34233	0.323926
CcbHLH048	CKAN_02685100	0.004277	0.008043	0.531714
CcbHLH075	CKAN_00549500	0.273117	1.18865	0.229771
CcbHLH076	CKAN_01070800	0.160301	0.54792	0.292562

CcbHLH076	CKAN_01446500	0.004912	0.008863	0.554232
CcbHLH078	CKAN_01464100	0.004464	0.025567	0.17459
CcbHLH079	CKAN_01466700	0.010903	0.0125	0.872242
CcbHLH070	CKAN_01298000	0.003806	0.027494	0.138424
CcbHLH074	CKAN_01381200	0.001555	0.036405	0.042726
CcbHLH075	CKAN_01382600	0.016822	0.03752	0.448343
CcbHLH079	CKAN_01773700	0.28431	0.918134	0.30966
CcbHLH070	CKAN_02204900	0.23415	0.935347	0.250335
CcbHLH076	CKAN_02323400	0.334966	0.843777	0.396983
CcbHLH082	CKAN_00138900	0.152852	0.71575	0.213555
CcbHLH082	CKAN_00278200	0.194575	1.063363	0.182981
CcbHLH091	CKAN_00973600	0.27911	0.554032	0.503781
CcbHLH080	CKAN_00851700	0.315381	1.38842	0.227151
CcbHLH087	CKAN_00959300	0.356791	0.641412	0.55626
CcbHLH089	CKAN_00929600	0.218791	0.95217	0.229781
CcbHLH083	CKAN_00968800	0.270879	1.841344	0.147109
CcbHLH084	CKAN_00959300	0.419967	1.546067	0.271636
CcbHLH090	CKAN_01571900	0.201567	2.370151	0.085044
CcbHLH083	CKAN_01626400	0.196065	2.238392	0.087592
CcbHLH080	CKAN_01610300	0.015603	0.014926	1.045343
CcbHLH081	CKAN_01588000	0.002447	0.008811	0.27773
CcbHLH082	CKAN_01585700	0.000849	0.014635	0.05799
CcbHLH083	CKAN_01571900	0.004101	0.025021	0.163907
CcbHLH084	CKAN_01548800	0.038521	0.059955	0.6425
CcbHLH085	CKAN_01538500	0.001698	0.044706	0.037977
CcbHLH086	CKAN_01524900	0.044269	0.05209	0.849842
CcbHLH087	CKAN_01683800	0.073755	0.16527	0.446272
CcbHLH088	CKAN_01666800	0.005409	0.023146	0.233688
CcbHLH089	CKAN_01640400	0.007676	0.07642	0.100445
CcbHLH090	CKAN_01626400	0.002635	0.028295	0.093118
CcbHLH091	CKAN_01620700	0.029413	0.050826	0.578707
CcbHLH087	CKAN_01548800	0.417748	1.606017	0.260114
CcbHLH084	CKAN_01683800	0.447875	1.302331	0.343903
CcbHLH084	CKAN_01847800	0.199015	0.875915	0.227209
CcbHLH088	CKAN_01859800	0.237518	1.253209	0.189528
CcbHLH087	CKAN_01847800	0.439215	1.259685	0.348671
CcbHLH089	CKAN_01887300	0.296173	1.227583	0.241265
CcbHLH085	CKAN_02573200	0.193504	0.888961	0.217675
CcbHLH094	CKAN_00959300	0.446755	1.251257	0.357045
CcbHLH092	CKAN_00929600	0.366609	1.030485	0.355763
CcbHLH101	CKAN_01466700	0.267962	0.867458	0.308905
CcbHLH094	CKAN_01548800	0.239988	0.846223	0.283599
CcbHLH093	CKAN_01666800	0.231278	1.198621	0.192953

<i>CcbHLH094</i>	CKAN_01683800	0.496511	1.237931	0.401081
<i>CcbHLH092</i>	CKAN_01640400	0.29541	1.220625	0.242015
<i>CcbHLH092</i>	CKAN_01887300	0.023351	0.037731	0.618876
<i>CcbHLH093</i>	CKAN_01859800	0.004584	0.023562	0.194535
<i>CcbHLH094</i>	CKAN_01847800	0.0032	0.022101	0.14479
<i>CcbHLH096</i>	CKAN_01845800	0.011973	0.024392	0.490845
<i>CcbHLH097</i>	CKAN_01813000	0.002374	0.013349	0.177874
<i>CcbHLH099</i>	CKAN_01794000	0.001834	0.021128	0.086791
<i>CcbHLH100</i>	CKAN_01790000	0.004336	0.01806	0.240112
<i>CcbHLH101</i>	CKAN_01773700	0.011389	0.025081	0.45408
<i>CcbHLH102</i>	CKAN_01718100	0.023189	0.073473	0.315619
<i>CcbHLH108</i>	CKAN_00384000	0.292859	1.338536	0.21879
<i>CcbHLH109</i>	CKAN_00360900	0.178678	1.482109	0.120557
<i>CcbHLH109</i>	CKAN_01137600	0.190645	1.218496	0.156459
<i>CcbHLH103</i>	CKAN_01288800	0.114829	0.638054	0.179968
<i>CcbHLH105</i>	CKAN_01347400	0.109519	0.563968	0.194193
<i>CcbHLH103</i>	CKAN_01903400	0.002757	0.023276	0.118438
<i>CcbHLH104</i>	CKAN_01917400	0.004105	0.006953	0.590486
<i>CcbHLH105</i>	CKAN_01956500	0.003746	0.006487	0.577581
<i>CcbHLH106</i>	CKAN_01959800	0.003372	0.021375	0.157761
<i>CcbHLH107</i>	CKAN_02009900	0.008532	0.006414	1.330311
<i>CcbHLH108</i>	CKAN_02028400	0.001034	0.022668	0.045629
<i>CcbHLH109</i>	CKAN_02065000	0.009475	0.01821	0.520313
<i>CcbHLH103</i>	CKAN_02168200	0.1902	1.167879	0.162859
<i>CcbHLH106</i>	CKAN_02212300	0.234394	0.888547	0.263795
<i>CcbHLH104</i>	CKAN_02178900	0.184425	1.328595	0.138812
<i>CcbHLH112</i>	CKAN_01298000	0.235369	1.046345	0.224944
<i>CcbHLH115</i>	CKAN_01288800	0.180647	1.014643	0.178041
<i>CcbHLH115</i>	CKAN_01903400	0.192819	1.15363	0.167141
<i>CcbHLH111</i>	CKAN_01959800	0.222376	0.952893	0.23337
<i>CcbHLH113</i>	CKAN_01917400	0.170995	1.309259	0.130605
<i>CcbHLH111</i>	CKAN_02212300	0.002764	0.015654	0.176589
<i>CcbHLH112</i>	CKAN_02204900	0.007521	0.019545	0.384814
<i>CcbHLH113</i>	CKAN_02178900	0.002011	0.020272	0.09919
<i>CcbHLH114</i>	CKAN_02171400	0.005622	0.035009	0.160599
<i>CcbHLH115</i>	CKAN_02168200	0.004112	0.013986	0.294029
<i>CcbHLH116</i>	CKAN_02156200	0.00755	0.03025	0.249596
<i>CcbHLH117</i>	CKAN_02150200	0.089641	0.128287	0.698757
<i>CcbHLH118</i>	CKAN_02091900	0.011999	0.010222	1.173874
<i>CcbHLH119</i>	CKAN_02081300	0.004198	0.012481	0.336333
<i>CcbHLH120</i>	CKAN_02081200	0.006048	0.043808	0.138066

**Table S6.** *CcbHLHs* protein interaction analysis

<i>Cinnamomun camphora</i> protein	<i>Cinnamomun camphora</i> protein	<i>Arabidopsis thaliana</i> protein	<i>Arabidopsis thaliana</i> protein	score
CcbHLH005	CcbHLH148	AT5G62610.1	AT1G29950.2	0.618
CcbHLH005	CcbHLH110	AT5G62610.1	AT1G31050.1	0.576
CcbHLH005	CcbHLH146	AT5G62610.1	AT1G68810.1	0.59
CcbHLH005	CcbHLH144	AT5G62610.1	AT2G31730.1	0.485
CcbHLH005	CcbHLH016	AT5G62610.1	AT2G41130.1	0.619
CcbHLH005	CcbHLH117	AT5G62610.1	AT3G19860.2	0.402
CcbHLH005	CcbHLH112	AT5G62610.1	AT3G20640.1	0.637
CcbHLH005	CcbHLH038	AT5G62610.1	AT3G47640.2	0.599
CcbHLH005	CcbHLH072	AT5G62610.1	AT4G16430.1	0.615
CcbHLH005	CcbHLH030	AT5G62610.1	AT4G29100.1	0.605
CcbHLH005	CcbHLH043	AT5G62610.1	AT5G51780.1	0.616
CcbHLH005	CcbHLH122	AT5G62610.1	AT5G53210.1	0.485
CcbHLH005	CcbHLH036	AT5G62610.1	AT5G56960.1	0.72
CcbHLH005	CcbHLH056	AT5G62610.1	AT5G65640.1	0.461
CcbHLH007	CcbHLH137	AT5G61270.1	AT1G09530.2	0.635
CcbHLH007	CcbHLH150	AT5G61270.1	AT2G20180.2	0.641
CcbHLH007	CcbHLH079	AT5G61270.1	AT2G43010.1	0.704
CcbHLH007	CcbHLH138	AT5G61270.1	AT3G06120.1	0.424
CcbHLH007	CcbHLH074	AT5G61270.1	AT5G08130.5	0.449
CcbHLH011	CcbHLH148	AT2G42300.1	AT1G29950.2	0.616
CcbHLH011	CcbHLH146	AT2G42300.1	AT1G68810.1	0.584
CcbHLH011	CcbHLH016	AT2G42300.1	AT2G41130.1	0.6
CcbHLH011	CcbHLH038	AT2G42300.1	AT3G47640.2	0.416
CcbHLH011	CcbHLH072	AT2G42300.1	AT4G16430.1	0.598
CcbHLH011	CcbHLH030	AT2G42300.1	AT4G29100.1	0.604
CcbHLH011	CcbHLH043	AT2G42300.1	AT5G51780.1	0.615
CcbHLH011	CcbHLH056	AT2G42300.1	AT5G65640.1	0.626
CcbHLH011	CcbHLH112	AT2G42300.1	AT3G20640.1	0.636
CcbHLH011	CcbHLH036	AT2G42300.1	AT5G56960.1	0.695
CcbHLH016	CcbHLH148	AT2G41130.1	AT1G29950.2	0.615
CcbHLH016	CcbHLH110	AT2G41130.1	AT1G31050.1	0.416
CcbHLH016	CcbHLH117	AT2G41130.1	AT3G19860.2	0.402
CcbHLH016	CcbHLH096	AT2G41130.1	AT5G43650.1	0.416
CcbHLH016	CcbHLH056	AT2G41130.1	AT5G65640.1	0.448
CcbHLH016	CcbHLH064	AT2G41130.1	AT4G34530.1	0.457
CcbHLH016	CcbHLH109	AT2G41130.1	AT5G57150.4	0.468
CcbHLH016	CcbHLH038	AT2G41130.1	AT3G47640.2	0.491
CcbHLH016	CcbHLH081	AT2G41130.1	AT5G50915.1	0.551
CcbHLH016	CcbHLH030	AT2G41130.1	AT4G29100.1	0.592
CcbHLH016	CcbHLH043	AT2G41130.1	AT5G51780.1	0.597
CcbHLH016	CcbHLH112	AT2G41130.1	AT3G20640.1	0.632
CcbHLH016	CcbHLH036	AT2G41130.1	AT5G56960.1	0.683



CcbHLH024	CcbHLH050	AT3G19500.1	AT1G49770.1	0.45
CcbHLH024	CcbHLH139	AT3G19500.1	AT1G68920.1	0.592
CcbHLH024	CcbHLH091	AT3G19500.1	AT2G31210.1	0.581
CcbHLH024	CcbHLH105	AT3G19500.1	AT5G54680.1	0.441
CcbHLH024	CcbHLH081	AT3G19500.1	AT5G50915.1	0.518
CcbHLH024	CcbHLH109	AT3G19500.1	AT5G57150.4	0.567
CcbHLH024	CcbHLH092	AT3G19500.1	AT4G00050.1	0.616
CcbHLH024	CcbHLH055	AT3G19500.1	AT4G37850.1	0.636
CcbHLH026	CcbHLH144	AT4G36930.1	AT2G31730.1	0.487
CcbHLH026	CcbHLH113	AT4G36930.1	AT3G50330.1	0.616
CcbHLH026	CcbHLH036	AT4G36930.1	AT5G56960.1	0.59
CcbHLH026	CcbHLH111	AT4G36930.1	AT5G09750.1	0.596
CcbHLH030	CcbHLH148	AT4G29100.1	AT1G29950.2	0.597
CcbHLH030	CcbHLH146	AT4G29100.1	AT1G68810.1	0.645
CcbHLH030	CcbHLH117	AT4G29100.1	AT3G19860.2	0.402
CcbHLH030	CcbHLH038	AT4G29100.1	AT3G47640.2	0.459
CcbHLH030	CcbHLH056	AT4G29100.1	AT5G65640.1	0.417
CcbHLH030	CcbHLH064	AT4G29100.1	AT4G34530.1	0.48
CcbHLH030	CcbHLH043	AT4G29100.1	AT5G51780.1	0.586
CcbHLH030	CcbHLH036	AT4G29100.1	AT5G56960.1	0.639
CcbHLH030	CcbHLH081	AT4G29100.1	AT5G50915.1	0.658
CcbHLH036	CcbHLH148	AT5G56960.1	AT1G29950.2	0.709
CcbHLH036	CcbHLH050	AT5G56960.1	AT1G49770.1	0.618
CcbHLH036	CcbHLH146	AT5G56960.1	AT1G68810.1	0.743
CcbHLH036	CcbHLH052	AT5G56960.1	AT2G28160.1	0.628
CcbHLH036	CcbHLH095	AT5G56960.1	AT2G31220.1	0.753
CcbHLH036	CcbHLH112	AT5G56960.1	AT3G20640.1	0.803
CcbHLH036	CcbHLH038	AT5G56960.1	AT3G47640.2	0.548
CcbHLH036	CcbHLH081	AT5G56960.1	AT5G50915.1	0.633
CcbHLH036	CcbHLH043	AT5G56960.1	AT5G51780.1	0.686
CcbHLH036	CcbHLH056	AT5G56960.1	AT5G65640.1	0.6
CcbHLH038	CcbHLH115	AT3G47640.2	AT1G22490.1	0.514
CcbHLH038	CcbHLH148	AT3G47640.2	AT1G29950.2	0.416
CcbHLH038	CcbHLH110	AT3G47640.2	AT1G31050.1	0.609
CcbHLH038	CcbHLH059	AT3G47640.2	AT1G59640.2	0.473
CcbHLH038	CcbHLH052	AT3G47640.2	AT2G28160.1	0.797
CcbHLH038	CcbHLH144	AT3G47640.2	AT2G31730.1	0.598
CcbHLH038	CcbHLH138	AT3G47640.2	AT3G06120.1	0.687
CcbHLH038	CcbHLH080	AT3G47640.2	AT3G07340.1	0.517
CcbHLH038	CcbHLH112	AT3G47640.2	AT3G20640.1	0.434
CcbHLH038	CcbHLH064	AT3G47640.2	AT4G34530.1	0.559
CcbHLH038	CcbHLH056	AT3G47640.2	AT5G65640.1	0.679
CcbHLH038	CcbHLH092	AT3G47640.2	AT4G00050.1	0.682
CcbHLH038	CcbHLH122	AT3G47640.2	AT5G53210.1	0.738
CcbHLH038	CcbHLH120	AT3G47640.2	AT4G14410.1	0.747
CcbHLH038	CcbHLH081	AT3G47640.2	AT5G50915.1	0.784

CcbHLH038	CcbHLH100	AT3G47640.2	AT4G02590.1	0.787
CcbHLH038	CcbHLH105	AT3G47640.2	AT5G54680.1	0.863
CcbHLH038	CcbHLH132	AT3G47640.2	AT3G56980.1	0.953
CcbHLH038	CcbHLH040	AT3G47640.2	AT3G56970.1	0.955
CcbHLH040	CcbHLH115	AT3G56970.1	AT1G22490.1	0.532
CcbHLH040	CcbHLH110	AT3G56970.1	AT1G31050.1	0.483
CcbHLH040	CcbHLH052	AT3G56970.1	AT2G28160.1	0.977
CcbHLH040	CcbHLH092	AT3G56970.1	AT4G00050.1	0.453
CcbHLH040	CcbHLH132	AT3G56970.1	AT3G56980.1	0.498
CcbHLH040	CcbHLH081	AT3G56970.1	AT5G50915.1	0.591
CcbHLH040	CcbHLH055	AT3G56970.1	AT4G37850.1	0.594
CcbHLH040	CcbHLH120	AT3G56970.1	AT4G14410.1	0.914
CcbHLH040	CcbHLH105	AT3G56970.1	AT5G54680.1	0.929
CcbHLH043	CcbHLH115	AT5G51780.1	AT1G22490.1	0.659
CcbHLH043	CcbHLH148	AT5G51780.1	AT1G29950.2	0.616
CcbHLH043	CcbHLH146	AT5G51780.1	AT1G68810.1	0.581
CcbHLH043	CcbHLH112	AT5G51780.1	AT3G20640.1	0.634
CcbHLH043	CcbHLH093	AT5G51780.1	AT3G61950.1	0.65
CcbHLH043	CcbHLH081	AT5G51780.1	AT5G50915.1	0.601
CcbHLH043	CcbHLH056	AT5G51780.1	AT5G65640.1	0.429
CcbHLH045	CcbHLH099	AT4G17880.1	AT1G32640.1	0.546
CcbHLH045	CcbHLH081	AT4G17880.1	AT5G50915.1	0.626
CcbHLH046	CcbHLH109	AT1G06170.2	AT5G57150.4	0.402
CcbHLH046	CcbHLH116	AT1G06170.2	AT2G16910.1	0.43
CcbHLH046	CcbHLH108	AT1G06170.2	AT2G24260.1	0.484
CcbHLH046	CcbHLH146	AT1G06170.2	AT1G68810.1	0.506
CcbHLH046	CcbHLH096	AT1G06170.2	AT5G43650.1	0.516
CcbHLH046	CcbHLH136	AT1G06170.2	AT1G09250.1	0.629
CcbHLH050	CcbHLH105	AT1G49770.1	AT5G54680.1	0.461
CcbHLH050	CcbHLH095	AT1G49770.1	AT2G31220.1	0.545
CcbHLH050	CcbHLH054	AT1G49770.1	AT4G33880.1	0.679
CcbHLH050	CcbHLH062	AT1G49770.1	AT2G14760.3	0.679
CcbHLH050	CcbHLH082	AT1G49770.1	AT3G26744.1	0.913
CcbHLH052	CcbHLH063	AT2G28160.1	AT1G27660.1	0.749
CcbHLH052	CcbHLH120	AT2G28160.1	AT4G14410.1	0.637
CcbHLH052	CcbHLH105	AT2G28160.1	AT5G54680.1	0.68
CcbHLH052	CcbHLH132	AT2G28160.1	AT3G56980.1	0.959
CcbHLH054	CcbHLH134	AT4G33880.1	AT1G63650.3	0.548
CcbHLH054	CcbHLH077	AT4G33880.1	AT1G66470.1	0.568
CcbHLH054	CcbHLH134	AT4G33880.1	AT4G00480.2	0.429
CcbHLH054	CcbHLH094	AT4G33880.1	AT5G51790.1	0.52
CcbHLH054	CcbHLH134	AT4G33880.1	AT5G41315.1	0.581
CcbHLH054	CcbHLH131	AT4G33880.1	AT5G58010.1	0.592
CcbHLH055	CcbHLH110	AT4G37850.1	AT1G31050.1	0.62
CcbHLH055	CcbHLH146	AT4G37850.1	AT1G68810.1	0.465
CcbHLH055	CcbHLH139	AT4G37850.1	AT1G68920.1	0.568

CcbHLH055	CcbHLH112	AT4G37850.1	AT3G20640.1	0.548
CcbHLH055	CcbHLH132	AT4G37850.1	AT3G56980.1	0.463
CcbHLH055	CcbHLH100	AT4G37850.1	AT4G02590.1	0.465
CcbHLH055	CcbHLH120	AT4G37850.1	AT4G14410.1	0.463
CcbHLH055	CcbHLH064	AT4G37850.1	AT4G34530.1	0.597
CcbHLH055	CcbHLH105	AT4G37850.1	AT5G54680.1	0.441
CcbHLH056	CcbHLH148	AT5G65640.1	AT1G29950.2	0.564
CcbHLH056	CcbHLH141	AT5G65640.1	AT1G73830.1	0.506
CcbHLH056	CcbHLH058	AT5G65640.1	AT2G42280.1	0.615
CcbHLH056	CcbHLH138	AT5G65640.1	AT3G06120.1	0.548
CcbHLH056	CcbHLH112	AT5G65640.1	AT3G20640.1	0.52
CcbHLH056	CcbHLH142	AT5G65640.1	AT3G24140.1	0.831
CcbHLH056	CcbHLH081	AT5G65640.1	AT5G50915.1	0.569
CcbHLH056	CcbHLH122	AT5G65640.1	AT5G53210.1	0.447
CcbHLH059	CcbHLH119	AT1G59640.2	AT1G06150.1	0.463
CcbHLH059	CcbHLH110	AT1G59640.2	AT1G31050.1	0.576
CcbHLH059	CcbHLH117	AT1G59640.2	AT3G19860.2	0.402
CcbHLH059	CcbHLH149	AT1G59640.2	AT3G06590.2	0.467
CcbHLH059	CcbHLH144	AT1G59640.2	AT2G31730.1	0.485
CcbHLH059	CcbHLH122	AT1G59640.2	AT5G53210.1	0.485
CcbHLH062	CcbHLH146	AT2G14760.3	AT1G68810.1	0.541
CcbHLH062	CcbHLH134	AT2G14760.3	AT5G41315.1	0.452
CcbHLH062	CcbHLH105	AT2G14760.3	AT5G54680.1	0.519
CcbHLH062	CcbHLH134	AT2G14760.3	AT4G00480.2	0.564
CcbHLH064	CcbHLH149	AT4G34530.1	AT3G06590.2	0.5
CcbHLH064	CcbHLH080	AT4G34530.1	AT3G07340.1	0.573
CcbHLH064	CcbHLH117	AT4G34530.1	AT3G19860.2	0.515
CcbHLH064	CcbHLH134	AT4G34530.1	AT5G41315.1	0.524
CcbHLH064	CcbHLH122	AT4G34530.1	AT5G53210.1	0.562
CcbHLH072	CcbHLH098	AT4G16430.1	AT2G34820.1	0.446
CcbHLH072	CcbHLH074	AT4G16430.1	AT5G08130.5	0.441
CcbHLH074	CcbHLH139	AT5G08130.5	AT1G68920.1	0.519
CcbHLH074	CcbHLH140	AT5G08130.5	AT1G69010.1	0.57
CcbHLH074	CcbHLH141	AT5G08130.5	AT1G73830.1	0.593
CcbHLH074	CcbHLH095	AT5G08130.5	AT2G31220.1	0.461
CcbHLH074	CcbHLH079	AT5G08130.5	AT2G43010.1	0.616
CcbHLH074	CcbHLH105	AT5G08130.5	AT5G54680.1	0.441
CcbHLH077	CcbHLH110	AT1G66470.1	AT1G31050.1	0.501
CcbHLH077	CcbHLH134	AT1G66470.1	AT1G63650.3	0.63
CcbHLH077	CcbHLH108	AT1G66470.1	AT2G24260.1	0.405
CcbHLH077	CcbHLH096	AT1G66470.1	AT5G43650.1	0.483
CcbHLH077	CcbHLH134	AT1G66470.1	AT4G00480.2	0.54
CcbHLH077	CcbHLH131	AT1G66470.1	AT5G58010.1	0.607
CcbHLH077	CcbHLH134	AT1G66470.1	AT5G41315.1	0.62
CcbHLH079	CcbHLH137	AT2G43010.1	AT1G09530.2	0.965
CcbHLH079	CcbHLH150	AT2G43010.1	AT2G20180.2	0.664

CcbHLH079	CcbHLH122	AT2G43010.1	AT5G53210.1	0.428
CcbHLH080	CcbHLH110	AT3G07340.1	AT1G31050.1	0.515
CcbHLH080	CcbHLH144	AT3G07340.1	AT2G31730.1	0.4
CcbHLH080	CcbHLH122	AT3G07340.1	AT5G53210.1	0.407
CcbHLH080	CcbHLH128	AT3G07340.1	AT4G20970.1	0.651
CcbHLH081	CcbHLH126	AT5G50915.1	AT1G10586.1	0.624
CcbHLH081	CcbHLH115	AT5G50915.1	AT1G22490.1	0.514
CcbHLH081	CcbHLH148	AT5G50915.1	AT1G29950.2	0.545
CcbHLH081	CcbHLH110	AT5G50915.1	AT1G31050.1	0.609
CcbHLH081	CcbHLH099	AT5G50915.1	AT1G32640.1	0.425
CcbHLH081	CcbHLH146	AT5G50915.1	AT1G68810.1	0.565
CcbHLH081	CcbHLH144	AT5G50915.1	AT2G31730.1	0.576
CcbHLH081	CcbHLH138	AT5G50915.1	AT3G06120.1	0.72
CcbHLH081	CcbHLH112	AT5G50915.1	AT3G20640.1	0.721
CcbHLH081	CcbHLH082	AT5G50915.1	AT3G26744.1	0.622
CcbHLH081	CcbHLH132	AT5G50915.1	AT3G56980.1	0.591
CcbHLH081	CcbHLH134	AT5G50915.1	AT4G00480.2	0.686
CcbHLH081	CcbHLH134	AT5G50915.1	AT4G09820.1	0.494
CcbHLH081	CcbHLH134	AT5G50915.1	AT5G41315.1	0.565
CcbHLH081	CcbHLH122	AT5G50915.1	AT5G53210.1	0.597
CcbHLH082	CcbHLH138	AT3G26744.1	AT3G06120.1	0.966
CcbHLH082	CcbHLH142	AT3G26744.1	AT3G24140.1	0.722
CcbHLH082	CcbHLH093	AT3G26744.1	AT3G61950.1	0.449
CcbHLH082	CcbHLH105	AT3G26744.1	AT5G54680.1	0.55
CcbHLH082	CcbHLH122	AT3G26744.1	AT5G53210.1	0.983
CcbHLH091	CcbHLH146	AT2G31210.1	AT1G68810.1	0.551
CcbHLH091	CcbHLH116	AT2G31210.1	AT2G16910.1	0.439
CcbHLH091	CcbHLH108	AT2G31210.1	AT2G24260.1	0.518
CcbHLH091	CcbHLH109	AT2G31210.1	AT5G57150.4	0.431
CcbHLH091	CcbHLH096	AT2G31210.1	AT5G43650.1	0.535
CcbHLH092	CcbHLH119	AT4G00050.1	AT1G06150.1	0.594
CcbHLH092	CcbHLH138	AT4G00050.1	AT3G06120.1	0.432
CcbHLH092	CcbHLH105	AT4G00050.1	AT5G54680.1	0.416
CcbHLH092	CcbHLH122	AT4G00050.1	AT5G53210.1	0.66
CcbHLH093	CcbHLH145	AT3G61950.1	AT1G01260.1	0.519
CcbHLH093	CcbHLH139	AT3G61950.1	AT1G68920.1	0.582
CcbHLH093	CcbHLH109	AT3G61950.1	AT5G57150.4	0.553
CcbHLH095	CcbHLH146	AT2G31220.1	AT1G68810.1	0.621
CcbHLH095	CcbHLH116	AT2G31220.1	AT2G16910.1	0.429
CcbHLH095	CcbHLH109	AT2G31220.1	AT5G57150.4	0.402
CcbHLH095	CcbHLH096	AT2G31220.1	AT5G43650.1	0.516
CcbHLH096	CcbHLH115	AT5G43650.1	AT1G22490.1	0.514
CcbHLH096	CcbHLH109	AT5G43650.1	AT5G57150.4	0.963
CcbHLH100	CcbHLH110	AT4G02590.1	AT1G31050.1	0.79
CcbHLH100	CcbHLH105	AT4G02590.1	AT5G54680.1	0.542
CcbHLH105	CcbHLH140	AT5G54680.1	AT1G69010.1	0.451

CcbHLH105	CcbHLH132	AT5G54680.1	AT3G56980.1	0.871
CcbHLH105	CcbHLH120	AT5G54680.1	AT4G14410.1	0.558
CcbHLH108	CcbHLH134	AT2G24260.1	AT4G00480.2	0.459
CcbHLH109	CcbHLH110	AT5G57150.4	AT1G31050.1	0.618
CcbHLH109	CcbHLH139	AT5G57150.4	AT1G68920.1	0.55
CcbHLH109	CcbHLH140	AT5G57150.4	AT1G69010.1	0.556
CcbHLH109	CcbHLH131	AT5G57150.4	AT5G58010.1	0.515
CcbHLH110	CcbHLH115	AT1G31050.1	AT1G22490.1	0.514
CcbHLH110	CcbHLH132	AT1G31050.1	AT3G56980.1	0.513
CcbHLH110	CcbHLH122	AT1G31050.1	AT5G53210.1	0.605
CcbHLH110	CcbHLH146	AT1G31050.1	AT1G68810.1	0.643
CcbHLH112	CcbHLH148	AT3G20640.1	AT1G29950.2	0.637
CcbHLH112	CcbHLH146	AT3G20640.1	AT1G68810.1	0.637
CcbHLH112	CcbHLH139	AT3G20640.1	AT1G68920.1	0.581
CcbHLH119	CcbHLH139	AT1G06150.1	AT1G68920.1	0.549
CcbHLH120	CcbHLH132	AT4G14410.1	AT3G56980.1	0.872
CcbHLH122	CcbHLH137	AT5G53210.1	AT1G09530.2	0.447
CcbHLH122	CcbHLH144	AT5G53210.1	AT2G31730.1	0.485
CcbHLH122	CcbHLH132	AT5G53210.1	AT3G56980.1	0.415
CcbHLH122	CcbHLH128	AT5G53210.1	AT4G20970.1	0.507
CcbHLH126	CcbHLH134	AT1G10586.1	AT4G09820.1	0.546
CcbHLH137	CcbHLH138	AT1G09530.2	AT3G06120.1	0.43
CcbHLH137	CcbHLH150	AT1G09530.2	AT2G20180.2	0.648
CcbHLH139	CcbHLH146	AT1G68920.1	AT1G68810.1	0.526
CcbHLH139	CcbHLH149	AT1G68920.1	AT3G06590.2	0.623
CcbHLH140	CcbHLH148	AT1G69010.1	AT1G29950.2	0.487
CcbHLH140	CcbHLH146	AT1G69010.1	AT1G68810.1	0.617
CcbHLH146	CcbHLH148	AT1G68810.1	AT1G29950.2	0.627

---

**Table S7.** IIIf subfamily *CcbHLHs* protein interaction analysis

<i>Cinnamomun camphora</i> protein	<i>Arabidopsis thaliana</i> protein	identity	bitscore	Preferred Name
CcbHLH001	AT5G41315.1	43.2	462.2	GL3
CcbHLH001	AT1G63650.3	42.9	449.1	EGL3
CcbHLH001	AT4G00480.2	33.7	274.6	ATMYC1
CcbHLH001	AT4G09820.1	31.2	261.2	TT8
CcbHLH022	AT4G09820.1	42	387.9	TT8
CcbHLH022	AT1G63650.3	29.9	258.1	EGL3
CcbHLH022	AT5G41315.1	29.3	249.6	GL3
CcbHLH022	AT4G00480.2	22.3	142.9	ATMYC1
CcbHLH118	AT5G41315.1	39.2	395.6	GL3
CcbHLH118	AT1G63650.3	39	385.2	EGL3
CcbHLH118	AT4G00480.2	30.3	235.7	ATMYC1
CcbHLH118	AT4G09820.1	28.7	224.6	TT8
CcbHLH134	AT4G09820.1	40.3	401.7	TT8
CcbHLH134	AT5G41315.1	29.1	268.9	GL3
CcbHLH134	AT1G63650.3	30.2	261.5	EGL3
CcbHLH134	AT4G00480.2	22.4	141.7	ATMYC1

**Table S8.** The primers used in the qRT-PCR.

Name	Sequence
q-CcbHLH001-F	CAATCCCGTGAAGGTTGTGC
q-CcbHLH001-R	TGAAAGGGTCTTCGTGTAGTGAGG
q-CcbHLH015-F	CAGCAATAGAACTTTGGTGGGC
q-CcbHLH015-R	TCTGCCTCGAATCCATCGGTAT
q-CcbHLH017-F	GCTGGTCGAGCTGGGTCTATTC
q-CcbHLH017-R	GCTTTATCCGTTTTGGTGGTGC
q-CcbHLH022-F	ATGGAGGTAAGCACTGAGGAGGC
q-CcbHLH022-R	CAGGTGGGAAGGAGAAGGAGACA
q-CcbHLH101-F	CTGCTCAGGTCCACAATCTTTCAG
q-CcbHLH101-R	TCATGCCACTCCCCATCCAC
q-CcbHLH118-F	GAGTTACGGTGTCTGTGGAGGG
q-CcbHLH118-R	ATGTCAACGTCAAGGTCAGGAAT
q-CcbHLH134-F	TGGATGGGGTCCTTGAACCTCG
q-CcbHLH134-R	TGCAGGCTTGGGGAAGTGGT
ACT-F	GTACAGTGTCTGGATTGGAGGCTC
ACT-R	CTGCCAGTCTTCACATGATCAGAA