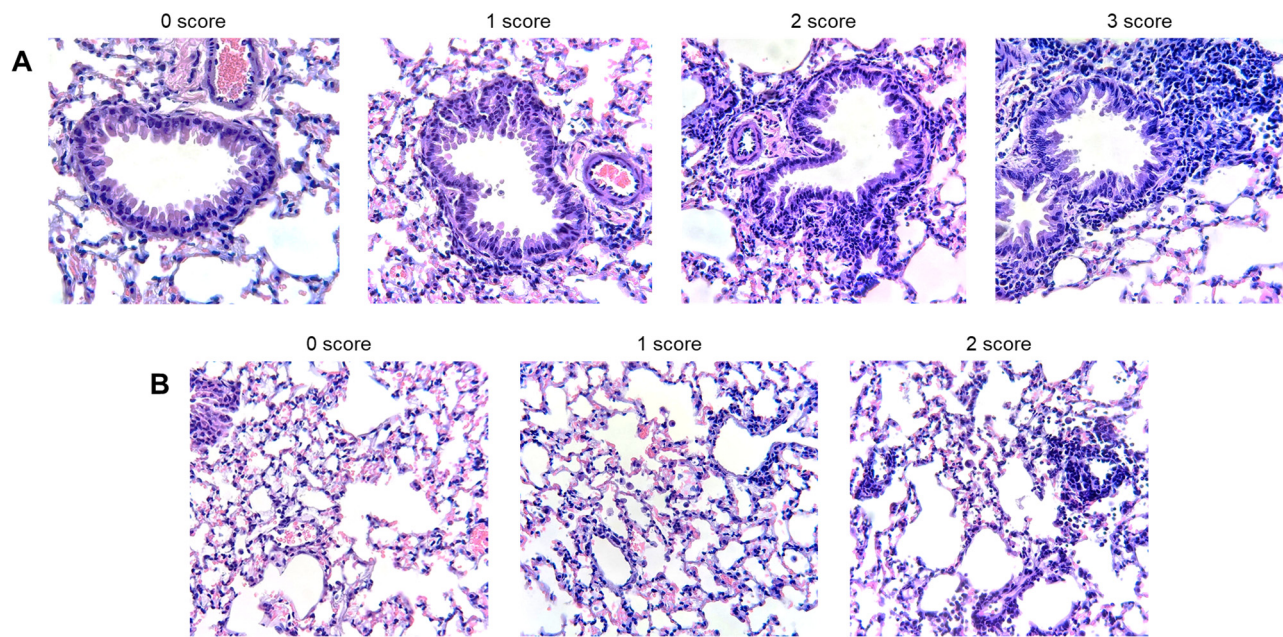


**Supplementary Figure S1.** Gating strategy used at flow cytometry analysis for the identification of immune cells in lung tissue.



**Supplementary Figure S2.** Representative images of each score found (0: regular, 1: mild, 2: moderate and 3: significant changes) of cellular bronchiolitis (A) and interstitial inflammation (B) at 40x magnification in haematoxylin and eosin (HE) stained histological lung sections.