

# Supplementary Material

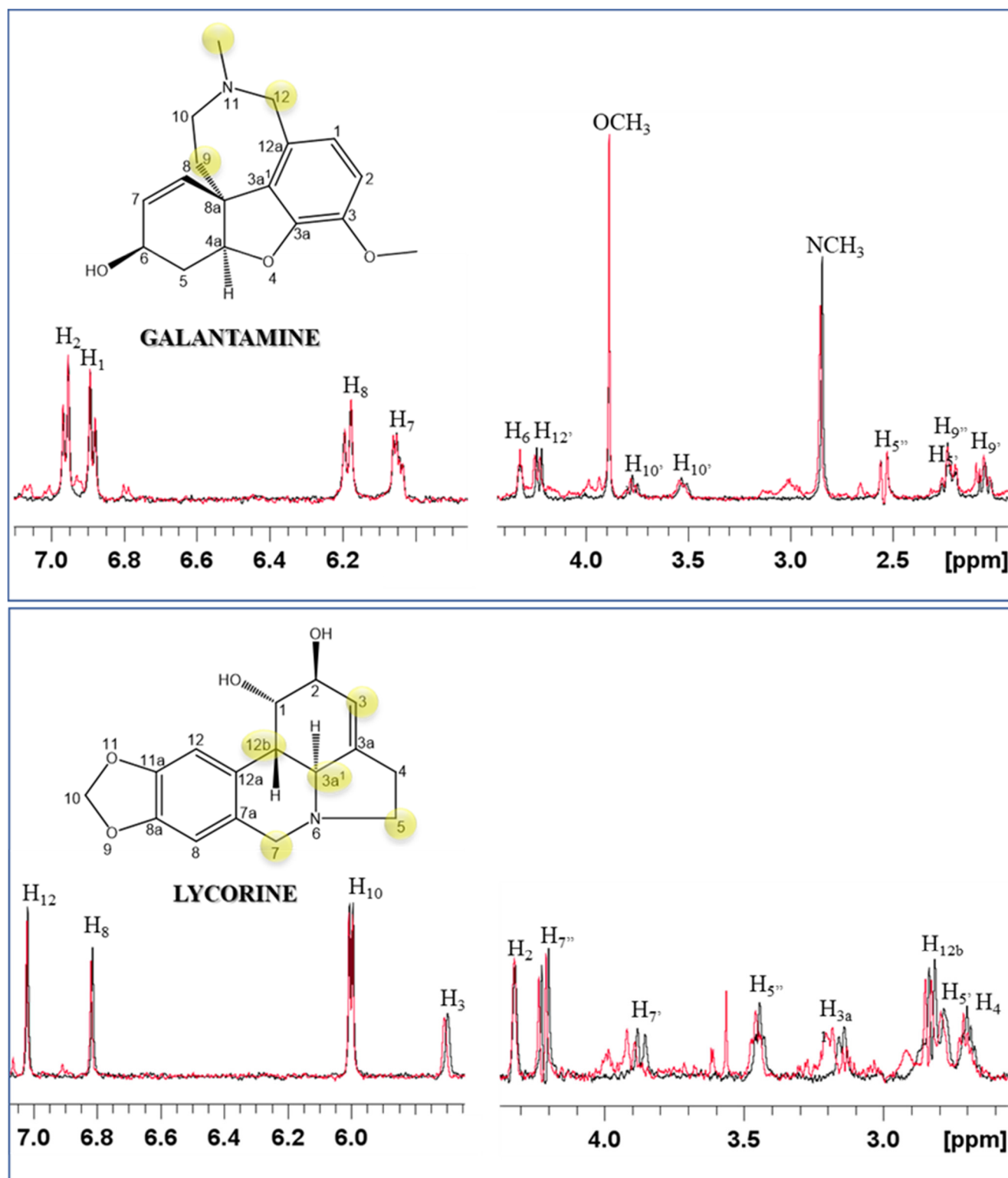


Figure S1. Selected regions of  $^1\text{H}$  spectra of GAL (upper trace) and LYC (lower) in absence (black lines) and in presence of 0.25 eqs. of A $\beta$ 40 after 48h incubation (red lines). Alkaloid concentration 0.25 mM, phosphate buffer 20 mM, pH 7.5, T = 298K.

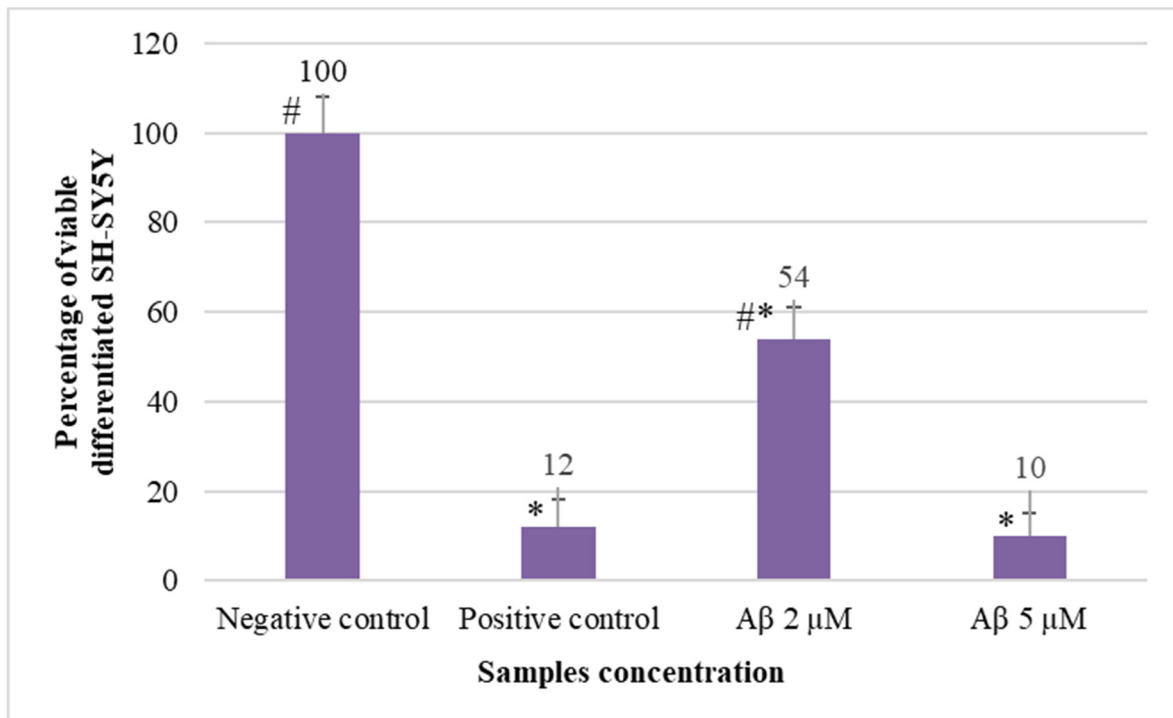


Figure S2. Percentage of viable differentiated SH-SY5Y as a function of A $\beta$  concentration, as determined by the Neutral Red Uptake. Data are mean  $\pm$  SD of three replicates for each sample. \*Values are statistically different versus negative control (complete medium),  $p < 0.05$ . # Values are statistically different versus positive control (PVC-org.Sn),  $p < 0.05$ .

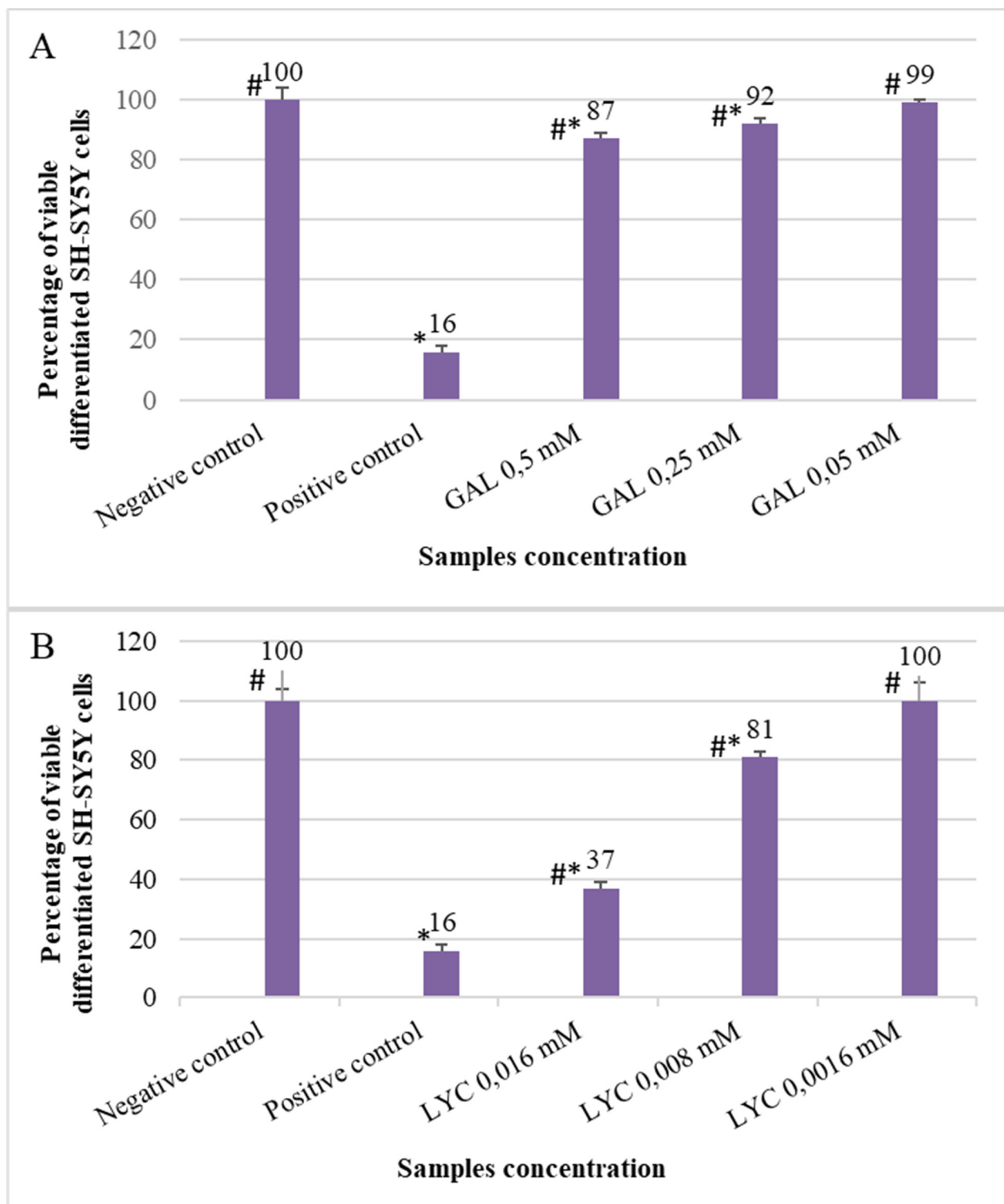


Figure S3. Percentage of viable differentiated SH-SY5Y as a function of (A) GAL and (B) LYC concentration, as determined by the Neutral Red Uptake. Data are mean  $\pm$  SD of three replicates for each sample. \*Values are statistically different versus negative control (complete medium),  $p < 0.05$ . # Values are statistically different versus positive control (PVC-org.Sn),  $p < 0.05$ .

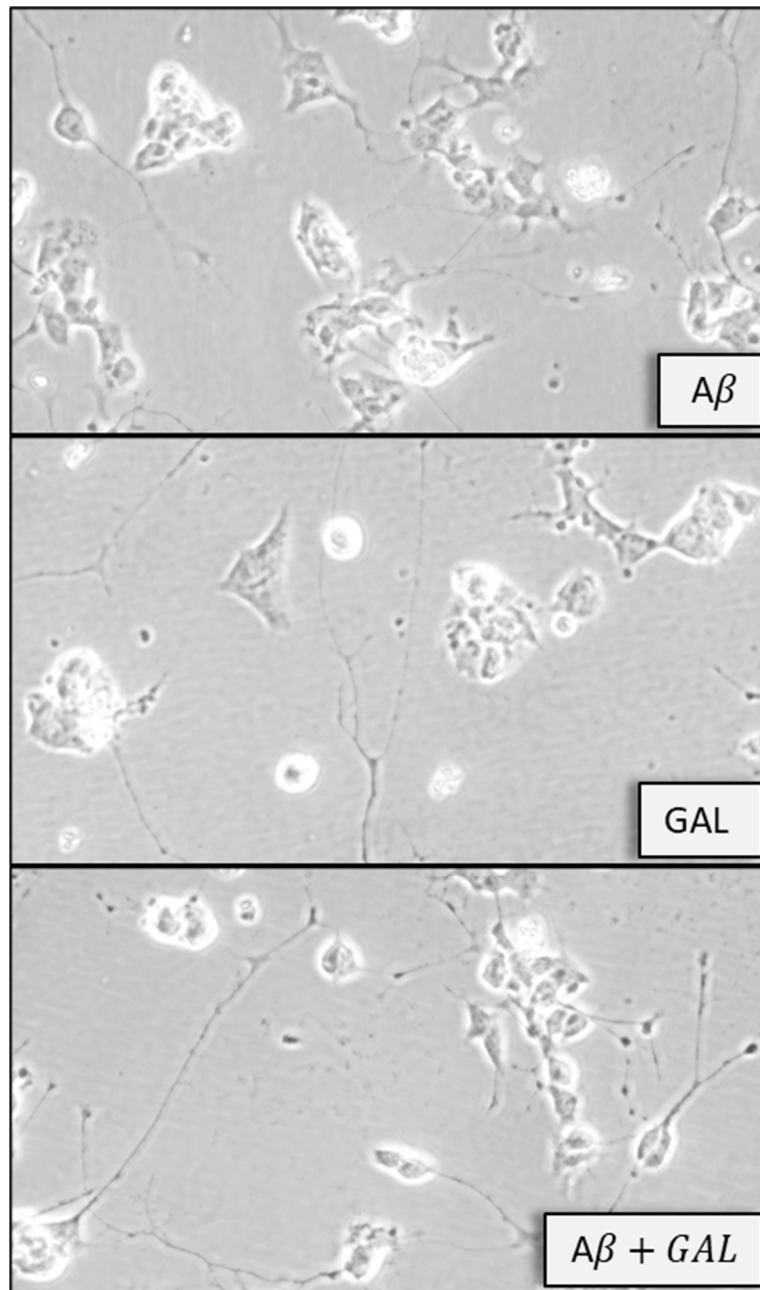


Figure S4. Optical microscope images of differentiate SH-SY5Y in contact with  $A\beta$  2  $\mu\text{M}$ ; GAL. 500  $\mu\text{M}$ ;  $A\beta$  2  $\mu\text{M}$  + GAL 500  $\mu\text{M}$ . Magnification 40x; scalebar 5  $\mu\text{m}$ .