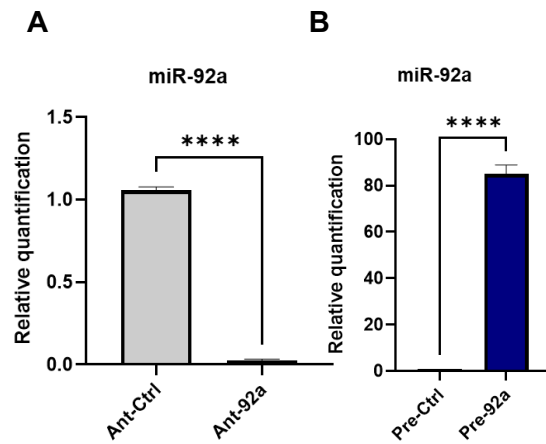
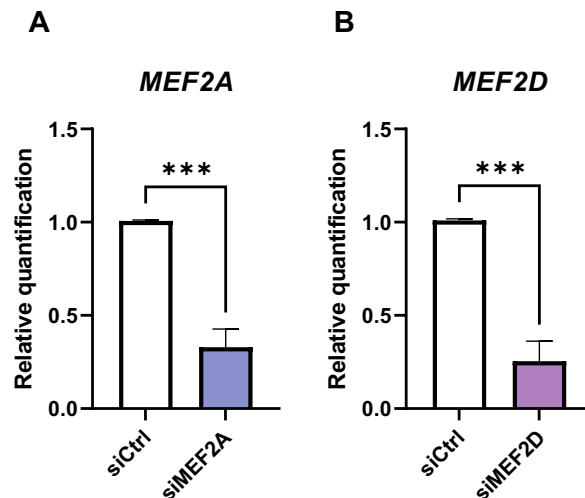


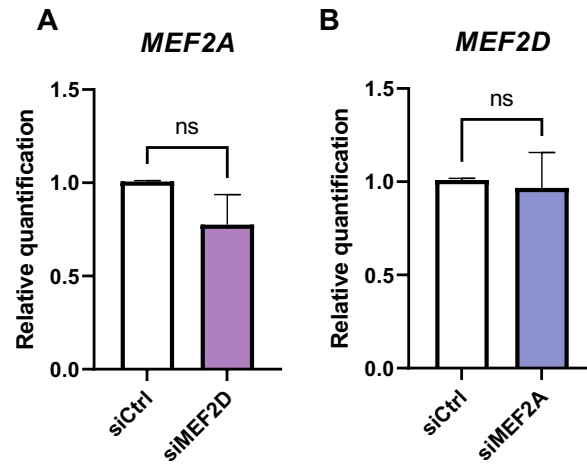
**Figure S1: Evidence of knockdown of *Klf2* and *Klf4* in MCMEC by specific siRNA.** (A, B) Quantitative PCR analysis of expression of *Klf2* and *Klf4* in MCMEC upon transfection of corresponding specific siRNA (siKlf2, siKlf4), respectively, relative to controls (siCtrl). Statistical analyses by unpaired student t-test (n = 4); \*<0.05; \*\*<0.01; \*\*\*<0.001; \*\*\*\*<0.0001.



**figure S2: Evidence of overexpression or ablation of miR-92a in HCMEC.** Quantitative PCR analysis of miR-92a in HCMEC upon (B) downregulation by Ant-92a relative to control (Ant-Ctrl) or (A) overexpression by pre-92a relative to control (pre-Ctrl). Statistical analyses by unpaired student t-test (n = 5); \*<0.05; \*\*<0.01; \*\*\*<0.001; \*\*\*\*<0.0001



**Figure S3: Evidence of knockdown of *MEF2A* or *MEF2D* in non-diabetic HCMEC.** Quantitative PCR analysis of *MEF2A* or *MEF2D* in non-diabetic HCMEC upon transfection with respective siRNA (siMEF2A or siMEF2D) compared to control (siCtrl). Statistical analyses by unpaired student t-test (n = 4) ; \*<0.05; \*\*<0.01; \*\*\*<0.001; \*\*\*\*<0.0001.



**Figure S4: Quantification of *MEF2A* or *MEF2D* in non-diabetic HCMEC upon *MEF2D* or *MEF2A* downregulation.** Quantitative PCR analysis of *MEF2A* or *MEF2D* in non-diabetic HCMEC upon transfection with respective siRNA (siMEF2A or siMEF2D) compared to control (siCtrl). Statistical analyses by unpaired student t-test (n = 4); \*<0.05; \*\*<0.01; \*\*\*<0.001; \*\*\*\*<0.0001.