

Gestational Diabetes Mellitus and Small-For-Gestational-Age: An Insight into the Placental Molecular Biomarkers

Christian Giommi ^{1,2,†}, Marta Lombó ^{1,2,3,†}, Nina Montik ⁴, Michela Paolucci ⁴, Valentina Notarstefano ¹, Giovanni Delli Carpini ⁴, Andrea Ciavattini ⁴, Antonio Ragusa ⁵, Francesca Maradonna ^{1,2,*}, Elisabetta Giorgini ^{1,‡}, and Oliana Carnevali ^{1,2,*}

¹ Department of Life and Environmental Sciences, Università Politecnica delle Marche, 60131 Ancona, Italy

² INBB—Consorzio Interuniversitario di Biosistemi e Biostrutture, 00136 Roma, Italy

³ Department of Molecular Biology, Faculty of Biology and Environmental Sciences, Universidad de León, 24071 León, Spain

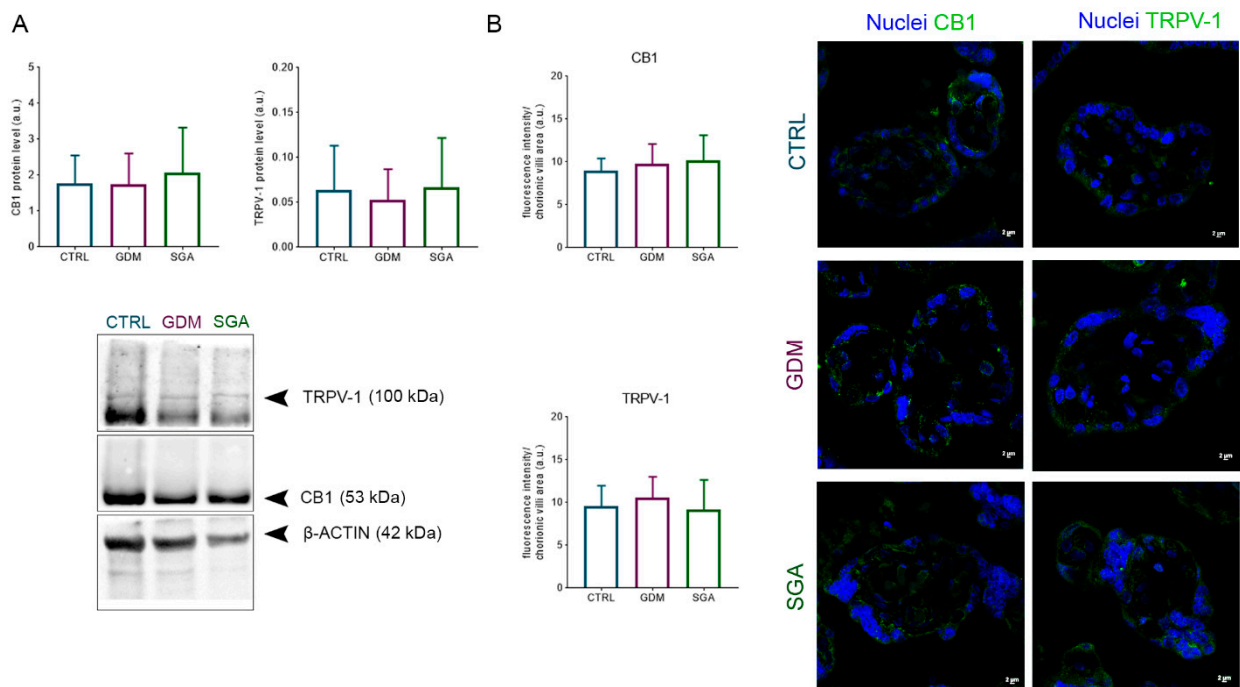
⁴ Department of Odontostomatological and Specialized Clinical Sciences, Università Politecnica delle Marche, 60020 Ancona, Italy

⁵ Department of Obstetrics and Gynecology, Università Campus Bio Medico di Roma, 00128 Roma, Italy

† these authors contributed equally as first authors

‡ these authors contributed equally as co-last authors

* Correspondence: f.maradonna@staff.univpm.it (F.M.) and o.carnevali@staff.univpm.it (O.C.)



Supplementary Figure S1. Relative levels of endocannabinoid receptors in the control and pathological placenta slices (A). Bars represent the densitometric analysis of CB1 (53 kDa) / β -actin (42 kDa) ratio and TRPV-1 (100 kDa) / β -actin (42 kDa) \pm SD of twelve independent replicates ($n = 12$). Analysis of the CB1 and TRPV-1 levels in chorionic villi by immunohistochemistry (B). Bars represent the fluorescence intensity per area of chorionic villi \pm SD of five independent samples ($n = 5$). In confocal images, nuclei are marked with DAPI (blue) and CB1 or TRPV-1 are marked in green (Alexa Fluor® 488); scale bar = 2 μ m.