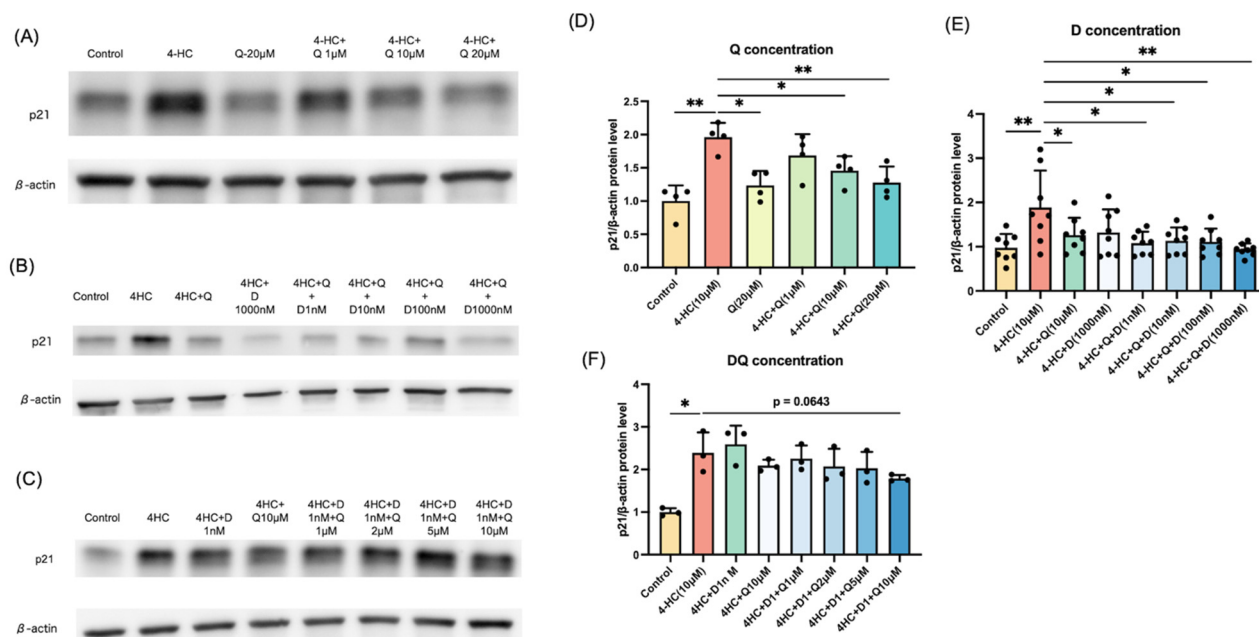


Supplementary Information

The role of cellular senescence in cyclophosphamide-induced primary ovarian insufficiency

Zixin Xu et al.



Supplementary Figure S1. Determination of the optimal concentrations of DQ. **(A, D)** Human GLCs were pretreated with 1, 10, and 20 μ M quercetin for 24 h before administration of 4-HC. **(B, E)** Human GLCs were pretreated with 10 μ M quercetin and 1, 10, 100, and 1000 nM dasatinib for 24 h before administration of 4-HC. **(C, F)** Human GLCs were pretreated with 1 nM dasatinib and 1, 2, 5, and 10 μ M quercetin for 24 h before administration of 4-HC. Protein expression of p21 in human GLCs was analyzed by western blotting. β -actin was used as a loading control. Representative images are shown in A–C. Quantitative analysis of western blotting is shown in D–F. Values represent mean \pm SD. Student's *t*-test was used for statistical analysis. * $p < 0.05$ and ** $p < 0.01$ compared with the 4-HC-treated group. D, dasatinib; Q, quercetin.