

## **Supplemental material**

### **Comparison of the therapeutic effects of adipose- and bone marrow-derived mesenchymal stem cells on renal fibrosis**

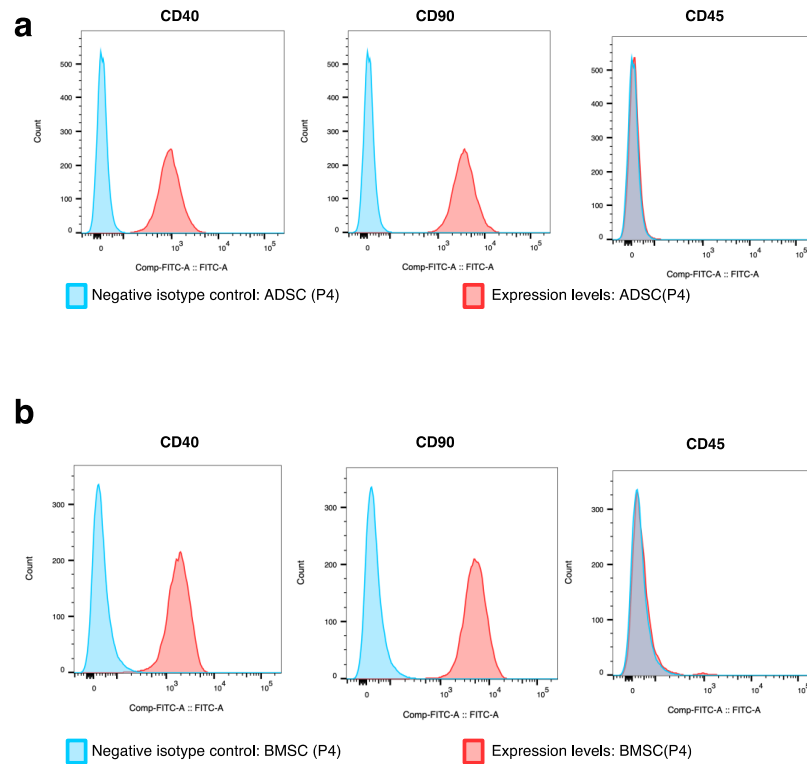
Maria Yoshida<sup>1</sup>, Ayumu Nakashima<sup>1,2\*</sup>, Naoki Ishiuchi<sup>1,2</sup>, Kisho Miyasako<sup>1</sup>, Keisuke Morimoto<sup>1</sup>, Yoshiki Tanaka<sup>1</sup>, Kensuke Sasaki<sup>1</sup>, Satoshi Maeda<sup>2,3</sup> and Takao Masaki<sup>1\*</sup>

<sup>1</sup>Department of Nephrology, Hiroshima University Hospital, 1-2-3 Kasumi, Minami-ku, Hiroshima, Hiroshima 734-8551, Japan

<sup>2</sup>Department of Stem Cell Biology and Medicine, Graduate School of Biomedical & Health Sciences, Hiroshima University, 1-2-3 Kasumi, Minami-ku, Hiroshima, Hiroshima 734-8553, Japan

<sup>3</sup>TWOCELLS Company, Limited, 16-35 Hijiyama-honmachi, Minami-ku, Hiroshima, Hiroshima 732-0816, Japan.

This file includes supplementary figure S1.



**Supplementary figure S1.** Cell surface markers on mesenchymal stem cells (MSCs).

Flow cytometry showed the expression of surface markers on **(a)** adipose tissue-derived MSCs (ADSCs) and **(b)** bone marrow-derived MSCs (BMSCs).