

**Supplementary Figure S1.** Western blot of the fig.1-B. The *CPNE7* protein expression level by western blot in five cell lines. (SW480; colon adenocarcinoma, SW620; colorectal carcinoma, HCT116; colorectal carcinoma, HT29; colon adenocarcinoma, DLD1; colon adenocarcinoma, CCD-18-co; colon normal fibroblast.)



SW480

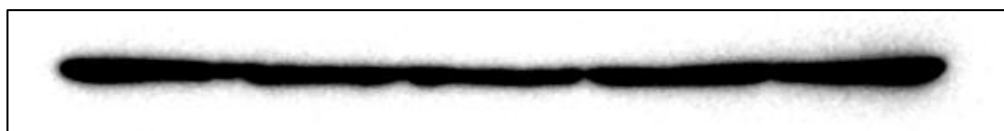
SW620

HCT116

HT29

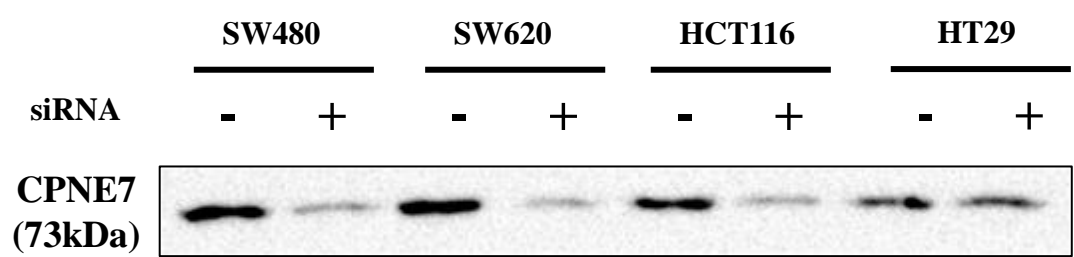
CCD-co-18

$\beta$  -actin  
(42kDa)

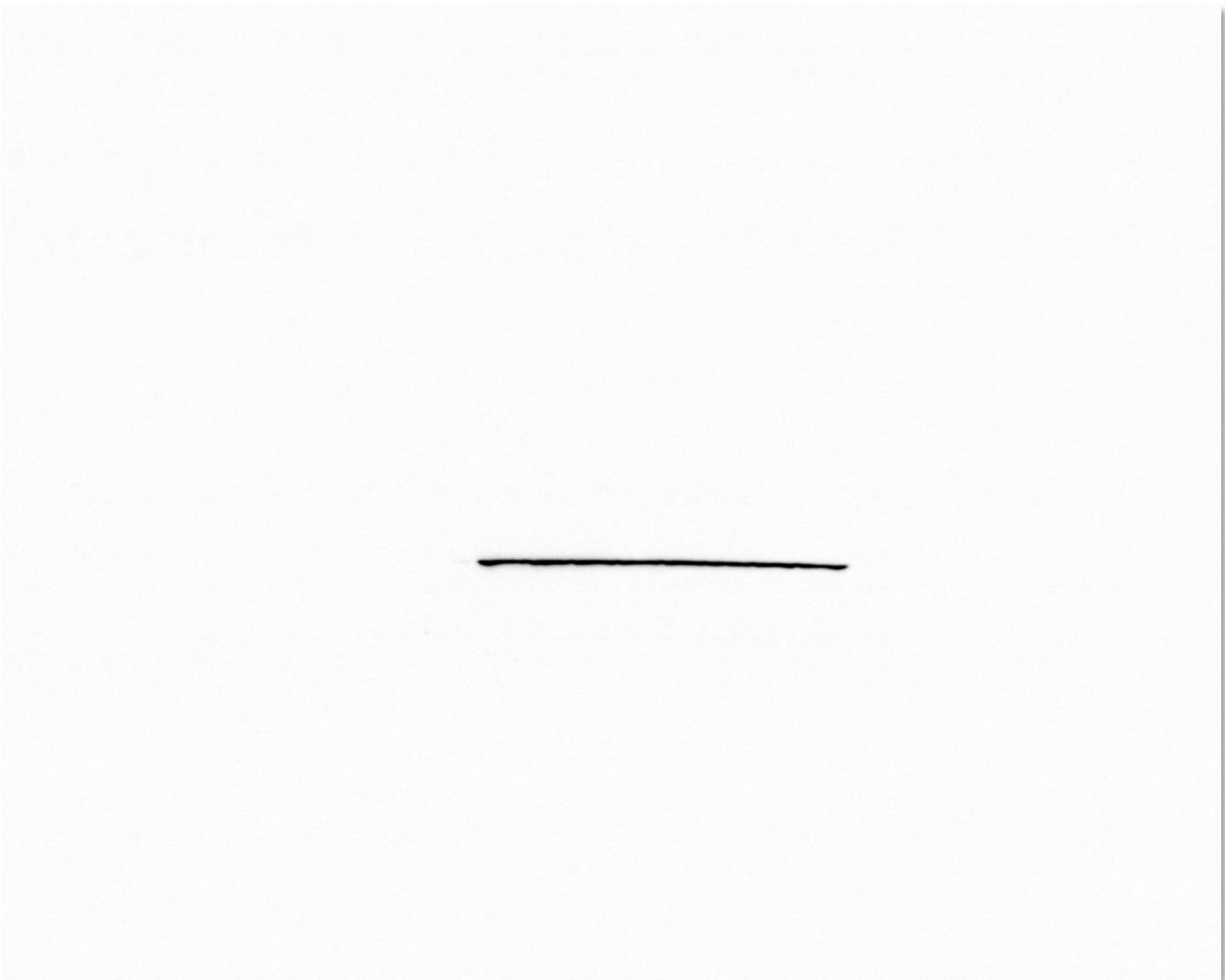


**Supplementary Figure S2.** Western blot of the fig.1-B.

The  $\beta$ -actin protein expression level by western blot in five cell lines .

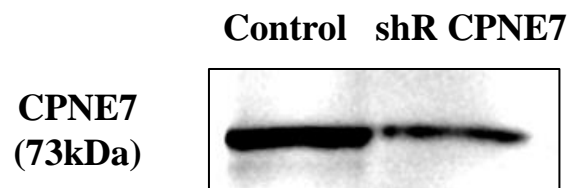
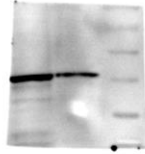


**Supplementary Figure S3.** Western blot of the fig.2-B. Identify the effects of *CPNE7* siRNA transfection through Western blotting.

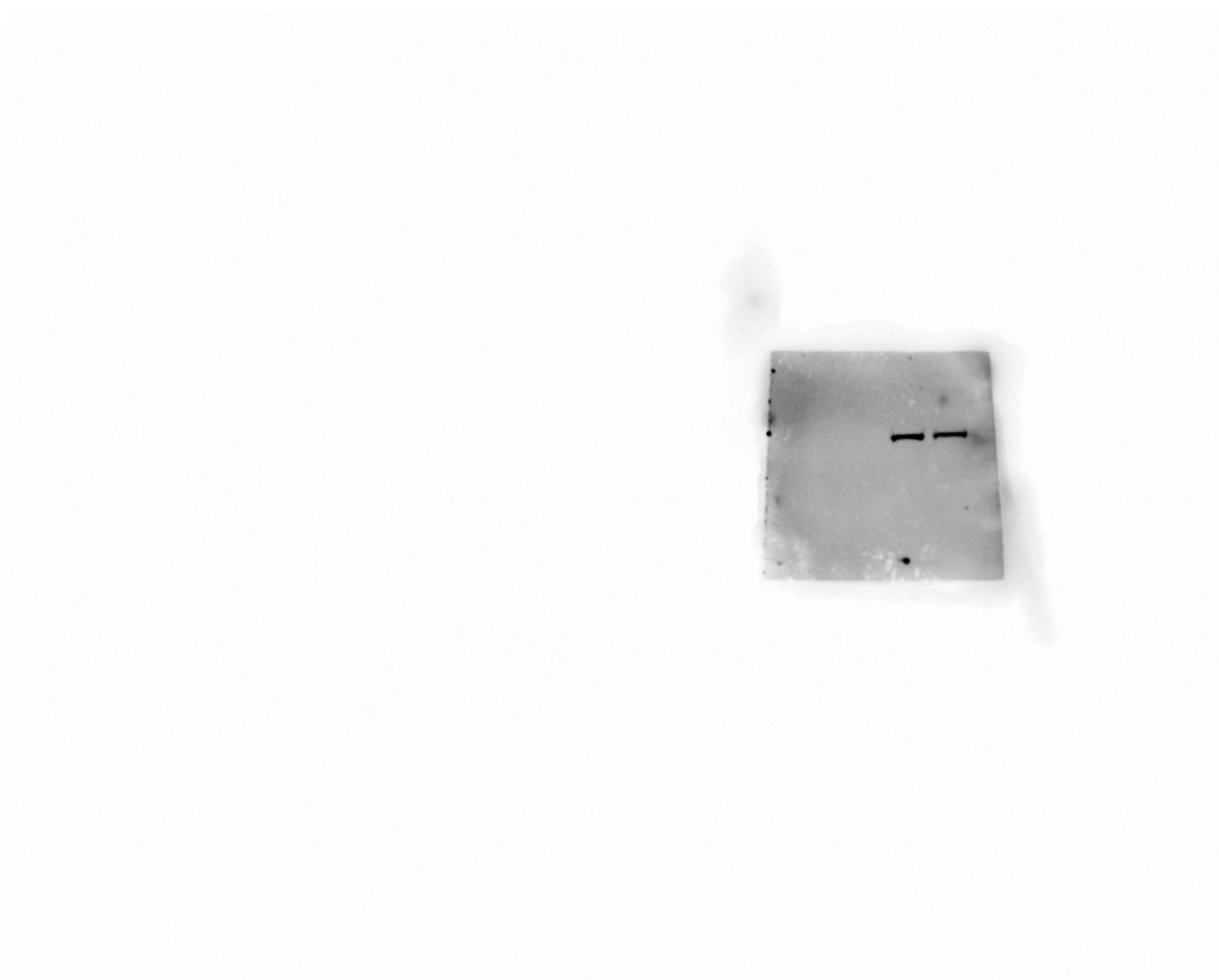


	SW480		SW620		HCT116		HT29	
siRNA	-	+	-	+	-	+	-	+
$\beta$ -actin (42kDa)								

**Supplementary Figure S4.** Western blot of the fig.2-B.  *$\beta$ -actin* expression was assessed by Western blot in four CRC cell lines and in each cell line infected with *CPNE7* siRNA.



**Supplementary Figure S5.** Western blot of the fig.3-A. Identify the effects of *CPNE7* siRNA transfection through Western blotting.



**Supplementary Figure S6.** Western blot of the fig.3-A. *β-actin* expression was assessed by Western blot in SW480 and in cell line infected with *CPNE7* shRNA.