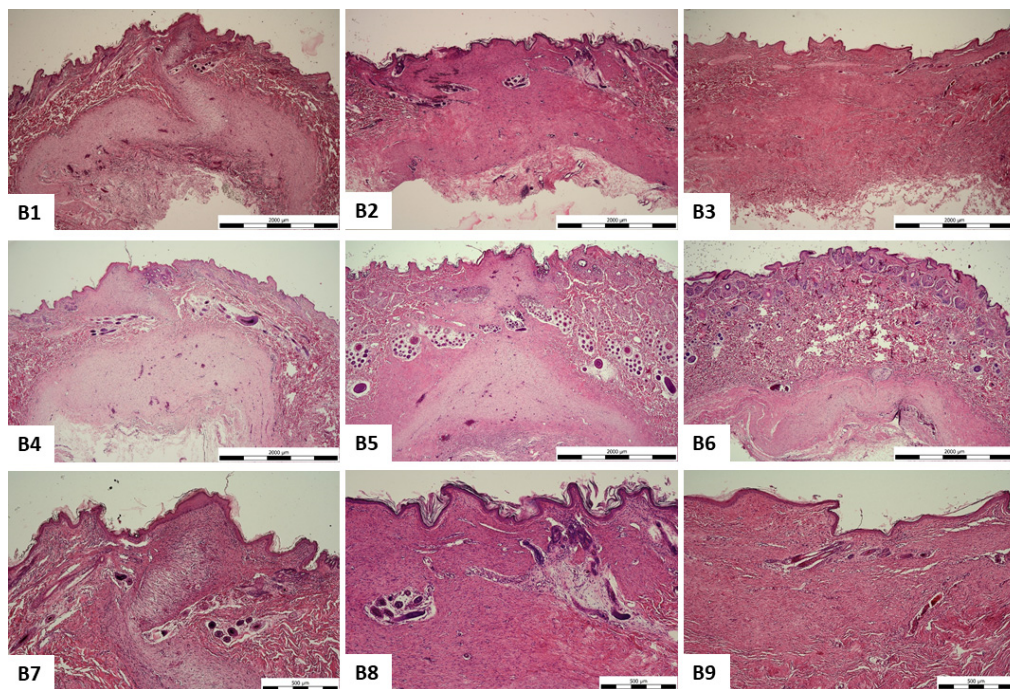
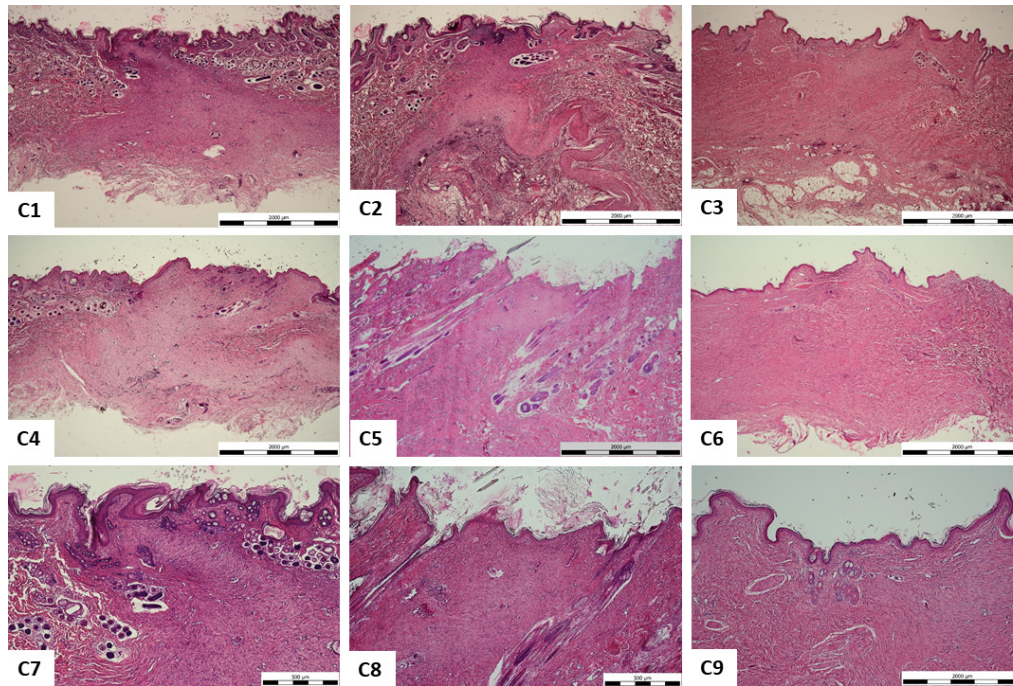


**Figure S1. Representative microphotographs of histopathological analysis for control group (A1-A9).** Healing periods: 8 weeks (A1, A4, A7), 10 weeks (A2, A5, A8), 12 weeks (A3, A6, A9); A1 – A6 Scale bar = 2000 µm, A7 – A9 Scale bar = 500 µm.



**Figure S2. Representative microphotographs of histopathological analysis for implant group (B1-B9).** Healing periods: 8 weeks (B1, B4, B7), 10 weeks (B2, B5, B8), 12 weeks (B3, B6, B9); B1 – B6 Scale bar = 2000 µm, A7 – A9 Scale bar = 500 µm.





**Figure S3. Representative microphotographs of histopathological analysis for implant + medium group (C1-C9).** Healing periods: 8 weeks (C1, C4, C7), 10 weeks (C2, C5, C8), 12 weeks (C3, C6, C9); C1 – C6 Scale bar = 2000  $\mu$ m, C7 – C9 Scale bar = 500  $\mu$ m.