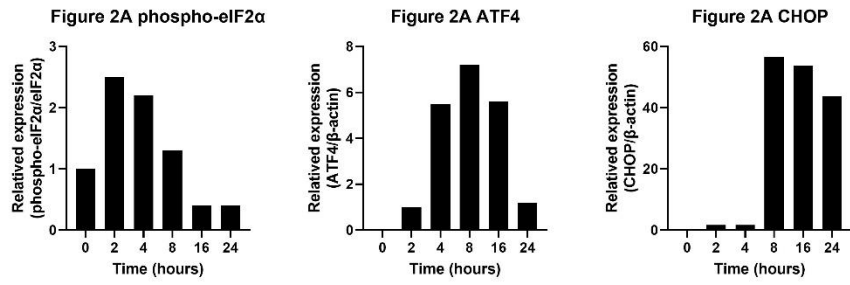


Figure S1. Graphs of quantified ratio values of each protein band shown in Figure 1. A ratio value was calculated by comparing the quantified protein band to the control (untreated). GAPDH (A, B) or β -actin (C) were used as controls, respectively.

A



B

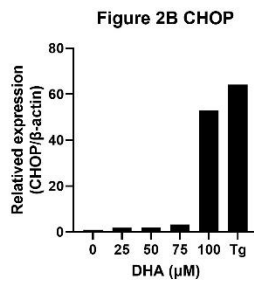


Figure S2. Graphs of quantified ratio values of each protein band shown in Figure 2. A ratio value was calculated by comparing the quantified protein band to the control (untreated). eIF2α or β-actin were used as controls, respectively.

A

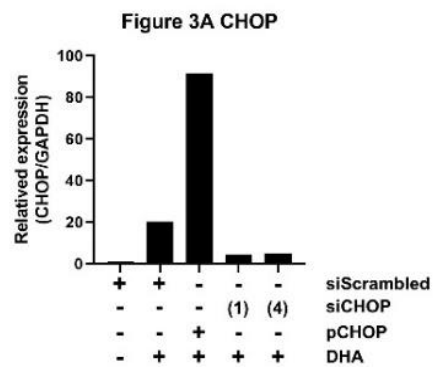


Figure S3. A graph of quantified ratio values of each protein band shown in Figure 3. A ratio value was calculated by comparing the quantified protein band to the control (untreated). GAPDH was used as a control.

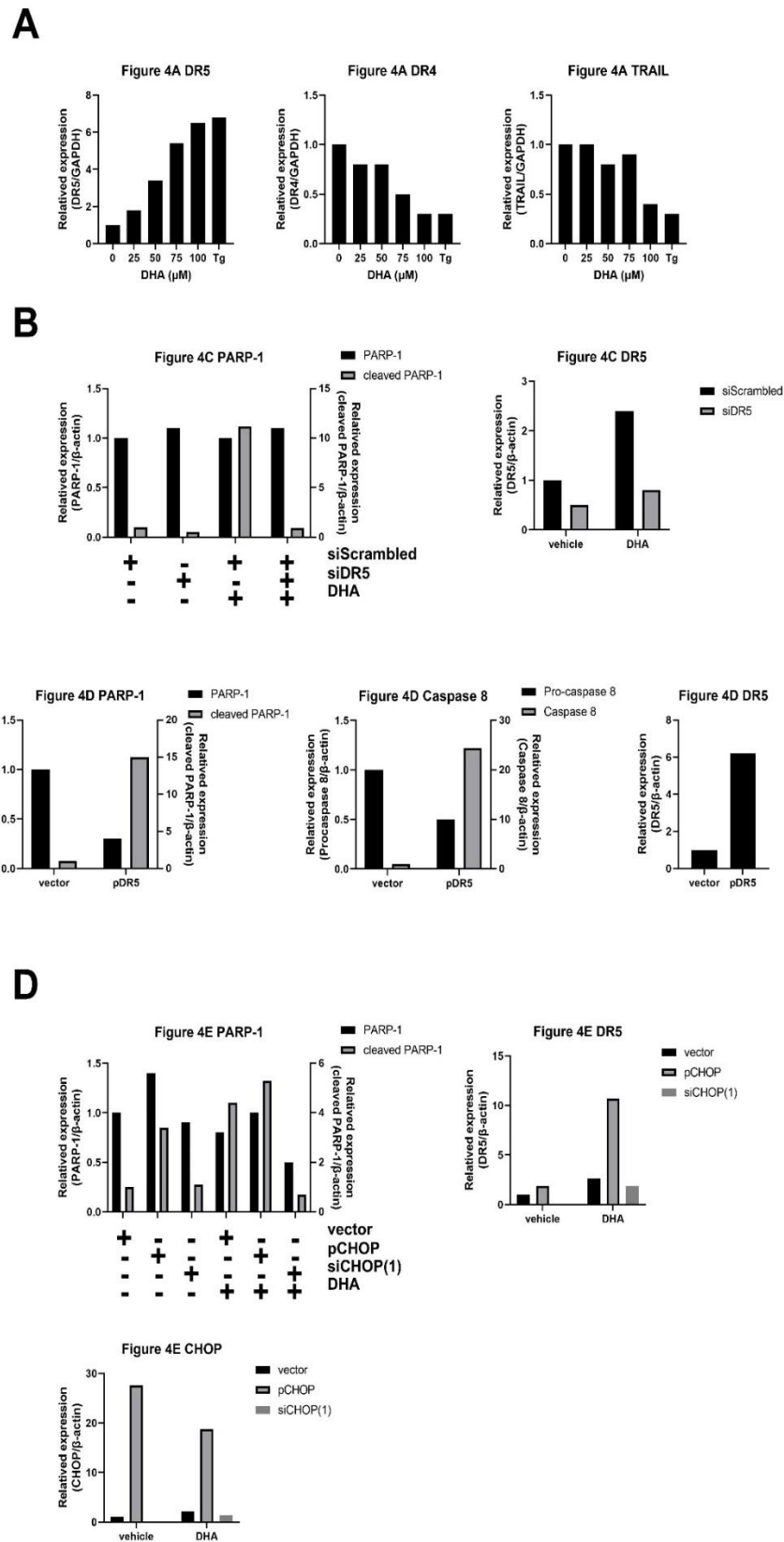


Figure S4. Graphs of quantified ratio values of each protein band shown in Figure 4. A ratio value was calculated by comparing the quantified protein band to the control (untreated). GAPDH (A) or β -actin (B, C, D) were used as controls, respectively.

A

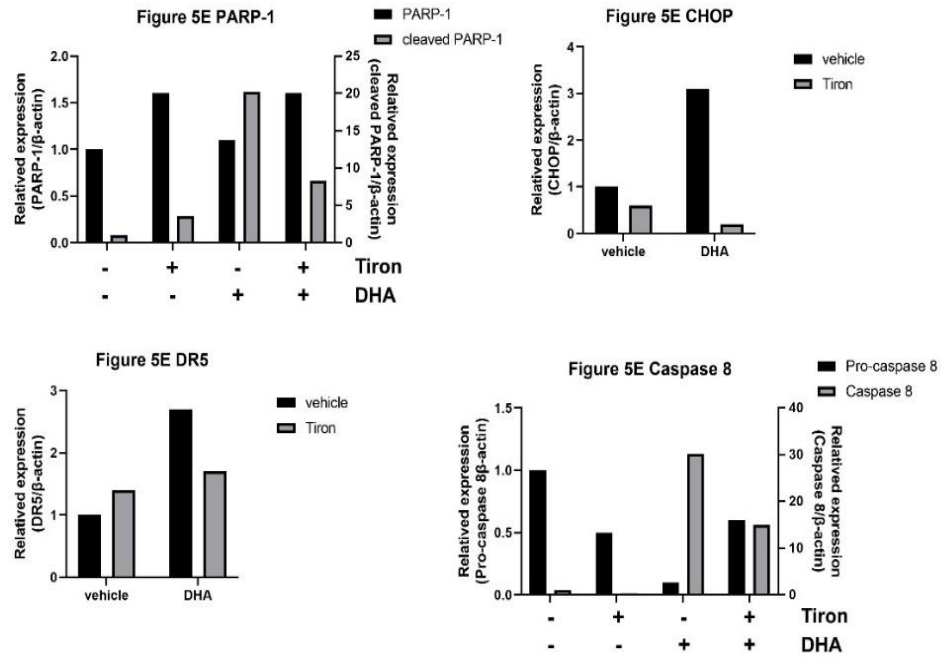


Figure S5. Graphs of quantified ratio values of each protein band shown in Figure 5. A ratio value was calculated by comparing the quantified protein band to the control (untreated). β -actin was used as a control.

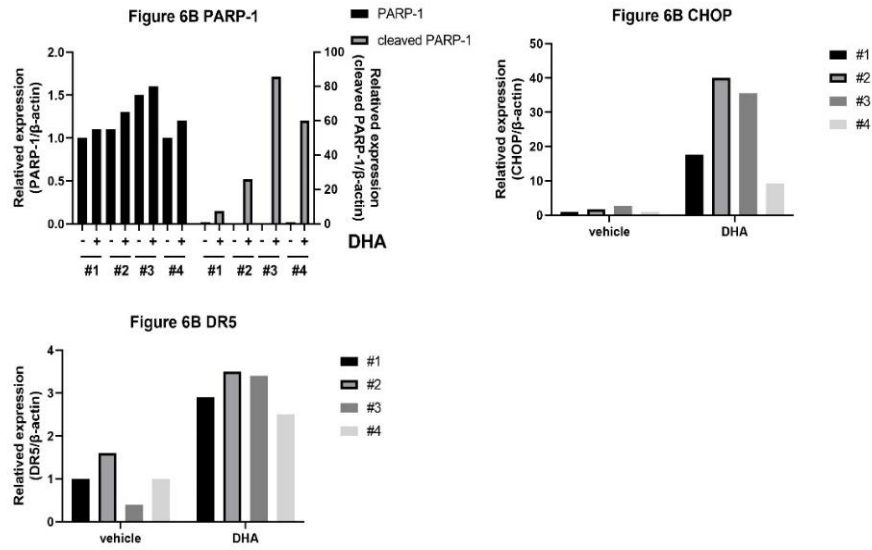
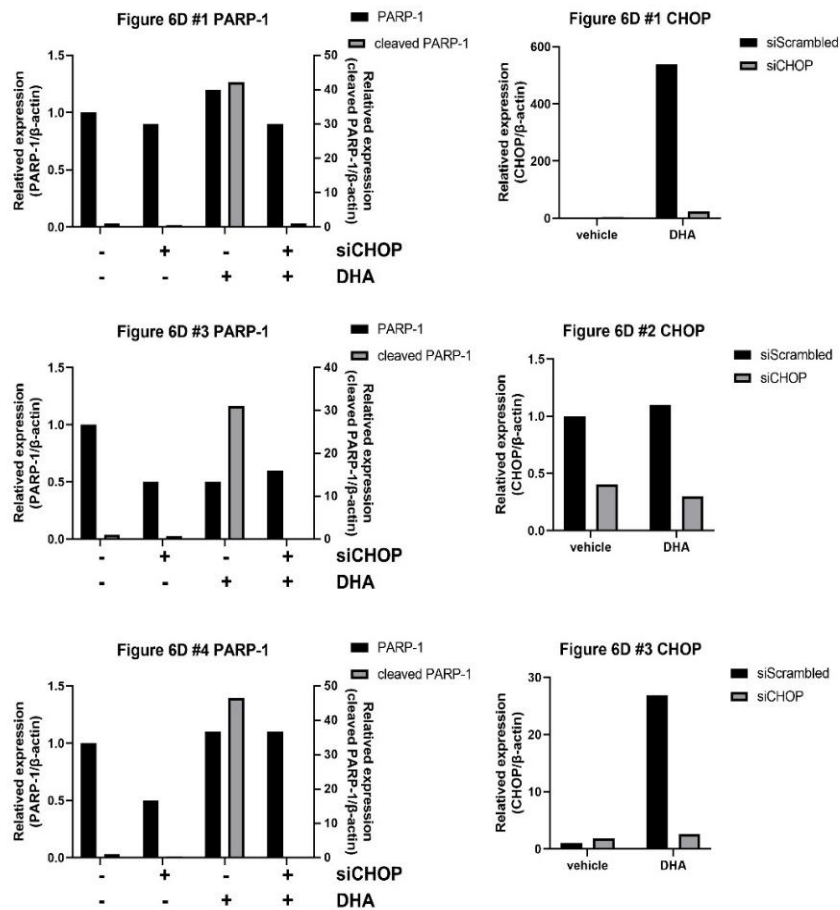
A**B**

Figure S6. Graphs of quantified ratio values of each protein band shown in Figure 6. A ratio value was calculated by comparing the quantified protein band to the control (untreated). β -actin was used as a control.

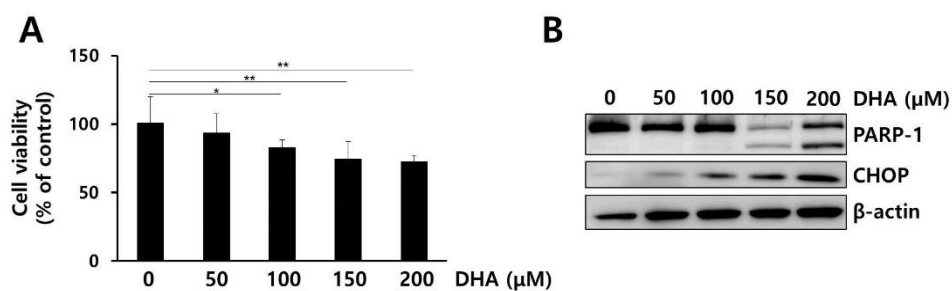


Figure S7. DHA induces apoptosis in A549 cells. (A) Cells were treated with various concentrations of DHA for 24 h and cell viability was determined by using Ez-cytox assay as described in the Materials and Methods. Data represent the means \pm S.D. of three independent experiments performed in triplicate. A Significant difference is indicated as * $p < 0.05$, ** $p < 0.01$. (B) Cells were treated with various concentrations of DHA for 24 h and cell lysates were subjected to SDS-PAGE, followed by immunoblot analysis using antibodies specific to PARP-1, CHOP or β -actin.