

# Supplementary Materials

## Identification of Human UDP-Glucuronosyltransferase Involved in Gypensapogenin C Glucuronidation and Species Differences

Juan Chen <sup>1</sup>, Lin Qin <sup>1,2</sup>, Xingdong Wu <sup>1,2</sup>, Daopeng Tan <sup>1,2</sup>, Yanliu Lu <sup>1,2</sup>, Yimei Du <sup>1,2</sup>, Di  
Wu <sup>1,2</sup>, Yuqi He <sup>1,2, \*</sup>

1    Guizhou Engineering Research Center of Industrial Key-technology for Dendrobium  
Nobile, Zunyi Medical University, Zunyi 563000, China

2    Joint International Research Laboratory of Ethnomedicine of Ministry of Education,  
Zunyi Medical University, Zunyi 563000, China

\* Corresponding author: Tel.: +86-17785211152

E-mail address: yqhe2016@zmu.edu.cn

Figure S1. Glucuronidation of Gypensapogenin C at different protein concentrations.

Figure S2. Glucuronidation of Gypensapogenin C at different incubation times.

Table S1. Correlation coefficients between protein concentration and Gypensapogenin C glucuronidation.

Table S2. Correlation coefficients between incubation time and Gypensapogenin C glucuronidation.

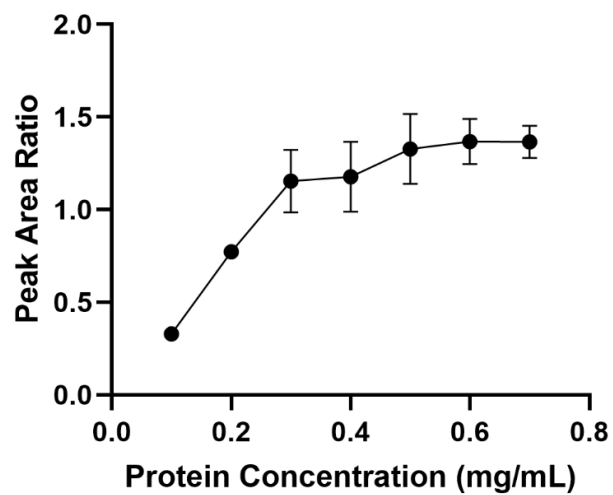


Figure S1. Glucuronidation of Gypensapogenin C at different protein concentrations.

Data are from three replicate experiments and results are expressed as mean  $\pm$  SD.

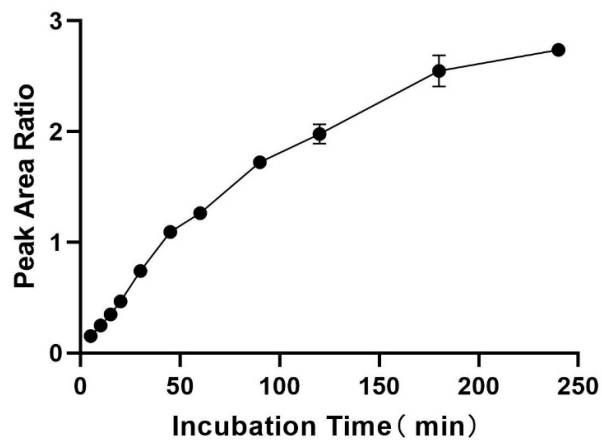


Figure S2. Glucuronidation of Gypensapogenin C at different incubation times. Data

are from three replicate experiments and results are expressed as mean  $\pm$  SD.

**Table S1.** Correlation coefficients between protein concentration and Gypensapogenin C glucuronidation.

Protein concentration rang (mg/mL)	Correlation coefficient
0.1-0.3	0.9982
0.1-0.4	0.8981
0.1-0.5	0.8831
0.1-0.6	0.8490
0.1-0.7	0.7955

**Table S2.** Correlation coefficients between incubation time and Gypensapogenin C glucuronidation.

Incubation time rang (min)	Correlation coefficient
5-15	0.9999
5-20	0.9979
5-30	0.9925
5-45	0.9973
5-60	0.9870
5-90	0.9831
5-120	0.9698
5-180	0.9597
5-240	0.9314