

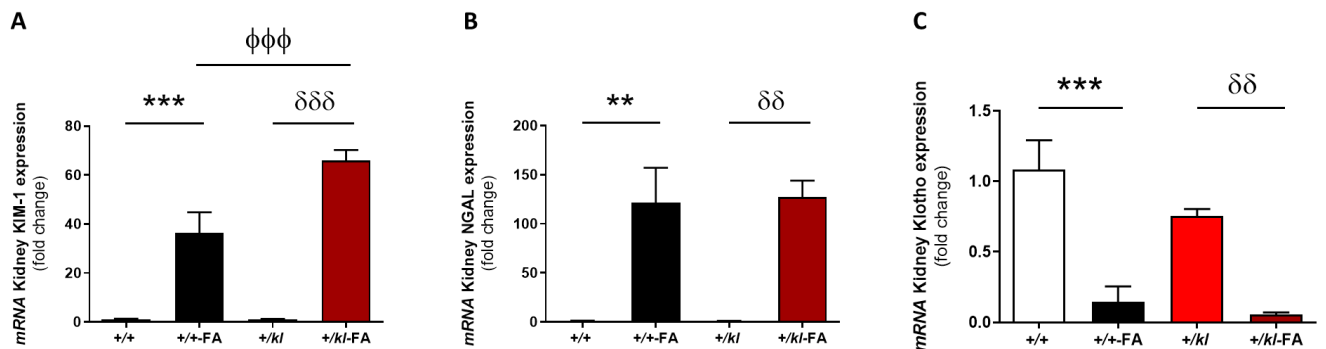
# Title: Partial Genetic Deletion of Klotho Aggravates Cardiac Calcium Mishandling in Acute Kidney Injury

**Authors:** Laura González-Lafuente, José Alberto Navarro-García, Ángela Valero-Almazán, Elena Rodríguez-Sánchez, Sara Vázquez-Sánchez, Elisa Mercado-García, Patricia Pineros, Jonay Poveda, María Fernández-Velasco, Makoto Kuro-o, Luis M. Ruilope and Gema Ruiz-Hurtado

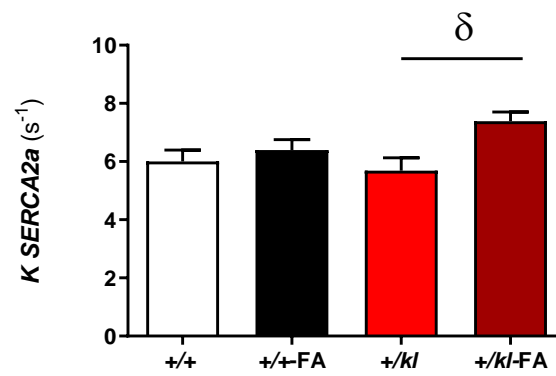
## Supplemental Material

### Supplementary Figures

**Supplemental Figure S1.** Biomarkers of kidney injury. Renal mRNA expression of (A) kidney injury molecule-1 (KIM-1), (B) neutrophil gelatinase-associated lipocalin (NGAL) and (C) Klotho, obtained from wild-type  $+/+$  ( $N = 5$ ),  $+/+$ -FA ( $N = 5$ ),  $+/-kl$  ( $N = 5$ ) and  $+/-kl$ -FA animals ( $N = 5$ ). Data are shown as mean  $\pm$  SEM. \*\*  $p < 0.01$ , \*\*\*  $p < 0.001$  vs.  $+/+$ ;  $\delta\delta$   $p < 0.01$ ,  $\delta\delta\delta$   $p < 0.001$  vs.  $+/-kl$ ;  $\Phi\Phi\Phi$   $p < 0.001$  vs.  $+/+$ -FA.



**Supplemental Figure S2.** *K* SERCA2a in cardiomyocytes from +/+ (n = 21 cells, N = 5 mice), +/-FA (n = 20 cells, N = 4 mice), +/-kl (n = 21 cells, N = 5 mice) and +/-kl-FA animals (n = 18 cells, N = 3 mice). Data are expressed as mean  $\pm$  SEM.  $\delta$   $p < 0.001$  vs. +/-kl.



## Supplementary Table

**Supplementary Table S1.** Ca<sup>2+</sup> spark characteristics in cardiomyocytes from +/+ and +/kl mice after AKI. FDHM: full width at half maximum; FDHM: full duration at half maximum.

Parameters	+/+	+/+-FA	+/kl	+/kl-FA
Peak (F/F <sub>0</sub> )	1.33 ± 0.02	1.25 ± 0.01***	1.32 ± 0.01	1.23 ± 0.01 <sup>δδδ</sup>
FWHM (μm)	3.07 ± 0.09	2.33 ± 0.08***	3.27 ± 0.07	2.33 ± 0.07 <sup>δδδ</sup>
FDHM (ms)	32.37 ± 1.23	30.21 ± 0.88	39.22 ± 1.74***	32.02 ± 0.98 <sup>δδδ</sup>

\*\*\*  $p < 0.001$  vs. +/+, <sup>δδδ</sup>  $p < 0.001$  vs. +/kl.