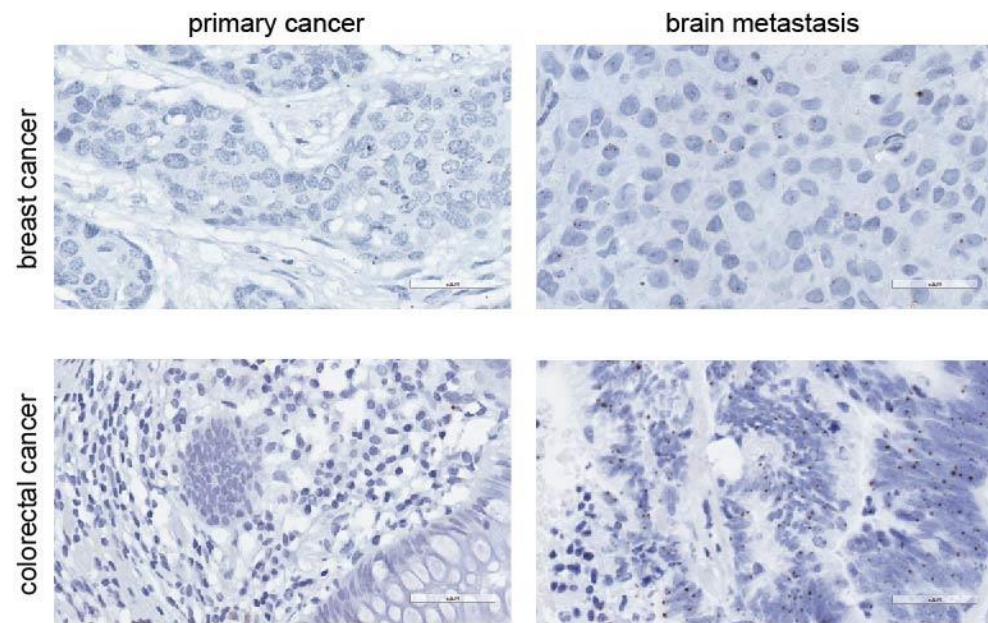


Supplementary Figure S1. Additional examples of $\Delta 133p53\beta$ mRNA expression in brain metastases. RNAscope was used to detect $\Delta 133p53\beta$ mRNA and *dapB* was used as a negative control. Images taken at 400x magnification. Scale bar, 50 μ m.



Supplementary Figure S2. Additional examples of $\Delta 133p53\beta$ mRNA expression in brain metastases and the corresponding primary tumor. Images taken at 400x magnification. Scale bar, 50 μm .