

Supplementary Table S1

Model Coefficients - ADIPONECTIN (ug/ml)

| Predictor    | Estimate | SE     | t      | p     |
|--------------|----------|--------|--------|-------|
| BMI          | 0.05670  | 0.1545 | 0.367  | 0.714 |
| Glucose      | 0.00334  | 0.0106 | 0.314  | 0.754 |
| COL. TOT     | 0.03151  | 0.0153 | 2.060  | 0.042 |
| TRIGLICERIDI | -0.00889 | 0.0122 | -0.728 | 0.468 |
| COVID        | -5.91343 | 1.6960 | -3.487 | <.001 |

<sup>a</sup> Represents reference level

Supplementary Table S2

Model Coefficients - RESISTIN (pg/mL)

| Predictor         | Estimate | SE     | t      | p     |
|-------------------|----------|--------|--------|-------|
| BMI               | -32.89   | 45.67  | -0.720 | 0.474 |
| Glucose           | -6.08    | 3.20   | -1.902 | 0.061 |
| Total cholesterol | -3.68    | 5.22   | -0.706 | 0.483 |
| Triglycerides     | 4.61     | 4.11   | 1.123  | 0.265 |
| COVID             | 2052.52  | 575.22 | 3.568  | <.001 |

<sup>a</sup> Represents reference level

Supplementary Table S3: Comparison of biochemical parameters between discharged (n.47) and death or Intensive outpatient therapy (IOT) (n.15) COVID-19 patients. Data are expressed as median value and interquartile range (IQR).

|                     | DISCHARGED<br>(n.47) |                            |                            | DEATH<br>or IOT<br>(n.15) |                            |                            | TOTAL<br>(n.62) |                            |                            | <i>p value</i>  |
|---------------------|----------------------|----------------------------|----------------------------|---------------------------|----------------------------|----------------------------|-----------------|----------------------------|----------------------------|-----------------|
|                     | <i>Median</i>        | <i>25th<br/>percentile</i> | <i>75th<br/>percentile</i> | <i>Median</i>             | <i>25th<br/>percentile</i> | <i>75th<br/>percentile</i> | <i>Median</i>   | <i>25th<br/>percentile</i> | <i>75th<br/>percentile</i> |                 |
| WBC                 | 8.79                 | 6.86                       | 11.7                       | 11.3                      | 7.49                       | 13.3                       | 9.01            | 6.85                       | 12.2                       | 0.241           |
| Neutrophils         | 7.75                 | 5.26                       | 10.6                       | 10.4                      | 6.1                        | 11.6                       | 7.98            | 5.61                       | 10.7                       | 0.276           |
| Lymphocytes         | 0.805                | 0.57                       | 1.13                       | 0.63                      | 0.43                       | 1.1                        | 0.73            | 0.57                       | 1.14                       | 0.37            |
| NLR                 | 10.5                 | 5.45                       | 14.6                       | 10.9                      | 8.58                       | 15                         | 10.8            | 5.82                       | 14.8                       | 0.473           |
| RBC                 | 4.72                 | 4.55                       | 5.25                       | 4.5                       | 4.24                       | 5.07                       | 4.7             | 4.5                        | 5.15                       | 0.096           |
| HGB                 | 13.7                 | 12.5                       | 14.3                       | 12.7                      | 11.8                       | 13.7                       | 13.4            | 12.3                       | 14.3                       | 0.125           |
| HCT                 | 39.5                 | 37.3                       | 41.2                       | 37.3                      | 34.6                       | 40.4                       | 39.2            | 36.4                       | 41                         | 0.241           |
| PLT                 | 232                  | 188                        | 280                        | 230                       | 171                        | 299                        | 232             | 183                        | 295                        | 0.575           |
| INR                 | 1.13                 | 1.07                       | 1.2                        | 1.1                       | 1.06                       | 1.25                       | 1.13            | 1.07                       | 1.21                       | 0.621           |
| PT                  | 82.5                 | 75                         | 90.5                       | 86                        | 72                         | 92                         | 83              | 75                         | 91                         | 0.615           |
| aPTT                | 28                   | 25.1                       | 31.5                       | 27.5                      | 25.9                       | 33.5                       | 27.9            | 25.2                       | 32                         | 0.749           |
| D-dimer             | 281                  | 177                        | 519                        | 569                       | 425                        | 1723                       | 402             | 208                        | 651                        | <b>0.007</b>    |
| Fibrinogen          | 641                  | 585                        | 707                        | 571                       | 536                        | 711                        | 641             | 563                        | 708                        | 0.589           |
| Azotaemia           | 52                   | 43                         | 67                         | 61                        | 53.5                       | 86                         | 55              | 44                         | 68                         | 0.062           |
| Creatinine          | 0.7                  | 0.6                        | 0.9                        | 0.8                       | 0.6                        | 1                          | 0.75            | 0.6                        | 0.9                        | 0.678           |
| Na+                 | 138                  | 135                        | 140                        | 140                       | 136                        | 142                        | 138             | 135                        | 140                        | 0.244           |
| K+                  | 4.1                  | 3.77                       | 4.63                       | 4.1                       | 3.65                       | 4.5                        | 4.1             | 3.7                        | 4.6                        | 0.875           |
| AST                 | 35                   | 25.5                       | 52                         | 35                        | 27                         | 52.5                       | 35              | 26                         | 52.5                       | 0.773           |
| ALT                 | 32                   | 22.5                       | 70.5                       | 32                        | 23                         | 66.5                       | 32              | 21.8                       | 70                         | 0.844           |
| LDH                 | 324                  | 273                        | 421                        | 509                       | 341                        | 635                        | 341             | 289                        | 494                        | <b>0.003</b>    |
| PCR                 | 8.2                  | 4.8                        | 12.1                       | 7                         | 2.75                       | 12.1                       | 7.8             | 3.85                       | 12.3                       | 0.628           |
| Triglycerides       | 157                  | 126                        | 212                        | 147                       | 122                        | 153                        | 150             | 123                        | 203                        | 0.814           |
| GGT                 | 41                   | 30                         | 89                         | 71.5                      | 36                         | 86.8                       | 49              | 30                         | 88                         | 0.711           |
| Alkaline phosp      | 53                   | 50                         | 76                         | 62                        | 43                         | 76                         | 55.5            | 47.8                       | 76                         | 0.814           |
| Amylasis            | 84                   | 62                         | 106                        | 67                        | 57                         | 68                         | 67.5            | 58.3                       | 105                        | 0.724           |
| Lipasis             | 44                   | 31                         | 55                         | 53                        | 38                         | 57                         | 44.5            | 31.5                       | 56.5                       | 0.906           |
| Total Bilirubin     | 0.64                 | 0.49                       | 0.905                      | 0.755                     | 0.578                      | 0.915                      | 0.68            | 0.51                       | 0.91                       | 0.233           |
| Albumin             | 4.2                  | 3.73                       | 4.3                        | 3.6                       | 3.23                       | 4.13                       | 4.15            | 3.38                       | 4.3                        | 0.136           |
| IL 6                | 1022                 | 720                        | 1420                       | 1061                      | 921                        | 1808                       | 40.2            | 17.5                       | 72.1                       | <b>0.048</b>    |
| IL2R                | 28.4                 | 16.2                       | 55.5                       | 53.8                      | 42.1                       | 137                        | 1061            | 794                        | 1464                       | 0.281           |
| KL6                 | 513                  | 436                        | 786                        | 1810                      | 800                        | 2464                       | 552             | 467                        | 1053                       | <b>&lt;.001</b> |
| Adiponectin (µg/ml) | 14.7                 | 11.9                       | 16.3                       | 15.1                      | 13.9                       | 18                         | 14.7            | 13.1                       | 16.4                       | 0.393           |
| Leptin (ng/ml)      | 17.4                 | 7.09                       | 25.5                       | 15.8                      | 8.87                       | 20.8                       | 16.6            | 7.79                       | 25.1                       | 0.536           |

|                    |       |       |      |       |       |      |       |       |      |       |
|--------------------|-------|-------|------|-------|-------|------|-------|-------|------|-------|
| Adiponectin/Leptin | 0.762 | 0.599 | 2.18 | 0.944 | 0.706 | 1.79 | 0.823 | 0.618 | 1.99 | 0.274 |
| Resistin (pg/mL)   | 5613  | 4341  | 6935 | 5798  | 4657  | 7403 | 5645  | 4395  | 7177 | 0.606 |

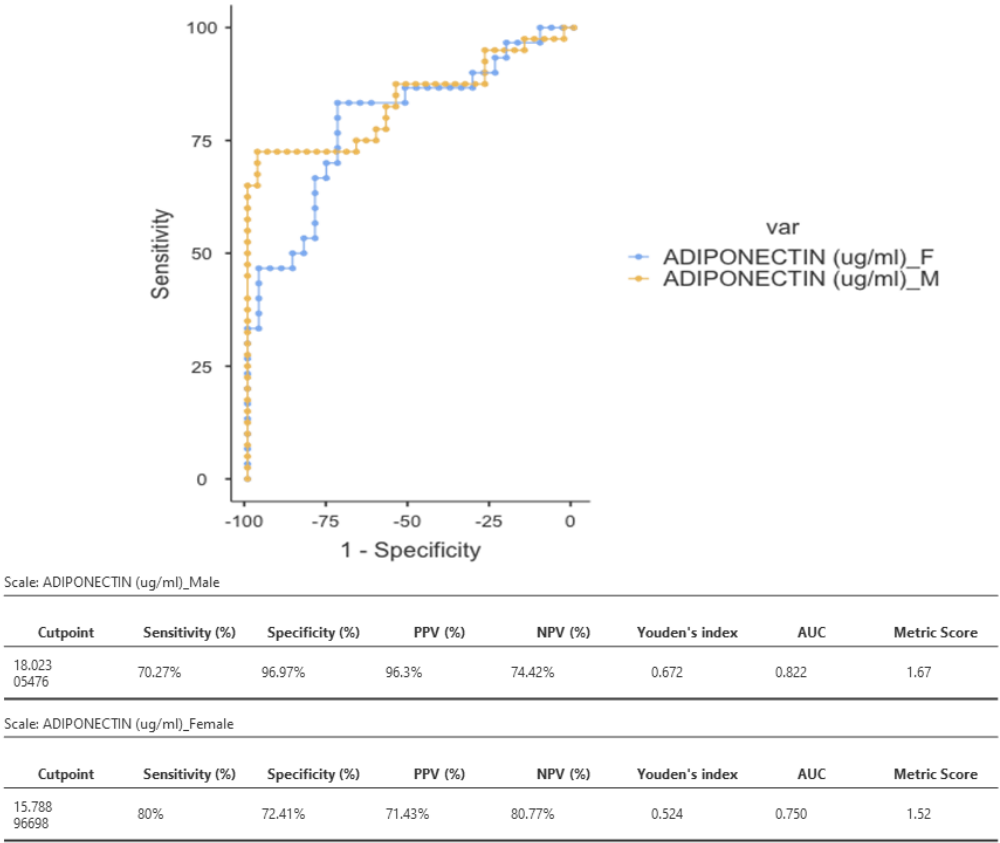
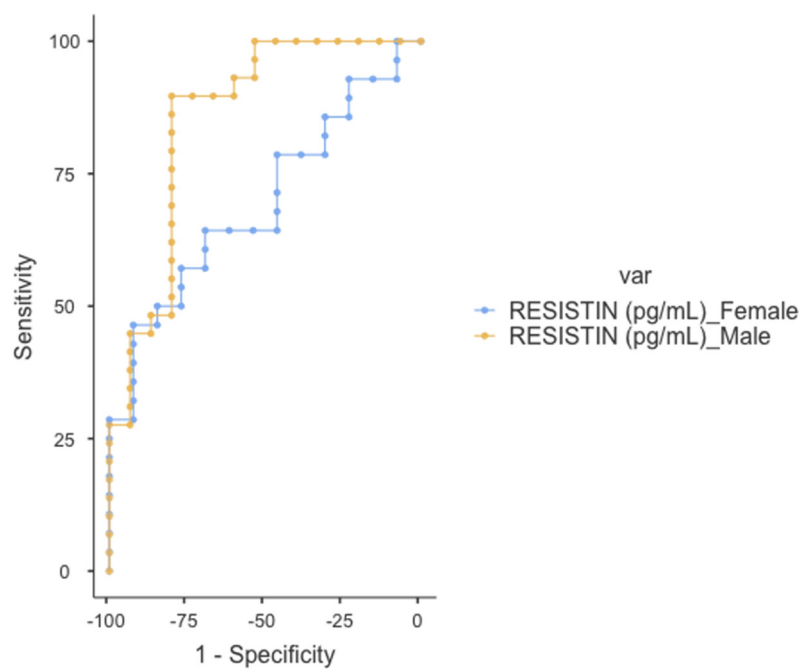


Figure S1



Scale: RESISTIN (pg/mL)\_Male

| Cutpoint | Sensitivity (%) | Specificity (%) | PPV (%) | NPV (%) | Youden's index | AUC   | Metric Score |
|----------|-----------------|-----------------|---------|---------|----------------|-------|--------------|
| 4322.6   | 89.66%          | 80%             | 89.66%  | 80%     | 0.697          | 0.855 | 1.70         |

Scale: RESISTIN (pg/mL)\_Female

| Cutpoint | Sensitivity (%) | Specificity (%) | PPV (%) | NPV (%) | Youden's index | AUC   | Metric Score |
|----------|-----------------|-----------------|---------|---------|----------------|-------|--------------|
| 4838.7   | 57.14%          | 76.92%          | 84.21%  | 45.45%  | 0.341          | 0.695 | 1.34         |

Figure S2