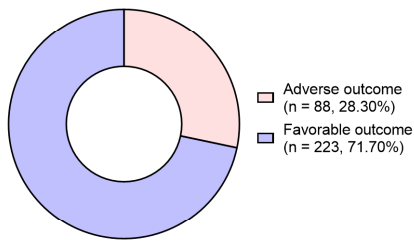
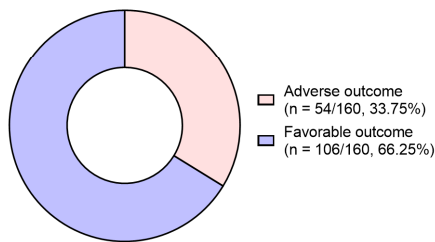


**A**

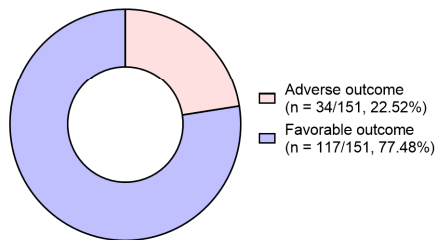
**Proportion of adverse outcomes  
at 10-year follow-up  
after coronary artery bypass graft surgery**



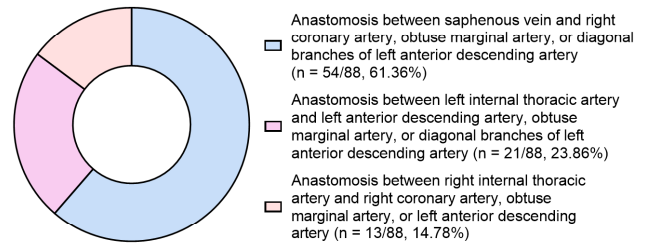
**Proportion of adverse outcomes  
when using saphenous vein conduits**



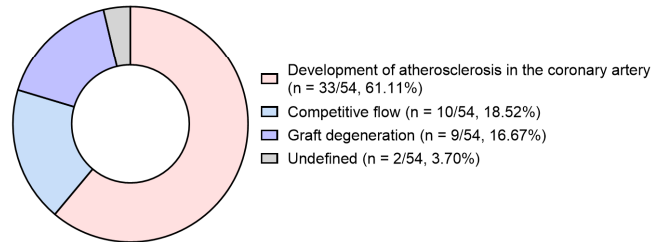
**Proportion of adverse outcomes  
when using internal thoracic artery conduits**

**B**

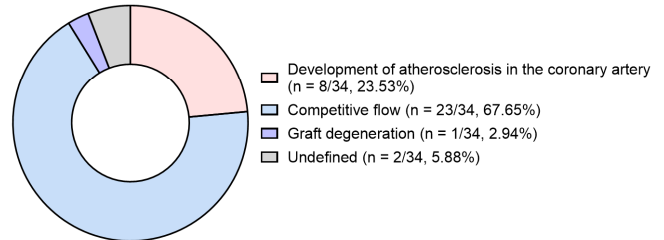
**Relative contributions of saphenous vein and internal thoracic  
artery conduits into bypass dysfunctions (adverse outcomes)**



**Causes of bypass dysfunctions (adverse outcomes)  
when using saphenous vein conduits**



**Causes of bypass dysfunctions (adverse outcomes)  
when using internal thoracic artery conduits**



**Supplementary Figure S4.** Retrospective analysis of repeated coronary angiography performed in 102 patients (n = 311 bypasses) at 10 years of follow-up after coronary artery bypass graft surgery. **(a)** Average proportion of adverse outcomes (top) and proportions of adverse outcomes when using SV conduits (middle) and ITA conduits (bottom); **(b)** Analysis of bypass dysfunctions (i.e., adverse outcomes): relative contributions of SV and ITA conduits into the total number of bypass dysfunctions (top) and causes of bypass dysfunctions when using SV conduits (middle) and ITA conduits (bottom).