

Supplementary Data

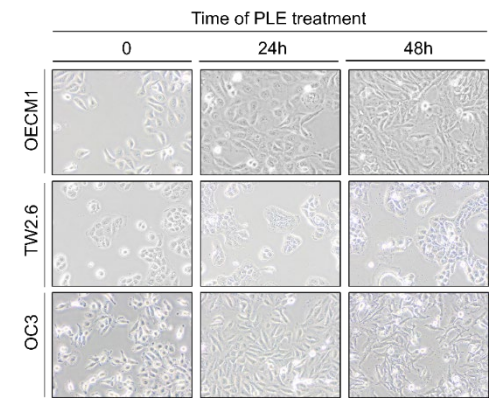


Figure S1. Sensitivity of OSCC to PLE assessed by cell morphology. The representative images of OSCC cell lines before and after 4 mg/mL PLE treatment were taken at indicated times by Olympus CKX53 inverted microscope.

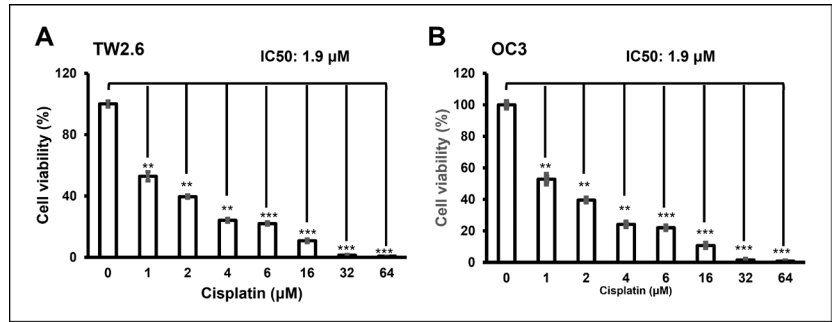


Figure S2. IC₅₀ of cisplatin for TW2.6 and OC3 cells. Cell viability was determined by MTT assay. Data are presented as mean \pm SEM of at least three independent experiments (** $p < 0.01$, *** $p < 0.005$)

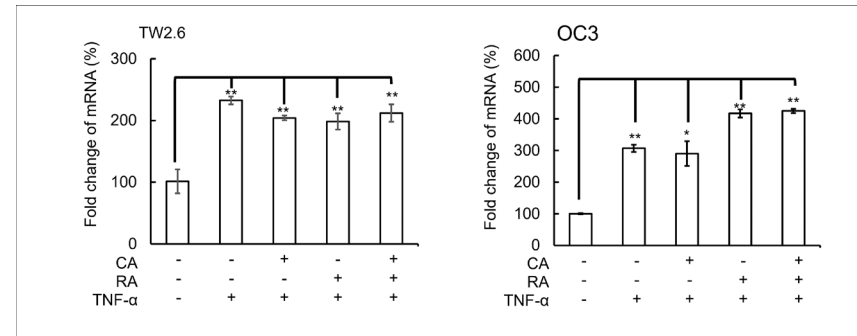


Figure S3. Effect of CA and RA on the expression of IL-1b mRNA. The levels of IL-1b expression were determined by quantitative PCR with TW2.6 and OC3 cells under the conditions as described in Figure 4b. Data are presented as mean \pm SEM of three independent experiments (* $p < 0.05$, ** $p < 0.01$).