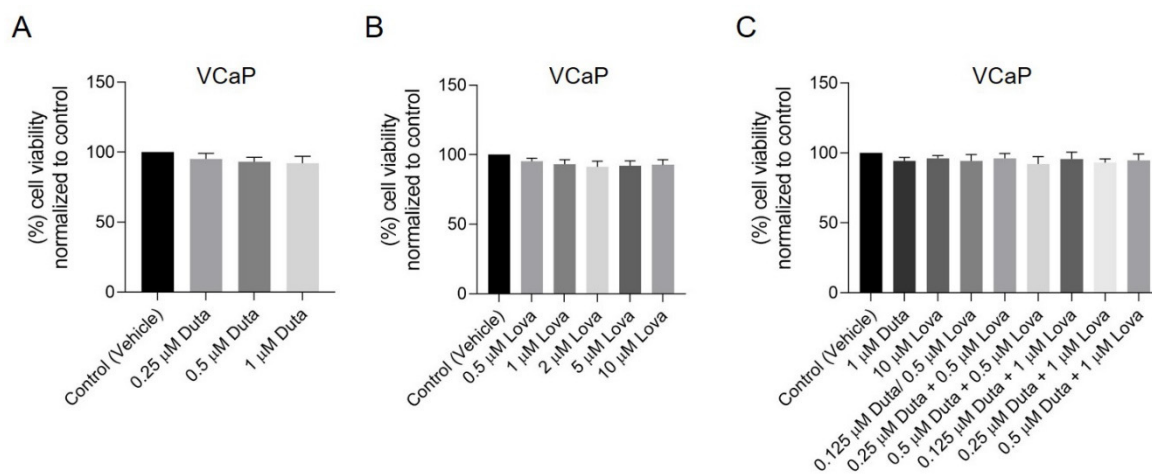
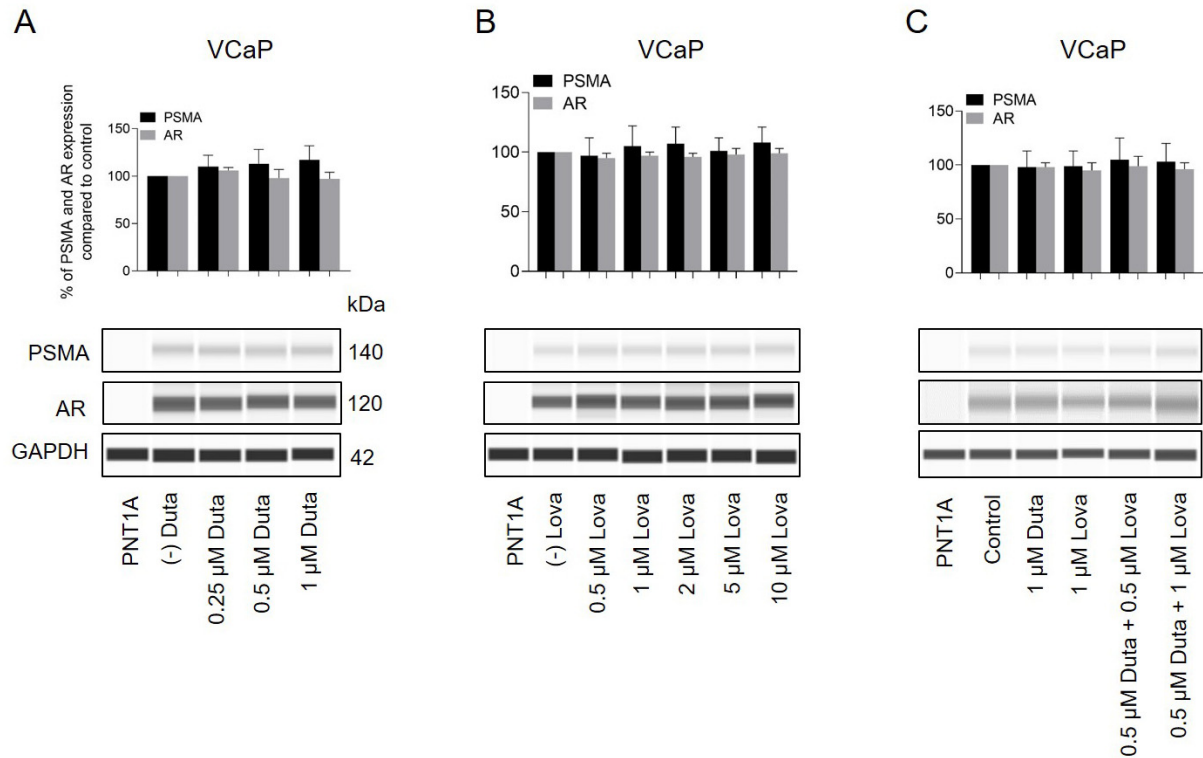


Supplementary figures



Supplementary figure S1. Cell proliferation was assessed by CellTiter-Glo 2.0 assay. VCaP cells were treated for 7 days with vehicle control (0.1% DMSO) or different concentrations of (A) Duta (0.25, 0.5 and 1 μ M), (B) Lova (0.5, 1, 2, 5 and 10 μ M) and (C) Duta + Lova combination (0.125 μ M Duta + 0.5 μ M Lova, 0.25 μ M Duta + 0.5 μ M Lova, 0.5 μ M Duta + 0.5 μ M Lova, 0.125 μ M Duta + 1 μ M Lova, 0.25 μ M Duta + 1 μ M Lova and 0.5 μ M Duta + 1 μ M Lova). The results are presented as percentage of cell viability normalized to control. Data is shown as mean with standard error of the mean (\pm SEM) of three independent experiments. DMSO, dimethyl sulfoxide.



Supplementary Figure S2. Whole PSMA protein expression analyzed by protein simple immunoblotting. VCaP cells were treated for 7 days with different concentrations of (A) Duta (0.25, 0.5 and 1 μ M), (B) Lova (0.5, 1, 2, 5 and 10 μ M) and (C) Duta + Lova combination (0.5 μ M Duta + 0.5 μ M Lova and 0.5 μ M Duta + 1 μ M Lova). Data is shown as mean with standard error of the mean (\pm SEM) of three independent experiments. AR, androgen receptor; PSMA, prostate specific membrane antigen.