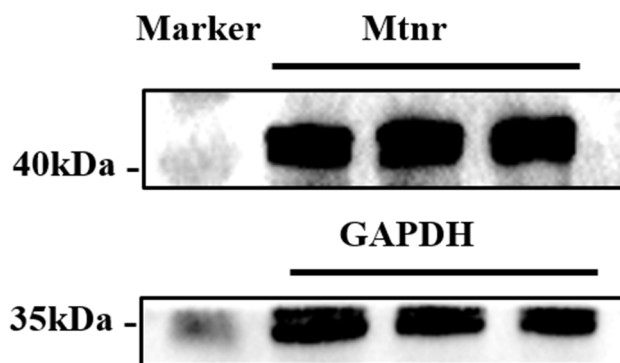


**Table S1.** Composition and nutrient content of experimental diet (air-dry basis).

Item	Content	Item	Content
Metabolic energy (MJ/kg)	11.29	Zinc (mg/kg)	33
Crude protein (%)	16	Calcium (g/kg)	45
Corn powder (g/kg)	403	Manganese (mg/kg)	55
Crushed wheat (g/kg)	250	Available phosphorus (g/kg)	35
Bean cake powder (g/kg)	135	Vitamin A (IU/kg)	4409
Green hay powder (g/kg)	127	Vitamin D3 (IU/kg)	661
Salt (g/kg)	5		



**Figure S1.** Verification of antibody specificity.