

SUPPLEMENTARY INFORMATION

Epidermal loss of RORa enhances skin inflammation in MC903-induced mouse model of atopic dermatitis

Xiangmei Hua,¹ Conrad Dean Blosch,² Hannah Dorsey,¹ Maria K. Ficaró,¹ Nicole L. Wallace,¹ Richard P. Hsung,¹ Jun Dai^{1,3*}

¹ School of Pharmacy, University of Wisconsin-Madison, WI, USA

² Biomedical Research Model Services, University of Wisconsin-Madison, WI, USA

³ UW Carbone Cancer Center, University of Wisconsin-Madison, WI, USA

* Corresponding author:

Jun Dai, PhD

Assistant Professor

The School of Pharmacy

University of Wisconsin, Madison

777 Highland Avenue

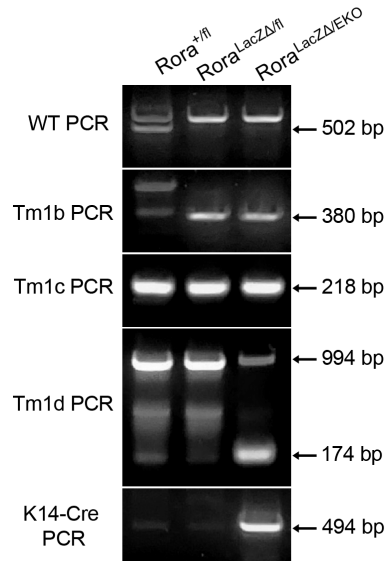
Madison, WI 53705

Tel: 608-292-3196

Email: jdai32@wisc.edu

Supplementary Figure S1

A. Figure 1C



B.

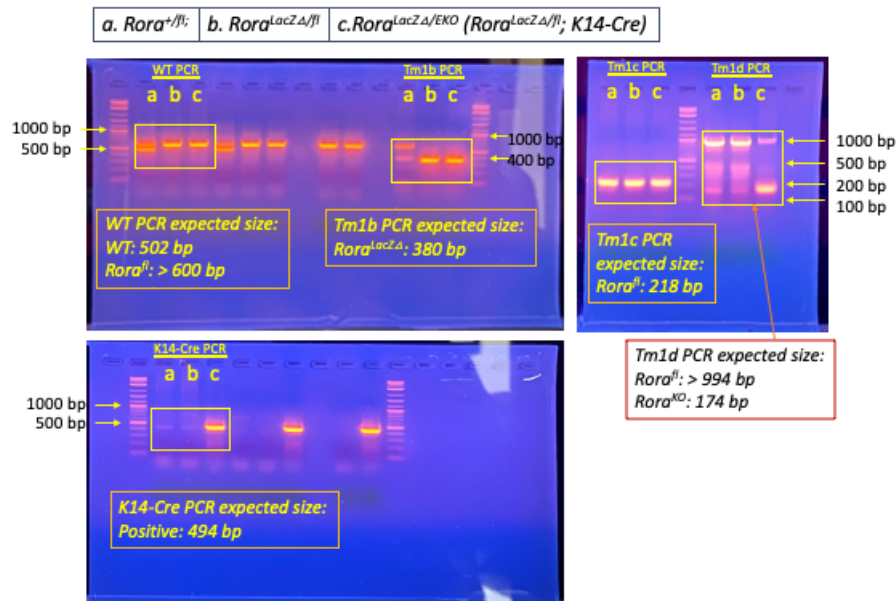
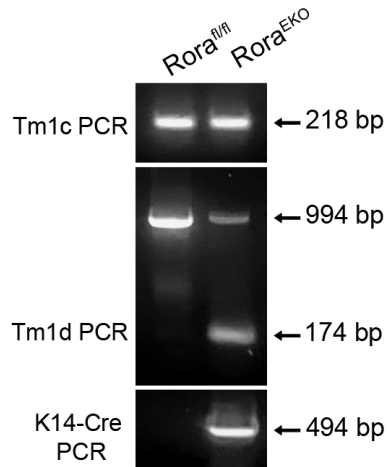


Figure S1. Validation of epidermal *Rora* depletion in *Rora*^{LacZΔ/EKO} mice using short-range end-point PCR assays. (A) Genotyping results are shown in **Figure 1C** in the main text. (B) Original DNA gel images for the images are shown in (A). The PCR products were separated by 2% agarose gels and stained with ethidium bromide.

Supplementary Figure S2

A. Figure 2A



B.

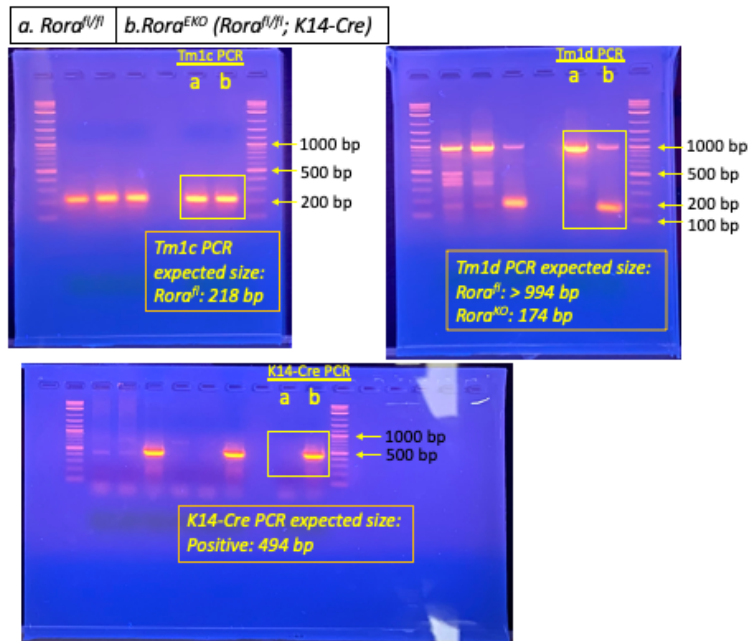
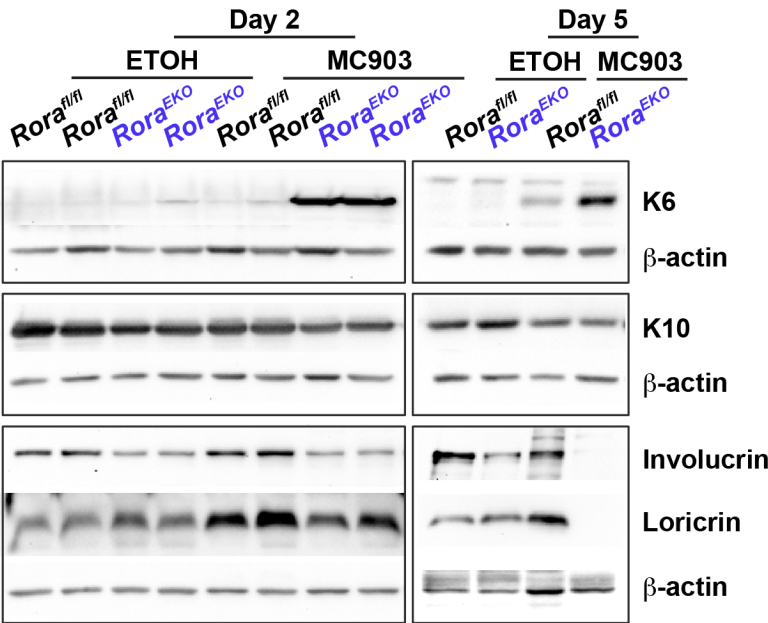


Figure S2. Validation of epidermal *Rora* depletion in *Rora*^{EKO} mice using short-range end-point PCR assays. (A) Genotyping results are shown in **Figure 2A** in the main text. (B) Original DNA gel images for the images are shown in (A). The PCR products were separated by 2% agarose gels and stained with ethidium bromide.

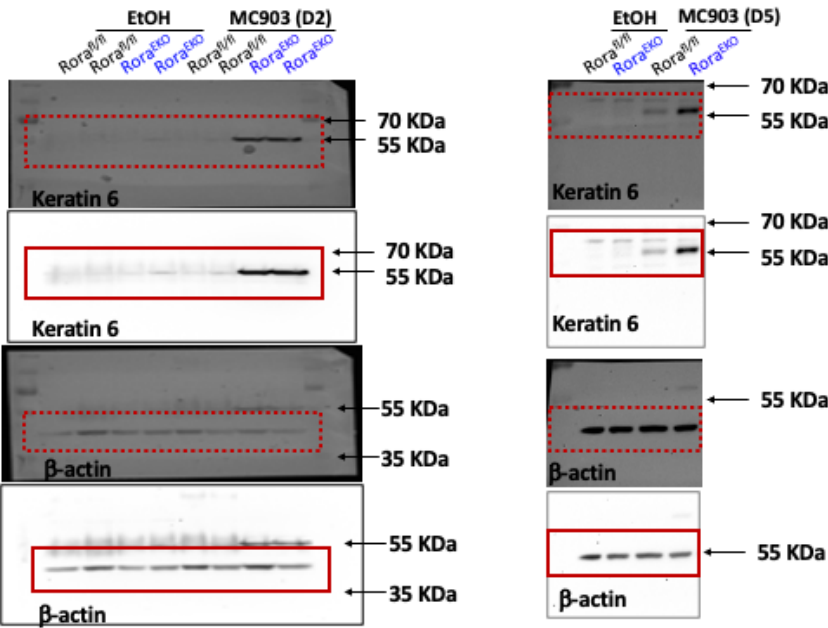
Supplementary Figure S3

A. Figure 6C



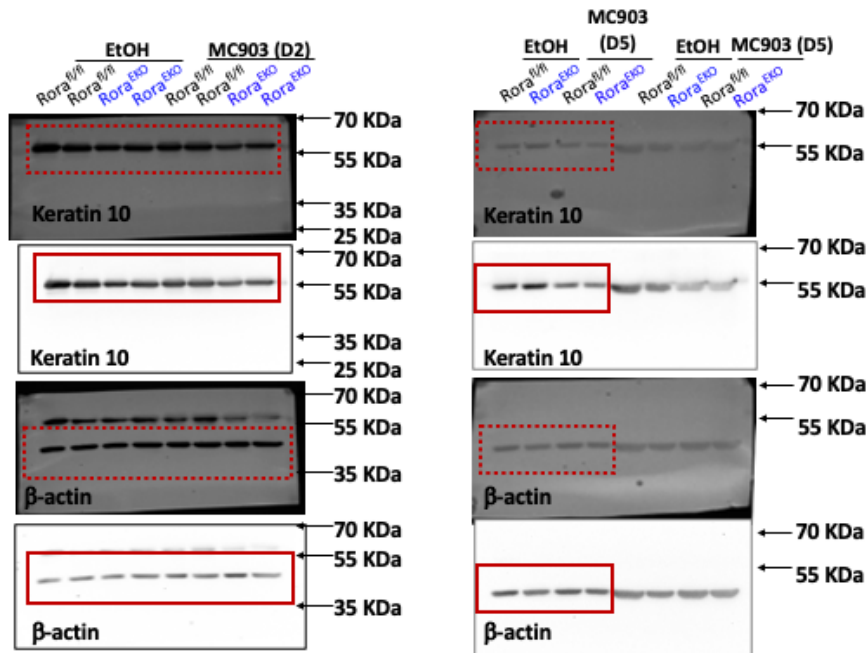
B.

Keratin 6 ; MC903 D2 & D5



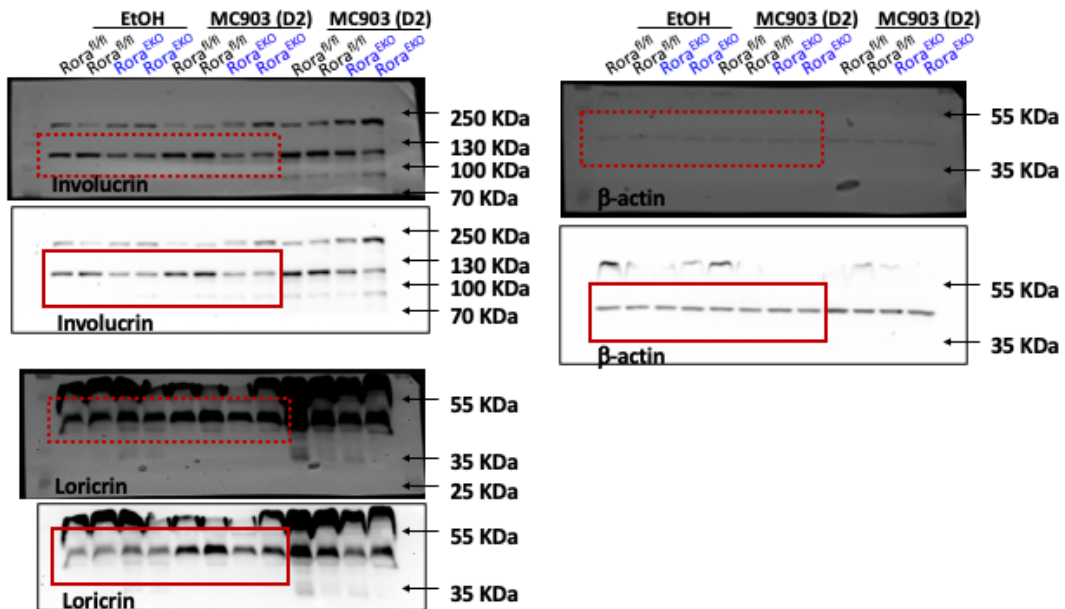
C.

Keratin 10; MC903 D2 & D5



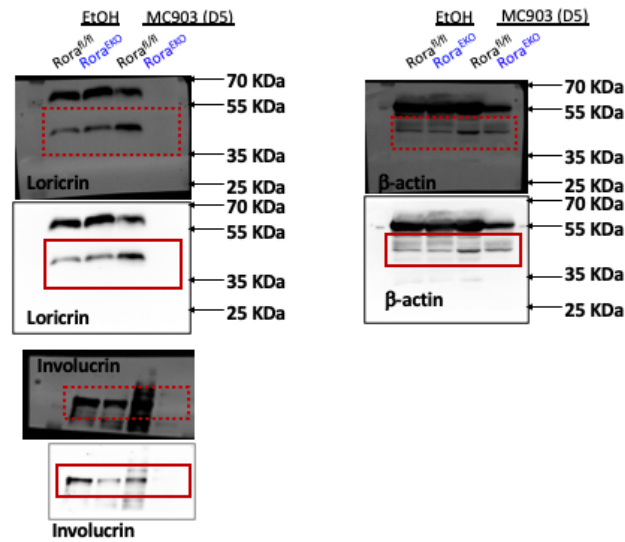
D.

Involucrin & loricrin, MC903 (D2)



E.

Involucrin & loricrin; MC903 (D5)



F.

Additional Involucrin & loricrin gel images; MC903 (D5)
- For densitometry scanning

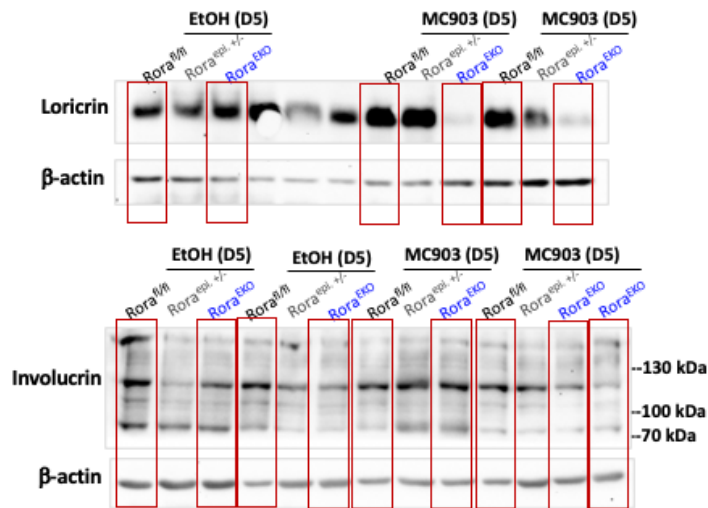


Figure S3. Western blot analysis of indicated proteins in ear samples collected on day 2 after EtOH- or MC903-treatment. (A) Western blot analysis results are shown in **Figure 6C** in the main text. (B-E) Original protein gel images for the images are shown in (A). For each band, the top image shows the membrane overlay and the lower image shows the chemiluminescence signal. (F) Additional gel images used for protein quantification shown in Figure 6D.

Supplementary Table S1

Supplementary Table S1: Primer sequences of mouse genes for RT-PCR and genotyping		
Genes		
Primers for RT-PCR Analysis	Forward	Reverse
<i>Rora</i>	CTCGCTAGAGGTGGTGTATT	GTCTTCACAACCTAGGGACTTG
<i>Il1b</i>	GGCAGGCAGTATCACTCATT	GAGGATGGGCTCTTCTTCAAA
<i>Cxcl2</i>	ATCCAGAGCTTGAGTGTGACGC	AAGGCAAACCTTTTGACCGCC
<i>Cxcl10</i>	GAATCCGGAATCTAAGACCATCAA	GTGCGTGGCTTCACTCCAGT
<i>Krt16</i>	GGTGGCCTCTAACAGTGATCT	TGCATACAGTATCTGCCTTTGG
<i>Tslp</i>	GCTACCCTGAACTGAGAGAAA	TCTGGAGATTGCATGAAGGAATA
<i>Spr2a</i>	GCCTTGTCGTCCTGTCATGT	GGCATTGCTCATAGCACACTAC
<i>Cyp24a1</i>	CTGCCCCATTGACAAAAGGC	CTCACCGTCGGTCATCAGC
PCR primers for genotyping	Forward	Reverse
<i>Rora WT</i>	GAGAAGCTGCTGATCACTACA	CTCTTGTGTATACCACCACA
<i>Tm1b</i>	CGGTCGCTACCATTACCAGT	ACTGATGGCGAGCTCAGACC
<i>Tm1c</i>	AAGGCGCATAACGATAACCAC	CCGCCTACTGCGACTATAGAGA
<i>Tm1d</i>	AAGGCGCATAACGATAACCAC	ACTGATGGCGAGCTCAGACC
<i>K14-CRE</i>	TTCCTCAGGAGTGTCTTCGC	GTCCATGTCCTTCCTGAAGC

Supplementary Table S2

Supplementary Table S2: Primary antibodies used for immunostaining and western blot		
Name	Source	Catalog no.
Loricrin	BioLegend (Covance), Dedham, MA	pRB-145P
F4/80-Biotin	Bio-Rad, Hercules, CA	MCA497
Keratin 10	BioLegend (Covance)	PRB-159P
Keratin 6	BioLegend (Covance)	PRB-169P
TSLP	R&D Systems, Minneapolis, MN	AF555
CD4	BioLegend (Covance)	100446
CD11c	BioLegend (Covance)	117346
β-Actin (13E5)	Cell Signaling Technology, Danvers, MA	4970S