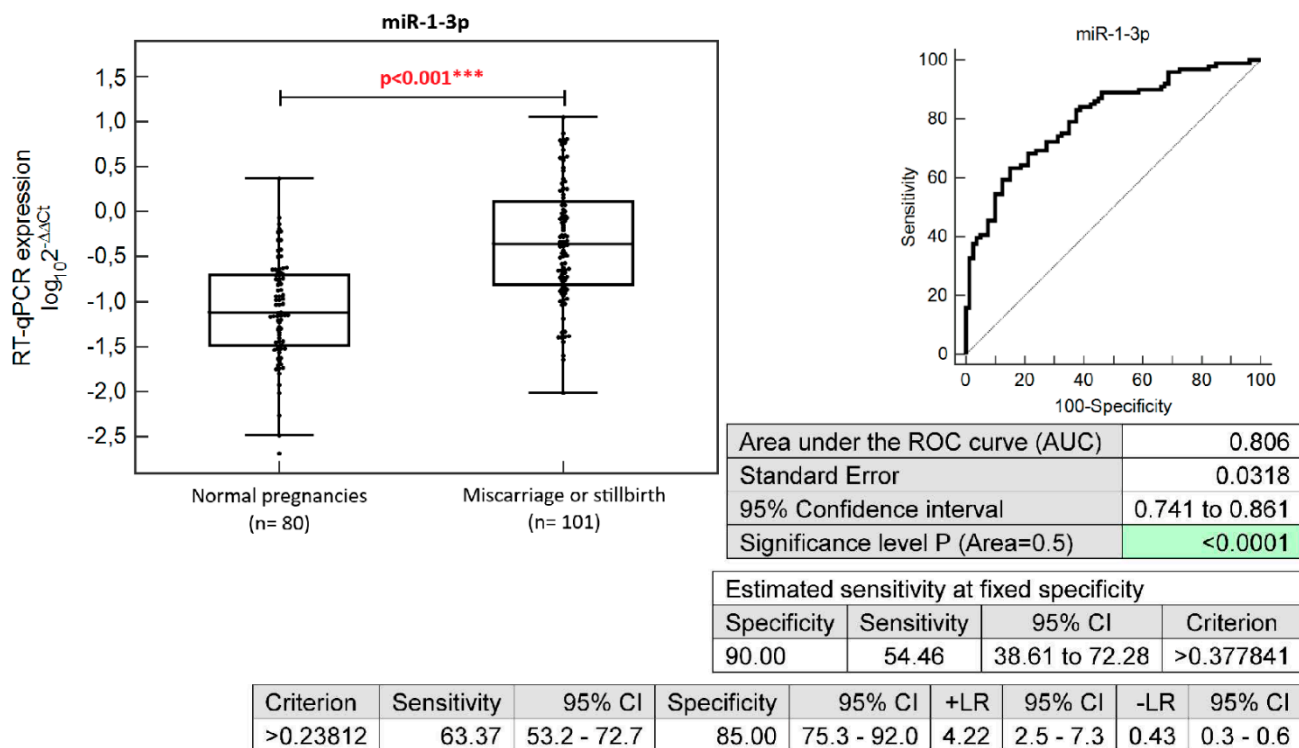
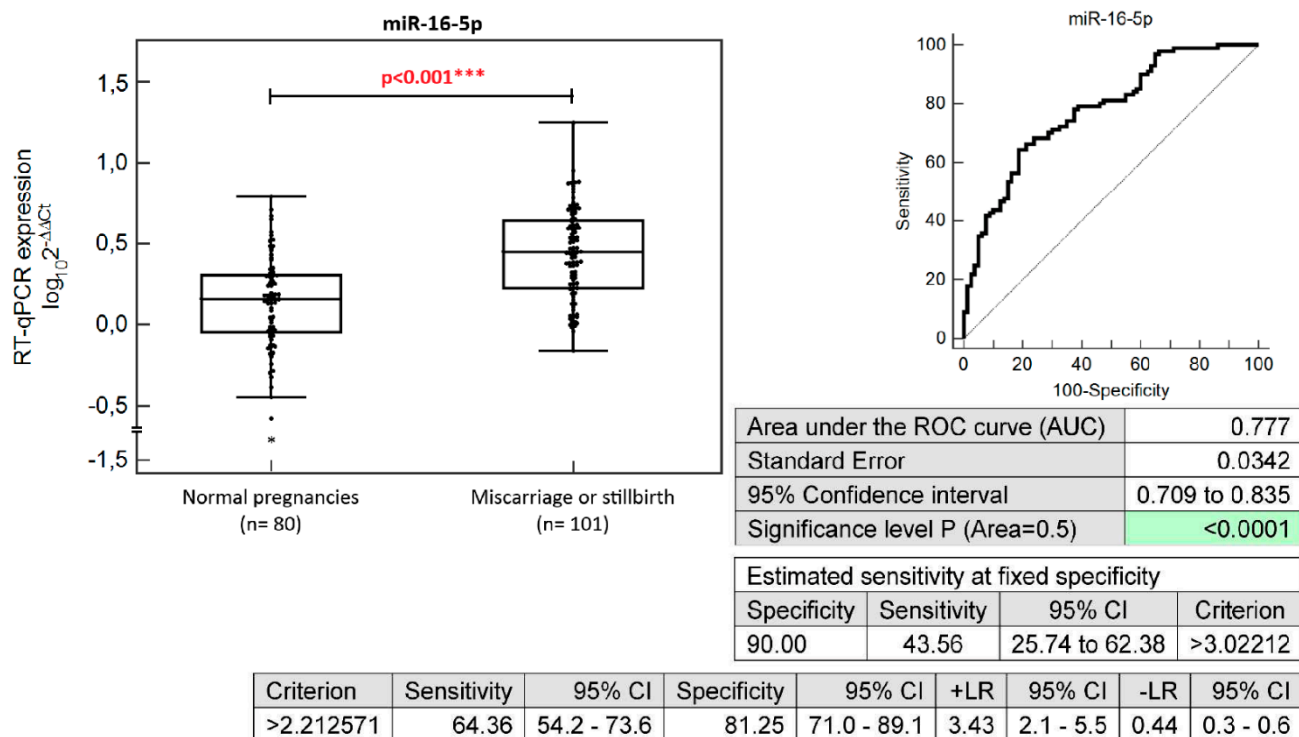


Supplementary Figure S1.

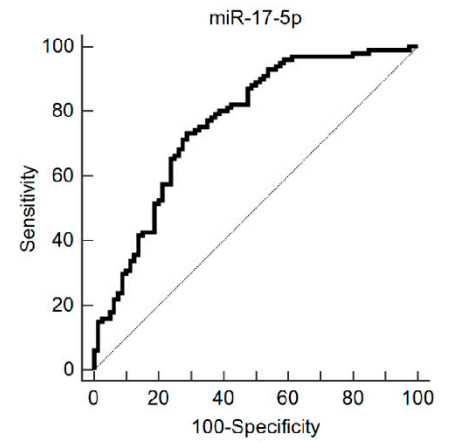
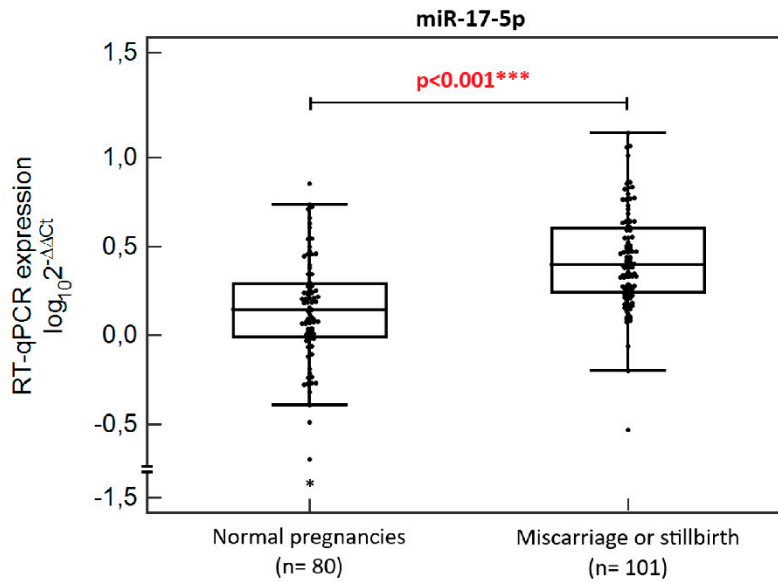
**A**



**B**



C

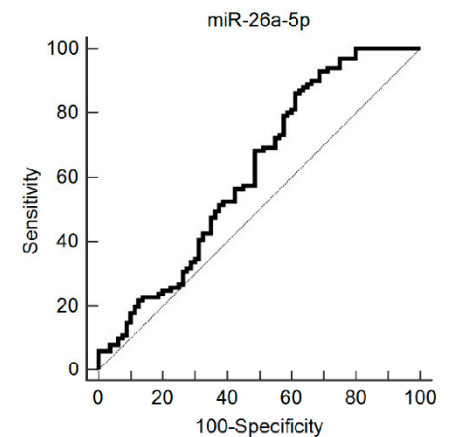
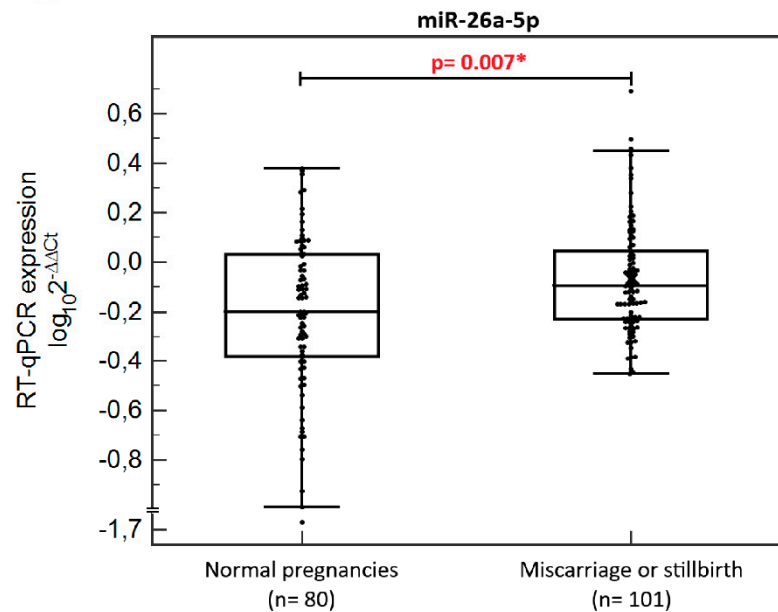


Area under the ROC curve (AUC)	0.766
Standard Error	0.0362
95% Confidence interval	0.698 to 0.826
Significance level P (Area=0.5)	<0.0001

Estimated sensitivity at fixed specificity			
Specificity	Sensitivity	95% CI	Criterion
90.00	30.69	13.86 to 48.51	>3.458809

Criterion	Sensitivity	95% CI	Specificity	95% CI	+LR	95% CI	-LR	95% CI
>1.780378	73.27	63.5 - 81.6	71.25	60.0 - 80.8	2.55	1.8 - 3.7	0.38	0.3 - 0.5

D

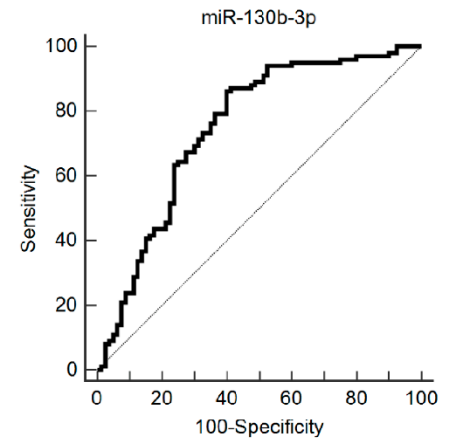
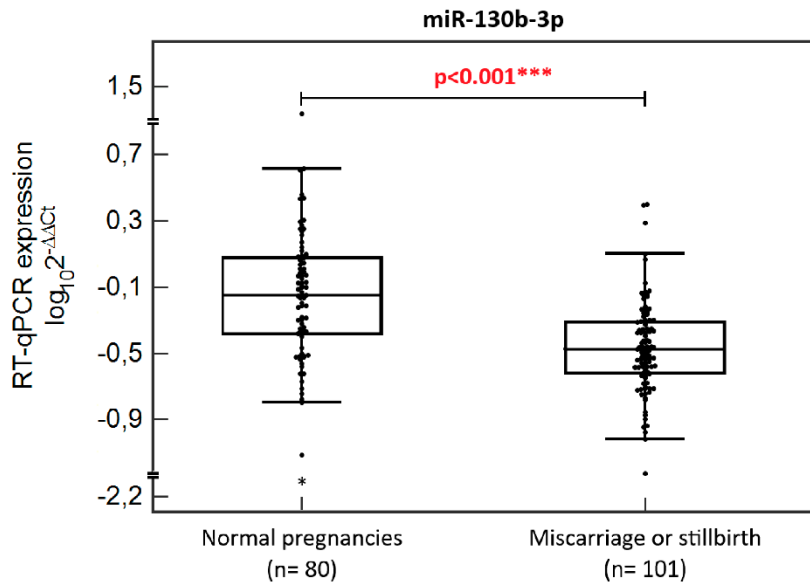


Area under the ROC curve (AUC)	0.617
Standard Error	0.0432
95% Confidence interval	0.542 to 0.688
Significance level P (Area=0.5)	0.0068

Estimated sensitivity at fixed specificity			
Specificity	Sensitivity	95% CI	Criterion
90.00	17.82	6.93 to 28.76	>1.350228

Criterion	Sensitivity	95% CI	Specificity	95% CI	+LR	95% CI	-LR	95% CI
>0.525138	86.14	77.8 - 92.2	38.75	28.1 - 50.3	1.41	1.2 - 1.7	0.36	0.2 - 0.6

**E**

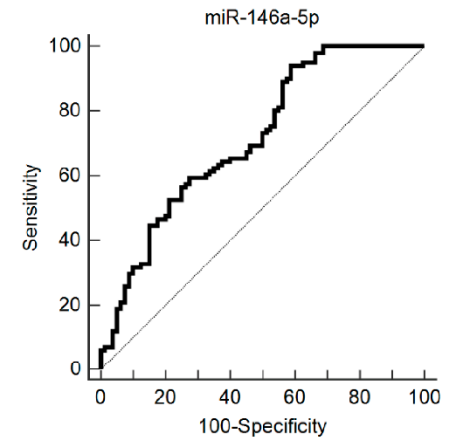
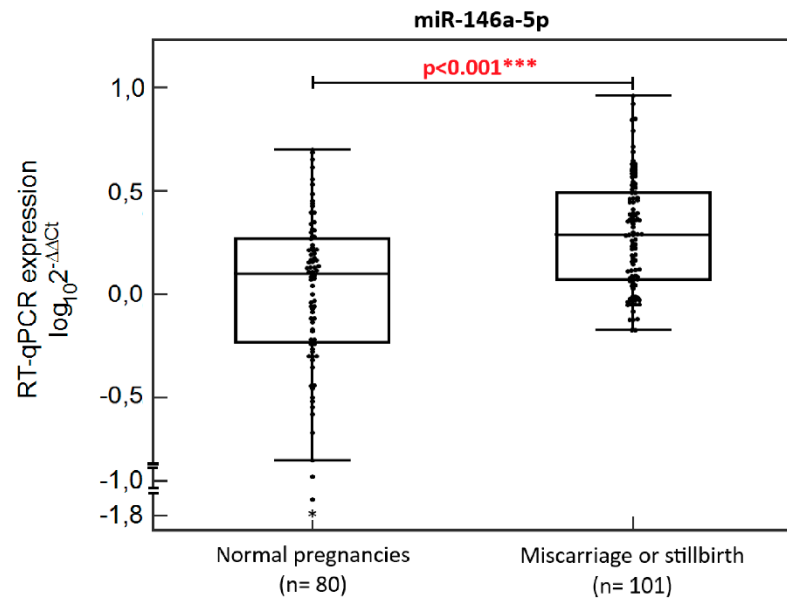


Area under the ROC curve (AUC)	0.749
Standard Error	0.0383
95% Confidence interval	0.679 to 0.810
Significance level P (Area=0.5)	<0.0001

Estimated sensitivity at fixed specificity			
Specificity	Sensitivity	95% CI	Criterion
90.00	23.76	6.93 to 42.35	≤0.235772

Criterion	Sensitivity	95% CI	Specificity	95% CI	+LR	95% CI	-LR	95% CI
≤0.591670738	86.14	77.8 - 92.2	60.00	48.4 - 70.8	2.15	1.6 - 2.8	0.23	0.1 - 0.4

**F**

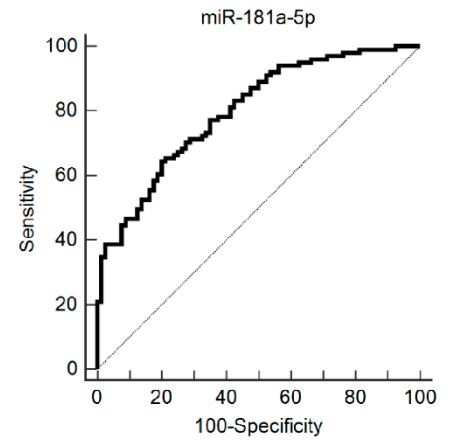
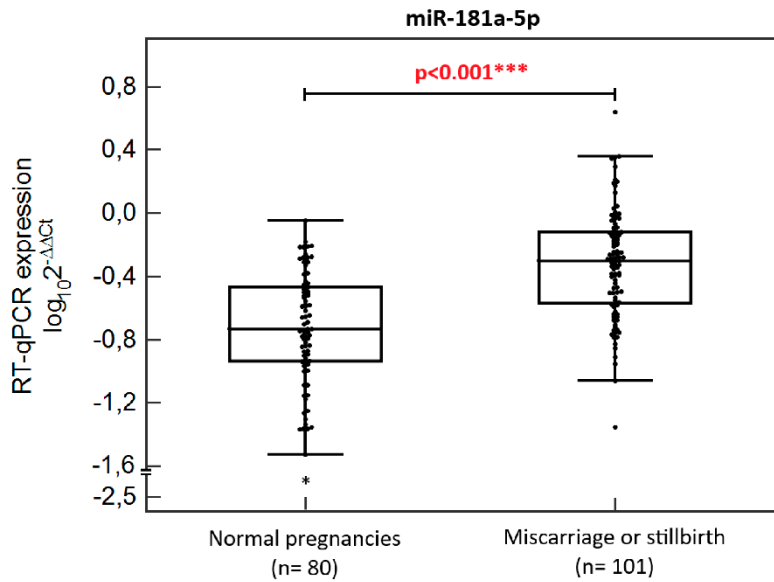


Area under the ROC curve (AUC)	0.717
Standard Error	0.0385
95% Confidence interval	0.645 to 0.781
Significance level P (Area=0.5)	<0.0001

Estimated sensitivity at fixed specificity			
Specificity	Sensitivity	95% CI	Criterion
90.00	31.68	16.83 to 52.48	>2.744534

Criterion	Sensitivity	95% CI	Specificity	95% CI	+LR	95% CI	-LR	95% CI
>0.879161	94.06	87.5 - 97.8	41.25	30.4 - 52.8	1.60	1.3 - 1.9	0.14	0.06 - 0.3

G

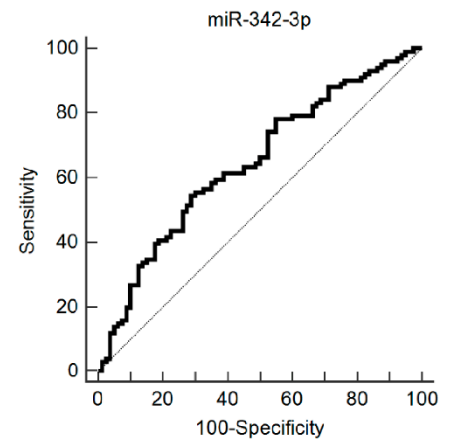
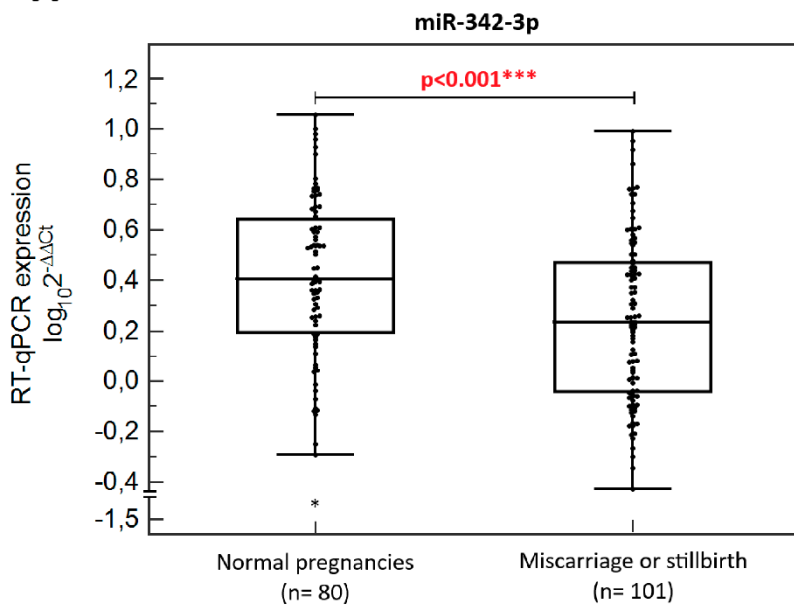


Area under the ROC curve (AUC)	0.799
Standard Error	0.0321
95% Confidence interval	0.734 to 0.855
Significance level P (Area=0.5)	<0.0001

Estimated sensitivity at fixed specificity			
Specificity	Sensitivity	95% CI	Criterion
90.00	46.53	32.67 to 61.52	>0.521629

Criterion	Sensitivity	95% CI	Specificity	95% CI	+LR	95% CI	-LR	95% CI
>0.368016	64.36	54.2 - 73.6	80.00	69.6 - 88.1	3.22	2.0 - 5.1	0.45	0.3 - 0.6

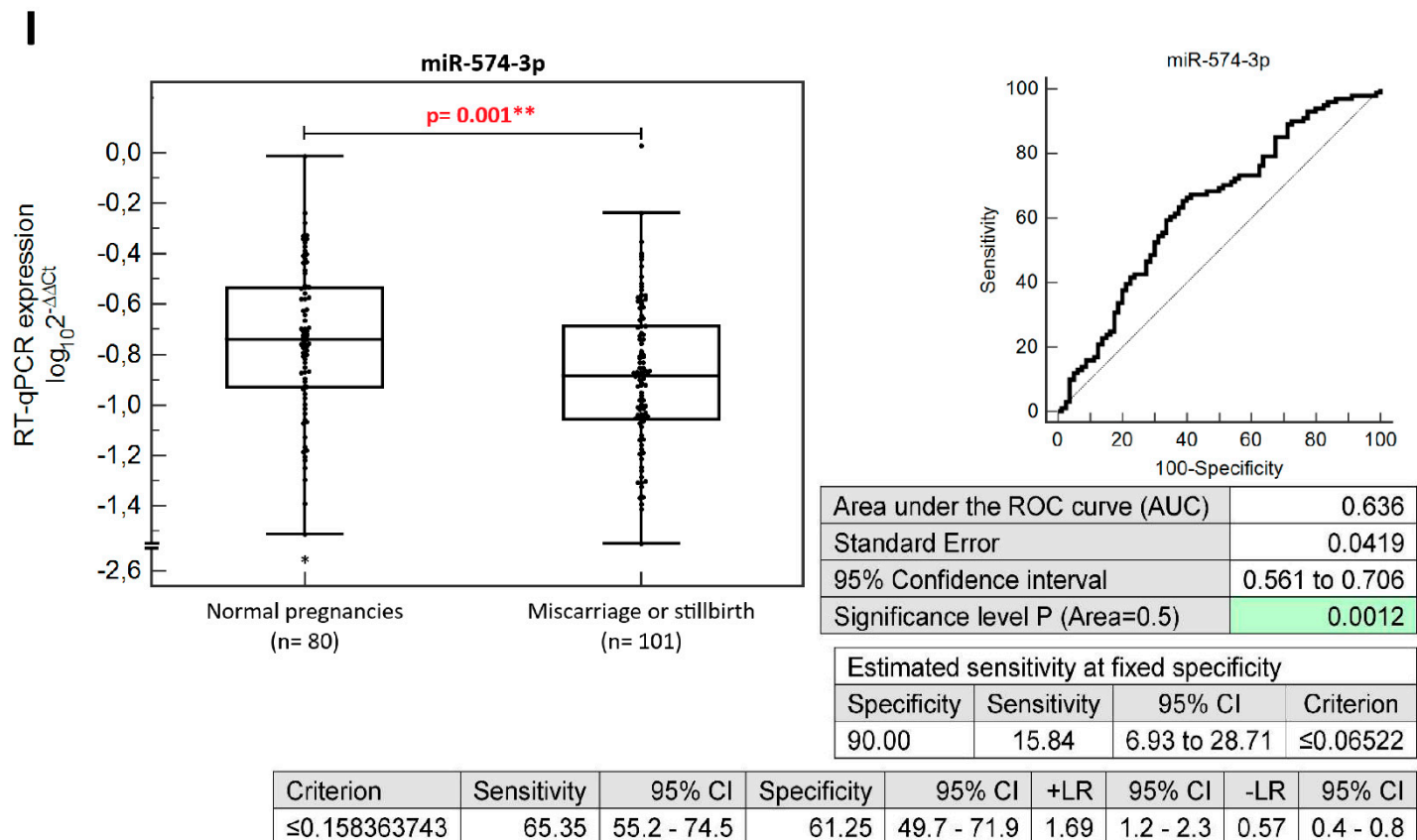
H



Area under the ROC curve (AUC)	0.645
Standard Error	0.0412
95% Confidence interval	0.571 to 0.715
Significance level P (Area=0.5)	0.0004

Estimated sensitivity at fixed specificity			
Specificity	Sensitivity	95% CI	Criterion
90.00	26.73	11.84 to 45.54	≤0.909153316

Criterion	Sensitivity	95% CI	Specificity	95% CI	+LR	95% CI	-LR	95% CI
≤1.797163562	54.46	44.2 - 64.4	71.25	60.0 - 80.8	1.89	1.3 - 2.8	0.64	0.5 - 0.8



**Supplementary Figure S1.** Up-regulation of miR-1-3p (A), miR-16-5p (B), miR-17-5p (C), miR-26a-5p (D), miR-146a-5p (F), and miR-181a-5p (G) and down-regulation of miR-130b-3p (E), miR-342-3p (H), and miR-574-3p (I) differentiates in early stages of gestation between normal term pregnancies and pregnancies with subsequent miscarriage or stillbirth.

(results after the Benjamini-Hochberg correction are marked by \* for  $\alpha=0.05$ , \*\* for  $\alpha=0.01$ , and \*\*\* for  $\alpha=0.001$ )

