

Supplementary File S3
Individual results of the automatic analysis of SWDs

Table S3.1. Information about rat subjects used in the control and the experimental groups

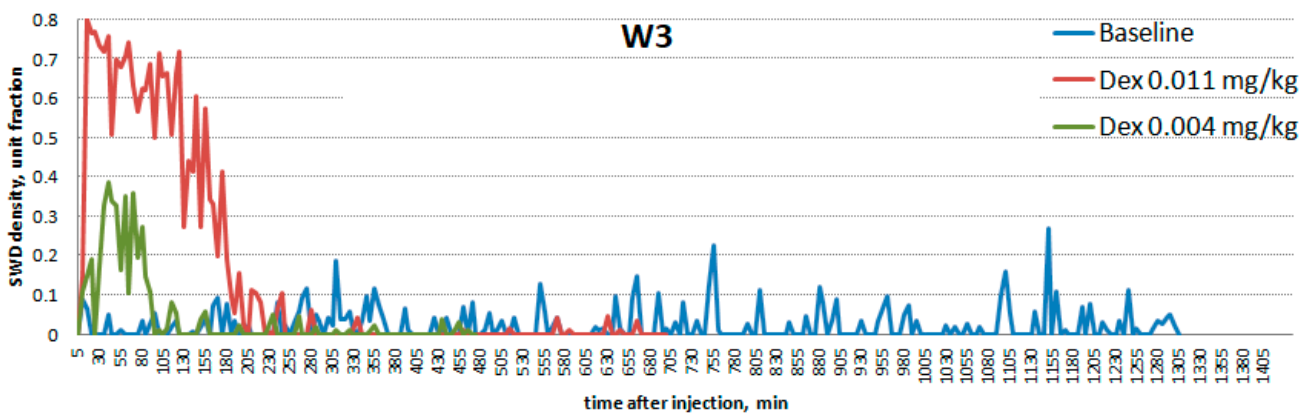
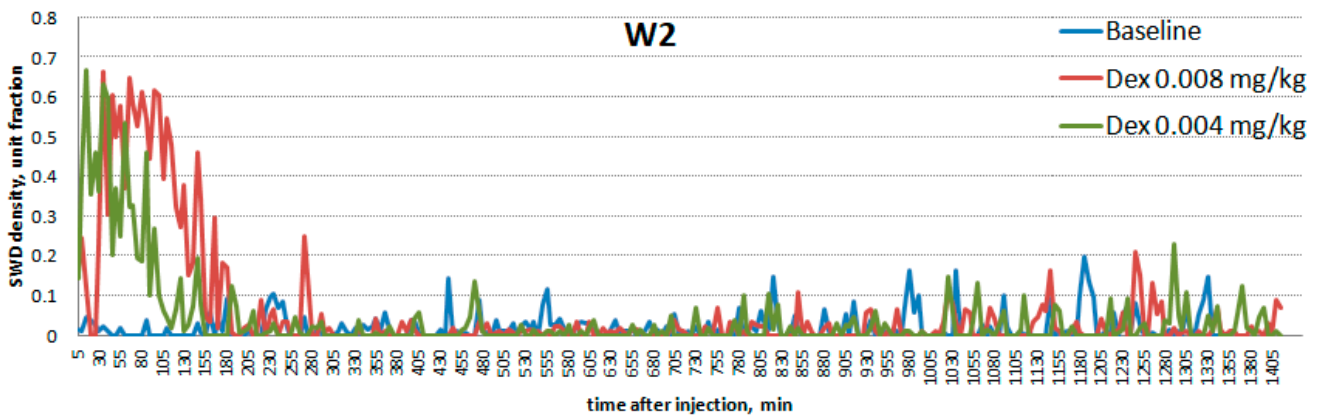
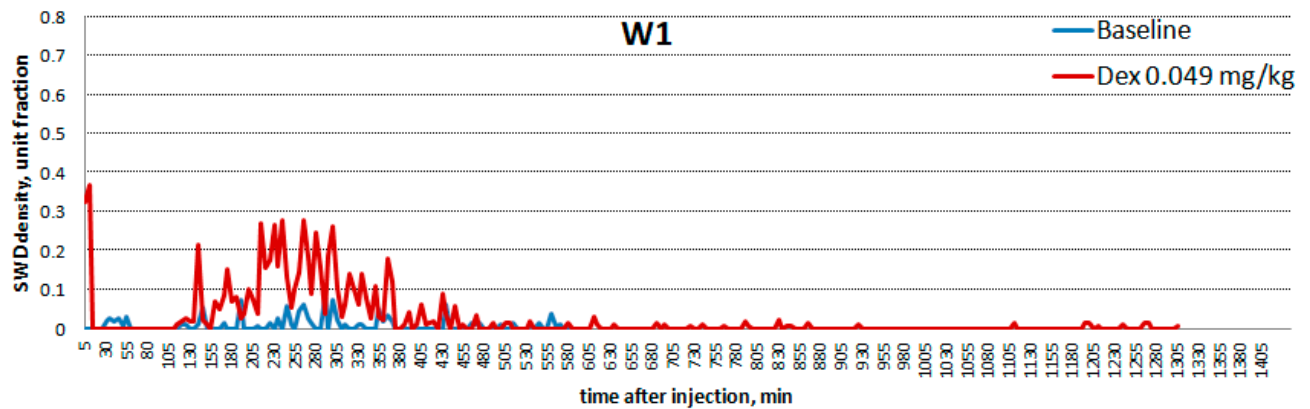
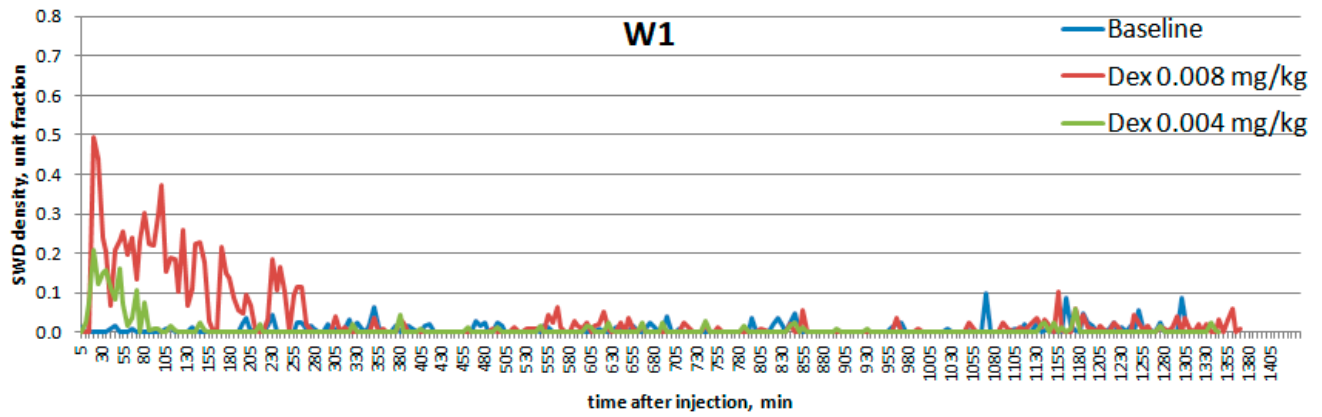
Strain	N of subjects	Sex	Body weight, g	IDs
Non-epileptic, control				
NEW	5	males	355-446	M1, M3-M6
	8	females	230-253	F1-F8
Total	13			
Epileptic phenotype (spontaneous SWDs in baseline)				
WAG/Rij	2	males	356-367	W11, W12
	9	females	226-357	W1-W8, W10
Wistar	1	female	273-275	W9
NEW	1	male	400	M2
Total	13			

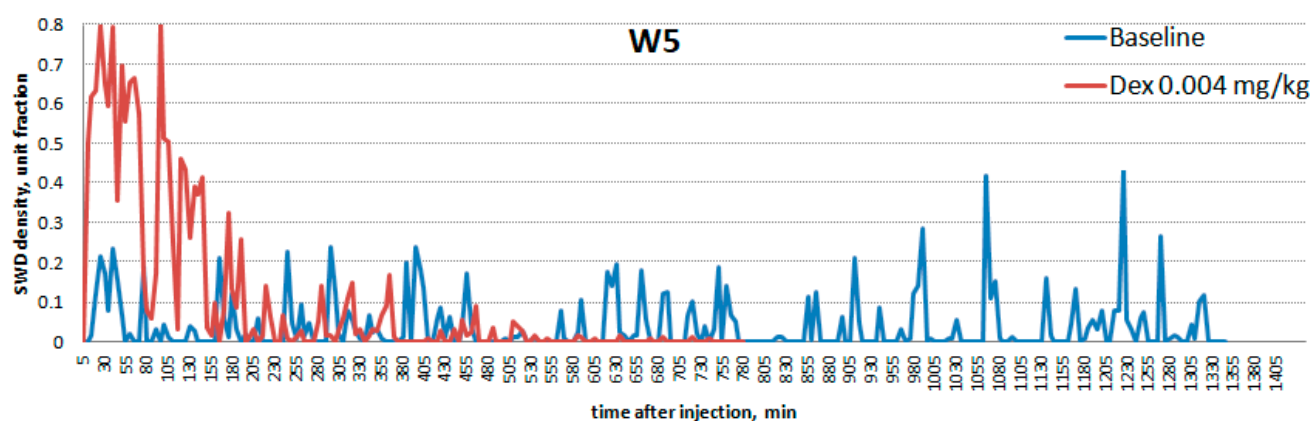
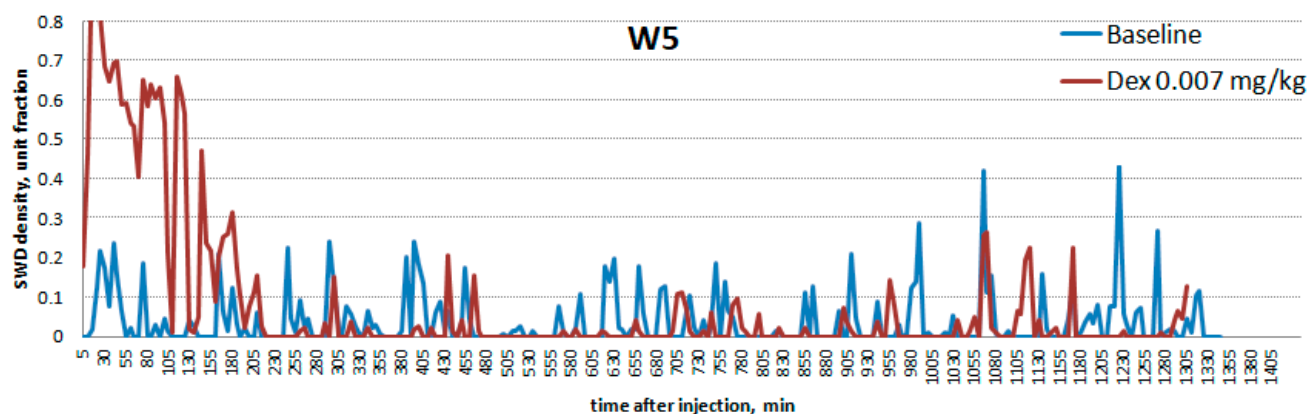
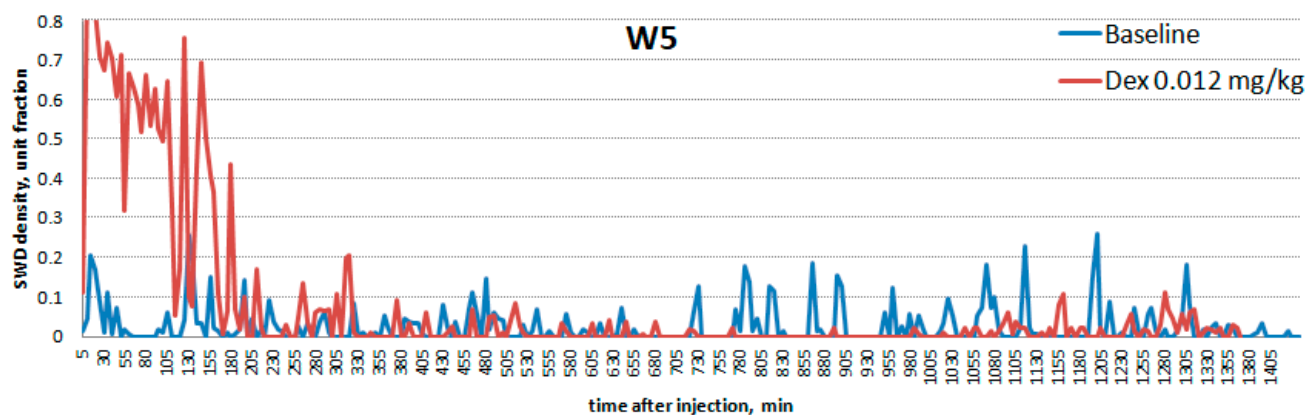
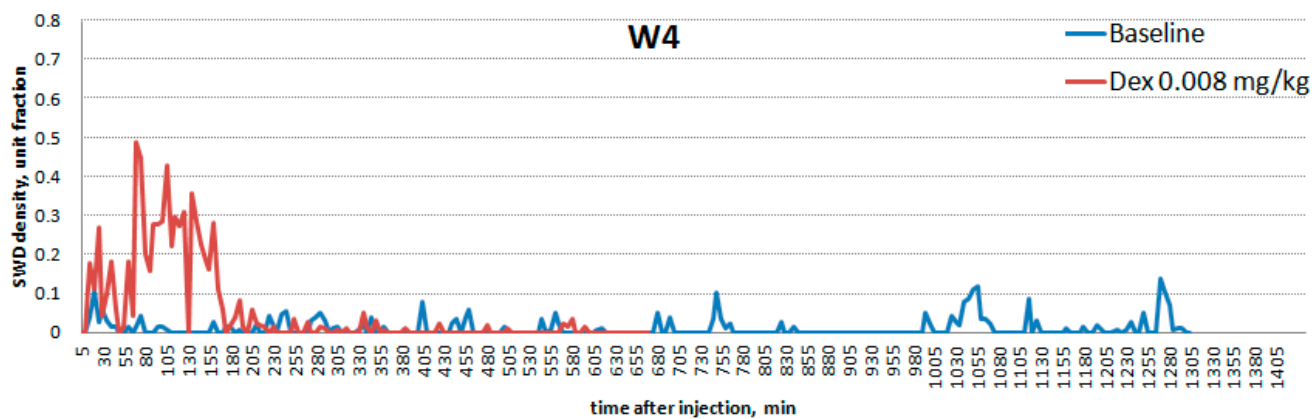
*- Non-epileptic subjects F4 and F5 exhibited the genuine SWDs after Dex injections (the latent form of epilepsy).

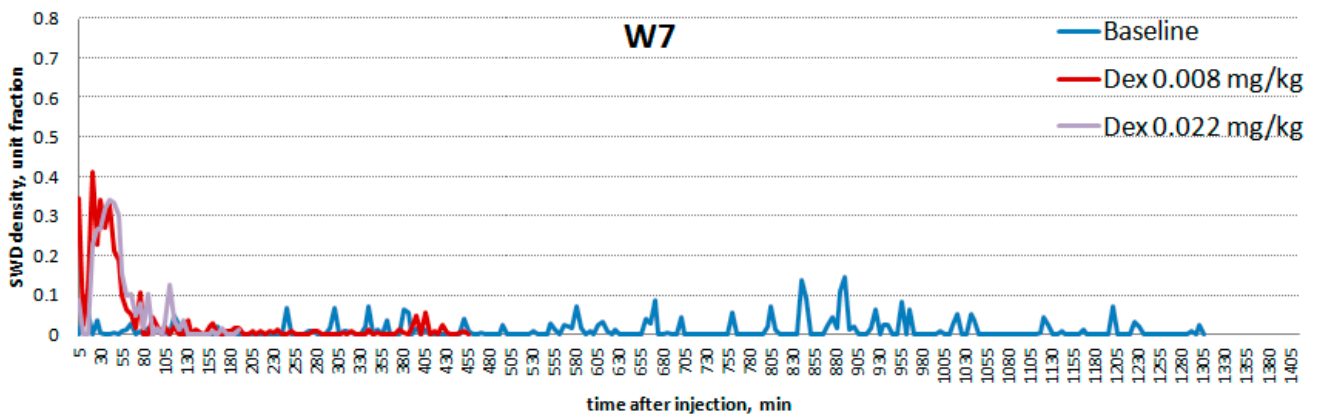
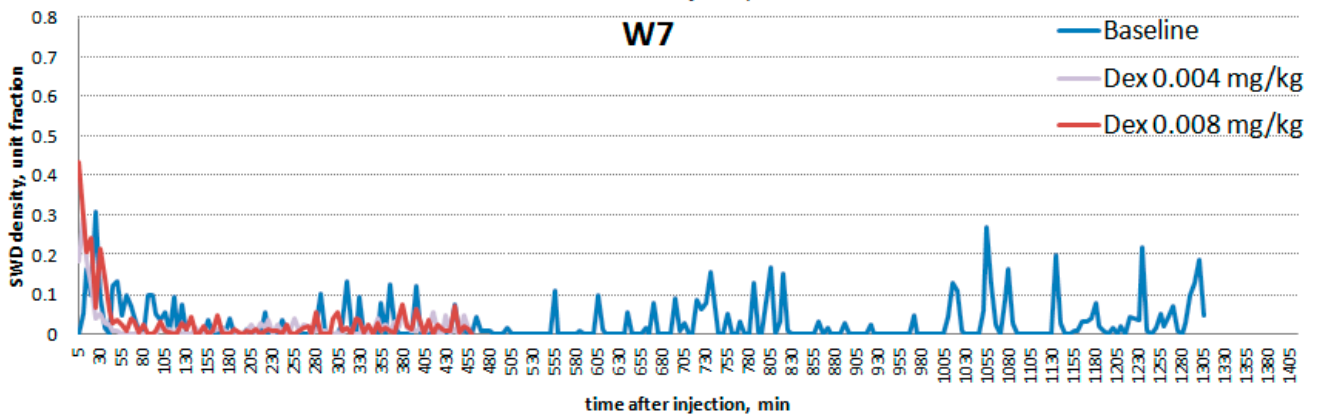
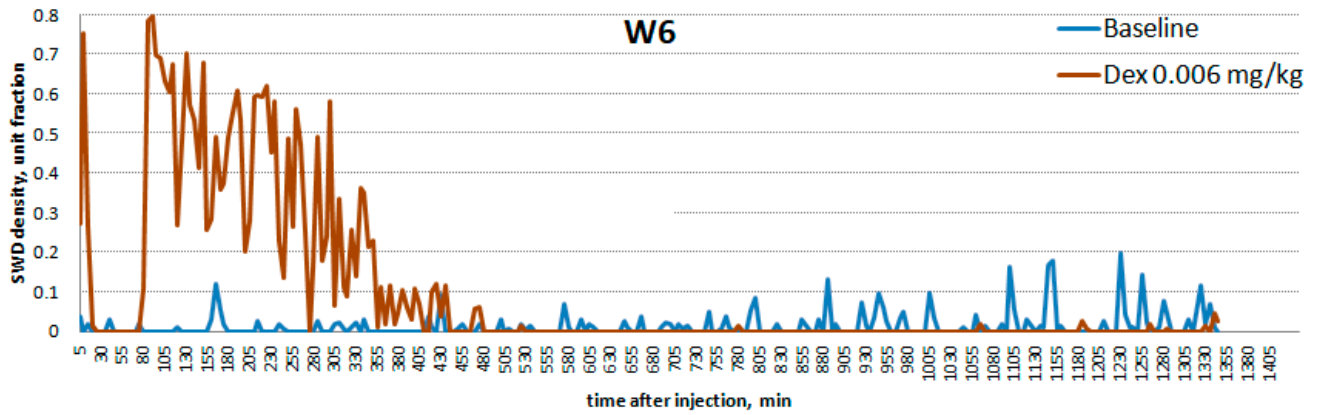
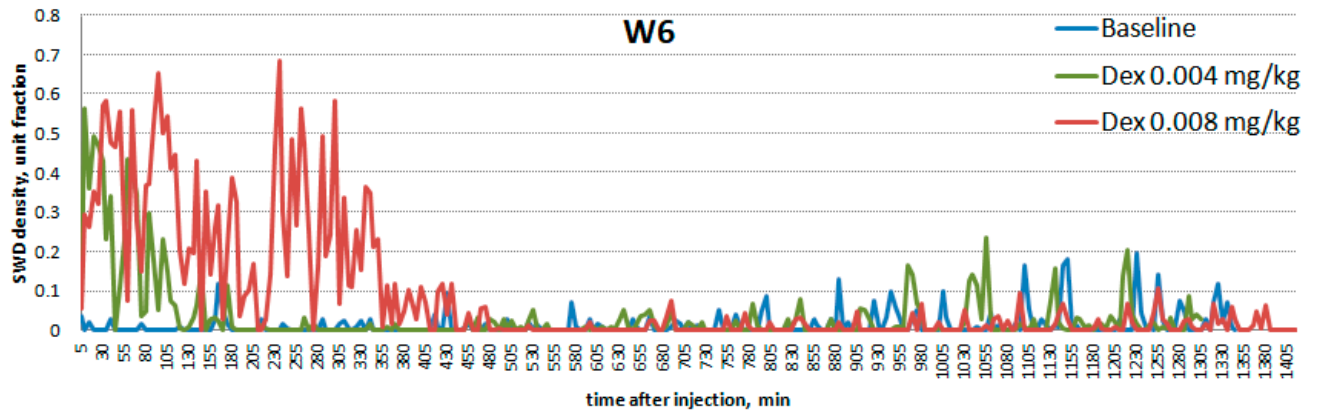
Table S3.2. Results of cluster analysis of the epileptic group (13 rats)

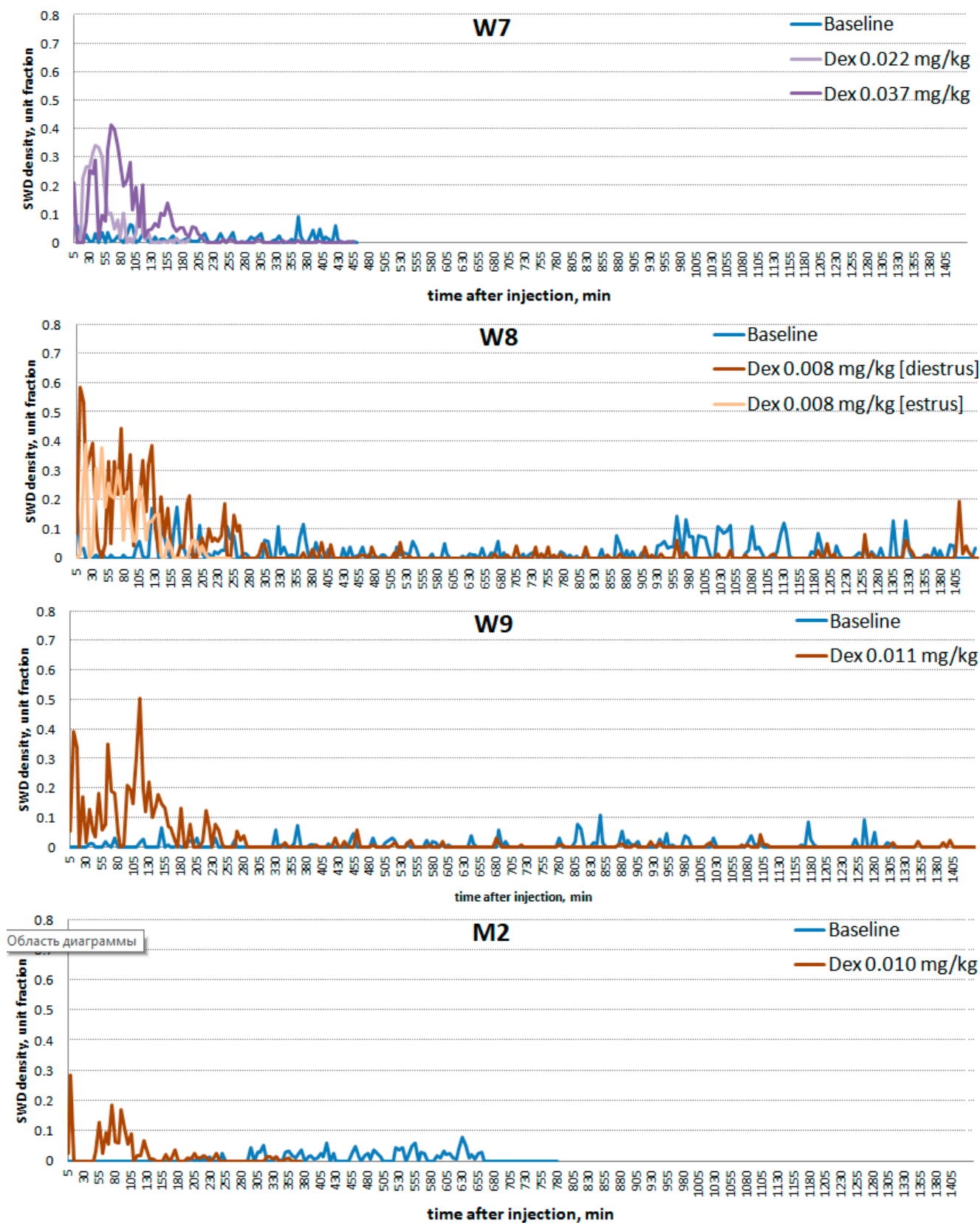
Cluster 1		Cluster 2		Cluster 3		Cluster 4	
Low/no effect		Pro-epileptic effect		Severe absence (Epi-status, early)		Severe absence (Epi-status, late)	
ID	Dex dose	ID	Dex dose	ID	Dex dose	ID	Dex dose
W1	0.049	W1	0.007	W3	0.011	W6	0.004
W1	0.004	W2	0.004	W5	0.012	W6	0.008
W7	0.007	W4	0.008	W5	0.007		
W7	0.011	W5	0.003				
W7	0.012	W7	0.037				
W7	0.003	W9	0.011				
W8	0.008	W10	0.012				
W11	0.014	W6	0.004				
W12	0.014	W2	0.008				
W3	0.003						
M2	0.010						
Average							

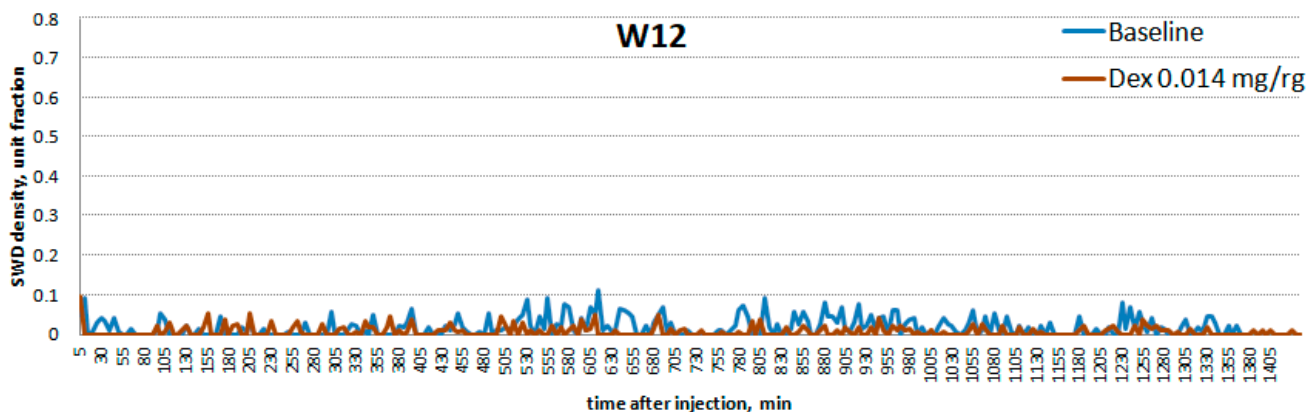
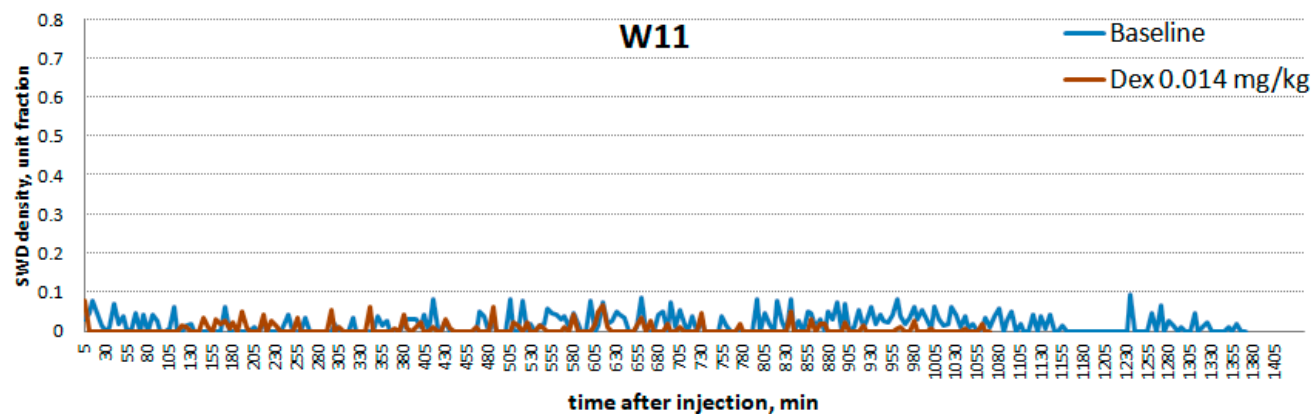
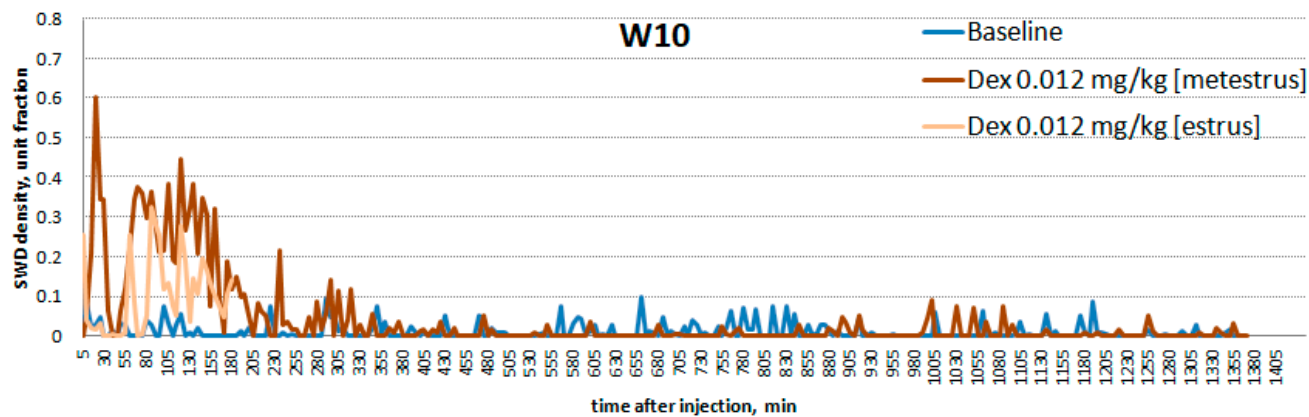
The following plots demonstrate density of SWDs after dexmedetomidine injections in different doses and during baseline. Density of SWDs was computed in s with 5 min bin



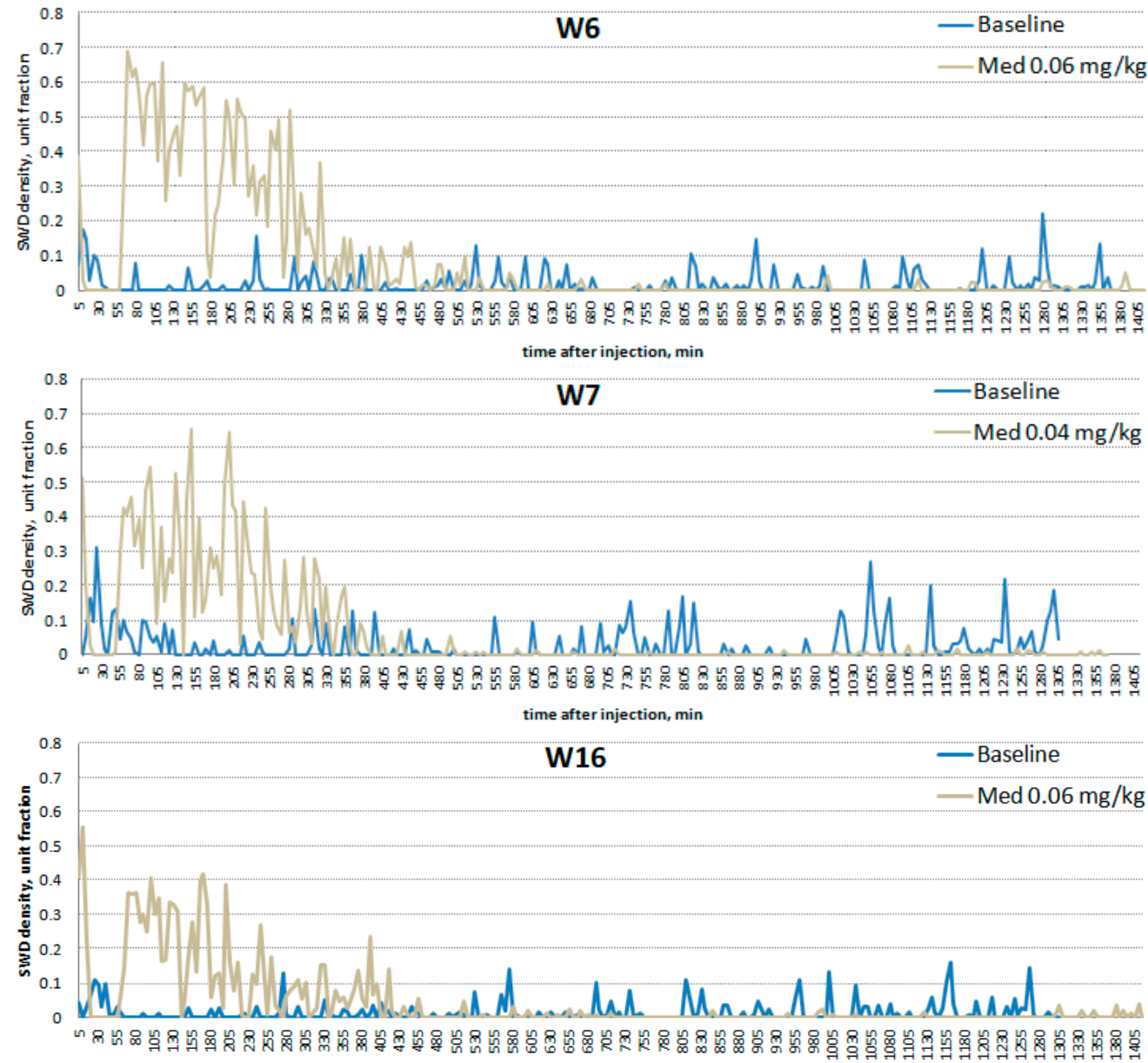




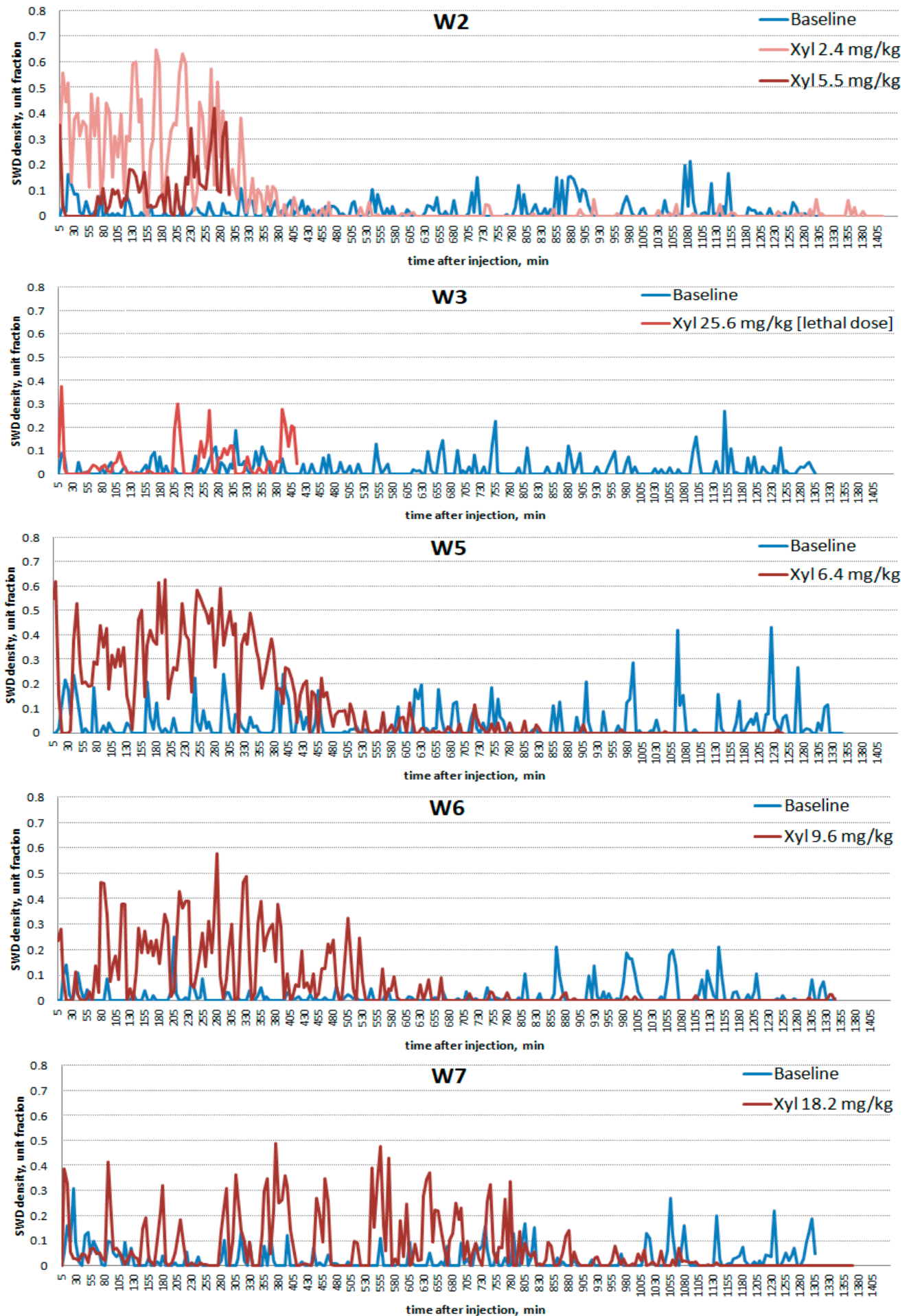




Part 2. Medetomidine injections



Part 3. Xylazine injections



Part 4. Terazazine administration (per os)

