

Supplemental materials

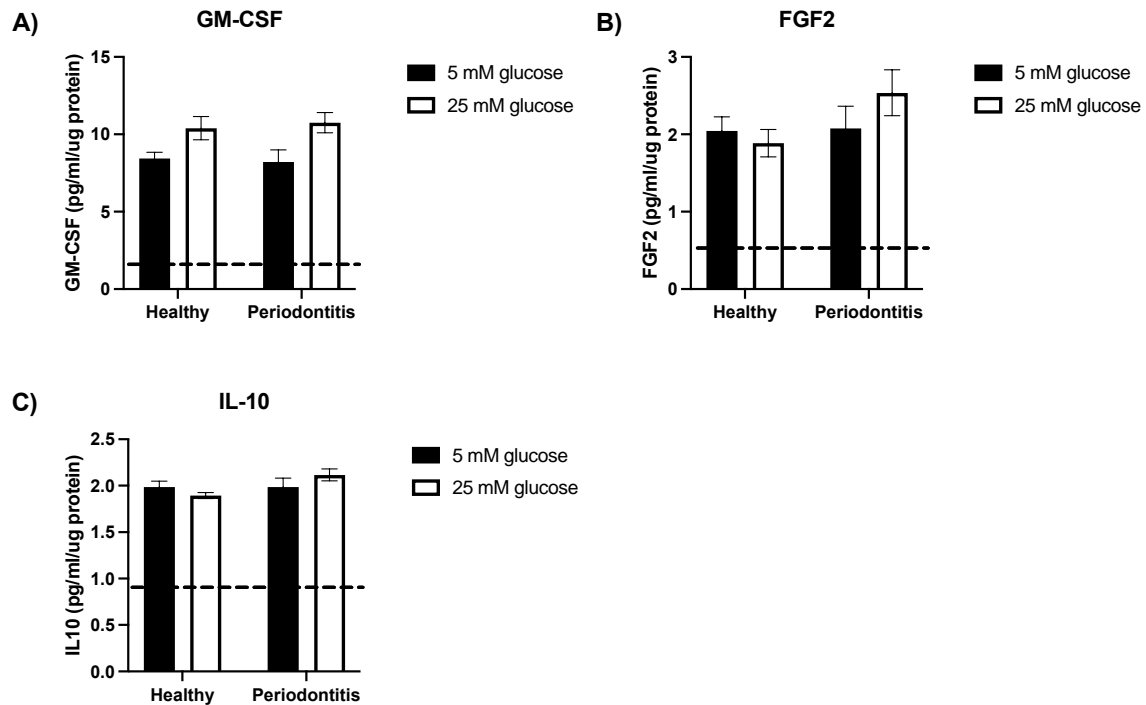


Figure S1. Pro-inflammatory cytokines and matrix metalloproteinases secretion by the gingival coculture model. Pro-inflammatory cytokines and matrix metalloproteinases secretion of **A)** GM-CSF, **B)** FGF2, and **C)** IL-10 by the coculture model following 24 h stimulation with subgingival microbiomes from healthy participants (healthy) and patients with periodontitis (periodontitis) in 5 mM and 25 mM glucose. The dash line represents the baseline secretion by the untreated coculture model in both 5 mM and 25 mM glucose. Results are the mean \pm SEM. One independent replicate and in two technical replicates for each condition. Two-Way ANOVA with Tukey *post hoc* test.

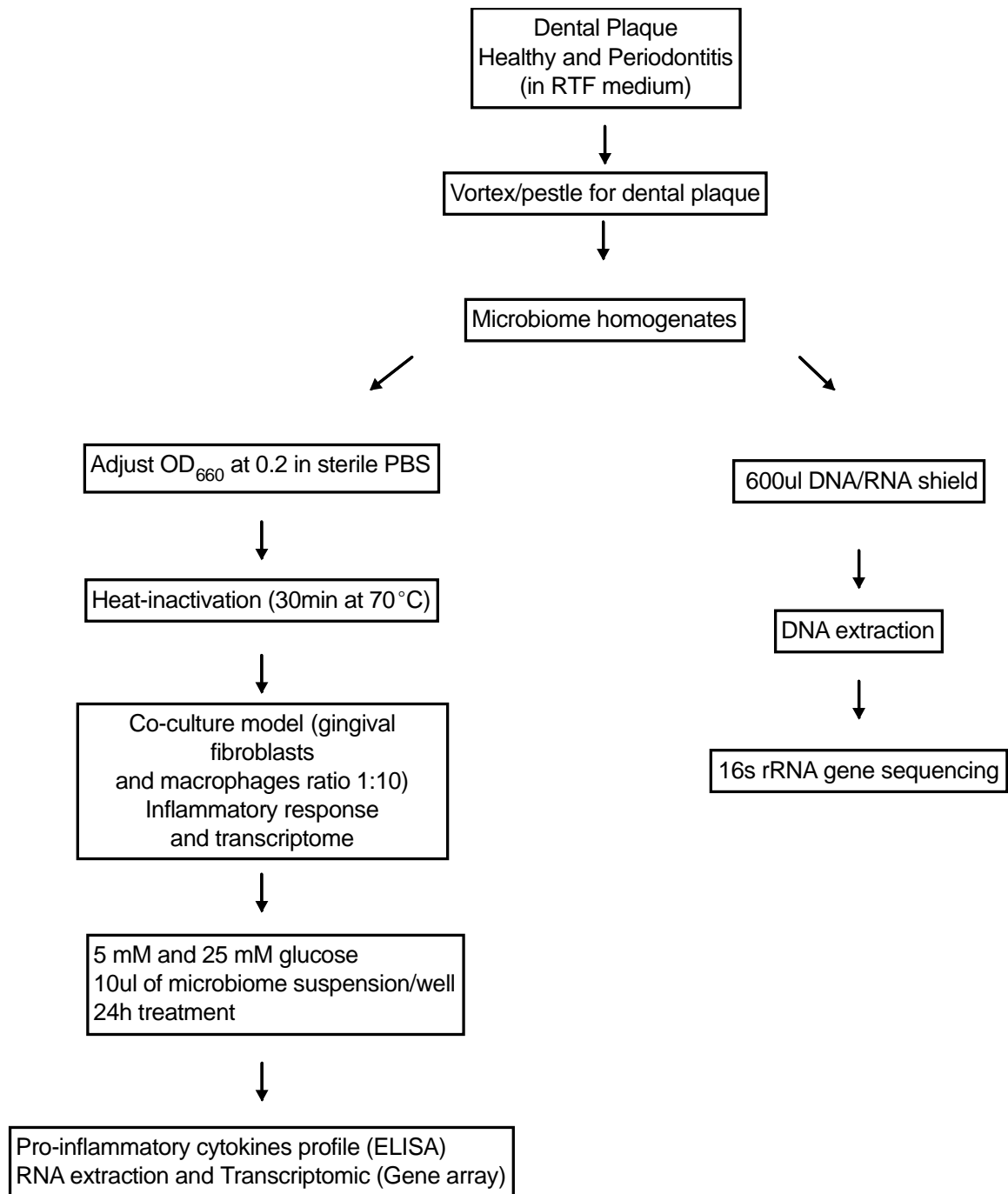


Figure S2. Experimental design.