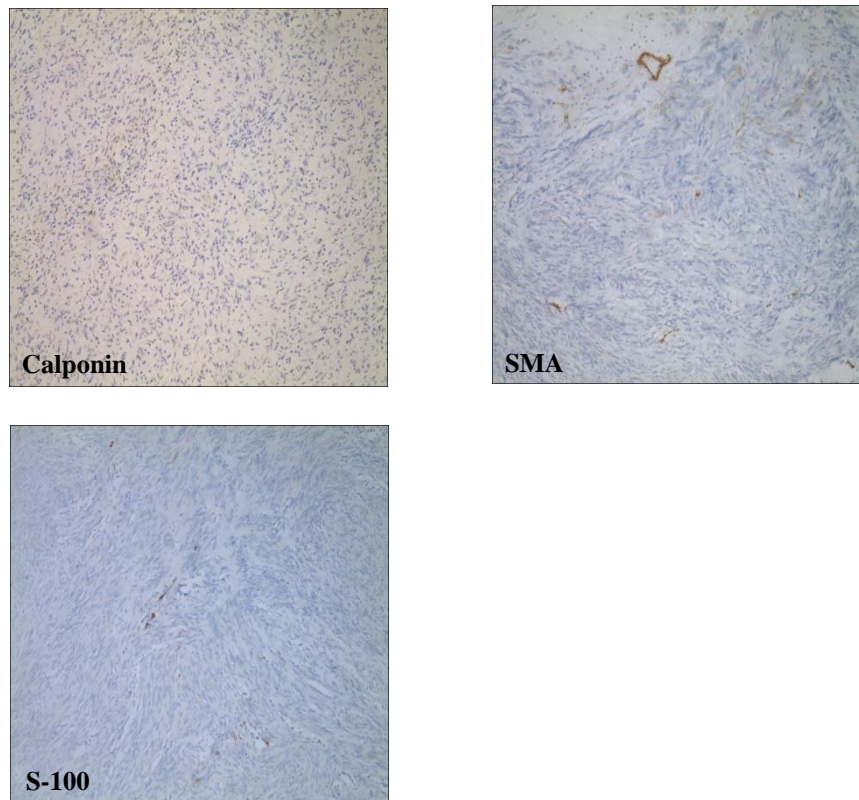
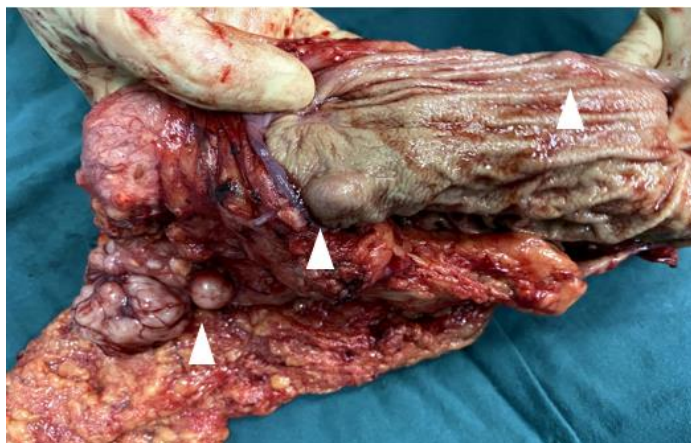


**Figure S1: Negative immunohistochemistry results of the proband's largest lesion.**



**Figure S2: Gross specimen of the total gastrectomy.**



**Figure S3: Dose-finding experiments of HEK 293T cell line.** For cell viability assays, 3000 cells were plated in 96-well plates and cultured overnight. Compounds (imatinib, ripretinib, avapritinib) were then added in serial dilutions. Cellular ATP levels

29 were determined after 48h by the Cell Titer-Glo® Luminescent Cell Viability Assay  
30 (cat# G7570, Promega, Madison, WI, USA). The absorbance of the plates was  
31 measured on a THERMO max microplate reader.

