

Figure S1. Temporal change in surface plasmon resonance for 10 nm AgNPs (1 mg L^{-1}) in FSW. Legend shows time in minutes after addition of AgNP to FSW.

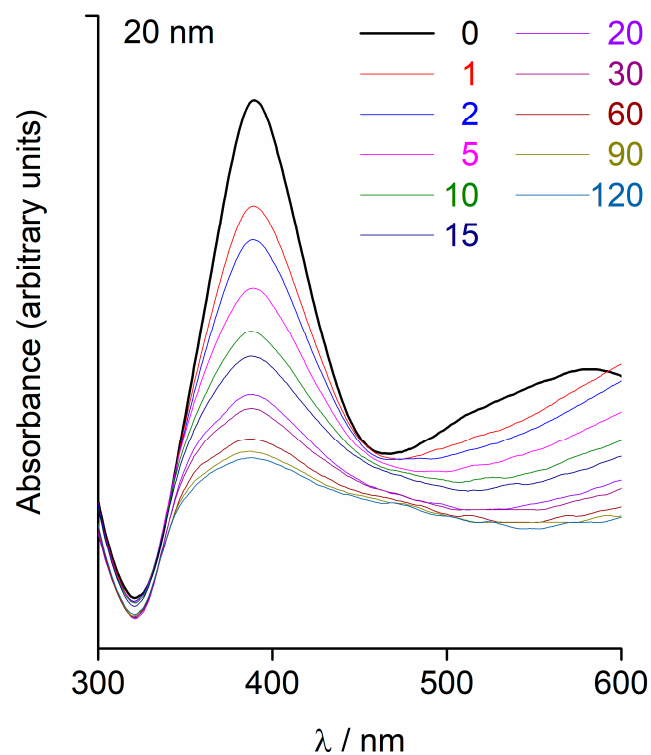


Figure S2. Temporal change in surface plasmon resonance for 20 nm AgNPs (1 mg L^{-1}) in FSW. Legend shows time in minutes after addition of AgNP to FSW.

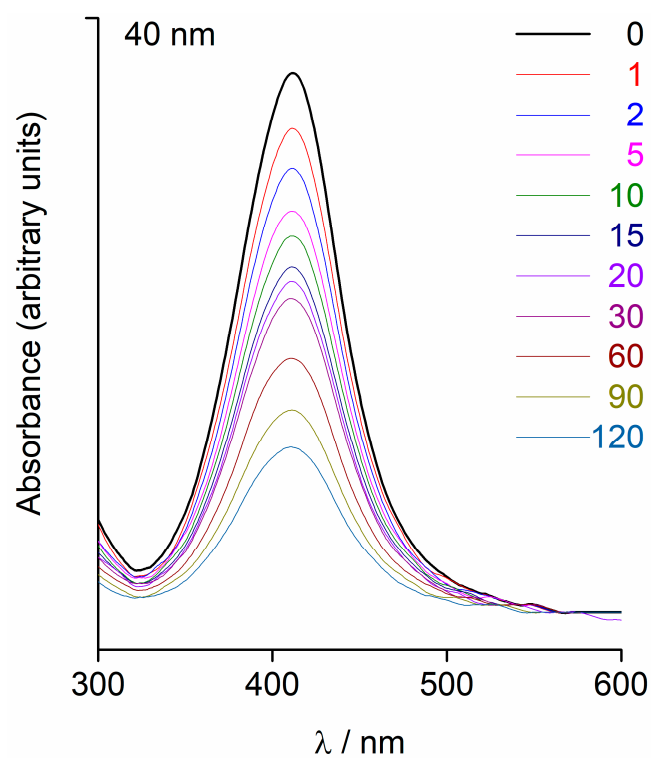


Figure S3. Temporal change in surface plasmon resonance for 40 nm AgNPs (1 mg L^{-1}) in FSW. Legend shows time in minutes after addition of AgNP to FSW.

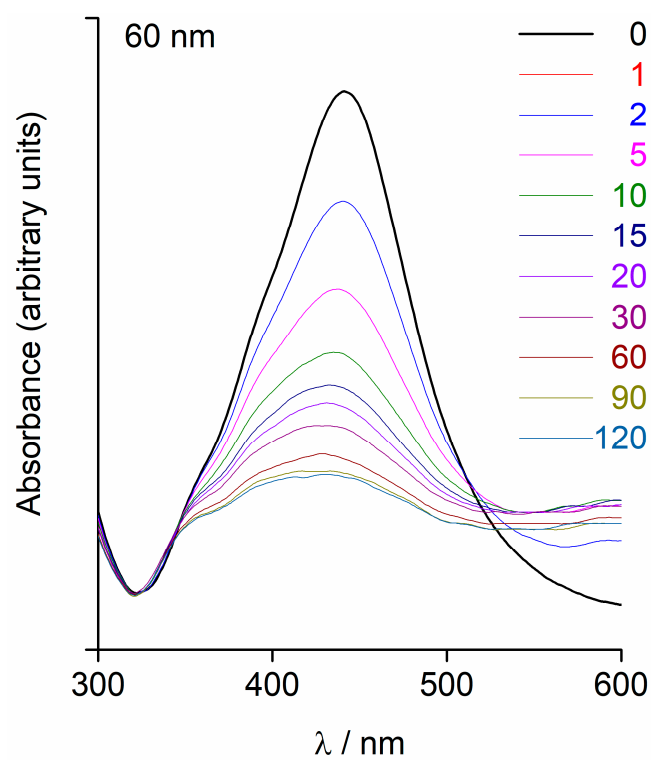


Figure S4. Temporal change in surface plasmon resonance for 60 nm AgNPs (1 mg L^{-1}) in FSW. Legend shows time in minutes after addition of AgNP to FSW.

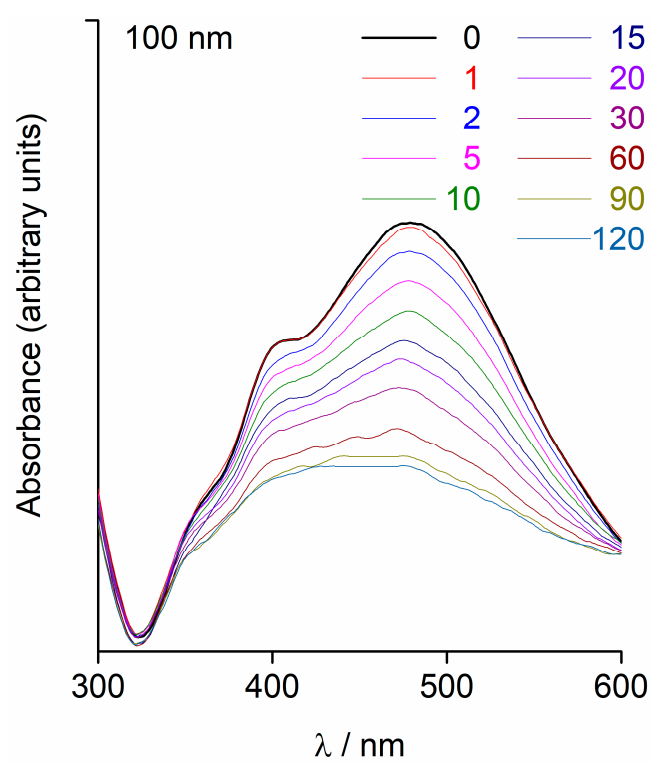


Figure S5. Temporal change in surface plasmon resonance for 100 nm AgNPs (1 mg L⁻¹) in FSW. Legend shows time in minutes after addition of AgNP to FSW.

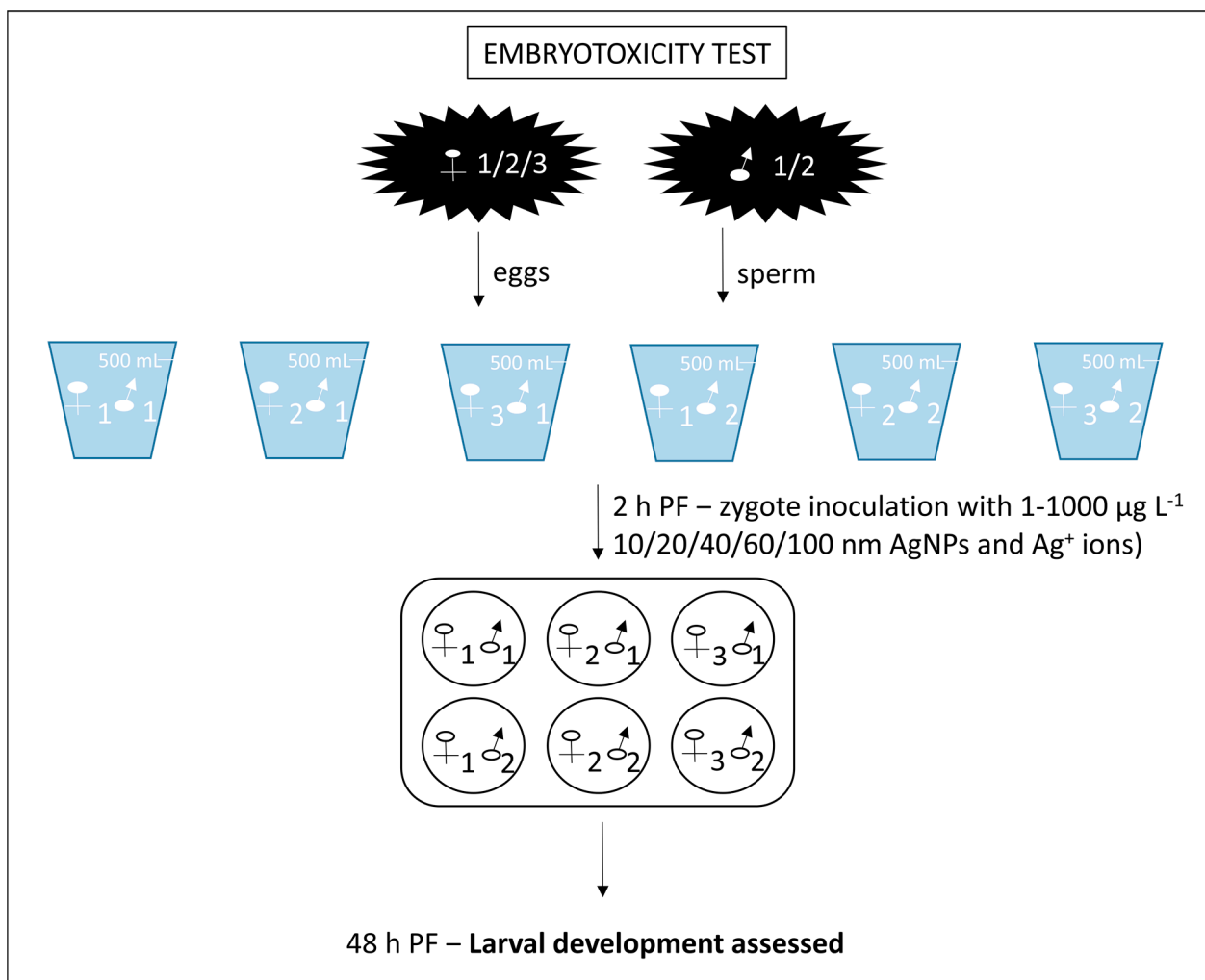


Figure S6. Schematic of the embryotoxicity assay workflow.

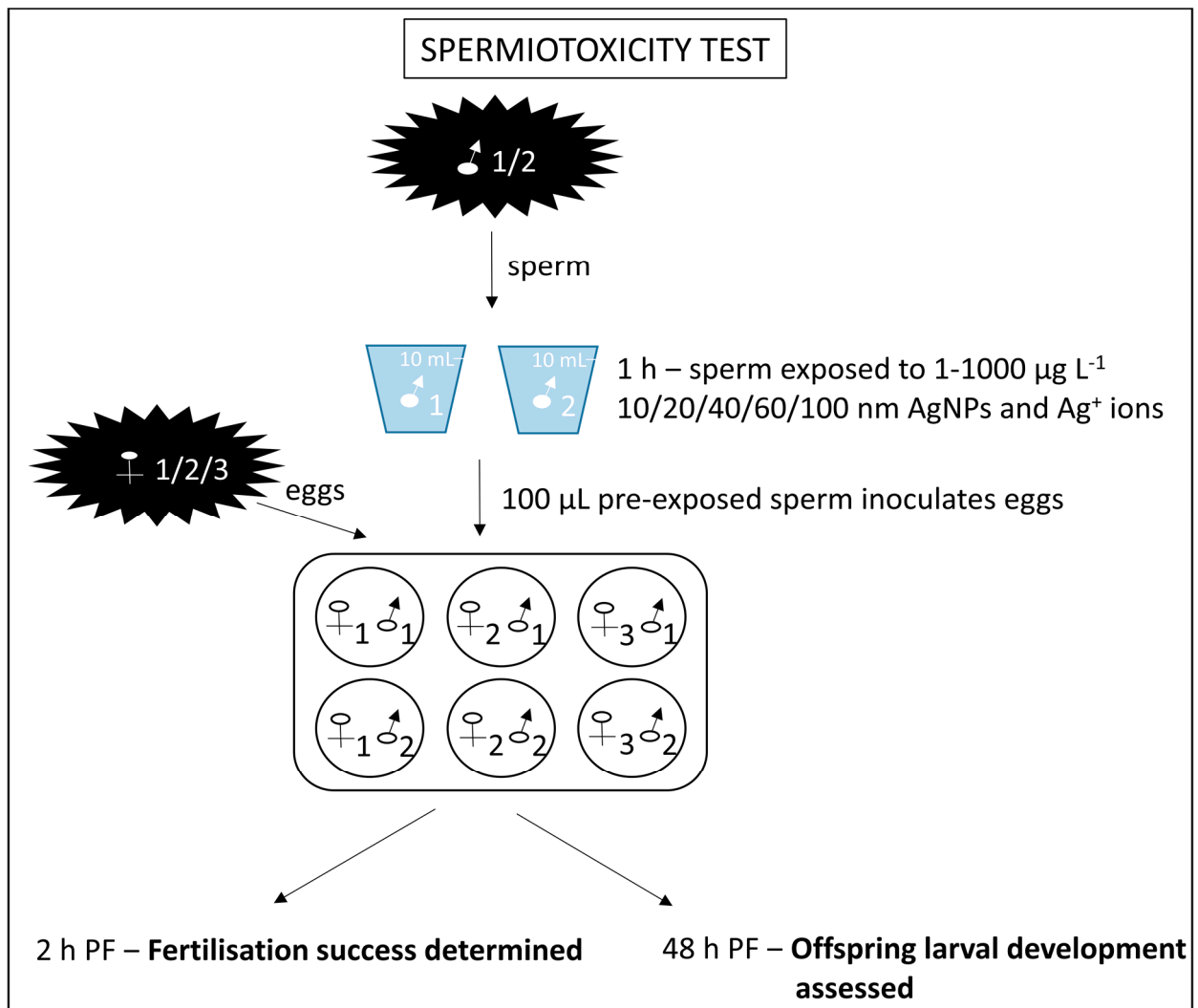


Figure S7. Schematic of the spermiotoxicity assay workflow.