

Supplementary Figure

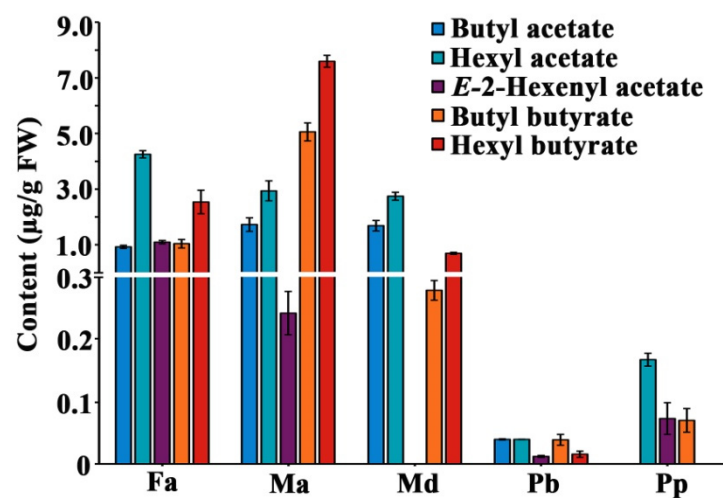


Figure. S1 The content of main volatile esters in five fruits

Note: Fa, strawberry; Ma, banana; Md, apple; Pb, pear; Pp, peach

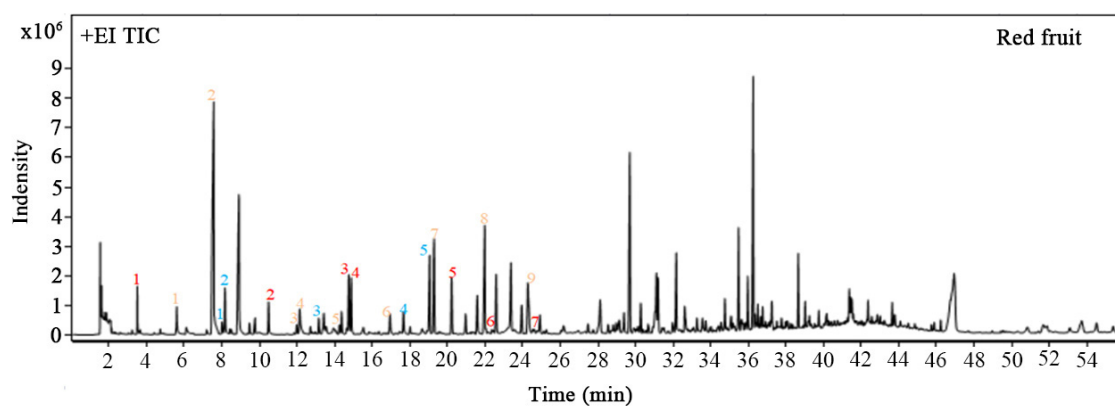


Figure. S2 Ion chromatogram of strawberry extract

Note: Red numbers represent esters, blue numbers represent alcohols and yellow numbers represent aldehydes.