

Supplementary Materials

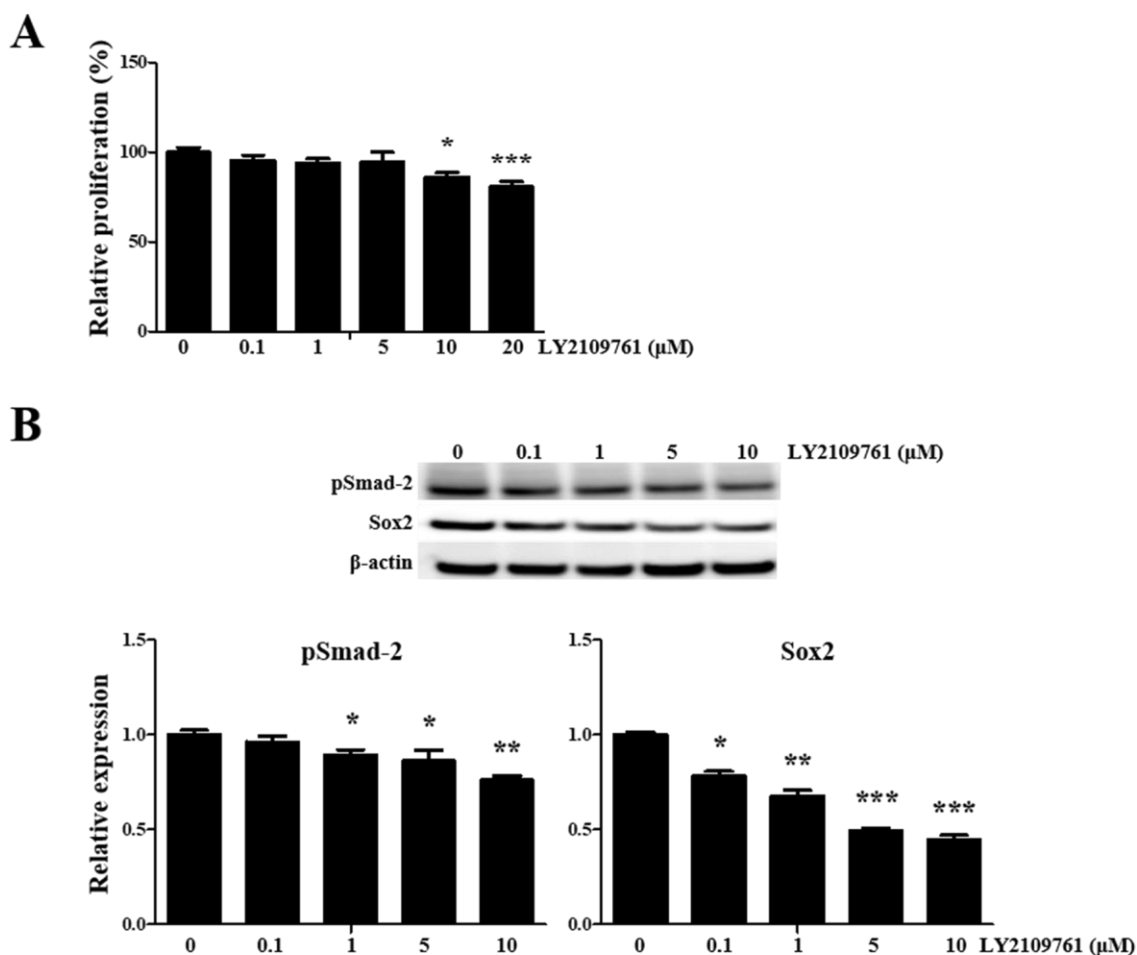


Figure S1. The selective TGF- β R1/2 inhibitor LY2109761 inhibits cell proliferation by pSmad-2 suppression in human endometrial epithelial cells. (A) LY2109761 (0.1 to 20 μ M) displays cellular toxicity dose-dependently. (B) LY2109761 (0.1 to 10 μ M) represses pSmad-2 and Sox2 protein levels, as detected using western blot analysis. β -actin was used as the internal loading control for data normalization. All data are expressed as relative values against their respective control group. Data represent the mean \pm standard deviation of three independent experiments. * $p < 0.05$, ** $p < 0.01$, and *** $p < 0.001$.