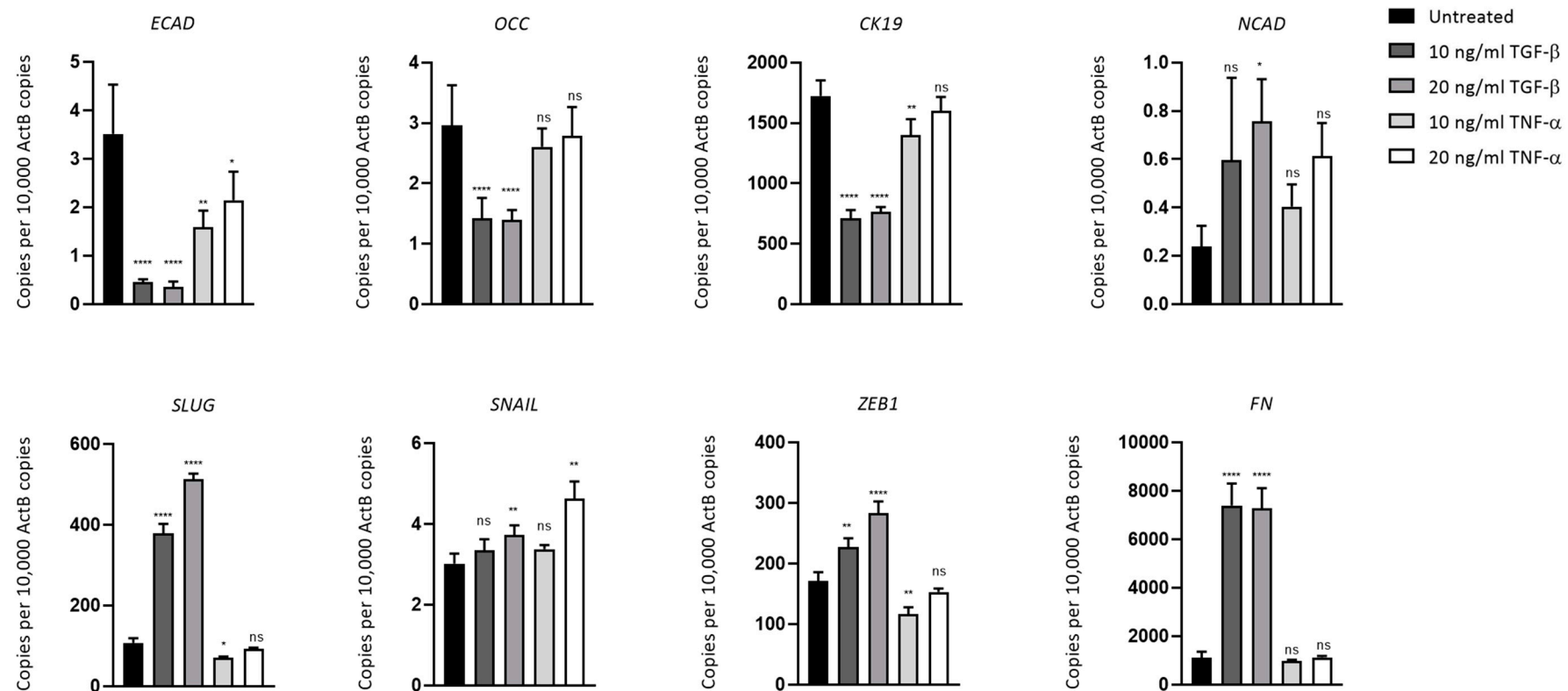


**Table S1.** List of primers for RT-qPCR

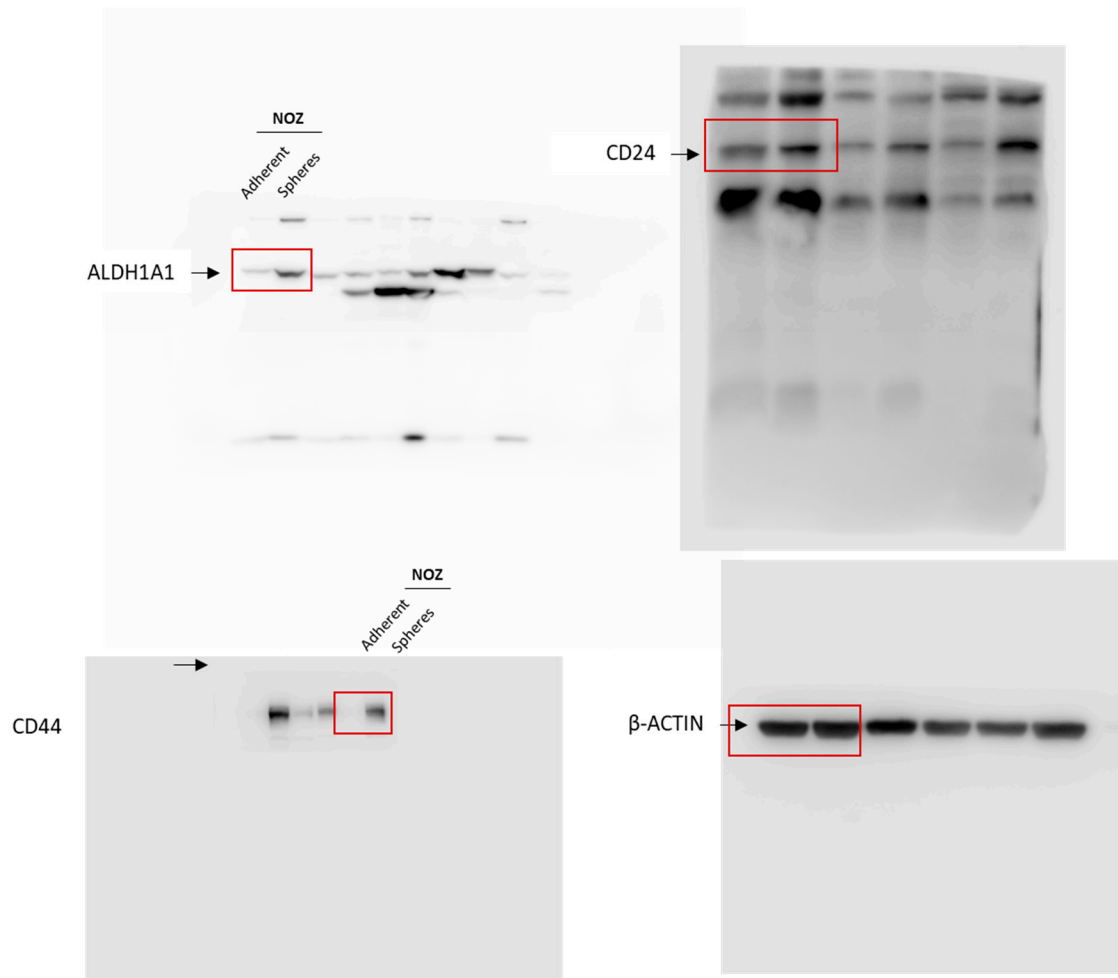
Gene Name	Forward Sequence (5'-3')	Reverse Sequence (5'-3')
ABCG2	GTTCTCAGCAGCTCTTCGGC TT	TCCTCCAGACACACCACGG ATA
CD73	AGTCCACTGGAGAGTTCCTG CA	TGAGAGGGTCATAACTGGG CAC
VISTA	AGATGCACCATCCAACCTGTGAGGCAGAGGATTCCTACGAT TGG	GC
HVEM	TTCTCTCAGGGAGCCTCGTC AT	CTCACCTTCTGCCTCCTGTCT T
PD1	GGTGACAGAGAGAAGGGCA G	GTCCTCCTTCAGGGGCTGG
TIGIT	TGGTGGTCATCTGCACAGCA GT	TTTCTCCTGAGGTCACCTTCC AC
TIM3	CTACTGCTGCCGATCCAAA	GTCCCCTGGTGGTAAGCATC

**Table S2.** List of antibodies used for western blot.

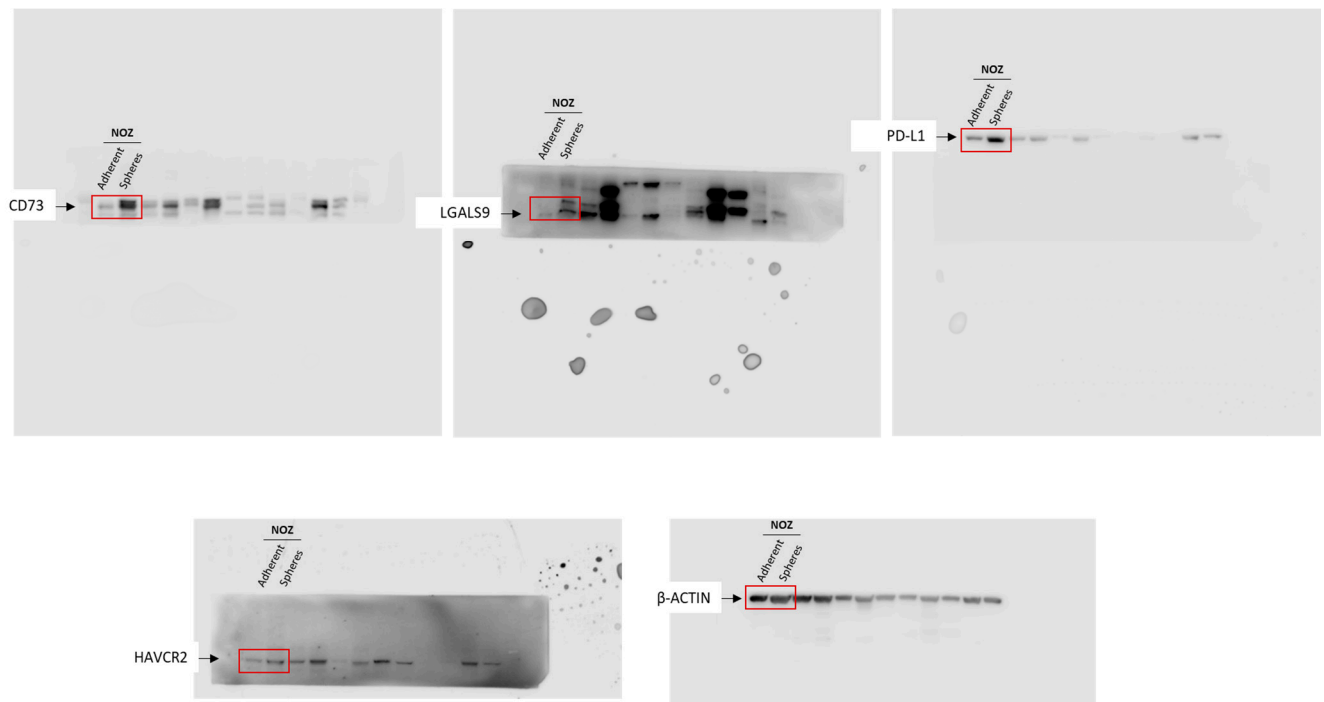
Antibodies	Cat. No.	Manufacturer	Antibody Category	Dilution
CD44	ab157107	Abcam	Primary	1:10000
$\beta$ -actin	4967s	Cell signaling	Primary	1:4000
CD24	PA5-86955	Thermofisher	Primary	1:500
ALDH1A1	sc-374194	Santa Cruz	Primary	1:500
E-CAD	ab76055	Abcam	Primary	1:1000
N-CAD	sc-53488	Santa Cruz	Primary	1:500
OCCLUDIN	sc-133255	Santa Cruz	Primary	1:200
FIBRONECTIN	sc-8422	Santa Cruz	Primary	1:200
ZEB1	sc-25388	Santa Cruz	Primary	1:250
VIMENTIN	ab92547	Abcam	Primary	1:2000
SLUG	sc-166902	Santa Cruz	Primary	1:200
PDL1	ab238697	Abcam	Primary	1:1000
GALECTIN9	ab227046	Abcam	Primary	1:1000
TIM3	ab241332	Abcam	Primary	1:1000
GAPDH	MAB376	Millipore	Primary	1:100,000



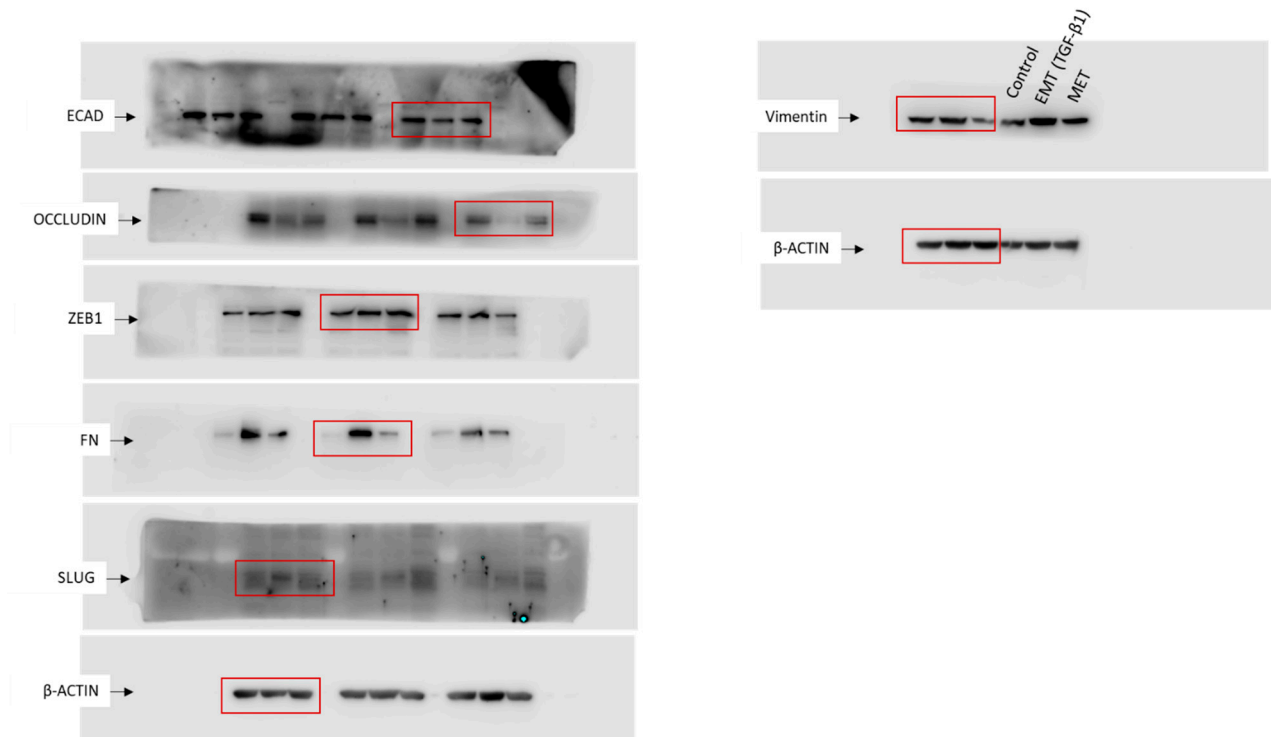
**Figure S1.** Incubation with TGF- $\beta$ 1 or TNF- $\alpha$  for 96 hrs induced EMT to varied extend in NOZ cells. ns not significant, \* $P < 0.05$ , \*\* $P < 0.01$ , \*\*\* $P < 0.001$ .



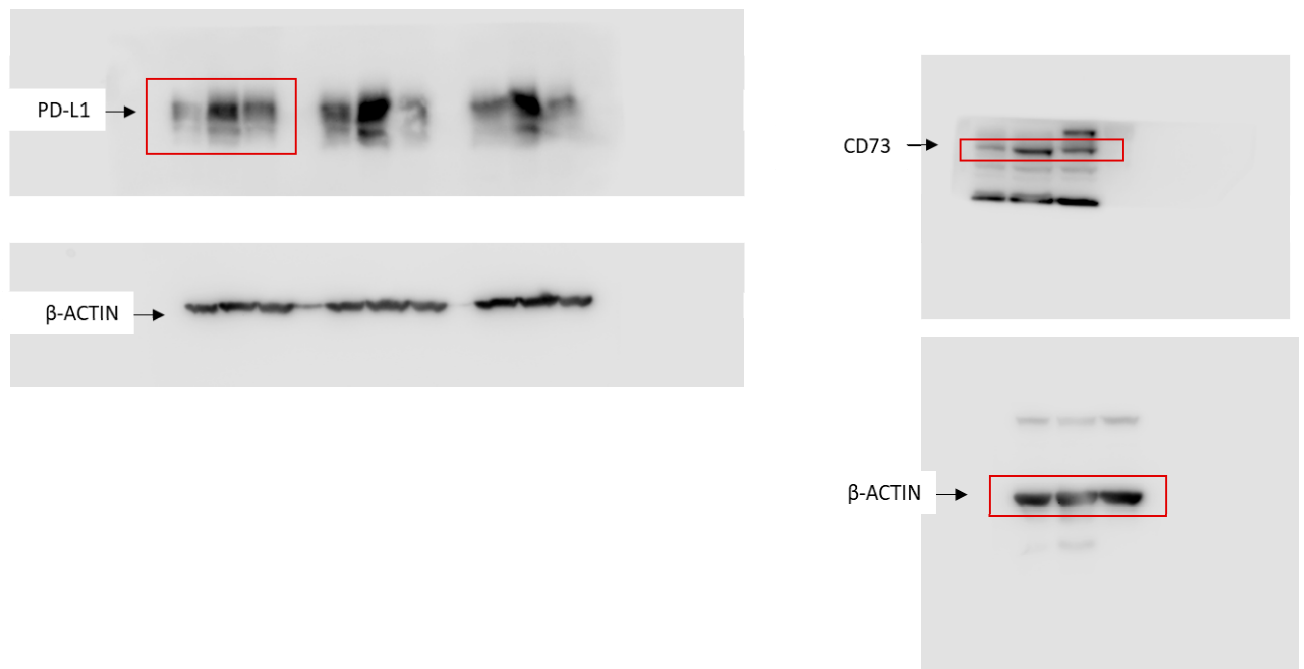
**Figure S2.** Original western blots from figure 1C.



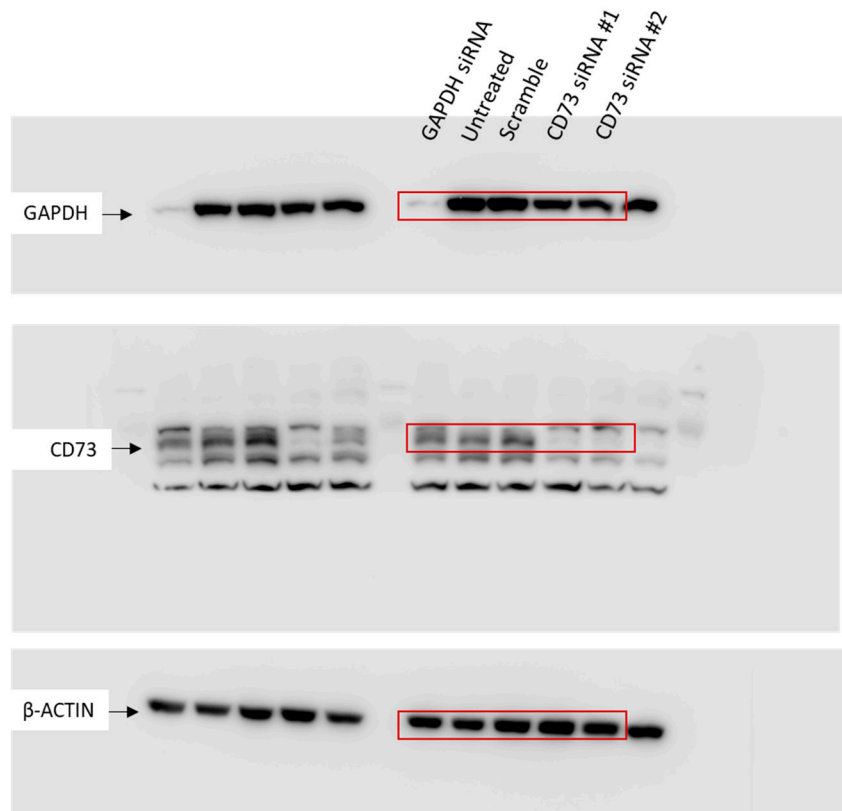
**Figure S3.** Original western blots from figure 2B.



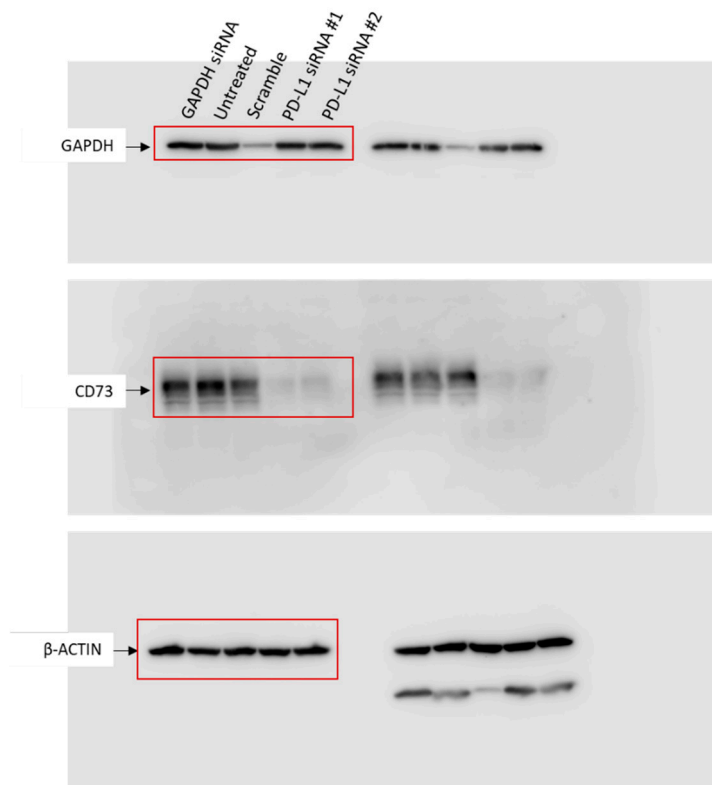
**Figure S4.** Original western blots from figure 4B.



**Figure S5.** Original western blots from figure 5B.



**Figure S6.** Original western blots from figure 6B.



**Figure S7.** Original western blots from figure 6D.