

Figure S1. Low ER β and *GPER1* mRNA expression levels in PTC specimens from open access datasets. Analysis of ER α , ER β , and *GPER1* mRNA expression levels in (A) TCGA datasets and (B) NCBI datasets. ER mRNA expression levels was presented as RNA-seq RSEM ($\log_2(\text{norm count} + 1)$) in TCGA datasets. *** $p < 0.001$ * $p < 0.05$ compared with normal thyroid tissues.

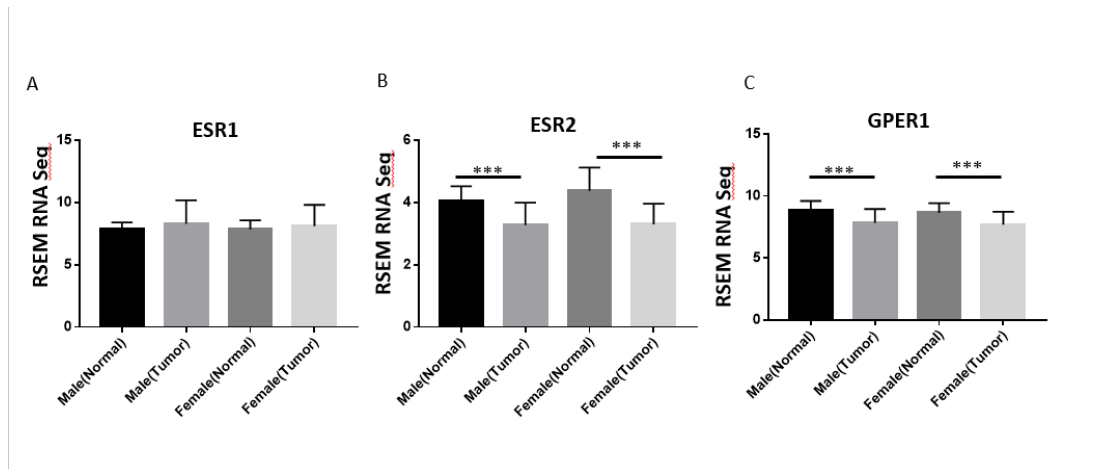


Figure S2. Low mRNA expression levels of ER β and *GPER1* in PTC specimens from both male and female patients. Expression levels of (A) ER α , (B) ER β , and (C) *GPER1*. The mRNA expression levels of ERs was labeled as RNA-seq RSEM ($\log_2(\text{norm count} + 1)$) in TCGA datasets. * $p < 0.00$ compared with normal thyroid tissues. *** $p < 0.001$ compared with normal thyroid tissues.