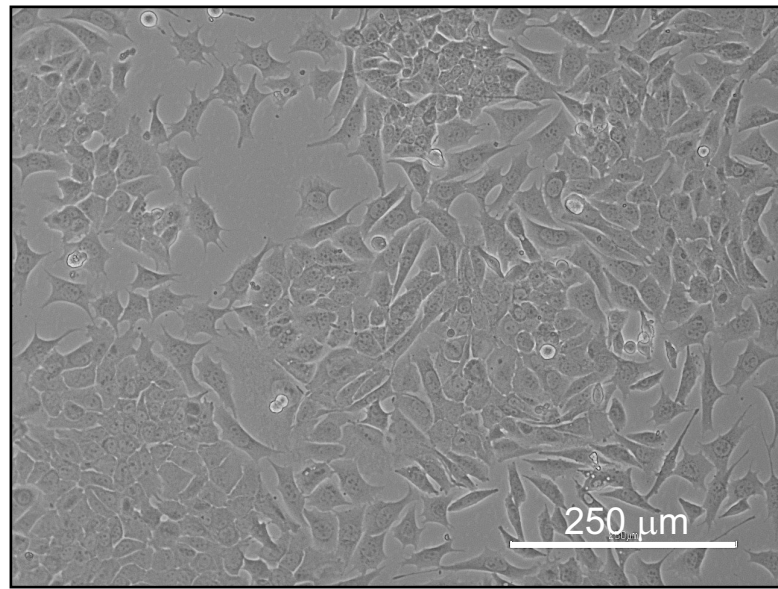
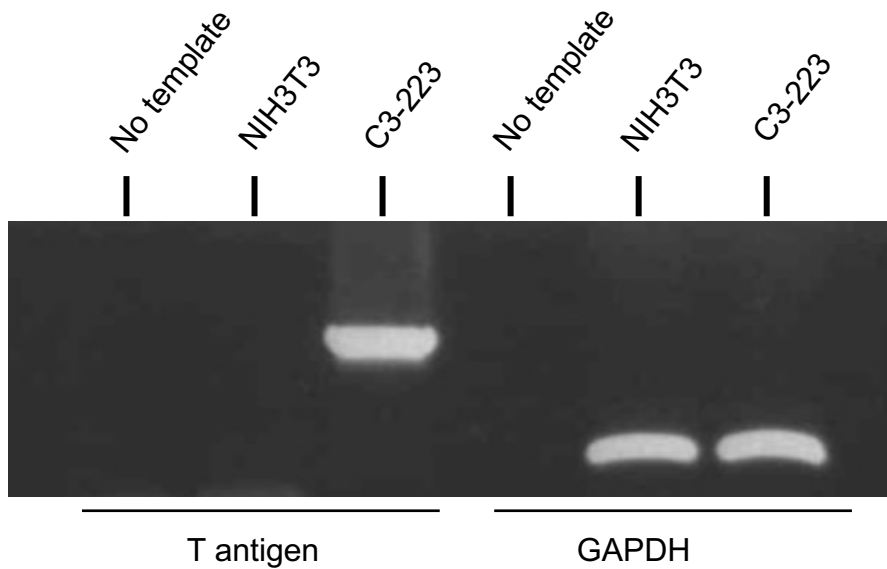


A**B**

Supplementary Figure S2: C3-223 mammary cancer cell line.

(A) Representative photograph of murine C3-223 mammary cancer cell line, scale bar, 250μm. (B) T-antigen expression was analysed by a single PCR on genomic DNA extracted from murine C3-223 mammary cancer cell line and murine fibroblast NIH 3T3 cell line (as a negative control) with the primer set TA1/TA2 :

(GACCTGTGGCTGAGTTTGCTCA) / (GCTTTATTTGTAACCATTATAAG). GAPDH expression was used as a control of the quality of genomic DNA extraction.