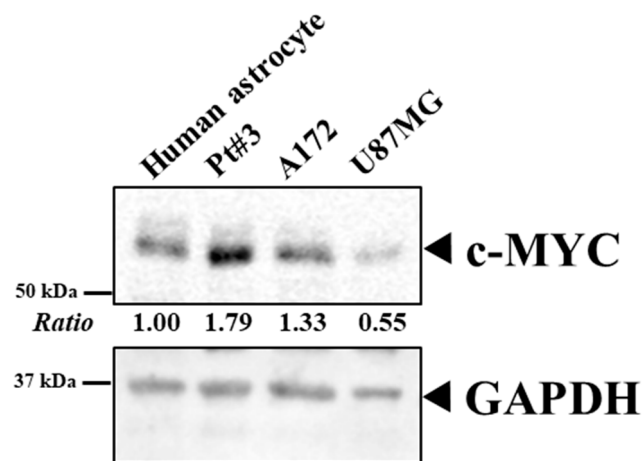


**Table S1.** Information of antibodies used in this study.

Antibodies	Species	dilution ratio; WB <sup>*</sup>	Source	Category No.
MZF1	mouse	WB: 1:1000x	Santa Cruz Biotechnology	sc-293218
GAPDH	mouse	WB: 1:10000x	EMD Millipore	MAB374
c-MYC	rabbit	WB: 1:1000x	Abcam	ab32072
DDK (Flag)	rabbit	WB: 1:1000x	Cell Signaling Technology	#14793
alpha-Tubulin	mouse	WB: 1:10000x	Proteintech Group, Inc.	66,009-1-Ig

<sup>\*</sup>WB: western blot



**Figure S1.** The endogenous c-MYC protein levels in Pt#3 and A172 cells are markedly higher than those in human astrocyte and U87MG cells. Western blot image of the level of c-MYC protein in human primary astrocytes and gliomas (PT#3, A172, and U87MG).