

Sex differences in Neuropathy: the paradigmatic case of metformin

Federica De Angelis ^{1,2}, Valentina Vacca ^{1,2}, Jessica Tofanicchio ^{3,†}, Georgios Strimpakos ¹, Giacomo Giovazzo ², Flaminia Pavone ¹, Roberto Coccurello ^{2,4,*} and Sara Marinelli ^{1,*}

¹ National Research Council (CNR) Institute of Biochemistry and Cell Biology, Monterotondo (RM), Italy

² Sapienza University of Rome, Neurobiology student; Current address: SPA Società Prodotti Antibiotici S.p.A. Milan, Italy

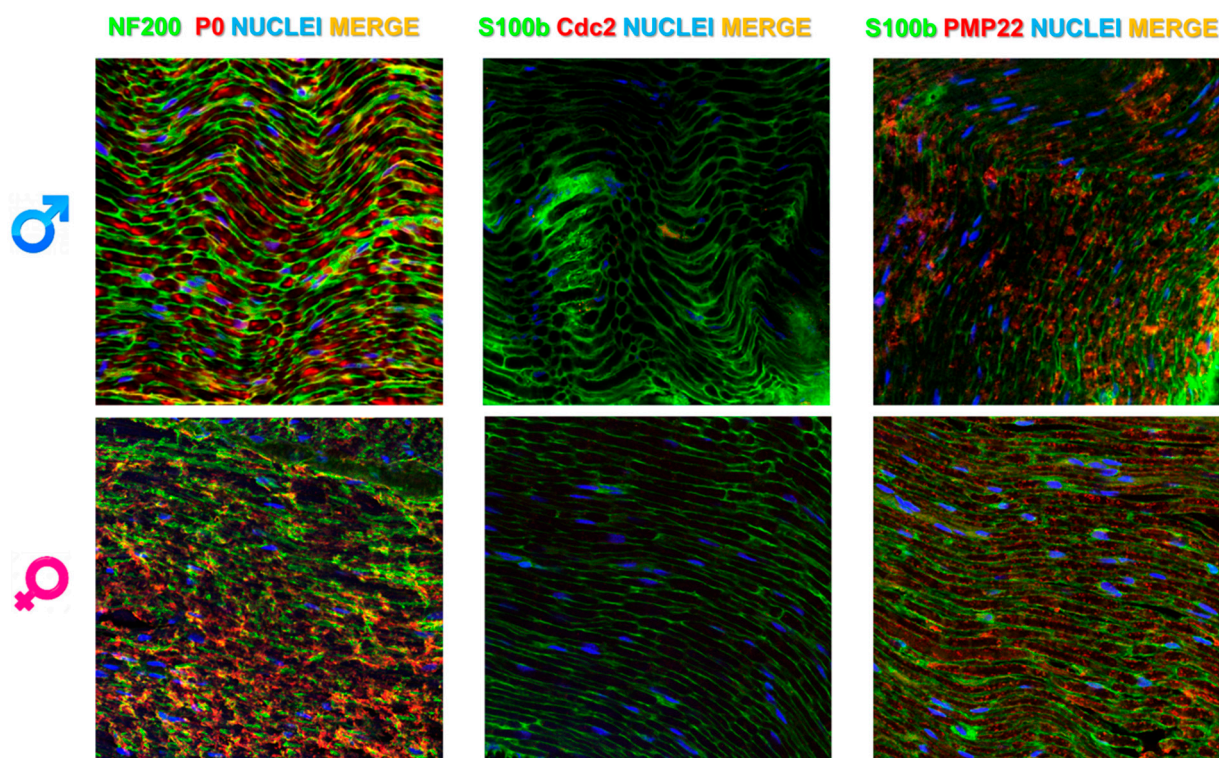
³ National Research Council (CNR) Institute for Complex System (ISC);

⁴ European Center for Brain Research - IRCCS Santa Lucia Foundation, Rome Italy

* Correspondence: RC roberto.coccurello@cnr.it (R.C.); sara.marinelli@cnr.it (S.M.)

Supplementary materials

Supplementary Figure S1



Supplementary Figure S1- Expression of neurofilament (NF200), myelin protein 0 (P0), S100beta, Cyclin-dependent kinase 1 (Cdc2), peripheral myelin protein 22 (PMP22) in sciatic nerve of male and female naïve mice.