

Figure S1. Fluorescence colocalization analysis (Pearson's coefficient) of LCLs derived from a healthy control and AGS patients mutated in *RNASEH2B* and *RNASEH2A* genes stained with VDAC1 antibody (green), TOM20 (red) and DAPI for nuclear staining (blue).

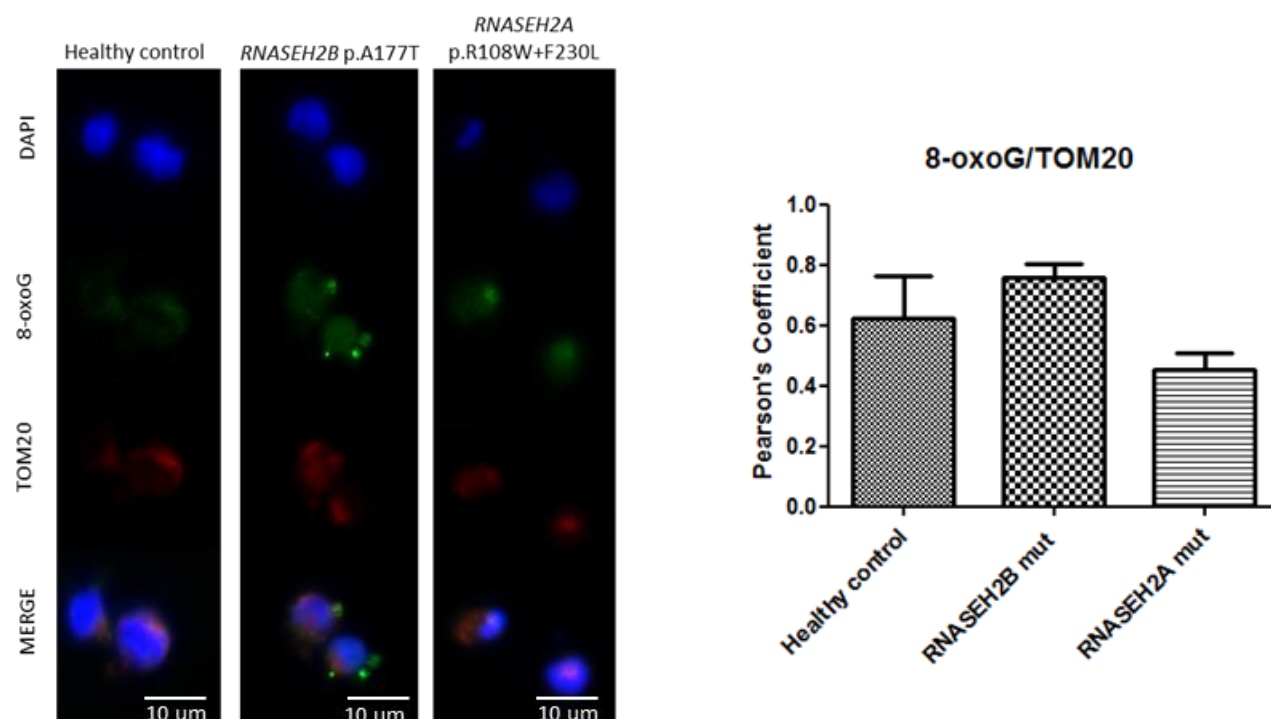


Figure S2. Fluorescence colocalization analysis (Pearson's coefficient) of LCLs derived from a healthy control and AGS patients mutated in *RNASEH2B* and *RNASEH2A* genes stained with 8-oxoG antibody (green), TOM20 (red) and DAPI for nuclear staining (blue).