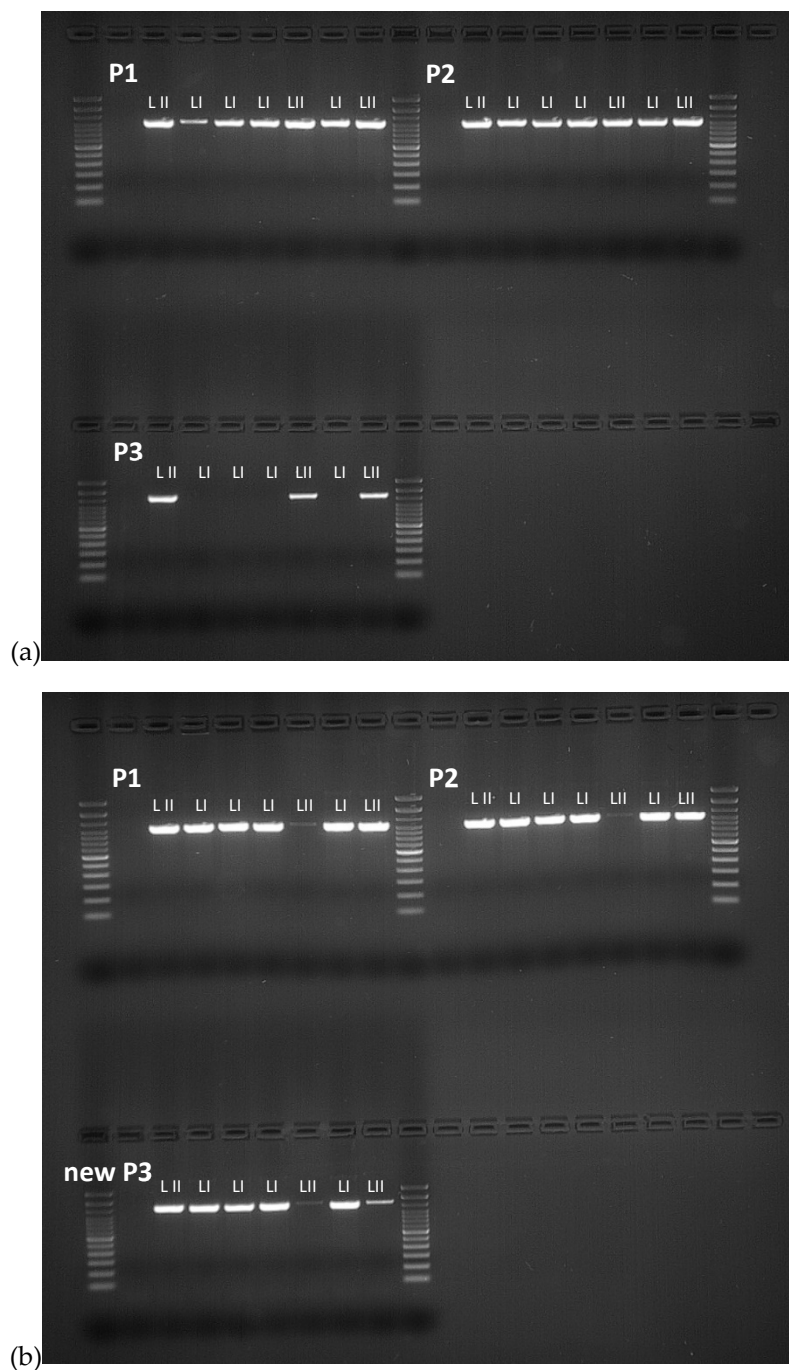


## Electronic Supplementary Materials

### Newly Designed Primers for the Sequencing of *inlA* gene of lineage I and II *Listeria monocytogenes* isolates

Giulia Magagna, Guido Finazzi and Virginia Filipello



**Figure S1.** Gel electrophoresis image of *inlA* amplification of 7 additional *L. monocytogenes* isolates belonging to lineage I and II employing (a) the three primers set designed by Gelbíčová *et al.* [19], and (b) for the third fragment, the newly designed primers.

Forward primer		C	T	A	T	A	C	C	T	T	T	A	G	C	C	A	A	C	C	T	G
1. CP044429.1		-	-	-	-	-	-	-	-	-	-	-	-	-	-	-	-	-	-	-	-
2. CP007194.1: serotype 1/2c		-	-	-	-	-	-	-	-	-	-	-	-	-	-	-	-	-	-	-	-
3. NZ CP007194.1: serotype 1/2c		-	-	-	-	-	-	-	-	-	-	-	-	-	-	-	-	-	-	-	-
4. NZ CP007195.1: serotype 1/2c		-	-	-	-	-	-	-	-	-	-	-	-	-	-	-	-	-	-	-	-
5. CP007195.1: serotype 1/2c		-	-	-	-	-	-	-	-	-	-	-	-	-	-	-	-	-	-	-	-
6. NZ CP006859.1: serotype 1/2a		-	-	-	-	-	-	-	-	-	-	-	-	-	-	-	-	-	-	-	-
7. NZ CP006861.1: serotype 1/2a		-	-	-	-	-	-	-	-	-	-	-	-	-	-	-	-	-	-	-	-
8. NZ CP006858.1: serotype 1/2a		-	-	-	-	-	-	-	-	-	-	-	-	-	-	-	-	-	-	-	-
9. NZ CP007017.1: serotype 1/2a		-	-	-	-	-	-	-	-	-	-	-	-	-	-	-	-	-	-	-	-
10. CP007168.1: serotype 1/2b		-	-	-	-	-	-	-	-	-	-	-	T	T	G	-	-	-	G	-	-
11. NZ CP007169.1: serotype 1/2b		-	-	-	-	-	-	-	-	-	-	-	T	T	G	-	-	-	G	-	-
12. CP007169.1: serotype 1/2b		-	-	-	-	-	-	-	-	-	-	-	T	T	G	-	-	-	G	-	-
13. NZ CP007168.1: serotype 1/2b		-	-	-	-	-	-	-	-	-	-	-	T	T	G	-	-	-	G	-	-
14. CP006874.1: serotype 4b		-	-	-	-	-	-	-	-	-	-	-	T	T	G	-	-	-	G	-	-
15. NZ CP007167.1: serotype 4b		-	-	-	-	-	-	-	-	-	-	-	T	T	G	-	-	-	G	-	-
16. NZ CP007526.1: serotype 4b		-	-	-	-	-	-	-	-	-	-	-	T	T	G	-	-	-	G	-	-
17. NC 019556.1: serotype 4b		-	-	-	-	-	-	-	-	-	-	-	T	T	G	-	-	-	G	-	-

(a)

Reverse primer		G	A	T	G	C	A	G	T	G	A	C	A	C	A	A	A	A	T	G	A	A
1. CP044429.1		-	-	-	-	-	-	-	-	-	-	-	-	-	-	-	-	-	-	-	-	-
2. CP007194.1: serotype 1/2c		-	-	-	-	-	-	-	-	-	-	-	-	-	-	-	-	-	-	-	-	-
3. NZ CP007194.1: serotype 1/2c		-	-	-	-	-	-	-	-	-	-	-	-	-	-	-	-	-	-	-	-	-
4. NZ CP007195.1: serotype 1/2c		-	-	-	-	-	-	-	-	-	-	-	-	-	-	-	-	-	-	-	-	-
5. CP007195.1: serotype 1/2c		-	-	-	-	-	-	-	-	-	-	-	-	-	-	-	-	-	-	-	-	-
6. NZ CP006859.1: serotype 1/2a		-	-	-	-	-	-	-	-	-	-	-	-	-	-	-	-	-	-	-	-	-
7. NZ CP006861.1: serotype 1/2a		-	-	-	-	-	-	-	-	-	-	-	-	-	-	-	-	-	-	-	-	-
8. NZ CP006858.1: serotype 1/2a		-	-	-	-	-	-	-	-	-	-	-	-	-	-	-	-	-	-	-	-	-
9. NZ CP007017.1: serotype 1/2a		-	-	-	-	-	-	-	-	-	-	-	-	-	-	-	-	-	-	-	-	-
10. CP007168.1: serotype 1/2b		-	-	-	C	T	-	-	-	-	-	-	-	-	-	-	-	-	G	-	-	-
11. NZ CP007169.1: serotype 1/2b		-	-	-	C	T	-	-	-	-	-	-	-	-	-	-	-	-	G	-	-	-
12. CP007169.1: serotype 1/2b		-	-	-	C	T	-	-	-	-	-	-	-	-	-	-	-	-	G	-	-	-
13. NZ CP007168.1: serotype 1/2b		-	-	-	C	T	-	-	-	-	-	-	-	-	-	-	-	-	G	-	-	-
14. CP006874.1: serotype 4b		-	-	-	C	T	-	-	-	-	-	-	-	-	-	-	-	-	G	-	-	-
15. NZ CP007167.1: serotype 4b		-	-	-	C	T	-	-	-	-	-	-	-	-	-	-	-	-	G	-	-	-
16. NZ CP007526.1: serotype 4b		-	-	-	C	T	-	-	-	-	-	-	-	-	-	-	-	-	G	-	-	-
17. NC 019556.1: serotype 4b		-	-	-	C	T	-	-	-	-	-	-	-	-	-	-	-	-	G	-	-	-

(b)

**Figure S2.** Forward (a) and reverse (b) sequences of the annealing region of the third set of primers designed by Gelbířová *et al.* [19] of 16 reference isolates representing the four major serotypes of *L. monocytogenes* lineages I and II.